

April 2022

BASINGA



Jim Andrews



Old Basing and Lychpit Parish Magazine
www.basinga.org.uk



SPA DAYS FROM £65

Escape from the ordinary at
Basingstoke's Premier Spa

Your Spa Day includes...

- Indoor pool and jacuzzi
- Sauna and steam rooms
- Heated loungers and foot spas
- Exclusive Spa Day lounge
- Two-course lunch with wine
- ...and so much more!



Learn more at...
beechdown.co.uk

Call us on...
01256 36 22 22

APRIL NOTES AND NEWS

The **cover his month** is yet another excellent photograph from **Jim Andrews**, this time a **Water Rail**. **Nature Notes** can be found on *page 37* and past articles, readers' contributions and photographs can be found on our website www.basinga.org.uk

For the origin of **April's Fool** please see the Linguatastic article on *page 30*.

CONTRIBUTIONS TO THE BASINGA

We welcome both regular and occasional items for the Basinga. The very **last date for copy** to the Editor for the **May edition** is **6pm on Sunday, 10th April**.

Please use the forms on the **Basinga** website www.basinga.org.uk to get your dates, articles and letters to us (*see box on page 15 for further instructions*).

All advertising enquiries – classified, free adverts or inserts (flyers) can also be made via the website. **Don't forget that we only accept articles with about a 300-word maximum and articles are only published at the Editor's discretion.**

PHOTOS AND LOGOS FOR THE BASINGA

If any reader would like to offer a **photograph of the village environment** we would be happy to receive them, either for immediate use or to build up a portfolio of 'village views' that we can use. We now have a web form that you can use to send a photograph for the website archive and possible use in the magazine, go to www.basinga.org.uk and the form can be found on the '**Contributors Submission**' menu. Should you wish to submit multiple photos, or a photo is too 'large', they can be emailed directly to the **Editor**.

This feature should **NOT** be used for Free Ads or article photos, which can be attached to their own forms. We welcome **club** and **society logos**, with the option to use them within articles. Please send graphics to editor@basinga.org.uk

ADVERTISING MANAGER FOR THE BASINGA

Our current **Advertising Manager** is stepping down and we are therefore looking for a replacement to join our group to help with the production and distribution of The Basinga. The voluntary role covers the administration of advertisers' enquiries (not selling) through to ordering and liaison with other members of the production team who place the advertisements into the magazine and website. The candidate should be well-organised and familiar with the use of MS Word and Excel for record keeping. Full handover training will be given. If you are interested and would like further information please contact secretary@basinga.org.uk

BANK HOLIDAY BIN COLLECTIONS

There will be no changes to bin collections on **Good Friday (15th April); Easter Monday (18th April);** or the **bank holidays** for **Her Majesty The Queen's Platinum Jubilee** on **Thursday (2nd June)** and **Friday (3rd June)**. Please put your bins out as normal.

You can find your collection dates at: www.basingstoke.gov.uk/bincollections

NEWS FROM BASING HOUSE

Basing House, once a **Norman Castle**, a **Tudor Palace** and a **Civil War Battlefield**, reopens to the public on **Saturday, 9th April**.

From the opening we will have a family **Easter Trail** around our extensive site – the trail has 10 giant eggs, each of which will have a fun Tudor Easter fact on it and after collecting all ten a will child get lovely tube of Easter jelly beans with a bunny topper!

Over the **Jubilee weekend** the **Sealed Knot** will be holding its biggest event of the year on the Common between Basing House and the A30. We at Basing House are not directly involved. However, I will endeavour to make sure that more details are in the next Basinga. Bangs and crashes are inevitable, but entrance and car parking are to be on the Common which should minimise the effect on the village.

Later in the year we will have a **Tudor Weekend (9th and 10th July)**, a **Summer Market (28th and 29th August)**, and a **Civil War weekend in September**. Our **Ghost Tours** take place in the run up to **Halloween** and the **Christmas Fayre** will be over the **last weekend in November**.

We've also plans to regularly open the **Bothy tea room**.

The **gardening volunteers** have a major role in maintaining our 14-acre site. From the **re-opening** this year, they will be operating a **bookstall** in the **Visitor Centre**. This will offer books (and DVDs) for purchase, and monies raised will go towards supporting the gardening and operational activities of Basing House, and other initiatives across Hampshire Cultural Trust. Donations, or returned items for further sale, would be most welcome.

Basing House will be open **Wednesday to Sunday until late October, 11am to 4pm**. Details on admission and tickets are at www.hampshireculture.org.uk/basing-house

Andrew Howard tel: **01256 327014**

THE IVY CLUB

At a recent bring and buy sale we had a number of jigsaw puzzles left over and, after making a few enquiries, I was surprised how many people during lockdown turned to being puzzlers, we thought it would be good to start a jigsaw puzzle exchange programme going, and if a success open it up to the village.

It would work on the **second and fourth Wednesday of the month; 6th and 20th for April** during club time, which is **1.30 to 4pm**, you can bring a jigsaw along and exchange it for one of ours paying just £1. Think about joining us on a Wednesday? The only criteria being 'bring a mug' for your cuppa. We are also looking to have another coach outing deciding whether it will be Bath or Wells, so as they say watch this space.

Sue Wilson (Chairman), tel. **01256 328196**

THE CHILDRENS' SOCIETY COLLECTION BOXES

The annual collection of boxes will be in April, later than usual following the pandemic. Your generous donations of cash or cheque are greatly appreciated and your kindness and support gives hope to so many children across the country. I shall be contacting you shortly to collect and count your donation but if you have any queries, please call me.

Rosemary Kershaw, tel. **01256 355500**

DO YOU HAVE A WILL IN PLACE?



CLARKE
& SON
Solicitors

A Will is quite possibly one of the most important documents you will ever sign.

Call now to book a free Will healthcheck or to start the process of making your Will.

Clarke & Son Solicitors LLP

Manor House 8 Winchester Road Basingstoke Hampshire RG21 8UG

T: 01256 320555

www.clarkeandson.co.uk

M MARTIN
MATTHEWSON

Call Us:
01256 364753

ALL MAKES SERVICING & REPAIRS
THE VOLVO & NISSAN SPECIALISTS



MOT TEST
CENTRE



Visit: www.garagebasingstoke.co.uk

FREE Local Collection & Delivery T&C's Apply



Unit 1 Pensdell Farm, Farleigh Road, Cliddesden, Basingstoke, Hants, RG25 5HA

www.basingtutors.com

Basing Tutors

- One-to-One Tuition
- Friendly, personal approach
- Professional tutors

Full diagnostic assessment
with no further obligation

Initial consultation
free of charge

Tel: 01256 470948

Email: admin@basingtutors.com

Local
Tutors
For Local
People



EXCLUSIVE OFFERS

for all magazine readers

Visit Basingstoke's most
recommended bathroom &
kitchen supplier and installer...



Checkatrade.com

A1 Bathrooms & Kitchens

- Fully employed fitters
- 24/7 Emergency callout
- Project managed installation
- Comprehensive insurance & labour guarantee



Ask to speak to any of
our happy customers!

Your Dream, Our Creation | www.a1bathrooms.co.uk

SHOWROOM: Unit 3, Cartel Business Centre, Stroudley Road, Basingstoke RG24 8FW T: 01256 810460

OLD BASING BOILER SERVICES



Boiler Installations

Servicing and Repairs

Unvented/Vented Cylinders

Power Flushing
of Heating Systems

Free Estimates

No Call Out Charge

Landlord Certificates

Fully Insured

01256819521 **Bill Martin** 07990514472

www.oldbasingboilerservices.com

Keeping you Gas Safe



**CONTACT BASINGSTOKE
01256 325575 ANYTIME**

**ARE YOU A WORKING WIFE?
AND TIRED OF COPING WITH THE HOUSEWORK?**

WE PROVIDE

REGULAR/HOUSE MOVE/END OF TENANCY CLEANS
IRONING, OVENS AND CARPET CLEANING
OVER 25 YEARS IN BASINGSTOKE



RING US TODAY FOR A FREE BROCHURE
01256 325575



CHEQUERS

Independent Estate Agents



**Thinking of Selling in Old Basing/
Lychpit in 2020 or on the market
without results*?**

Choose an agent one step ahead of the rest...

**Call 01256 810018
and we'll get you moving**

successfully selling property for over 28 years....

www.chequeresestateagents.co.uk

T 01256 810018 E sales@chequeresestateagents.co.uk

*If you have instructed another agent on a sole agency and/or sole selling rights basis, the terms of those instructions must be considered to avoid a possible liability to pay two commissions.

PARISH COUNCIL NEWS

PARISH COUNCIL NEWS ANNUAL PARISH MEETING – MONDAY, 16TH MAY

After holding this meeting over ZOOM last year, we are pleased to be able to invite residents to a face-to-face meeting which will be held in the **hall** at the **Royal British Legion**, Old Basing.

The meeting will start at **7.30pm** and our **speaker** for the evening will be **Simon Cooper, Founder and Managing Director** of **Fishingbreaks.co.uk** who is based in Stockbridge. Simon has written a book on *The Life of a Chalk Stream* and this will be the subject of his presentation.

With the possible threat of development and effect on the River Loddon (one of the few north-flowing chalk streams in the country) Simon's talk should provide some interesting facts about what goes on in our own local chalk stream.

MEET YOUR COUNCILLORS

This is an opportunity for you to raise any local issues you may be concerned about with your Councillors. The next drop-in session will be held on **Thursday, 28th April**, between **10am and noon** in the **Pavilion Tea Room** at the **recreation ground** in Old Basing so if you are out for your daily walk why not call in for a tea or coffee and a chat.

We are still looking for another Councillor to represent Old Basing, so if you think you may be interested why not call in to find out more about this valuable role.

CIL FUNDING

With the development on the land adjacent to the Hampshire Clinic progressing, the Parish Council will receive a substantial amount of CIL (Community Infrastructure Levy) funding to allocate towards improving local infrastructure and amenities.

We would welcome any ideas as to how these funds can be best used to benefit as many residents as possible. Please email your ideas to the Clerk or drop a note through the office letterbox – all suggestions will be carefully considered.

COMMUNITY NEWSLETTER

We are always looking for new and interesting articles to include in the **Community Newsletter** and if you are a local group or individual and would like to be included or wish to publicise an event, please email the Clerk. The next Newsletter will be distributed at the beginning of June (copy date 9th May).

PARISH COUNCIL MEETINGS

The next two meeting dates are **Tuesday, 5th April** and **3rd May, 7.30 pm**

Clerk: **Mrs Sandra Tuck**

Deputy Clerk: **Mrs Kate Hope**

Address: **The Pavilion, Recreation Ground, The Street, Old Basing, RG24 7DA**

Telephone: **01256 462847**

Office Hours: **Monday to Thursday, 10am to noon**

Mobile: **07507 514498 (emergencies only)**

Email: **clerk@oldbasing.gov.uk**

Website: **www.oldbasing.gov.uk**



HORIZON SOUND & VISION

Family Run Business Est 1988

- **Aerial & Dish Installations**
Freeview, Freesat, Sky & European
- **Freeview, Sky or Freesat on additional TVs**
Magic Eye control & HD. Phone & Ethernet points.
- **TV Wall Installation**
Free site survey. System planning. Hidden cabling
- **Tuning & set up of your equipment**
*Cable tidying
Weak/low signal improvement*
- **WiFi Signal Improvement & Network Cabling**
- **CCTV Installations**
- **Audio & Speaker Systems**
Home, Outdoor & Workplace



Checkatrade.com
Where reputation matters

01256 841860

Visit us at Essex Road Basingstoke

www.horizonsoundandvision.co.uk

info@horizonsoundandvision.co.uk



**MIKE'S
GARDEN
SERVICES**

- General garden maintenance
- Landscaping and planting
- Garden clearances • Tree / hedge work
- Fence & shed work / treatments
 - Lawn mowing • Turf laying
- No job too small • Fully insured
- Logs, Kindling and De-icer deliveries
- Free estimates • Competitive rates

Tel: 01256 325015

mnm.chapman@talktalk.net

www.gardenerbasingstoke.com

AFFORDABLE CARE & SUPPORT
FOR ALL YOUR GARDEN NEEDS



The Water Softener Specialists



- Manufacturing water softeners for over 30 years
- Latest non-electric block salt water softeners
- New installations & repairs
- Advanced technology water filters for pure drinking water
- No call-out charge
- Based in Hook

**Fitted, fully reconditioned water softeners
from just £395 (includes warranty).**

Tele: 01256 768171

Mobile: 07836 247694

www.amsmayfair.co.uk

T&S

Tile & Stone Revival

Tile, Stone and grout cleaning specialist

**Professional deep cleaning
and sealing of all
natural stones and tiles.
Interior and Exterior.**

Dennis Buckland

T: 07834 787222

dennis@stonerevive.co.uk

INTERIOR

EXTERIOR

Painter's Pride



**EXPERIENCED HOUSEHOLD
PAINTER & DECORATOR**

NO JOB TOO SMALL

TEL: 01256 355356 or 07876 495657

ADVERTISE IN THE BASINGA

All sizes available:

Enquire by email to advertising@basinga.org.uk or visit www.basinga.org.uk on the 'Advertise with us' dropdown menu for Contract, Classified and Flyer Distribution details.

At no additional cost:

All adverts appear on our website.

Adverts can be changed throughout the year.

Contract Adverts can be linked to the advertisers website and to an optional, advertiser supplied, write up on their company and its activities and can include photos.

**Making your
home more
homely, all
year round.**

RIPTON
Windows &
Conservatories



Call 01256 841522

riptonwindows.co.uk



SOLVE April Update

SOLVE has been talking with other parishes and all are very uneasy about the housing calculations. A number of authorities have paused their Local Plan Updates in order to see what comes forth from the Ministers.

At the Economic, Planning and Housing Committee, 3rd March, we had our first sight of the 'updated' (think total re-write) of the Plan Policies and the housing calculation. SOLVE pushed for three things from the Councillors:

1. The 2021 census data will be released in May. You must insist that this data is used by Basingstoke & Deane; this is entirely reasonable. (We would like to see the legal challenge that insisted 10-year-old data was superior in accuracy to one-year-old data.)
2. These Plan Policies must be made more robust. We have eroded any strength from our previous policies, this is a developers charter and they must be re-written to support the new Basingstoke and Deane Council Leader Cllr. Simon Bound's foreword, that is: "policies to ensure that climate change is at the heart of all future change, that communities are beautiful and sustainable, and that our environment is protected and enhanced, supporting the ecological emergency declaration"
3. You are requested to 'consider what we want the policy framework to achieve. Your residents have said overwhelmingly they want to limit growth – significantly. Other authorities test their Plan Policies by having a QC review them. Let's face it, this is only what a keen developer will do – let's level up the playing field, so that we know our policies will function properly.

You are the elected members shaping this borough. We residents would like: use of 2021 Census data; Robust plan policies; a QC review of the policies

Timetable – expected public consultation for the Local Plan is somewhere June to August.

River Loddon Policy

The new much-hoped-for River Loddon Policy, which has a real chance to do something good, has been diluted to cover only flood zone 2 and 3 (immediately adjacent to the river). This means it will be great if you want to build a house on stilts over the river but is otherwise rendered entirely ineffectual – a huge shame. We will be working to create an effective policy.

Looking for experts

Local enthusiasts on flora, fauna, ecology etc. always wanted; nothing beats local knowledge. We are keen to speak to anyone with an interest in these areas so do please get in touch.

Redlands additional planning refused

Relief that an extra 57 dwellings at Redlands were refused outline planning permission. Remarkably the developer claims odour from the sewage works is not a problem despite the significant recent increase in complaints. Do continue to email your councillors and if you smell or see sewage; it is vital that you report it:

Environment Agency Incident hotline (24-hour): 0800 80 70 60

Thames water: 0800 316 9800

Contact: **Kate Tuck**, tel. **07747 000534** or **katetuck21@gmail.com**

SOLVE website: **www.solveloddon.org**



All Seasons
Window & Driveway Cleaning

**Domestic & Commercial
Window Cleaning Services**

Additional services include :

- Driveway Cleaning
- Cladding / Signage Cleaning
- Gutter / Fascia Soffit Cleaning
- Conservatory Roof Cleaning
- Pure Water (NO CHEMICALS)



All Seasons
Window & Driveway Cleaning



Conservatory
Deep Cleans



Safe, Efficient
Ladder-Less Cleans



Refreshing, Driveway
& Pathway Cleans

Please Contact Steve :

01256 353727

info@allseasonswindowcleaning.com



www.allseasonswindowcleaning.com

Brewers
DECORATOR CENTRES

Kieder Teal from the Albany
Shangri-La Wallpaper Collection

**Your choice for
paint and wallpaper**
and the very best in free advice



138 Basingstoke Trade Park
Worting Road, Basingstoke
RG21 8BJ 01256 467373
basingstoke@brewers.co.uk

1 Whitney Road
Daneshill Estate, Basingstoke
RG24 8NS 01256 464745
basingstoke.east@brewers.co.uk

£20 OFF

When you spend
£100 or more ZX520BSB



5019646988929

£10 OFF

When you spend
£50 or more ZX510BSB



5019646988912

Valid until 31st December 2022 at Brewers Basingstoke only.
Terms and Conditions apply, ask in store for details.

Lamberts Plumbing Services

PLUMBING & HEATING CONTRACTORS

BOILER INSTALLATION & SERVICING
BATHROOM INSTALLATION & TILING
GAS SAFETY INSPECTIONS
ALL ASPECTS OF MAINTENANCE REPAIRS
NO JOB TOO BIG OR SMALL

Railside, Station Road, Hook, Hampshire RG27 9HT

Tel: 01256 783597 Mobile: 07501 559668

Email: lamberts_plumbers@yahoo.com www.lambertsinhook.co.uk

CONSIDER IT DONE!

**PAINTER
&
DECORATOR**

Call Graham:
**07494
294246**

Check out our
website:

[consideritdonepainting
decorating.com](http://consideritdonepaintingdecorating.com)

**GC
DS** GUINEA COURT
DENTAL SURGERY

EXCEPTIONAL PRIVATE DENTAL CARE FOR ALL AGES

Achieve and maintain the best possible smile with our highly-skilled dentists and specialists all in one dedicated location.

- Come and visit Guinea Court for:
- General and cosmetic dentistry
 - Hygienist services
 - Teeth whitening
 - Orthodontics for adults and children
 - Invisalign®
 - Dental implants
 - Facial aesthetics
 - Specialist gum treatments

- Anti-snoring devices
- Sedation for nervous patients
- Emergency appointments
- Affordable Membership Plans
- 0% interest finance options, 0% APR Representative.

We are welcoming new patients. Call us on
01256 840141
to book an appointment
or visit our website.

21 - 22 Guinea Court, Chineham, Basingstoke, Hampshire RG24 8XJ

www.guineacourtdental.co.uk | reception@guineacourtdental.co.uk | 01256 840141



WhatsApp Scam

"Hi Mum I've dropped my phone down the toilet but have managed to borrow one."

"Hi dad I've lost my phone, please can you save this as my new number?"

Scammers using WhatsApp are posing as family members in order to manipulate people into transferring money.

Scammers pretend they have a new number, and then go on to say they are having some sort of difficulty, for example, their bank's app isn't working on the new phone or they have some urgent payments they need help with. If victims try to call them they say the microphone is broken or they can't talk right now.

Advice from the Fraud Safeguarding Protect Officer

- Always contact the family member or friend (try their original number as well) to check the request is genuine before sending money
- Confirm with them in person or on the phone to ensure that the account details are correct
- If you are suspicious, ask a question that only your family member could answer
- Scammers will often give excuses as to why you shouldn't transfer it to the family/friends account details you already have for them
- Even if the message wording and spelling sounds like them, always conduct these extra checks to be sure
- If you are unsure on a transaction made, please contact your bank immediately

BASINGSTOKE AND DISTRICT DISABILITY FORUM



Activities are all free and include: walking groups (Thursdays); monthly in-person Cuppa and Chat; monthly Chronic Pain Support Group meetings; weekly mobility improving seated yoga (both online and face to face).

Disability Awareness Day will be held at **Basingstoke's The Malls** shopping centre on **Friday, 1st April**. This event is an opportunity to gain information, support and advice on disability-related subjects from local organisations, businesses and government departments.

Do you have a disability-related question and don't know which way to turn? **BDDF** have extensive signposting information. We can point you in the direction of the service or local organisation who will be able to help. We also offer one-to-one in-person sessions to give us time to listen to and understand your needs so that we can better assist you.

Volunteer opportunities – we have two spaces on our Trustee Board and are looking for a signpost service assistant. If you care about making Basingstoke a more inclusive place for people affected by disability and want to offer support to disabled people - if you have time to offer, consider joining us.

Keep in touch – As well as following **BDDF** on social media, or visiting our website at **www.bddf.org.uk** you can sign up to be a free member to receive our regular newsletter detailing our latest events and services and invitations to members' events.

Looking for independent financial advice you can trust?

We'll help you create, increase and protect your wealth. Our personal service is designed to build a shared understanding of your wealth objectives and to translate these ambitions into reality.

To find out more, please call

01276 34932

S4financial
SUPPORTING YOUR FINANCIAL LIFE



 01276 34932

 www.s4financial.co.uk

- * Family Wealth Preservation
- * Wealth Management
- * Tax Planning
- * Protection Planning
- * Retirement Planning
- * Mortgages

The value of investment can fall as well as rise. You may not get back what you invest. Your home may be repossessed if you do not keep up payments on your mortgage. There is normally a fee for advising on and/or arranging a mortgage, the precise amount will depend on your circumstances but we estimate that it will be £495.

R. LOVELOCK

HEATING & PLUMBING

ALL ASPECTS OF PLUMBING
INCLUDING

- BOILER FITTING • SERVICING & REPAIRS
- GENERAL PLUMBING

TEL: 01256 421138
MOB: 07383 064464
EMAIL: contact@rlovelockheating.co.uk



PJH

Window Cleaning Services

Local, reliable window cleaner

For a free, no obligation quote for

- Window cleaning • Facias
- Gutters • Conservatory Roofs

Please call Pete on

07762 616600

e-mail: pjhcleaning@gmail.com

lsa
LOUISE SANDERS
OSTEOPATHS

Free car park
Emergency appointments
Home visits
Free advice on rehabilitation
Free advice on exercises
Free ergonomics advice

DO YOU SUFFER FROM.....

Back Pain, Sciatica,
Headaches,
Sports Injuries,
Shoulder Problems
Neck Pain, Joint Pain,
Elbow & Wrist Problems,
Muscular Strains

OLD BASING
Old Basing Health Centre,
Manor Lane
Old Basing | Hampshire | RG24 7AE
01256 868 370

CLASSIFIED ADVERTISEMENTS



Piano Lessons

All ages and abilities

Beginners welcome

Qualified and experienced teacher

Philippa Ford 01256 470174



ADVERTISE IN THE BASINGA

For Contract, Classified and Leaflet Distribution

Contact advertising@basinga.org.uk

We ask for submissions to the magazine and website to be made via www.basinga.org.uk using the web forms:

Selection for Articles/Letters and Diary Dates will be found on the “Submissions” drop down and for Free Ads and Concession/Poster Ads on the “Advertise with us” drop down. Paid advertising enquiries can also be made from the same dropdown menu.

Submissions made via the forms now provide a common input for both the magazine and website and are automatically routed to the member of the team responsible for processing them. All submissions must be received by the 10th of the month (6th in December) previous to the magazine issue month.

If you have trouble finding the forms, you can of course contact us and we will advise.

Our Privacy Policy is available to read on the website which includes the GDPR requirements for publishing photographs.

Contacts for general enquiries and assistance:

Paid Advertising - advertising@basinga.org.uk

Magazine and Website - editor@basinga.org.uk

All Advertisements in the magazine and website are inserted in good faith and the Basinga Management Committee accepts no responsibility for any statement, omission or errors made by the advertisers; nor endorses the products or services advertised. The views and opinions expressed in the Basinga are those of the organisations, individuals and authors concerned and not necessarily those of the Basinga Management Committee.

ADVERTISE IN THE BASINGA

All sizes available:

Enquire by email to advertising@basinga.org.uk or visit www.basinga.org.uk on the 'Advertise with us' dropdown menu for Contract, Classified and Flyer Distribution details.

At no additional cost:

All adverts appear on our website.

Adverts can be changed throughout the year.

Contract Adverts can be linked to the advertisers website and to an optional, advertiser supplied, write up on their company and its activities and can include photos.



R.KNIGHT

JCB & PLANT HIRE

All Ground Work Undertaken

Fencing & Tree Work

Tel: 01256 324588

Mobile: 07703 458372

Groundworks | Footings | Driveways | Landscaping



07841 532 878

*For all your Home & Garden needs,
including:*

-  Fencing
-  Decking
-  Shed construction & Bases
-  Landscaping
- New lawns*
- Artificial Grass*

-  Painting & Decorating
-  Handyman Jobs
-  Tiling
-  Flooring



www.primeimprovements.co.uk



FREE ADS – BUY AND SELL

Note: All ads are processed in received date order. Ads not included this month will be entered in next issue, space permitting. If you do not want your ad to appear later, contact the Advertising Manager. Ads also appear on the website with photographs if available.

TOWER CARPET WASHER **FREE** **07551599423**

As new. Complete with starter bottle of shampoo. Free to good home!

SINGLE DIVAN BED **FREE** **012560356884**

Slumberland 'Savoy Serene' 2-drawer divan base and mattress. Very good condition. Always been fitted with mattress protector and used only for occasional guests. Grey velour buttoned headboard. Buyer collects.

ROWING MACHINE **FREE** **01256333782**

Fully working rowing machine which is free providing you collect from Old Basing. Approximately 2 metres long.

CONCESSION ADVERTS

LADIES FIRST FRIDAY COFFEE MORNING

Why not come and enjoy a chat, cup of tea/coffee and a biscuit at the home of Sue (3 Whitehead Close, Lychpit) on **Friday, 1st April** and Mrs June Brant (19 Rosehip Way, Lychpit) on **Friday, 6th May**. Both from **10.30am to noon**. For further information telephone **Sheila Stone** on tel. **01256 350238**.

PLOUGHMAN'S LUNCH

Ploughman's Lunch at the **Parish Room, St Mary's Church**, on **Thursday, 21st April** at **12.25pm**. It is important to book in advance as numbers are limited. Telephone **07946 596778** to secure a place.

BASINGSTOKE BLUES CLUB



Richie Milton and the Lowdown
on **Saturday, 16th April**

Richie's career started in the sixties when he was 13 years old with his appearance on television. He went on to tour with many famous reggae and souls acts and finally became 'a significant figure of the Blues scene', appearing on TV several times. As an acclaimed writer his work has been appreciated by famous R&B artists. Don't miss their visit to the club as Richie will be supported by a talented 7-piece band whose performances draw praise from other artists and the press alike.

All welcome, **8pm till late. £10 cash on the door**. Licensed bar and low prices.

Future date: **Saturday 21st May – The Backbone Blues Band**

The club will take a summer break in June, July and August.

Profits to Brain Tumour Research – Charity number 1153487



**DESIGN & BUILD, PLANTING, DECKING, FENCING
TURFING, PATIOS, DRIVEWAYS & MAINTENANCE**

FULLY INSURED & CRB CHECKED

CONTACT JONATHAN FOR A FREE QUOTATION

01256 412723 - 0771 7214521

E: info@jcooklandscapes.co.uk

www.jcooklandscapes.co.uk

P.C PROPERTY MAINTENANCE LOCAL HANDYMAN SERVICE

All aspects of home
and property maintenance

- Carpentry • Painting
- Plumbing • Artex/Ceiling
- Repairs • Tiling • Fencing
- General Maintenance

25 Years Experience
Friendly Reliable Service

Call Now On

07796 485747

p.crossin@hotmail.co.uk



Fay Curtis

Diploma in Foot Health, MCFHP, MAFHP.
Member of the British Association of Foot Health Professionals.

Foot Health Practitioner

Professional foot care in the comfort of your own home

- Toenail cutting
- Nail condition treatments
- Corn and Calluses
- Dry and cracked heel remedies
- Verruca treatment
- Diabetic foot care and advice
- Relief from other foot-related conditions

To book an appointment call

07780 664410

www.faycurtis.co.uk



Martin Cole
Plumbing Limited



- Heating Systems • Boiler Replacements •
- Cylinder Replacements • Un-vented Systems •
- Radiators • Pumps, Motorized Valves • Showers •
- Thermostatic Radiator Valves • Water Softeners •
- Bathroom, Ensuite • Cloakroom (complete installations) •
- Household Plumbing Repairs • Taps •
- Ballvalves • Washers • etc. •



Tel: 01256 352419

Local Plumber

martincole@btinternet.com

B&M FENCING

GARDEN & LANDSCAPE SUPPLIES

- | | | |
|---------------------|----------------------|--------------------|
| • Panels (3' - 6') | • Reclaimed Sleepers | • Sharp Sand |
| • Trellis | • Softwood Sleepers | • Building Sand |
| • Concrete Post | • Oak Sleepers | • Ballast |
| • Closeboard Panels | • Decking | • Scalpings |
| • Natural Sandstone | • Rolawn Turf | • 10mm Gravel |
| • Paving Slabs | • Topsoil | • 20mm Gravel |
| • Block Paving | • Landscape Bark | • Decorative Stone |

Delivery Service Available

Mon-Fri
7.45 - 5pm
Sat 9am - 5pm

01256 762739

Fencing
Fitting Service
Free Estimates

www.bmfencing.co.uk

Reading Road, Hook, Hants, RG27 9DB

enquires@bmfencing.co.uk

PROBUS LEARNS TO PLAY THEIR CARDS RIGHT

The development of credit cards was the subject of the latest talk at the **Probus Club of Basingstoke** by Michael Luck, an expert in card payments systems.

First was the Diners Card in 1950 followed by the American Express card in 1958, both printed on cardboard. Now made of plastic they are still called cards. Barclaycard arrived in the late 1960s with a credit card as we know them today. Zip-Zap imprinters used three-part payment slips which the user had to sign.

The magnetic strip was introduced in 1970 and Point of Sale electronic terminals in 1980

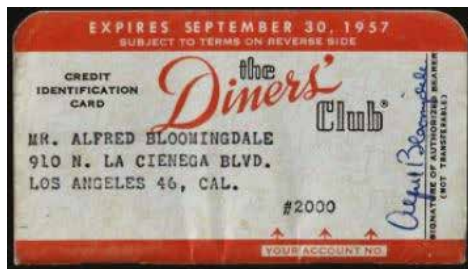
used to swipe the magnetic strip containing personal information, then considered secure. A Frenchman in 1975, developed the use of a chip placed on the reverse of the card while it took until the early 2000s for Safeway to be first in the UK using this technology.

Contactless cards were introduced here in 2008 and had a slow take up, except with young people, when in May 2011, McDonald's introduced this no signature required system.

The Covid pandemic saw the rest of the UK rapidly come to accept this system especially when the maximum limit was raised to £100. However, this also brought about increased fraudulent activity if a card was stolen as no signature was needed.

As banks and retailers boost their security systems, a code will be sent to the user to prove their identity. This is called Strong Customer Authentication (SCA). Some retailers already use this system as do some payment methods including PayPal while Apple Pay on mobile phones use codes, fingerprint or facial recognition to approve payment.

If there weren't so many dishonest people in the world these changes to the security systems would be unnecessary but the banks are doing their best to ensure that only you access your money. Probus website: **www.probusbasingstoke.club**



ST. MICHAEL'S HOSPICE CELEBRATES 30 YEARS



This year marks 30 years since St. Michael's Hospice started seeing patients on Aldermaston Road.

The Hospice has always been funded by the local community and St. Michael's think the community should be celebrating the role it has played in maintaining this vital service. To remember the extraordinary ways in which the community has kept the hospice going, the Hospice is launching its anniversary with an appeal for stories. Do you have a story to share about care you or a loved one received? If you have a tale to tell, get in touch at:

www.stmichaels hospice.org.uk/30th-anniversary

or by email: **sue.oflinn@stmichaels hospice.org.uk**



Hillary de Ferranti cuts the first turf of the Hospice

SIMPLY OUTSTANDING



ST NICHOLAS' SCHOOL

FLEET · HAMPSHIRE

THE SUNDAY TIMES

St Nicholas' School ranked 3rd position in the Sunday Times 2021 Parent Power
(The top independent schools with small or no sixth forms)

St Nicholas' School, Fleet

3rd
BEST VALUE
SCHOOL

62.9%
OF PUPILS

An independent day school for boys aged 3-7 and girls aged 3-16

- Excellent virtual learning for all pupils, throughout the school
- Brand new Interactive 4K UHD classroom screens
- Online concerts, private music lessons and assemblies
- Wide range of after-school activities, challenges and competitions during lockdown
- Outstanding Pastoral Care: newly appointed Director of Pastoral Care and Key Stage 3 and 4 Phase Leaders

T. 01252 850121 | E. registrar@st-nicholas.hants.sch.uk



@stnicholasschool



@stnicholasfleet



stnicholasfleet

www.st-nicholas.hants.sch.uk

Looking for a Letting Service from an Agent who cares? You'll find us on The Street



all
aspects
LETTING
SERVICES

20% Discount with this advert

T: 01256 470411

69A The Street, Old Basing RG24 7BY
info@allaspectsettingservices.co.uk

Zoopa



PROPERTY MANAGEMENT • RELOCATION CONSULTANTS • INVENTORY SERVICES

ST MARY'S CHURCH SUMMER FESTIVAL

The **Summer Festival Team** at **St Mary's Church** are planning the return of the popular **Flower Festival** on the theme of '**A Royal Celebration in Flowers**' with Flowers, Music, Art and Open Gardens.

The weekend will commence on **Friday, 24th June**, at **7.30pm**, with a preview of the Floral Arrangements and Art Exhibition with the opportunity to buy the art whilst listening to Jo Jarret-Kerr, St Mary's Organist. **Tickets**, including a glass of wine/juice are **£6**.

On **Saturday, 25th June**, from **11am** to **4pm** we have stalls, barbecue, cream teas, refreshments and music including the **school choirs** at **2pm** whilst on **Sunday, 26th June**, there will be a more relaxed feel with the raffle and refreshments continuing. Displays on the theme of 'The Queen' will decorate the outside of St Mary's from **Saturday, 25th June** until **Sunday, 3rd July**. There will be an opportunity to **vote** for your **favourite outdoor display** until **3pm** on **Sunday, 26th June**, with a prize awarded to the winner.



If you would like to **sponsor an Outdoor Display**, costing **minimum of £7.50** or a **Floral Arrangement**, at variable costs, email: stmaryschurch.flowerfestival@gmail.com or call **Debbie Filer** on **07541 698235**. Alternatively, entry forms will be available from **St. Mary's Church, website** or **Facebook page**.

Calling all Local Artists and Garden Enthusiasts

The popular **Art Exhibition** will be part of **St Mary's Summer Festival** and we are inviting local artists, whatever their media, to exhibit. Is gardening your pleasure? Would you like to open your garden for others to view and enjoy over the weekend. If you would like to exhibit or open your garden please get in touch.

Jeanette Edwards & the Festival Planning Team

FRIENDS OF ST MARY'S CHURCH QUIZ NIGHT

The **Friends of St Mary's Church**, Old Basing, are holding a quiz night in the **Parish Room** on **Saturday, 2nd April** at **7pm**. All are welcome. Please bring your own refreshments.

There will be teams of six. Create your own team or join one on the night and try to win a great prize. Each ticket costs **£8** for members of the Friends or **£9** for non members. They are available from **Ian Kershaw**, tel **01256 355500** or at igfkershaw@btinternet.com

All the proceeds will go to the charity to fund the maintenance of the church building as a centre for the community of Old Basing.

VILLAGE CAFÉ

The **Village Café** is thrilled to be open and welcoming customers, old and new, on **Friday afternoons** in the **Parish Room**. Our opening dates for **April** are **1st, 8th and 29th** as we will be taking a break during school holidays. Our opening times are **2 to 4pm**.

I would also like to take this opportunity to thank St Mary's church for their ongoing support of the café without which, it would make it extremely difficult for us to operate.

As always, should anyone wish to join our team of volunteers, please get in touch, you will be most welcome. You can contact us via our **Facebook** page or by calling **07901 531152**.

Dear Friends,

I have sometimes been privileged to listen to people who have had a cataract operation and they will frequently tell me that they now see much more clearly and that colours are much more vivid than before, and, sometimes, they say that they no longer need to wear glasses. It must be wonderful to see with new eyes.

Sometimes people who come new to an area or to a workplace can see clearly what others,, who have been in place much longer, may no longer notice. Their ability to see with new eyes brings an objectivity to a situation that might have been missing before, and their observations contain a challenge to the rest of us to look afresh and see things from another angle.



Some great scientific breakthroughs have come about by seeing in a different way, making connections that may not have been made before, noticing what is in front of us and seeing it afresh. Alexander Fleming's discovery of penicillin came about when he looked again and noticed with new eyes what had been beside him in the room in which he was sitting.

It is easy for all of us to get into ruts which confirm our prejudices. It is easy to go along with the tram lines which we have set as perimeters of our vision.

Some of the people who have helped us most in life have been those whose challenge and encouragement has helped us to see with new eyes. They may have been family members, teachers, work colleagues, or people whose thinking we've come across in a book or magazine.

This season of Eastertide is radically and dynamically about seeing with new eyes, approaching life with surprise and freshness, constantly learning, continually growing as people, marvelling at the extraordinary in the ordinary, watching horizons expand.

Are we open to seeing with new eyes, pursuing fresh adventures, and discovering different insights?

With love,

Reverend David Jenkins

ST MARY'S CHURCH

REGULAR SERVICES

Sunday	8am	BCP Communion
	9.30am	Sung Eucharist with Junior Church
Monday	9.15am	Morning Prayer
Wednesday	10am	Holy Communion
Thursday	9.15am	Morning Prayer
Friday	9.15am	Morning Prayer
	10am	Diddy Disciples (Term-time only)



Details of all services are available on our website www.stmarysoldbasing.org.uk (please do not come to church if you have Covid symptoms).

If you have any prayer requests you can contact **Reverend Heather**; text or call her mobile: **07745 731729**.

MOTHERING SUNDAY SERVICE

Sunday, 27th March at 9.30am

EASTER SERVICES AT ST MARY'S

We would love you to join us as we journey together through Holy Week and Easter this April:

Sunday 10th	8am	Palm Sunday – BCP Communion
	9.30am	Palm Sunday Eucharist (meet at The Jubilee Tree, opposite The Bolton Arms at 9.20am, if you would like to process to church)
Thursday 14th	7.30pm	Maundy Thursday service
Friday 15th	noon to 1pm	Reflective Silence
	1 to 2pm	Choral singing and congregational hymns
	2 to 3 pm	Good Friday Service
Sunday 17th	8am	BCP Holy Communion Service
	9.30am	Family Communion Service (In church and online)

CHILDREN'S ACTIVITIES AT ST MARY'S

We have recently launched a new group for **0 to 4 year olds, Diddy Disciples**, which is an opportunity to celebrate God's love through singing and storytelling followed by stay and play. The group meets **every Friday** during **term time** in the **Bolton Chapel** from **10 to 11.15am**. Just turn up – no need to prebook.

Junior Church has now resumed during our **9.30am** service in the **Parish Room**. New members welcome!

WEEKLY BULLETIN

Every Friday we send out a bulletin with information about what is happening at the church. If you'd like to be added to our distribution list email: admin@stmarysoldbasing.org.uk

continued on page 24

continued from page 23

We are also able to **hand deliver bulletins** to those without internet access. Please phone **Debbie** on **07541 698235** if you would like one.

BASINGSTOKE FOODBANK – THANK YOU

We have received a thank you from the Foodbank for the generous financial and food donations throughout 2021 from St Mary's Church. Donations received during the year amounted to 1,483kgs which is equal to 3,156 meals! Throughout the year the Foodbank was able to feed 7,600 adults and children through their partnerships with local agencies. Now in its 10th year, there is now a local centre open every weekday in the town. Thank you for your continued generosity. Please do continue to drop items off to **The Vicarage** (located on the corner of Church Lane and Milkingpen Lane) or one of the other local collection points: the **Co-op** on Linden Avenue, and **Tesco** at Chineham. For a list of items that are in particular short supply please visit the foodbank website: **www.basingstoke.foodbank.org.uk**

HALL FOR HIRE

The **Parish Room** at St Mary's Church, including the kitchen, is available for hire. There is availability for both regular bookings and one-off bookings. All enquiries to Debbie, **admin@stmarysoldbasing.org.uk** or phone **07541 698235**.

CHURCHYARD CONSERVATION GROUP – PIOC



Spring has arrived, the grass is growing, there is more to be done so this month the Thursday afternoon working parties will resume. The working parties will be on **Saturday, 2nd April, at 10am** and **Thursday, 28th April at 2pm** – meet by the PIOC noticeboard at the entrance to the Conservation Area. All are very welcome. We look forward to seeing our regular volunteers and also new participants.

We are a community project, not just for churchgoers, so please come along if you would like to be involved. We will welcome you warmly. Just turn up in gardening clothes and bring gloves. Tools are provided. Our Saturday morning sessions last about three hours (with a coffee break and chance to relax) and our Thursday afternoons about two hours.

We are delighted to be able to re-start our indoor meetings programme. Our **AGM** is on **Monday, 4th April, in St Mary's Parish Room at 8pm**. We will keep the business short. Then Margaret and Tim Carr will give their illustrated talk on 'Arctic Sweden in Summertime', showing us the landscape and wildlife, especially the flowers they saw in mid-summer 2018. We look forward to seeing you.

The Conservation Area is a community space for everyone to enjoy. The cowslips are flowering, butterflies on the wing and birds singing as they start nesting. Hopefully they are taking up residence in our nest boxes. We have new boxes for Nuthatch and Treecreeper. Why not come and see what you can find? The WI seat is a lovely spot for quiet contemplation.

For further information please ring **Fay Farrant** on **01256 476863**.

Margaret Carr

www.stmarysoldbasing.org.uk

Berryford

Accountancy Services

Do you need an accountant?

We offer an accountancy service for small businesses and individuals

Year End Accounts
Bookkeeping
VAT and Tax
Personal Tax Returns

01256 472832 07790 948310

mike@berryford.co.uk

www.berryford.co.uk

A. SEWELL

www.asewell.co.uk



Lighting, Electrical & Audio Visual

All Lighting and Electrical work undertaken including:

- Security & Emergency Lighting
- Interior & Exterior Lighting Design & Installation
- TV, Telephone and Data Distribution
- Multi-room Audio/Visual
- Alarm Systems, CCTV & Door Access Systems
- Electrical Alterations & Re-wires



01256 329893

01252 844663



LEWIS

HEATING & PLUMBING

*We are a local reliable family business and strive to provide outstanding customer service & workmanship;
Endorsed by Which Trusted traders.*

- Boiler installation & servicing
- Central heating repairs / Smart thermostat installation
- Power flushing / New radiators & valves
- Gas hob & Gas cooker installations
- Landlord Gas safety certificates
- Showers/Sinks/Taps/Toilets
- Water softener installation
- Cold water storage tanks / Ball valves
- Unvented hot water storage installation & servicing
- Immersion heater & Vented hot water cylinder replacements



Telephone: 01256 413716

Mobile: 07804 030889

email: mark.lewis97@ntlworld.com

web: lewisheatingandplumbing.co.uk

OLD BASING VILLAGE HALL

*Whatever your function needs
your
Village Hall can meet them.*

Contact: Booking Secretary

Mobile: 07544 289932

Email: bookings@oldbasingvillagehall.co.uk



A-Fordable Domestics

WE REPAIR...

**Washing Machines, Cookers, Dishwashers, Fridge Freezers,
Ovens, Vacuum Cleaners & Tumble Dryers.**

Repairing
Since 1995

Low
Pricing

Family
Run

Qualified
Engineers

Basingstoke
Based

**Call: 07891 465499 | Email: afdomestics@engineer.com
Web: www.afdomestics.com**

OLD BASING METHODIST CHURCH

Sunday Worship begins at **10.30am**

Tuesday, 5th April, at **2.30pm**, you are welcome to come for a chat and a 'cuppa' and bring along your current craft project

Thursday, 7th April, at **2.30pm**, the final session of **Reflections during Lent** takes place with **Rev. David Jenkins**

Friday, 8th April, at **10.30am** there is a **Coffee Morning**

Wednesday, 13th April, there will be the **MHA Lunch**

Good Friday, 15th April, at **3pm** we have a short time of **Readings and Reflections**

Easter Day worship, Sunday 17th April, at **10.30am** will be led by our minister **Rev. David Jenkins**

Everyone is warmly welcomed to any of these meetings

THE BASINGSTOKE LIONS CLUB

WE'RE 'ROARING' AGAIN!

Ending what was for pretty much everyone a 'challenging' period with our customary supermarket Christmas 'tinsakes', we were concerned the great Basingstoke public may not feel so 'charitable to charities', especially at that expensive time; how wrong we were. Sincere thanks to everyone who reached into their pockets for whatever they could afford.

And in February we got into the musical groove again – finally! Readers may know we excel at putting on events to gladden the musical heart, either through still and soundless listening or, as in the case with our magical Motown/Soul evening (courtesy of the supremely talented Mr. Lou Taylor), some manic bopping – a lot of booty-shaking was in evidence – all accompanied by an overriding vibe that it was so 'good to get out there again'.

On the strength of our successful October book sale, another was staged specifically in the February half term ('Lennie' is a vital ingredient for some of the smaller readers) and with equal success, although prepping it during Storm Eunice, was...interesting!

By the time you read this our annual, but not for two years, Swimathon will either have happened. Nine teams competed for the trophy, swimming relays in limited time; always a popular event.

In **April** we hope to revert to the first of our bi-annual **face-to-face quizzes**, having coped magnificently throughout the last two years with puzzling people via Zoom.

The merry month of **May** will see a concert by the popular **Heritage Orchestra** at the **Haymarket Theatre** in the town; for more information online at the Lions Club website: www.basingstokelions.org.uk where all events, club news, social activities and much more can be easily found.



We supply & install:

- Loft ladders & loft hatches
- Boarding, lighting & insulation



CREATING SPACE THE EASY WAY!

HUGE BENEFITS

- De-clutter your home
- Create up to a third more space
- Gain safe & easy loft access
- No mess, no fuss, no sub contractors
- DBS checked & fully insured
- Which? Trusted Trader



Call Pete now to book a FREE survey & quote

01256 688648

WWW.ACCESS4LOFTS.CO.UK

The Complete Tree Service



- Residential & commercial work
- Tree removal, thinning & lifting
- Scrub clearance & hedge trimming
- Stumps removed

Fully trained & certified staff
£10m Public Liability Insurance

Health & Safety focused
30 years experience

We guarantee we can help. Call for professional, friendly advice...

Teams all over Hampshire, Surrey, Sussex & the South:

01256 763 162

Visit our website for images, video footage,
client lists and more:

www.cedardale.co.uk

Checkatrade.com
Where reputation matters



BASING HOUSE RUINS AND GROUNDS

Plus museum, garden, activity trail, workshops,
outdoor theatre, special events and more!



THINGS TO DO

- Discover the Great Barn and spot the artillery damage still visible on its walls
- Explore the ruins and imagine what the house would have looked like
- Visit the walled garden and learn about Basing House's fascinating history in the museum
- Walk your dog or find a picnic spot

INFORMATION

Pay once, visit all year! With your ticket, you can enjoy unlimited visits to Basing House and return as many times as you like for a whole year! See our website for full details, admission prices and opening times.

BASING HOUSE | Barton's Lane | Basingstoke | Hampshire RG24 8AE

Please call 01256 639550 or email basing.house@hampshireculturaltrust.org.uk



www.hampshireculture.org.uk/basing-house

Hampshire Cultural Trust is a registered charity (no. 1158683) and company (no. 08984225) in England and Wales.

BASINGSTOKE U3A

Happily Sharing our Interests with Each Other

It's hard to come to terms with current world events, and many of our members are finding meeting others, and having a good chat, can make a big difference to how they feel; especially as all our get-togethers are for people sharing something they really enjoy doing.

Not all of us want to take part in the more active, physical outdoor activities we can offer, but the U3A supports many things to do indoors as well. These range from groups such as country dancing, badminton and table tennis, to more sedentary fun taking part in hobbies such as sewing and knitting, singing, arts and crafts, Bridge, Rummikub and Scrabble, MahJong and quizzes.

Some are face to face, some still Zoom, some a bit of both – our website is the best place to check them out: **www.basingstokeu3a.org** or **facebook.com/Basingstokeu3a**

There are always visits, excursions and holidays to take part in too; there's a trip to RHS Wisley in May for example. And as we are half way through our membership year, you can now join in with as many activities as you want for only £25!

U3A groups are all organised by one of their members, supported by a central committee which brings them together every month in Queen Mary's College. If you've got something you'd like to do which isn't on our list, do please get in touch with us and we can help you try to set up a new group of your own. It isn't difficult. So do get in touch, we're here to help.

If you're not online and would like a paper copy of all our current activities then please phone: **07787 520281** or email **basingstokeu3aenquiries@gmail.com**

Linda Wain

ROTARY CLUB OF BASINGSTOKE

BASINGSTOKE FESTIVAL OF TRANSPORT

A great day out for all the family! **Sunday, 8th May, from 11am to 4pm.**

The **Memorial Park** will again be filled with over 1,000 different types of vehicles on static display – cars, and motorcycles as well as buses, fire engines, commercial and military vehicles.

There will also be a variety of specialist car clubs, trade stalls, with all manner of items for sale from motor jumble to plants together with catering outlets and live music.

THE PINK PLACE CANCER CHARITY

As well as the trade stands, amongst them you will find some of the charities our Rotary Club supports. We are pleased to be able to provide an opportunity for them to showcase the important work that they do, and for them to fundraise to fill their coffers after a difficult time.

BASINGSTOKE YOUNG CARERS

Young carers are children and young people who care for a parent or sibling with a long-term illness or disability. Giving them time away from their responsibilities is key to their well-being. Their team will be fundraising to give these deserving young people respite time away, with programmes and activities where they can make friends and have fun to build up their resilience. Visit their stand and support their fundraising.

ADVERTISE IN THE BASINGA

All sizes available:

Enquire by email to advertising@basinga.org.uk or visit www.basinga.org.uk on the 'Advertise with us' dropdown menu for Contract, Classified and Flyer Distribution details.

At no additional cost:

All adverts appear on our website.

Adverts can be changed throughout the year.

Contract Adverts can be linked to the advertisers website and to an optional, advertiser supplied, write up on their company and its activities and can include photos.

S. M. DECORATORS

*Interior & Exterior
Prompt & Efficient Service
Competitive Prices
Fully Insured Company
Over 25 Years Experience
Skim Plastering and
Paperhanging Specialists
City & Guilds Qualified
All Work Guaranteed
For Your
Free Estimate Or Advice
Please call Steve on
01256 811929*

Weller Mackrill

**Chartered Certified Accountants
and Tax Advisers**

Accounts - Tax & VAT Returns - PAYE & CIS - IR35 advice
Company formations - Tax planning - Free initial consultation

Weller Mackrill, South Building, Upper Farm, Wootton St Lawrence,
Basingstoke. RG23 8PE

For a friendly and sensibly priced service
Please ring **01256 782059**

E-mail:

paul@wellermackrill.co.uk
james@wellermackrill.co.uk



Over 35 years experience in all types of domestic, commercial and industrial fencing

FREE estimates and advice with **no obligation** and good quality workmanship are **GUARANTEED**

CALL US 01256 358 940
www.fencing-in-basingstoke.co.uk



It's April and the month, which in the UK (and some other countries), begins with pranks.

In Scotland, **April Fools' Day** is 'celebrated' over two days (1st and 2nd April). It is traditionally called 'Hunt the Gowk Day' because gowk means 'cuckoo' or 'a foolish person' and the gowk (an unsuspecting person) would be sent on a bogus errand. Before the likes of emails and text messages, they would be sent away with a letter to someone who lives two or three miles off, which he/she thought was asking for a favour, but in reality only contained the words: 'Dinna laugh, an' dinna smile. But hunt the gowk another mile.' The person to whom the letter was sent would realise what was going on and inform the carrier that they are unable to help, but take a second note to Mr/Mrs So-and-so, they will get what is wanted. The obliging carrier goes off to next person, only to be treated in the same manner and so on until at some point, the penny finally drops.

On the second day, 'Taily Day' paper tails are attached to people's backs. It is thought that the origins of the 'kick me' sign can be traced back to the Scottish observance of Taily Day. But how did all of this joking around start? Well, some say that it was when France adopted the Gregorian calendar and not everybody accepted or was able to get their heads around the new system and some continued to follow the Julian calendar which had new year on or around 1st April. They were then branded 'fools'.

Anyway, if you want to keep the grey matter working and not be labelled a 'gowk', maybe consider joining one of our language classes?!

HAMPSHIRE & ISLE OF WIGHT WILDLIFE TRUST

SEAGRASS: THE SOLENT'S SUPERHERO

Beneath the waves of the Solent are hidden underwater gardens of seagrass. These marine flowering plants are known for increasing biodiversity in our coastal waters. However, they are now beginning to gain widespread recognition for their potential to reduce the effects of climate change. Sadly, seagrass is disappearing. We've lost over 90% of our seagrass meadows in the UK over the past century. Disease, physical disturbance from dragging anchors and chain moorings, as well as human-induced threats such as pollution are putting seagrass under significant pressure.



At Hampshire & Isle of Wight Wildlife Trust, we're working to protect and restore our seagrass meadows. By monitoring and surveying existing seagrass beds and planting sustainably collected seagrass seeds, we hope to restore these amazing habitats towards their historic levels and create a wilder Solent, for both people and wildlife.

To learn more and find out how to get involved, visit hiwwt.org.uk/seagrass-restoration

W.T.HILL

Painter & Decorator

Internal & External

Over 30 Years Experience

Tel: 07748808069/01256 467901

Free Quotations

Proud members of

Checkatrade.com

Where reputation matters



Quality Dentistry & Denture Expertise
Emergency Same Day Denture Repair
Award Winning Best Patient Care

Our highly experienced Dental Team headed by Director Fabio Bevilacqua wish to reassure our patients we are working within the current COVID-19 Government Guidelines to ensure our patients comfort and safety.

01256 355 268 info@italdent.co.uk www.italdent.co.uk

Unit Q, Loddon Business Centre, Roentgen Road, Basingstoke RG24 8NG

Implants
Dentures
Crowns
Bridges
Veneers
Hygiene
Whitening
Aromatherapy
Hypnotherapy



Lee Quinlan



Kitchen

&



Bathroom Fitter

You buy it and I'll fit it!

"One stop" service for accompanying:

Plumbing, Tiling, Plastering,
Flooring & Woodworking

Electrical Work



01256 811830

email: enquiry@leequinlan.co.uk

web: www.leequinlan.co.uk



WESTPORT GREY

BUILDING CONTRACTORS

01256 636511

Extensions | Loft Conversions | Renovations | New Builds



WWW.WESTPORTGREY.CO.UK

Westport Grey Ltd. - Registered in England - No. 6216684

BUILDING YOUR DREAMS

ANDWELL BREWING COMPANY



Looking for somewhere new to go to in Hampshire? Then taking a visit to **Andwell Brewing Company** in Hook is definitely a place you should consider this year! Located down a quiet lane off the A30, Andwell Brewery has been brewing since 2008 and over the recent years has expanded with a brand new **Brewhouse, Cafe and Shop**.

Andwells aim to brew real ales, IPAs and lagers, with an ethos to produce great beer at a great price with only the finest ingredients. Throughout the year, we offer our core ales and bring out limited edition and seasonal beers, definitely be something to suit everyone.



Intrigued by our brewery? Why not come and see for yourself what goes into making our beautifully crafted Hampshire beers. We offer brewery tours on selected dates, you will receive a guided tour of the brewery, and a chance to learn about all the different ales.

During the day you can enjoy a variety of refreshments and you might be tempted by the freshly baked cakes. **Light lunches** can also be enjoyed between **noon and 3pm**.

Offering 'Pop-Ups' every **Friday night from 5pm** with different cuisines to try, from pizza to Lebanese, it's also a great place to pop by to grab some delicious food and great beer before the weekend. The Brewhouse also offers a perfect event space for conferences and private parties throughout the year.

Check out our website **www.andwells.com** and follow us on social media @ **andwellbrewery** and keep up to date with events and new products. **Present this article at Andwell Brewery to receive 10% off any drink.** Our opening hours, which could change due to season and events, are: **Monday to Thursday 10am to 5pm; Friday 10am to 9pm; Saturday 10am to 4pm.**

PLAY CROQUET!

If you would like to give it a try we will be having open days on **Saturday 14th May** and **Sunday 15th May**. Just turn up any time between **10am** and **2pm**. Equipment will be provided, just wear casual comfortable clothes and flat shoes. There is no charge for a try-out. Until then you might like to look at the excellent training videos on our website.

www.basingstokecroquet.co.uk

OLD BASING ROYAL BRITISH LEGION – WOMEN'S SECTION

We are holding a **Spring Sale, Saturday, 9th April, 2 to 4pm**, with the opportunity to have a delicious cream tea as well as get yourself a bargain. On sale will be jewellery, books, jigsaws, bric-a-brac, toys, crafts and the chance to win a super prize on our tombola stall. Entry will be **£4.50**, including cream tea; **£1** for entry with tea or coffee; or **50p** entry with no refreshments. All proceeds to the Royal British Legion. We look forward to seeing you.

Sue Wilson (Publicity)

HARMES & CO ROOFING

www.harmesandco.com info@harmesandco.com

07769 351165

Roofing repair specialists

Free no obligation estimates and advice

Guttering, Downpipes, Tiling, Slating, Lead and Cement work, Chimney repoints, Pots and Vents, Loft Insulation



Highly Rated Members of
Hampshire County Councils
Buy With Confidence Scheme

Home Maintenance Services

Family Business • Fully Insured • Free Quotations

References by Request • 25 Years' Experience

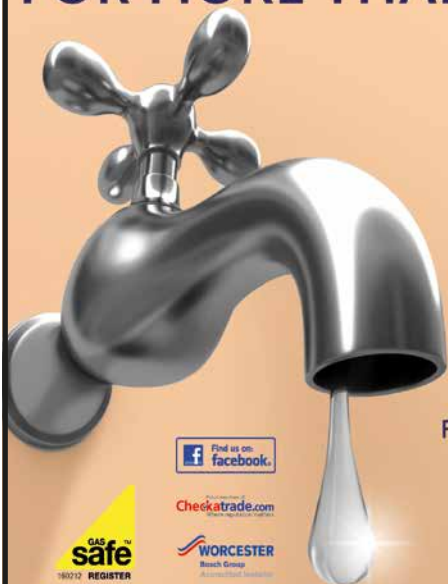
Fencing • Drylining/Studwalls • Painting/Decorating • Laminate Flooring • 2nd Fix Carpentry
Plumbing • Tiling • Fitting/Designing of Kitchens and Bathrooms

Marcus Underdown **Property Maintenance Expert**

01256 479327 • 07878 078135 • mtunderdown@virginmedia.com

"We do anything from changing a tap to refurbishing your bathroom"

FOR MORE THAN JUST A LEAKY TAP



Niall Catlin PLUMBING & HEATING

EST 1991

Leaky taps to full bathroom installation
Power flushing | Water softeners | Hot water cylinders

Boiler breakdowns, repair and servicing
Boiler replacement | All allied trades
All aspects of plumbing and heating



Checkatrade.com
Checkatrade.com

WORCESTER
Boach Group
Associated Gas Safe



www.niallcatlin.co.uk

01256 818086 | 07774 741021



Serving Basingstoke for over 38 Years



Many Items in stock for Fast Free Delivery

Showroom

The old Station Andover Rd
Oakley Basingstoke RG23 7HA
Tel: (01256) 782070
OPEN 9am - 5pm MONDAY - FRIDAY CLOSED WEDNESDAY
SATURDAY 10am - 4pm

CARPET EDGING SERVICE

ALSO AVAILABLE

Rugs Made Your size

VINYL, WOOD, CARPETS, LAMINATE,
FURNITURE FOR THE DINING ROOM, LOUNGE, BEDROOM
AND STUDY

www.oakley-furnishing.co.uk



British made Beds Free Delivery Approx 1 week

10
YEAR
GUARANTEE



NJP Heating Services

0% finance

on all Worcester Bosch boilers

complete with up to 10 year guarantees on all
Worcester Bosch boilers and controls

Contact us today for your free quote

07717 741999 or
01256 782202

nick@njpheating.com | njpheating.com



OLD BASING ROYAL BRITISH LEGION

BRANCH MEETING

Monthly Branch Meeting: Thursday, 5th April, 8pm (Jack Morris Hall)

WOMEN'S SECTION

Committee Meeting: Thursday, 14th April, 7.30pm (Jack Morris Hall)

General Meeting: Thursday, 28th April, 7.30pm (Jack Morris Hall). New members very welcome. Competition a holiday photo.

OLD BASING WI



Our March speaker was another local resident, Ryland Lee, who gave us a very well-received talk about the work of Naomi House and Jack's Place. "An excellent speaker and a very interesting subject" was just one of the comments made by our Members!

Our craft group had a trip to Whitchurch Silk Mill for a look at the Basing Stitchers exhibition, 'Picking up the Thread', where a couple of our talented members were exhibiting their craft work. Ten Members also had a trip to The Haymarket to see *Kinky Boots* performed by BAOS.

At our **next meeting on Tuesday, 5th April, at 7.30pm**, we will be renewing our membership, playing a few games of bingo and looking forward to our **'Tiara and Crown'** tea party on **Thursday, 7th April**, to celebrate the Queen's Platinum Jubilee. The Committee is working hard to arrange a lovely afternoon of food and fun for our members.

On **Saturday, 7th May**, there is an exhibition of **'What the Bride Wore'** at **Viabes Community Centre**. This event will be open to all, and further details will follow.

Details of the WI in Hampshire their activities can be found at www.hampshirewi.org.uk

If you would like to join our long-running and thriving group, please contact our President, **Sue Stewart**, by email oldbasingpres@hampshirewi.org.uk

THE MILL FIELD LOCAL NATURE RESERVE



WHAT'S AROUND THIS MONTH

With spring underway watch out for the very early migrants; visibly the swallow and also you should be able to hear the breeding Blackcap and Chiffchaff singing. Other birds to listen out for are from the finch family – Bull Finch, Gold finch and Greenfinch.

There is a last chance to see the Fieldfare or Brambling before they head north. Another sign of spring are the first butterflies of the year, such as Brimstone, Small Tortoiseshell, Peacock and Red Admiral and maybe Orange Tip or Holly Blue as the supply of their food builds up. With longer days you should also see some of the mammals moving through the field, such as the roe deer or a fox.

Anne Francis – Tel. 07974 944439

Email: millfieldnature@gmail.com

Facebook: **Mill Field Conservation Group**

APRIL IN YOUR GARDEN

"April is the cruellest month, breeding lilacs out of the dead land, mixing memory and desire, stirring dull roots with spring rain", according to T S Eliot in *The Waste Land*.

I don't know about the cruellest, April is one of the the busiest times in the garden, but you shouldn't panic, tackle one job at a time and you'll get it all done. Remember to take time to enjoy this most precious of months. If we are blessed with fine weather spend some time to sit in the sun and admire any colour you have in the garden. While you are sitting there, no need to be totally idle, take a note of any gaps in your spring planting to order any bulbs in the autumn for next year.

Due to the cold and wet soil at this time, early sowings outside may prove difficult, but by warming up the soil of prepared areas with cloches it will protect from not only frost but also rain. It's advisable to leave the cloches in place for at least two or three weeks. Remove them temporarily to rake the soil prior to seed sowing and planting out of young seedlings, and then replace the cloches to give the young plants a good start.

For carrots sown under cover last month, now is the time to thin them out. You will achieve much bigger crops this way. For those without the luxury of a greenhouse, or other such covers as cloches as just described, you may plant your carrot seeds out in the soil. Carrot fly can be a real pain; they will burrow in and destroy your carrots. Although they are a fly, they have poor wings and cannot fly above 15 cm (6 in) off the ground; therefore one such way to combat them is to grow them in pots off the ground. Avoid thinning out in the daytime, as the smell will attract them, wait until evening. Speaking of smell, it can be masked by sowing carrots between rows of onions and garlic in an attempt to confuse the fly. If all else fails, cover with fleece.

There are many more things to sow in the vegetable garden, beetroot, peas and broccoli to name but a few. Plant out new strawberry beds this month, making sure to incorporate plenty of well-rotted manure to get them off to a good start. I find that the slugs and snails get to ground-grown strawberries, however, I prefer to grow mine in hanging baskets, where they trail over the edge in a lovely display, or if you fancy a fun project, you can grow them in an upturned pallet. (Look online for detailed instructions.)

Remember to feed your plants this month, after a long winter shrubs, trees and hedges are putting out a lot of new growth and are hungry. Use a slow, balanced fertiliser for shrubs, trees and hedges, and fork it into the soil around the trunk. Roses are very greedy and really do well with a good feed as they put out new growth. I like to sprinkle blood, fish and bone powder around over-wintering onions and garlic, and work in very gently to the soil.

Plant chitted-potatoes when the weather allows, not when it's too cold, leave it until the last week in April, better to be late and let them catch up than risk having no potatoes at all.

Houseplants are becoming more active now the hours of daylight are increasing. They may put on a lot of growth and require more watering than usual. Citrus plants will be doing the same; they will need more regular feeding and much more regular watering (always use rainwater). It is a good idea to re-pot a lemon tree each spring, increasing the pot size by 3 inches (8 centimetres) each time, until it sits in a 1ft 8 in to 2 foot (50 to 60 cm)-wide pot.

A final reminder to watch out for frosts when fruit trees are blossoming. Pear is especially vulnerable as it blossoms early. Protect with fleece as necessary.

So in this cruellest month, just be kind to your plants, and kind to yourself, and you will be rewarded later in the year with beautiful blooms and bountiful produce.

NATURE NOTES FOR APRIL

I'm hoping that as you read this, spring really has begun to show its face because the weather today (2nd March) is absolutely horrible, again! Dull wet conditions do not inspire one to get outside to walk, nature watch or garden but at least I'm getting on with my Notes in good time (although news is a little sparse this month). Our feathered friends will not concern themselves with rain or anything else to prevent them beginning to nest as it is the longer daylight hours that unlocks the instinct to breed. We humans only really notice this increase because of what our clocks say and now they have just 'sprung forward' it just feels better. There's nothing better either than to hear Skylarks singing high above one in a bright blue sky so this sound brought a smile to Stephen Thair's face when he noted one or two across the Common last week. My wife and I had a day at the Point to Point races at Larkhill on Sunday (27th February) and above the race commentary was an almost continuous gorgeous song of a Lark from way above us (and even with binoculars I couldn't see it!)

Many thanks to other contributors this month, Chris White in Pelham Close sent me an annual report on the state of play in his garden but admitted that this winter has been a disappointment for rarities such as Siskins, Lotties or Bullfinches. But there is always enjoyment at watching a Wren or a couple of Blue Tits creeping through the climbing roses seeking out early aphids.

Terry McAnish sent a couple of shots of Greenfinches on his feeders, an evermore rare sighting sadly these days. And sad news that the bad weather virtually destroyed a hedgehog house he had located in a 'quiet' corner so the spiky occupant up sticks and left!

Jim Andrews has been out snapping away again and found the Millstones Kingfisher as obliging as ever for some great photos but I've included a picture of a **Water Rail (see front cover)** that Jim patiently waited to find as it skulked around the ponds near the Tithe Barn.

I've a tall privet hedge that needs a foot taking out of the top and 'the books' say, now is the time for radical pruning. Only trouble is that it's a popular place for Blackbirds to nest so I've got to be cautious before starting on what is a bit of a project!

Just referring back to Blue tits, a species that is pretty much one of the last to lay eggs, there have been many busily pecking the entrance holes of nest boxes in ours and the neighbours gardens so I'd be very disappointed if at least one doesn't get selected. I'm also hoping that the **Great Tits** that laid in our **fake letterbox** last year (see photo, right) also return as they were most endearing.



My better half found a good offer for nest boxes online some months back and purchased half a dozen, two to replace derelict ones of ours and we've also given a couple to the Churchyard Conservation group as some of the cemetery nesting sites have been trashed by squirrels or woodpeckers. Hoping the new accommodation appeals to someone!

Don't forget to send all your nature related photos to rickbourne@yahoo.com or naturenotes@basinga.org.uk or ring **01256 321108** for news. For all your bird food requirements, order it from me at 'Bird Drop-ins' use the former email address or ring/text me on **07900 648675** to place an order or get a form.

Rick Bourne

DIARY DATES FOR APRIL

For details of services and events at St Mary's Church please see page 23

APRIL

Fri 1	10.30am – noon	First Friday Coffee Morning (3 Whitehead Close, Lychpit)
	2.00pm – 4.00pm	Village Café (Parish Room, St Mary's Church)
Sat 2	10.00am – 1.00pm	PIOCC Working Party (meet in Conservation area)
	7.00pm	Friends of St Mary's Church Quiz Night (<i>see page 21</i>)
Mon 4	8.00pm	PIOCC AGM (Parish Room, St Mary's Church)
Tue 5	7.30pm	Old Basing WI Meeting (Parish Room, St. Mary's Church)
	8.00pm	RBL Monthly Branch Meeting (Jack Morris Hall)
Wed 6	10.00am – noon	Civil Service Retirement Fellowship (Brookvale Hall)
	11.00am – 4.00pm	Basing House re-opens (<i>see page 4</i>)
Thu 7	TBA	Old Basing WI 'Tiara and Crown' tea party (<i>see page 35</i>)
Fri 8	2.00pm – 4.00pm	Village Café (Parish Room, St Mary's Church)
Sat 9	2.00pm – 4.00pm	RBL Womens Section Spring Sale (Jack Morris Hall)
Sun 10	DEADLINE FOR MAY BASINGA COPY TO EDITOR (<i>see page 3</i>)	
Wed 13	7.45pm	BDRS meeting (Wote St. Club, New Road, Basingstoke)
Thu 14	7.30pm	RBL Womens Section Committee Meeting (J Morris Hall)
Sat 16	8.00pm	Basingstoke Blues Club (<i>see page 17</i>)
Thu 21	12.25pm	Ploughman's Lunch (Parish Room, St Mary's Church)
Wed 27	7.45pm	BDRS meeting (Wote St. Club, New Road, Basingstoke)
Thu 28	2.00pm – 4.00pm	PIOCC Working Party (meet in Conservation area)
	7.30pm	RBL Womens Section General Meeting (Jack Morris Hall)
Fri 29	2.00pm – 4.00pm	Village Café (Parish Room, St. Mary's Church)

BASINGA EXTRA

This month we were unable to include every article that we received, or submitted long after the deadline. Content listed below is available on our website: **www.basinga.org.uk**

Basingstoke Civil Service Retirement Fellowship *Blue Lamp Trust*

Basingstoke and District Railway Society *Co-op switch to re-useable bags*

National Womens Register *Debt Helpline*

St. Michael's Hospice at 30 *HIWWT – Seagrass (full article)*



Now open in Belle Vue Rd

Old Basing.

Hairdressing for the whole family.

01256 357333

GARDEN SOLUTIONS NEIL INKLEY

SPECIALIST IN FENCING, TURFING,
PATIOS ALSO GENERAL GARDEN WORK
including Lawns, Hedges, Clearance,
and Pressure Cleaning

Local References Free Estimates

01256 882108 or 07768 105488

M.C.PEGG

Plumbing, Heating & Gas Services

Local & Reliable

All Plumbing and Heating Installations

Gas Safe Registered - 195010

Bathroom Suites/Shower

Gas Safety Certificates

Boilers, Hot Water Tanks,

Heating systems,

Servicing

FREE ESTIMATES



Tel: 01256 308462

Mob: 07973 217020

Email: matthew.pegg1@btinternet.com

Basing Pedicare

Fully qualified mobile Foot Health Practitioner

- Toe Nail Cutting
- Corn And Callus Management
- Diabetic Foot Management
- Verruca Care



Contact

Malinda Snook MCFHP MAFHP

**to make your appointment-
I visit you in your home!**

07751 474322

Spencer & Peyton Ltd

Established 1961

3rd Generation
family owned
and run Funeral
Directors and
Monumental
Masons

24 Hours



Our family serving your family for 60 years

**380 Worting Road
Basingstoke, RG22 5DZ**

01256 323165

**7 London Road
Hook, RG27 9DY**

01256 761717

Trading Standards approved

**Pre-paid funeral plans
discussed without obligation.**

**funerals@spencerandpeyton.co.uk
www.spencerandpeyton.co.uk**

ON SITE FLORIST



01256 355556

www.theflowergirlflorist.co.uk



Did you hear
ST. MICHAEL'S HOSPICE
has an **ebay** store?

Whether
**antiques &
collectibles** are
your passion

or maybe it's
fashion,

you love playing
games.



or sprucing
up your
home,



you can shop for what you need
and support your local Hospice. Go to
our website and follow the link for **ebay**.
www.stmichaelshospice.org.uk



High quality and friendly MSK,
Back Pain and Neck Pain service
with professionals who listen

Annette and Gordon Linscott

35 Years in Basingstoke
Now on your doorstep

East Barn, Lychpit Centre
01256 466 666

www.spineteam.co.uk



THERMOFLUX
PLUMBING AND HEATING SERVICES

Fully insured | Over 16 years experience |
Free no obligation quotations

Boiler and heating system installation specialist

General plumbing

Bathroom installations

Water softener installations

Power flushing

Un-vented hot water systems



T: 07891 226591 E: Thermofluxplumbing@outlook.com



SERVING THE PEOPLE OF BASINGSTOKE & NORTH HAMPSHIRE SINCE 1968

**FINANCE
NOW
AVAILABLE**

Please ask
for details

DESIGN,
SALES & FULL
INSTALLATION
SERVICE

01256 363123 | twoguys.co.uk

ARMSTRONG ROAD, DANESHILL EAST, BASINGSTOKE, HAMPSHIRE RG24 8NU

● BASINGA

EDITOR: Colin Follett, 101 The Street, Old Basing, RG24 7DA	01256 326909
LAYOUT ADVISOR AND ASSISTANT EDITOR: Lyn Caswell	01256 464800
ADVERTISING: Alan Rowden, 21 Basingfield Court, Old Basing, RG24 7BG	01256 473590
SECRETARY: Graham Merry, 40 Linden Avenue, Old Basing, RG24 7HS	01256 463908
TREASURER: Andy Groves, 30 Pyotts Copse, Old Basing, RG24 8WE	07918 644187
DISTRIBUTION:	
Old Basing Area: Peter Watson, 19 Priory Gardens, Old Basing, RG24 7DS	01256 352299
Lychpit Area: Andree McLean, 6 Pimpernel Way, Lychpit, RG24 8SS	01256 819006
WEBMASTER: Alan Morris, 29 Lingfield Close, Old Basing, RG24 7ED	01256 329417

● OLD BASING & LYCHPIT PARISH COUNCIL

CLERK: Sandra Tuck	01256 462847
OFFICE AND HOURS: The Pavilion, The Recreation Ground Monday to Thursday 10am to noon	

● CHURCH INFORMATION FOR THE AREA

Church of England (Parish of Old Basing & Lychpit)

VICAR: Rev'd Heather Leppard, The Vicarage, Church Lane, Old Basing Email: vicar@stmarysoldbasing.org.uk	01256 363612 07745 731729
ADMINISTRATOR: Debbie Filer	07541 698235

Regular Services at St Mary's Church, Old Basing

SUNDAY: 8am Holy Communion; 9.30am Sung Eucharist and Junior Church

OTHER DAYS: Wednesday, 10am – Holy Communion; Monday, Thursday and Friday, 9.15am – Morning Prayer

Changes to the regular service pattern and other weekday services are shown in the weekly news-sheet, a copy of which is displayed on the noticeboard in the church porch

Old Basing Methodist Church

MINISTER: Rev'd David Jenkins	0118 3271592 07973 195566
SUNDAY SERVICE: Morning Service 10.30am	

Roman Catholic

PRIEST: Fr Dominic Adeiza St Bede's Church, Popley Way, Basingstoke	01256 465214
SUNDAY MASSES: 9am, 11am and 6pm	

need a **painter** and **decorator**?

- professional
 - friendly
 - affordable
- 
- experienced
 - reliable
 - fully insured

call us today for a free no obligation quote

01256 334852 07919 358050

pscdecoratingservices@gmail.com

Infinite Harmony Hatha Yoga

4 classes to choose from:

Gentle Chair Yoga

If you have mobility/injury concerns then this is the class for you. All yoga is done on a chair and using props.

Monday's

14.00 - 15.00

Lychnpit

Community Hall

Relax Yoga

This class is for all levels of ability and uses postures to help you relax and deepen your yoga practice.

Tuesday's

19.15 - 20.15

St Mary's

Church Hall,

Old Basing

Sunday Morning Yoga

This class is for all levels of ability and focuses on strength and flexibility.

Sunday's

09.15 - 10.15

Lychnpit

Community Hall

Sunday Night Satsang

This is deep relaxation yoga. You will be led through a series of gentle yoga postures followed by an extended guided meditation.

1st Sunday

of the month

18.30 - 19.30

Lychnpit

Community Hall



Contact Vicky on 01256 910108 or email vicky@infiniteharmony.co.uk
Don't forget to book your space.



For more information visit www.infiniteharmony.co.uk

Tree Surgeon

01256 763859

07766 256788

TreeSceneArb@gmail.com



TREE SCENE

ARBORICULTURE

Adrian Stanley

BSc(Hon) AA Tech Cert

Qualified & experienced
arborist

- All aspects of tree work & stump grinding
- Fully insured (£5m) - free estimates
- Logs supplied

**To advertise here contact
advertising@basinga.org.uk**

**To advertise here contact
advertising@basinga.org.uk**

Crusade

CLEANING SERVICES



Based in Old Basing, our services include:

Domestic and commercial
Window cleaning
Conservatory roof cleaning
Gutter and down pipe clearance
Soffit, fascias and gutter cleaning
Pressure washing

Contact us for a free quotation

01256 766899

www.crusadecleaning.co.uk