

August 2020

# BASINGA



Hannah Green



Old Basing and Lychpit Parish Magazine  
[www.basinga.org.uk](http://www.basinga.org.uk)

Proud to be supporting businesses and organisations in the Basingstoke and surrounding areas for 27 years



Your local one-stop provider of professional marketing & design support and graphic communication materials.



ISO12647



Call 01256 880770 [www.greenhousegraphics.co.uk](http://www.greenhousegraphics.co.uk)

**greenhouse**  
Marketing | Design | Production



**Shops**

**Funds raised in our shops support the hospital and its activities.**

**Old Basing - 42 Belle Vue Road**

**Hartley Wintney - Millbank House, High Street**

**Odiham - 71 High Street**

## Odiham & Old Basing Health Centres

Proud to Serve our Community – New Patients  
Welcome, Register Today!



**Doctors Assadourian, Andrews, Pizzotti, Williams, Pickup, Edmonds, Harris & Hutchings**

Our teams of healthcare professionals offer a full range of NHS & private services as well as holistic therapies for you & your family in 2 purpose-built surgeries, located in Odiham & Old Basing. Our catchment area stretches from Lychpit to Hartley Wintney & Hemard. If you have just moved to the area or are considering changing your GP surgery, take a look at our website to see what we can do for you.



Visit us @ [www.odihamhealthcentre.co.uk](http://www.odihamhealthcentre.co.uk)



Call us on 01256 702371 (Odiham) or 01256 868370 (Old Basing)



**Martin Cole**  
Plumbing Limited



- Heating Systems • Boiler Replacements •
- Cylinder Replacements • Un-vented Systems •
- Radiators • Pumps, Motorized Valves • Showers •
- Thermostatic Radiator Valves • Water Softeners •
- Bathroom, Ensuite • Cloakroom (complete installations) •
- Household Plumbing Repairs • Taps •
- Ballvalves • Washers • etc. •



**Tel: 01256 352419**  
Local Plumber

[mccole@btinternet.com](mailto:mccole@btinternet.com)

## AUGUST NOTES AND NEWS

This month's cover photograph, taken by **Hannah Green**, is called '**To the Beach**', and most appropriate as lockdown eases and there seems to be a mad rush to the coast every time the sun comes out. See page 13 for more detail. Scarecrow photos by Hannah are included throughout this issue.

Temporary changes have been made to the Old Basing area delivery method this month. If you live just over the Parish boundary you may have received a surprised copy of the magazine and we hope you enjoyed the read. This was not an error, you are in 'our' postcode, you need not contact us and hopefully our delivery will be back to normal for the September issue.

## CONTRIBUTIONS TO THE BASINGA

We welcome both regular and occasional items for the Basinga. The very last date for copy to the Editor for the **September** edition is **6.00pm on Monday, 10th August**. Please use the forms on the **Basinga** website: **[www.basinga.org.uk](http://www.basinga.org.uk)** to get your dates, articles and letters to us (see box on page 15 for further instructions). All advertising enquiries – classified, free adverts or inserts ( flyers) can also be made via the website. Don't forget that we only accept articles with about a 300 word maximum.

## PHOTOS AND LOGOS FOR THE BASINGA

If any reader would like to offer a **photograph of the village environment** we would be happy to receive them, either for immediate use or to build up a portfolio of 'village views' that we can use when appropriate.

We now have a web form that you can use to send a photograph for the website archive and possible use in the magazine, you simply go to **[www.basinga.org.uk](http://www.basinga.org.uk)** and the form can be found on the '**Contributors Submission**' drop-down menu.

Should you wish to submit multiple or a series of photos they can be emailed but please read the instructions on the photo form for details. This feature should **NOT** be used for Free Ads or Article photos, which can be attached to their own forms.

We continue to make changes to the presentation of the Basinga and we welcome **club** and **society logos**, with the option to use them within articles. Please send graphics to **[editor@basinga.org.uk](mailto:editor@basinga.org.uk)**

## SITUATIONS VACANT – HELP NEEDED

### Webmaster

Our **Webmaster** will shortly be stepping down from **Basinga Extra**, leaving a vacancy for a capable IT person to manage the Basinga Website and photograph archive.

We need someone with general IT skills and in particular, experience with **Wordpress**, which is the application we use to support our website. If you think that this might be you, please get in touch with the editor: **[editor@basinga.org.uk](mailto:editor@basinga.org.uk)**

### Advertising Manager

After 30 years involvement in various roles with the Basinga, our current **Advertising Manager** is retiring; we are therefore looking for a replacement. The role covers the

administration of advertisers enquires (not selling) through to ordering and liaison with other members of the production team who place the advertisements into the magazine and website. The candidate should be familiar with the use of MS Word and Excel for record keeping. Full handover training will be given.

If you're interested or would like further information contact [advertising@basinga.org.uk](mailto:advertising@basinga.org.uk)

**Basinga Team**

## **ODIHAM COTTAGE HOSPITAL CHARITY SHOP**



The Old Basing shop can be found in the parade along Belle Vue Road. We re-opened the shop on Wednesday, July 1st and welcomed many happy customers. The shop has been very busy since then. There are safety measures in place for both staff and customers. With less merchandise on display, customers have

more room to move around the shop. Hand sanitiser station on entry and distance markers help everyone feel safe. Our new opening times are Wednesday to Saturday, 10.00am to 4.00pm. We will only accept donations on a Saturday morning and reserve the right to decline contributions if our storage space becomes full. This is a temporary change until circumstances allow us to revert to our normal opening hours. We are looking forward to seeing many more of our friends and shoppers in the coming weeks and we thank you all for your continued support.

**Sue Cameron and her volunteers.**

## **SWEET PUMPKIN MARMALADE CHUTNEY**

A sweet/savoury pickle to complement cold meat and cheese

### **Ingredients:**

600ml (1pt) Malt vinegar	225g (8oz) ready to eat dried apricots quartered
450g (1lb) Pumpkin peeled, seeds removed and cut into pieces	
Rind and juice of 1 orange	10ml (2 tsp) coriander seeds
4 cardamom pods	1 large onion, finely sliced
5ml (1 tsp) cayenne pepper	2.5cm (1") fresh root ginger grated
450g (1lb) soft brown sugar	

### **Method:**

Place all the ingredients except the sugar in a large pan and simmer for 20 minutes until the pumpkin softens.

Add the sugar and simmer uncovered for about one hour stirring occasionally until the chutney has a thick pulpy constituency.



Spoon into warm sterilised jars, seal label and store for up to one month.

**Linda Frawley**



DO YOU HAVE A WILL IN PLACE?



CLARKE  
& SON  
SOLICITORS

A Will is quite possibly one of the most important documents you will ever sign.

Call now to book a free Will healthcheck or to start the process of making your Will.

Clarke & Son Solicitors LLP

Manor House 8 Winchester Road Basingstoke Hampshire RG21 8UG

T: 01256 320555

[www.clarkeandson.co.uk](http://www.clarkeandson.co.uk)

**M MARTIN**  
**MATTHEWSON**

Call Us:  
**01256 364753**

**ALL MAKES SERVICING & REPAIRS**  
**THE VOLVO & NISSAN SPECIALISTS**



**MOT TEST  
CENTRE**



Visit: [www.garagebasingstoke.co.uk](http://www.garagebasingstoke.co.uk)

**FREE Local Collection & Delivery** T&C's Apply



Unit 1 Pensell Farm, Farleigh Road, Cliddesden, Basingstoke, Hants. RG25 9A

[www.basingtutors.com](http://www.basingtutors.com)

## Basing Tutors

- One-to-One Tuition
- Friendly, personal approach
- Professional tutors

Full diagnostic assessment  
with no further obligation

Initial consultation  
free of charge

Tel: **01256 470948**

Email: [admin@basingtutors.com](mailto:admin@basingtutors.com)

**Local  
Tutors  
For Local  
People**



# 20% OFF

**selected products**  
**offer exclusively for**  
**Basinga readers**

(With this advert. New orders only)

Visit Basingstoke's most recommended bathroom  
& kitchen supplier and installer... [Checkatrade.com](http://Checkatrade.com)

## A1 Bathrooms & Kitchens

- Fully employed fitters
- 24/7 Emergency callout
- Project managed installation
- Comprehensive insurance
- 4 year labour guarantee



[Checkatrade.com](http://Checkatrade.com)

Ask to speak to any of our customers!

**Your Dream, Our Creation**

[www.a1bathrooms.co.uk](http://www.a1bathrooms.co.uk)

SHOWROOM: Unit 3, Cartel Business Centre, Stroudley Road, Basingstoke RG24 8FW T: **01256 810460**

# OLD BASING BOILER SERVICES



Boiler Installations

Servicing and Repairs

Unvented/Vented Cylinders

Power Flushing  
of Heating Systems

Free Estimates

No Call Out Charge

Landlord Certificates

Fully Insured

01256819521 **Bill Martin** 07990514472

[www.oldbasingboilerservices.com](http://www.oldbasingboilerservices.com)

*Keeping you Gas Safe*



**CONTACT BASINGSTOKE  
01256 325575 ANYTIME**

**ARE YOU A WORKING WIFE?  
AND TIRED OF COPING WITH THE HOUSEWORK?**

**WE PROVIDE**

REGULAR/HOUSE MOVE/END OF TENANCY CLEANS  
IRONING, OVENS AND CARPET CLEANING  
OVER 25 YEARS IN BASINGSTOKE



RING US TODAY FOR A FREE BROCHURE

**01256 325575**



## CHEQUERS

Independent Estate Agents



**Thinking of Selling in Old Basing/  
Lychpit in 2020 or on the market  
without results\*?**

**Choose an agent one step ahead of the rest...**

**Call 01256 810018  
and we'll get you moving**

*successfully selling property for over 28 years....*

[www.chequersstateagents.co.uk](http://www.chequersstateagents.co.uk)

T 01256 810018 E [sales@chequersstateagents.co.uk](mailto:sales@chequersstateagents.co.uk)

\* If you have instructed another agent or a sole agency and/or sole selling rights basis, the terms of these instructions must be complied with to avoid a possible liability to pay fees to commission.

### RECREATION FACILITIES

As lock-down measures have eased, parish facilities have re-opened. The children's play areas at the recreation ground and Belle Vue re-opened on 4th July and the MUGA is now also open with a new overhead net fitted to prevent balls being kicked over the fence. Users are reminded that distancing measures should still be observed and numbers using the MUGA at any one time is limited to 10.

Automatic hand sanitisers have been installed in the Old Basing and Belle Vue play areas - hopefully, these will be used sensibly and not vandalised! It is, however, recommended that anyone using the play or adult exercise equipment should bring their own sanitiser and wipes or a cloth for use before and after using the equipment. If any facility looks busy, please move to something else or come back another time.

The public toilets are also open to facilitate the increase in use of the recreation ground and will be cleaned daily throughout the summer. Please observe distancing measures as far as possible in this area and use the hand-washing facilities and sanitiser available.

We have already seen an increase in use of the grounds during the fine weather in June and while most users observed the rules and enjoyed a picnic or get together with friends and family, others ignored all signs, allowing their dogs to run loose on the field and some users even held barbecues. Sports equipment has also been damaged - football goals padlocked and stored at the rear of the office were removed, broken and left strewn on the recreation ground and the cricket nets vandalised, resulting in many hundreds of pounds worth of damage.

Litter has more than doubled and despite bins being emptied more frequently and the weekly bin collection increased, it is disappointing to see the amount of litter just left lying around. Please help us keep the grounds tidy by using the bins provided or if they are full, take your litter home or find another bin.

### ALLOTMENTS

Allotment holders have recently reported produce and other items being stolen so if you are visiting your allotment be aware of what is happening on neighbouring plots. There have been a number of new plot holders in the last few months so you may not always recognise your neighbour which has made it even more difficult to monitor any activity but if you do have concerns, please let the Parish Council know.



### PARISH COUNCIL MEETINGS

The next two meetings are **Tuesday, 4th August** and **1st September** at **7.30pm**. These continue to be held remotely but anyone wishing to "attend" is welcome. Agendas are published on our website and notice boards in the usual way with full details of how to "attend".

Parish Clerk: **Mrs Sandra Tuck** Assistant Clerk: **Mrs Kate Hope**

Address: **The Pavilion, Recreation Ground, The Street, Old Basing, RG24 7DA.**

Telephone: **01256 462847** Office Hours: **Monday to Thursday, 10.00am to noon**

Mobile: **07507 514498 (emergencies only)**

Email: **clerk@oldbasing.gov.uk.**

Website: **www.oldbasing.gov.uk**

## R.T. MITCHELL & SONS BUILDING CONTRACTORS

*Est. in Old Basing 1972*

HOUSES

EXTENSIONS

GARAGES

LOFT CONVERSIONS

ALTERATIONS

RESTORATION OF LISTED BUILDINGS

Tel: 01256 352225

[www.rtmitchellandsons.co.uk](http://www.rtmitchellandsons.co.uk)



## The Water Softener Specialists



- Manufacturing water softeners for over 30 years
- Latest non-electric block salt water softeners
- New installations & repairs
- Advanced technology water filters for pure drinking water
- No call-out charge
- Based in Hook

*Fitted, fully reconditioned water softeners from just £395 (includes warranty).*

**Tel: 01256 768171**

**Mobile: 07836 247694**

**[www.amsmayfair.co.uk](http://www.amsmayfair.co.uk)**



## MIKE'S GARDEN SERVICES

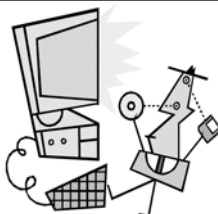
- General garden maintenance
- Landscaping and planting
- Garden clearances • Tree / hedge work
- Fence & shed work / treatments
- Lawn mowing • Turf laying
- No job too small • Fully insured
- Logs, Kindling and De-icer deliveries
- Free estimates • Competitive rates

**Tel: 01256 325015**

[mnm.chapman@talktalk.net](mailto:mnm.chapman@talktalk.net)

**[www.gardenerbasingstoke.com](http://www.gardenerbasingstoke.com)**

AFFORDABLE CARE & SUPPORT  
FOR ALL YOUR GARDEN NEEDS



## PC-fix-IT

Tel: 01256 474997  
or 07909 681606  
[www.pcfixit.co.uk](http://www.pcfixit.co.uk)

Repairs, Upgrades, Virus removal,  
Broadband, Internet, Wireless, etc.

*Reliable, experienced service.*



INTERIOR

EXTERIOR

## Painter's Pride



**EXPERIENCED HOUSEHOLD  
PAINTER & DECORATOR**

NO JOB TOO SMALL

**TEL: 01256 355356 or 07876 495657**



# World-Class Podiatry, Locally

## WHY see us?

We train to be the best we can be, so that we reach our potential and help you reach yours

## HOW do we do this?

By investing in world-class, cutting edge equipment and the latest evidence-based training for our TEAM

## WHAT does this mean for you?

Pro-active, forward-thinking and effective treatment in a welcoming and friendly environment

We combine our expert skills, our passion for seeing people at their best and our World-Class facilities and equipment to deliver excellence in Podiatric care

- Foot and leg pain
- Running injuries
- Hard Skin
- In-growing toenail management
- Video Gait Analysis using Optogait Technology
- Swift Verruca Treatment
- Shockwave Therapy for tendon injuries



To book an appointment to see a Podiatrist  
Call 0800 999 7337

OR visit  
[www.eclipsefootclinic.co.uk](http://www.eclipsefootclinic.co.uk)  
to book online

Visit us at Lychpit Surgery



Mention the code  
**BASINGA2** when  
booking your first  
appointment to  
receive a free gift!

## Transforming homes in Old Basing since 1996

Quote  
'BASINGA'  
for a preferential  
quote.



- ✓ Windows & Doors
- ✓ Conservatories & Orangeries
- ✓ Garage Doors
- ✓ Guaranteed Work
- ✓ Great Prices



Call 01256 841522

[riptonwindows.co.uk](http://riptonwindows.co.uk)

## LOCAL SHOPPING INFORMATION

Support our local shops, The latest information has been obtained directly or via the shop websites. If you find the details below are incorrect then please let us know at using the e-mail: [advertising@basinga.org.uk](mailto:advertising@basinga.org.uk)

### OLIVER'S

**The Delivery Service has now been suspended** to allow the Restaurant to reopen and the Take-away Service to continue with the reduced number of staff available. Opening hours are **Wednesday to Saturday, noon to 8.00pm**. For **Take-aways** see instruction at **"Queue Here" window** on arrival. Visit: [www.olivers4fish.co.uk](http://www.olivers4fish.co.uk) for their menu.

### OLD BASING CONVENIENCE STORE

For the period of the emergency the **Old Basing Convenience Store** are providing a home delivery service of essential goods to vulnerable residents in isolation in the Old Basing area. Minimum spend of £10. **Deliveries** (no additional charge) take place **Wednesdays, Fridays and Sundays. Telephone orders to Raj on 01256 464020** who will advise payment and arrangements for delivery. Contact can also be made via their Facebook page. Shop open **Monday to Saturday 7.30am to 5.30pm; Sunday, 8.00am to 4.30pm**.

### THE BOLTON ARMS

**The Bolton Arms** plan to have reopened from the 9th July, pre booking only. See their website [www.thebolton.com](http://www.thebolton.com) for full details.

They will continue to deliver from their suppliers a wide range of products, from raw ingredients to toiletries and drinks (even alcohol !), plus their own menu of home-cooked foods. Open **Monday to Saturday 5.00pm to 8.00pm; Sunday, noon to 3.30pm**. Please contact them with your requirements on [chef@thebolton.com](mailto:chef@thebolton.com) or **01256 819457** or **819555** (both have answer-phones). Deliveries to vulnerable residents normally within 24 hours.

### THE CROWN

**The Crown** is now open for normal business **Monday to Thursday, noon to 10.00pm. Friday and Saturday 9.00am to midnight. Sunday from 9.00am to 8.00pm**. Telephone: **01256 321424**.

### CROMWELL INDIAN CUISINE

**Cromwell Indian Cuisine**, Lychpit, is open for orders **5.30 to 10.00pm, except Mondays** when closed. Delivery available. Telephone. **01256 476828**.

### BASING CHINESE TAKEAWAY

**Basing Chinese Takeaway** is open **Monday to Saturday, from 5.00pm to 9.00pm**. Telephone: **01256 841818**.

### CO-OP

**Co-op** open daily **from 9.00am to 8.00pm**, and also from **8.00am to 9.00am for elderly residents**. Telephone. **01256 362845**.

### TESCO EXPRESS

**Tesco Express**, Lychpit, is open from **7.00am to 11.00pm**. Telephone: **0345 0269191**

### DAY LEWIS PHARMACY

Pharmacy open **Monday to Friday 9.00am to 6.00pm** Telephone: **01256 477267**.

# The Barn Animal Hospital

The only Small Animal Hospital in the Basingstoke area.

Our friendly caring team welcomes new clients and their pets to our purpose-built veterinary hospital with 24 hour on-site nursing care.

- Vaccinations
- Puppy parties
- Pet passports
- Neutering
- Microchipping
- In-house laboratory
- Ultrasound, ECG
- X-ray & dental X-ray
- Endoscope
- Veterinary ambulance



**The Barn**  
Animal Hospital

W: [www.barnvets.co.uk](http://www.barnvets.co.uk)

T: 01256 329 522 E: [reception@barnvets.co.uk](mailto:reception@barnvets.co.uk)

A: Paynes Meadow, Lychpit, Basingstoke, RG24 8AD

## CONSIDER IT DONE!



## PAINTING & DECORATING HOUSEHOLD MAINTENANCE

\*\*\* FULLY INSURED \*\*\*  
\*\*\* HIGHLY EXPERIENCED PROFESSIONAL \*\*\*  
\*\*\* DILIGENT & TRUSTWORTHY \*\*\*  
\*\*\* REFERENCES AVAILABLE \*\*\*

Call Graham: 07494 294246

Email: [consideritdone.hampshire@gmail.com](mailto:consideritdone.hampshire@gmail.com)

Facebook: [www.facebook.com/consideritdone80](http://www.facebook.com/consideritdone80)

# Lamberts Plumbing Services

PLUMBING & HEATING CONTRACTORS

**BOILER INSTALLATION & SERVICING**

**BATHROOM INSTALLATION & TILING**

**GAS SAFETY INSPECTIONS**

**ALL ASPECTS OF MAINTENANCE REPAIRS**

**NO JOB TOO BIG OR SMALL**

Railside, Station Road, Hook, Hampshire RG27 9HT

Tel: 01256 783597 • Mobile: 07501 559668

Email: lamberts\_plumbers@yahoo.com www.lambertsinhook.co.uk



- Window Cleaning - sills/frames/doors + text alert eve before + convenient online payment
- Professionally Qualified Carpet Cleaning
- Driveway Cleaning and Restoration
- Gutters/Fascias/Soffits Cleared and Cleaned
- Roof Moss Removal and Cleaning
- Patio and Decking Cleaning and Treatments
- Conservatory Valets
- Steam Cleaning
- Softwashing

**Local | Experienced | Insured | Reliable**

Contact now for your FREE quote:  
**01256 973144**

info@cawleycleaningservices.co.uk

www.cawleycleaningservices.co.uk



facebook@cawleycleaningservices

**Start every  
day with  
a healthy  
smile**



**Local, friendly,  
professional  
dental surgery**

- High quality general dentistry
- Cosmetic dentistry
- Orthodontics
- Teeth whitening
- Implants
- Facial aesthetics
- Early morning, late evening and Saturday morning appointments
- Children seen free on NHS
- Reduced rates for 18-22 year olds
- Denplan

**Call 01256 840141**

www.guineacourtdental.co.uk

21-22 Guinea Court, Chineham, Basingstoke RG24 8XJ



**Guinea Court  
Dental Surgery**



## OLD BASING AND LYCHPIT CARNIVAL

What can I say.....Old Basing and Lychpit you are absolutely amazing! The time, effort, imagination, and innovation that went into designing and placing your scarecrows was just staggering. I hope that you saw some of them in the Gazette and all 80 of them on Facebook, for those who use it, search for 'Old Basing Carnival'. A selection of scarecrow photographs are contained in this magazine, including this month's cover photo.

I cannot thank **Hannah Green** enough for coming up with the idea, taking all the pictures, posting them, and taking the time and effort to come up with the scarecrow trail. Thank you too, to Hannah and Sarah Adams for getting in touch with everyone, motivating others to get involved and for Sarah for designing the survey monkey, from which we received 83 responses.

The biggest thank you goes to the 80 of you that enabled this to happen, put smiles on people's faces, gave purpose to some peoples walks, brought colour to the villages and was quite a bit of fun.

The survey monkey results indicated that those who did scarecrows did so as they had time, as on furlough / off and / or kids were off school. Majority had heard about the event through Facebook, however interestingly just over half that responded had not put a scarecrow up. What was lovely to hear was that 70% said they are likely to do again next year and another 23% saying maybe – so fingers crossed we may have even more next year. What was overwhelming was that 80% indicated they would like it run the same as this year with no competitive element – so great to see some amazing community spirit. My favourite, the scarecrow trail map, with 75% saying they found the map really useful; well done Hannah.

The art competition did not receive as many entries however those we did received were brilliant. We received one entry in the under 5 section and three in for the 6 to 10 group. The committee have decided that we will award all the entrants the prize of a £10 art voucher. Well done and thank you for participating – Matteo, Emmy, Holly and Robin.

We look forward to seeing you for our postponed **50th Carnival on Saturday, 19th June 2021** where the theme will be “**50 Golden Years – anything goes**”. If you have any pictures from across those 50 years, please do share copies with us – we hope to have a display at the carnival next year.

So until then, thank you to all that have supported us over the years and for the amazing efforts so far, if you have any further feedback or ideas, please let us know via e-mail or through our Facebook page..

Take care and keep well wherever you are.

e-mail: **oldbasingcarnival@gmail.com**

Facebook: **Old Basing Carnival**

Telephone: **07733 833486** (please note new details)

**Joe Croombs**, Chair - Old Basing Carnival Committee

# Looking for independent financial advice you can trust?

We'll help you create, increase and protect your wealth. Our personal service is designed to build a shared understanding of your wealth objectives and to translate these ambitions into reality.

To find out more, please call

**01276 34932**

**S4financial**  
SUPPORTING YOUR FINANCIAL LIFE



 **01276 34932**

 **www.s4financial.co.uk**

- \* Family Wealth Preservation
- \* Wealth Management
- \* Tax Planning
- \* Protection Planning
- \* Retirement Planning
- \* Mortgages

The value of investment can fall as well as rise. You may not get back what you invest. Your home may be repossessed if you do not keep up payments on your mortgage. There is normally a fee for advising on and/or arranging a mortgage, the precise amount will depend on your circumstances but we estimate that it will be £495.

**R.LOVELOCK**  
HEATING & PLUMBING

ALL ASPECTS OF PLUMBING  
INCLUDING

- BOILER FITTING • SERVICING & REPAIRS
- GENERAL PLUMBING

TEL: 01256 421138  
MOB: 07383 064464  
EMAIL: [contact@rlovelockheating.co.uk](mailto:contact@rlovelockheating.co.uk)



*lsa*  
LOUISE SANDERS  
OSTEOPATHS

Free car park  
Emergency appointments  
Home visits  
Free advice on rehabilitation  
Free advice on exercises  
Free ergonomics advice

DO YOU SUFFER FROM.....

Back Pain, Sciatica,  
Headaches,  
Sports Injuries,  
Shoulder Problems  
Neck Pain, Joint Pain,  
Elbow & Wrist Problems,  
Muscular Strains

**PJH**  
Window Cleaning Services  
Local, reliable window cleaner  
For a free, no obligation quote for  
• Window cleaning • Facias  
• Gutters • Conservatory Roofs

Please call Pete on  
**07762 616600**  
e-mail: [pjhcleaning@gmail.com](mailto:pjhcleaning@gmail.com)

OLD BASING  
Old Basing Health Centre,  
Manor Lane  
Old Basing | Hampshire | RG24 7AE  
01256 868 370

## CLASSIFIED ADVERTISEMENTS



### **Piano Lessons**

All ages and abilities

Beginners welcome

Qualified and experienced teacher

Philippa Ford 01256 470174



### **BASINGA:**

We have vacant contract advertising space available for 2020, if you are interested contact the Advertising Manager on:  
advertising@basinga.org.uk

### **PROFESSIONAL FOOT CARE IN THE COMFORT OF YOUR OWN HOME**

Fay Curtis MCFHP MAFHP, fully qualified Foot Health Practitioner offers a range of foot services including:

Toenail cutting, Nail condition treatments, Corn removal, Callus reduction, Dry and cracked heel remedies, Verruca treatment and Diabetic foot care.

To book an appointment call

Fay on 07780 664410

*Affordable marketing support for small businesses*



- Marketing support and advice
- Graphic design - adverts, leaflets, posters
- Copywriting and content creation
- Website design

☎ 07810 565122  
✉ hello@loupcreative.com  
🌐 www.loupcreative.com



*Submissions to the magazine and website can be made via [www.basinga.org.uk](http://www.basinga.org.uk) using the web forms:*

*Selection for Articles/Letters and Diary Dates will be found on the "Submissions" drop down and for Free and Concession Ads on the "Advertise with us" drop down. Paid advertising enquiries can also be made in the same way.*

*Submissions made via the forms now provide a common input for both the magazine and website and are automatically routed to the member of the team responsible for processing them. All submission must be received by the 10th of the month (6th in December) previous to the magazine issue month.*

*If you have trouble finding the forms, you can of course contact us and we will advise.*

*Our privacy Policy is available to read on the website which includes the new GDPR requirements for publishing photographs.*

*Contacts for general enquiries and assistance:*

*advertising@basinga.org.uk or editor@basinga.org.uk or webtech@basinga.org.uk*

*All Advertisements in the magazine and website are inserted in good faith and the Basinga Management Committee accepts no responsibility for any statement, omission or errors made by the advertisers; nor endorses the products or services advertised. The views and opinions expressed in the Basinga are those of the organisations, individuals and authors concerned and not necessarily those of the Basinga Management Committee.*

# brain chase coles

Solicitors

Look no further for your  
local legal experts



[www.brainchasecoles.co.uk](http://www.brainchasecoles.co.uk)

Tel: 01256 354481 | [enquiries@brainchasecoles.co.uk](mailto:enquiries@brainchasecoles.co.uk)

Property · Wills & Probate · Family Law · Family Mediation · Notary Public

Haymarket House, 20-24 Wote Street, Basingstoke, Hampshire RG21 7NL



**R.KNIGHT**  
**JCB & PLANT HIRE**

**All Ground Work Undertaken**

**Fencing & Tree Work**

Tel: 01256 324588

Mobile: 07703 458372

Groundworks | Footings | Driveways | Landscaping

## **W.T.HILL** **Painter & Decorator**

Internal & External

Domestic & Commercial

Over 30 Years Experience

Tel: 07748808069/01256 467901

Free Quotations

## **GARDEN SOLUTIONS** **NEIL INKLEY**

SPECIALIST IN FENCING, TURFING,  
PATIOS ALSO GENERAL GARDEN WORK  
including Lawns, Hedges, Clearance,  
and Pressure Cleaning

**Local References      Free Estimates**

01256 882108 or 07768 105488



## FREE ADS – BUY AND SELL

**Note:** All ads are processed in received date order. Ads not included this month will be entered in next issue, space permitting. If you do not want your ad to appear later contact the Advertising Manager. Ads also appear on the web site with photographs if available.

### **SOFA BED**

**£130**

**07715161192**

Good condition, used no more than 6 times in 6 years. Sturdy but easy to pull out metal framed bed. Mattress as it came, clean. Some kitten scratches to leather arms and one cushion but nothing too awful. Still looks smart and ideal for occasional use. Made by Leather workshop, double size mattress. Size Mattress frame only when extended fully 188cm length 48.6cm width. Overall length when bed pulled out – Room space you would require to sleep on Inc sofa part 236cm length Sofa dimensions when using as sofa and bed folded into base 194cm width 106cm depth 86cm height.

### **FLYMO HOVER VAC 280**

**£50**

**07990602551**

VGC, tools and instructions.

## CONCESSION ADVERTS – WHAT'S ON

We should start to see some activities appearing next month

## ADVERTISERS NEWS

Most of our advertisers are now open for business, please support them.

## THE MILL FIELD CONSERVATION GROUP



### **What's around this month:**

Bird activity in the field during August will see the migrants moving back through the field with the departing house martins, swifts and swallows moving on southwards. Dragonfly numbers will be increasing due to the migrant species – look out for the southern hawker and brown hawker. The Butterfly numbers finally took off last month with the warm weather, those we have will still be keeping up good numbers throughout the month. Finally, for the plants, we had very good numbers of orchids this year in particular the more unusual Birds Nest Orchid. Other newer plants for the field currently flowering is the frothy yellow Lady's Bedstraw and Kidney Vetch in the top meadow and the frothy white Hedge Bedstraw in the central meadow, and finally look out for the large yellow daisy-like flowers of the fleabane – a magnet for butterflies in past years.

**Anne Francis**

Mobile: **07974 944439**

Email: **millfieldoldbasing@yahoo.co.uk**

Facebook: **Mill Field Conservation Group**

## BEST OF FLOORING

Laying down a good reputation

Suppliers & Installers of:

- Wood Flooring
- Laminate Flooring
- Underfloor Heating
- Carpets & Vinyls
- Amtico

Home Sample Service Available  
Free Estimates & Expert Advice

Unit 3 Cufaude Business Park,  
Cufaude Lane, Bramley, Basingstoke, Hampshire RG26 5DL

Showroom Open Friday 10am-4pm, Saturday 10am-1pm

Tel: 01256 810327

[www.bestofflooring.co.uk](http://www.bestofflooring.co.uk)

Email: [sales@bestofflooring.co.uk](mailto:sales@bestofflooring.co.uk)

**Checkatrade.com**



**OVENCLEAN**  
The original oven cleaning specialists

Non-Caustic Fresh Solution Used Every Time  
Ovens ~ Hobs ~ Extractors  
Microwaves ~ Aga's ~ Ranges Cleaned

FOR A FREE NO OBLIGATION  
QUOTE PLEASE CALL

**01276 473118 - 07882 886736**  
[www.ovenclean.com](http://www.ovenclean.com)



DESIGN & BUILD, PLANTING, DECKING, FENCING  
TURFING, PATIOS, DRIVEWAYS & MAINTENANCE  
FULLY INSURED & CRB CHECKED

CONTACT JONATHAN FOR A FREE QUOTATION

**01256 412723 - 0771 7214521**

E: [info@jcooklandscapes.co.uk](mailto:info@jcooklandscapes.co.uk)

[www.jcooklandscapes.co.uk](http://www.jcooklandscapes.co.uk)

# B&M FENCING

## GARDEN & LANDSCAPE SUPPLIES

- |                     |                      |                    |
|---------------------|----------------------|--------------------|
| • Panels (3' - 6')  | • Reclaimed Sleepers | • Sharp Sand       |
| • Trellis           | • Softwood Sleepers  | • Building Sand    |
| • Concrete Post     | • Oak Sleepers       | • Ballast          |
| • Closeboard Panels | • Decking            | • Scalpings        |
| • Natural Sandstone | • Rolawn Turf        | • 10mm Gravel      |
| • Paving Slabs      | • Topsoil            | • 20mm Gravel      |
| • Block Paving      | • Landscape Bark     | • Decorative Stone |

Delivery Service Available

Mon-Fri  
7.45 - 5pm  
Sat 9am - 5pm

**01256 762739**

Fencing  
Fitting Service  
Free Estimates

[www.bmfencing.co.uk](http://www.bmfencing.co.uk)

Reading Road, Hook, Hants, RG27 9DB

[enquires@bmfencing.co.uk](mailto:enquires@bmfencing.co.uk)

## CHINEHAM CENTRE SHOPS

Support our local shops, The latest information has been obtained directly or via the Chineham Shopping Centre website. If you find the details are incorrect please let us know via e-mail at [advertising@basinga.org.uk](mailto:advertising@basinga.org.uk)

### TESCO

Open **Monday to Saturday 8.00am to midnight; Sunday 10.00am to 4.00pm (Monday, Wednesday and Friday 9.00am to 10.00am prioritised for elderly and most vulnerable; Sunday 9.00am to 10.00am Sunday prioritised for NHS staff).** Only **80** customers allowed in store at one time. Telephone. **03456 779039.**

### ICELAND

Open **Monday to Saturday 9.00am to 6.00pm; Sunday 10.00am to 4.00pm.** Only **20** customers allowed in store at one time. Telephone. **01256 321723.**

### SUPERDRUG

Open **Monday to Saturday 9.00am to 5.00pm; Sunday 10.00am to 4.00pm.** Only **10** customers allowed in store at one time. Telephone: **01256 465200.**

### MARKS & SPENCER SIMPLY FOOD

Open **Monday to Saturday 8.00am to 9.00pm; Sunday 10.00am to 4.00pm. First hour Monday and Thursday for over 70s and vulnerable persons. First hour Tuesday and Friday for NHS staff.** Only **40** customers allowed in store at one time. For further information telephone: **01256 326429.**

### POUNDLAND

Open **Monday to Saturday, 8.00am to 5.00pm; Sunday 10.00am to 4.00pm.** Only **20** customers allowed in store at one time. Telephone: **01256 365192.**

### BOOTS

Open **Monday to Friday 9.00am to 8.00pm; Saturday 9.00am to 6.00pm; Sunday 10.00am to 4.00pm. Monday to Saturday the Pharmacy will be closed 1.00pm to 2.00pm.** Only **10** customers allowed in store at one time (**5 Pharmacy and 5 in Store**). Telephone: **01256 417414.**

### PETS CORNER

Open **Monday to Saturday 9.00am to 5.00pm; Sunday 10.00am to 4.00pm.** Carry-to-car and home-delivery available within a 10-mile radius. Only **2** customers allowed in store at one time. Telephone: **01256 361963.**

### DOMINOS

Open **daily 10.00am to midnight for telephone orders for delivery only.** Their telephone number is - **01256 810030.**

### CHINEHAM OPTICIANS

Open **Monday to Saturday 9.00am to 5.00pm.** Telephone: **07725264305**



# ST NICHOLAS' SCHOOL

FLEET - HAMPSHIRE

An independent day school for boys aged 3-7 and girls aged 3-16

- Small class sizes
- Inspirational teachers
- A caring, family ethos
- Purpose-built facilities
- Outstanding results
- "Excellent" ISI Inspection
- School buses run from Alton, Bentley, Basingstoke, Bramley, Chineham, Hook, Old Basing, Odiham, Hartley Wintney, Fleet, Farnham, Rowledge, Yateley, Camberley, Farnborough and Aldershot

## Open Evening

Wednesday 6th May 2020  
4.30pm – 7.30pm

## Year 3 & Reception Taster Day

Friday 1st May 2020  
8.45am – 3.30pm

## Senior Taster Day (Year 7 2021)

Thursday 14th May 2020  
8.45am – 3.30pm



T: 01252 850123 | E: registrar@st-nicholas.hants.sch.uk

f @stnicholasschool | @stnicholasfleet

st-nicholas.hants.sch.uk

# Looking for a Letting Service from an Agent who cares? You'll find us on The Street



all  
**aspects**  
LETTING  
SERVICES

**20% Discount with this advert**

**T: 01256 470411**

69A The Street, Old Basing RG24 7BY  
info@allaspectsettingservices.co.uk

Zoopla



PROPERTY MANAGEMENT • RELOCATION CONSULTANTS • INVENTORY SERVICES



## OLD BASING WI



By now, all our WI Members should have received a small “gift” through their letterbox from the WI Committee, to let them know that we are all thinking of them. Thank you to our President for arranging this. Please let us know if you have not received yours. Your Committee has been meeting regularly, outside in the garden, to review the current situation

and to plan future activities. **We are very much hoping to re-start our monthly meetings from 6th October.** This will depend on the Parish Rooms being open and what current restrictions are in place at the time. This meeting would be a Members only meeting and we would plan to hold our AGM which was delayed from May.

Members may be interested to learn that Denman College is offering on-line courses in craft, history, general interest and cookery with a starting price of just £5 for a 2 hour demonstration/tuition. If you have any suggestions for future activities for Craft Group, then please do get in touch with Chris Hall.

I continue to send out our Monthly newsletters, so please check your in-box if you haven't seen them. If you have changed your email address since lock-down, then please let me know and we can amend our records accordingly.

We are pleased to have been asked to submit some seasonal recipes to the Basinga on a monthly basis, so do look out for them (p4). Thanks to all who have sent me some so far.

Details of how the WI in Hampshire is dealing with the current situation can be found at **[www.hampshirewi.org.uk](http://www.hampshirewi.org.uk)** . I will contact Members when we are able to re-start and, at that time, we will be able to welcome any new Members who wish to join us.

## NATIONAL WOMEN'S REGISTER

Have your children just left home? Have you moved to a new area? Have you experienced some other big life change? Come and meet other women to share and explore thoughts, ideas and experiences. Enjoy lively, stimulating conversation, broaden your horizons and make new friends. There are 380 groups in the UK and we currently have around 6,500 members. National Women's Register (NWR) is run nationally by a small and agile team so quickly embraced social media during lock-down to keep our minds active, including a subscription to Digital Theatre Plus, National Quizzes, as well as access to many live and interesting speakers, all included in our modest annual £25 subscription fee.

Each local Group is democratic with everyone involved in planning and organising activities. During lock-down members have remained in touch via phone, WhatsApp, emails and Zoom. None of our Group had heard of Zoom before March but every Monday at 2.00pm we have had a Zoom meeting when between 6 and 15 of us get together for exercise sessions, quizzes, a discussion topic and generally keeping up with news. On 6th July our theme was “Growing old gracefully. Who will look after us? What would we say to our 16 year old self?” We all agreed that our health is most important; we should live life to the full while we are able; and we would tell our 16 year old self to be more confident.

We are looking forward to meeting physically in the near future, including my favourite meeting of the year – wine tasting. Not a member? NWR could be for you! Do have a look at **[www.nwr.org.uk](http://www.nwr.org.uk)**, or contact Karen who is our Local Organiser for the coming year: **[karen.dann@gmail.com](mailto:karen.dann@gmail.com)** or call her for a chat: **01256 328488**.

**Sandie Tapping**

Dear Friends,

If all people are made in the image of God the Creator, then human creativity is a very God-like characteristic.

It may well be that Lock-down has given fresh opportunity and impetus towards your own explorations in creativity.

You may identify with some of the creative activities in which my wife and I have been engaged during this time-including-reading, watching DVDs and Television, playing games, working at jigsaws, participating in quizzes, making time for prayerful reflection, preparing worship, exercising, gardening, listening to music, playing music, composing, telephone conversations, Spring Cleaning, writing.

You will have other areas to add to those.

I've put two of those activities together - the Spring Cleaning and writing - in this poem written recently and called "Sorting".

I hope it will have something to say to you.

With love,

*Reverend David Jenkins*

## SORTING

There's a pleasure and a pain  
In sorting matters out:  
The pleasure that is gain  
The pain that speaks of doubt.  
The things we throw away  
Were needed at some stage  
But maybe that was not  
For now and at this age.  
It may come as a shock  
To see how much we've lost,  
But hoarding things we like  
May come at quite a cost.  
If we don't do the sorting,  
It falls to those we love;  
So throw the stuff away now  
That's stayed in lofts above.  
And while we may be at it  
With all this sorting racket

It is not only stuff and things  
Which clutter up the attic;  
There's attitudes need changing,  
There's prejudice to face,  
There's immature reactions  
Concern at loss of face,  
There's petty irritations  
And major faults as well  
Inactive "good intentions  
That pave the way to hell."  
There's plenty yet to put right  
There's plenty left to sort-  
The stuff that blocks the daylight  
The things that spoil our thought;  
So downsize now with relish  
And let it be a pleasure  
And then make sure you cherish  
The really lasting treasure.

### CHURCH OPEN FOR PRIVATE PRAYER:

**SUNDAY (2.00pm - 4.00pm) and THURSDAY (10.00am to 1.00pm)**

All are welcome to come along to St Mary's which is now open for private prayer on a Sunday afternoon and Thursday morning. Please be aware that numbers inside the church will be limited, and that at busy times you may need to queue. Please use the hand sanitiser on entering and leaving the church, and observe social distancing when in the church. For now the toilets will remain closed.

Following on from the Government's announcement that Public Worship can resume, we are currently in the process of reviewing measures at St Mary's in order to allow us to open the church safely for public services. We hope to be able to offer some services in August. Please check the church noticeboards and St Mary's Facebook page for further updates (St Mary's Old Basing and Lychpit).

### ONLINE SERVICES

We are continuing to live-stream some services via our Facebook page (St Mary's Old Basing and Lychpit), with all welcome to join these services.

**Morning Prayer:** 9.15am Monday to Friday

**Sunday Worship:** 9.30am The service sheet available on St Mary's website: [www.stmarysoldbasing.org.uk](http://www.stmarysoldbasing.org.uk)



If you have a prayer request then please give **Rev'd Heather** a call or send a text message to **07745731729**, or via email: [vicar@stmarysoldbasing.org.uk](mailto:vicar@stmarysoldbasing.org.uk)

If you'd like to be added to our distribution list for **Rev'd Heather's weekly message** please email our **Administrator, Debbie Filer**: [admin@stmarysoldbasing.org.uk](mailto:admin@stmarysoldbasing.org.uk).

### SUPPORT DURING THE CORONAVIRUS OUTBREAK

St Mary's is a local hub working with **Basingstoke Voluntary Action** and **Basingstoke Council** for those needing support at this time, whether that be in terms of practical help such as shopping and the collection of prescriptions or if you are feeling isolated and would welcome a friendly phone call. Please contact **Rev'd Heather** directly by text or phone on: **07745 731729** or email [basinghub@gmail.com](mailto:basinghub@gmail.com)

### BASINGSTOKE FOODBANK - DONATION REQUEST

The Foodbank is facing a high level of demand and would appreciate any support that you can give in terms of donations. St Mary's continues to be a collection point for the Foodbank. Please leave items in the crate on the Vicarage porch (the Vicarage is located on the corner of Church Lane & Milking-pen Lane). There is also a collection box in Tesco at Chineham. For a list of items that are in particular short supply please visit the website at: [www.basingstoke.foodbank.org.uk](http://www.basingstoke.foodbank.org.uk)

**Thank you.**

## CHURCHYARD CONSERVATION GROUP (PIOCC)

**All Working Parties** are still **CANCELLED** until further notice, due to Coronavirus. They will not resume until the church and its facilities are fully open. We look forward to once again being able to welcome our volunteers as life returns eventually to more normal conditions. Initially the Working Parties are likely to be shorter without refreshments and we will ask all participants to self-distance. Meanwhile we hope you and your families remain healthy. Thank you for your support.

Last month started with a wonderful display of Oxeye Daisies, followed by a wonderful blue swathe of Meadow Cranesbill, the start of the summer flowers. Now the tall grasses create a wonderful habitat for roosting butterflies and other insects. Soon the Swifts that screamed as they flew over the churchyard last month will depart for Africa leaving the churchyard strangely quiet, but there is still plenty to see. We have tried to keep the central path safe, please take care as you wander around. We hope you will enjoy watching the birds, butterflies and flowers here and also in your gardens or from your windows. Take care and keep well.

For further information please ring **Fay Farrant** on **01256 476863**.

**Margaret Carr**  
[www.stmarysoldbasing.org.uk](http://www.stmarysoldbasing.org.uk)

## VILLAGE CAFE

It's hard to believe we are over half way through the year and 2020 has proved to be a very challenging one for everyone. No one could have predicted how our lives would change overnight but we are slowly heading towards a new normal.

It's been many months since the Village Cafe has opened it's doors on a Friday afternoon to welcome our lovely customers and in reality, it maybe some time yet before we are able to do so. We had hoped to be able to offer a take away service but at the present time, this is proving difficult and we have to ensure the safety of all of our volunteers and customers. We will obviously keep this option under review and take all safety guidelines into consideration should we be able to offer this service in future.

Our volunteers would love to be able to open the cafe with a fabulous afternoon event to welcome you all back but all we can do at the moment is to abide by Government restrictions and see how things progress.

We will keep you up to date regarding when we can either reopen or offer some kind of take away service via our Facebook page and Basinga articles.

We all appreciate that it has been a difficult time for many but we hope that you are all staying sane, safe and well. Let's hope that it's not too long before we can all meet again and enjoy a relaxing afternoon amongst friends.

**Deborah Thorne**



# Berryford

Accountancy Services

## Do you need an accountant?

We offer an accountancy service for small businesses and individuals

Year End Accounts  
Bookkeeping  
VAT and Tax  
Personal Tax Returns

01256 472832 07790 948310

mike@berryford.co.uk

www.berryford.co.uk

## A. SEWELL

www.asewell.co.uk



### Lighting, Electrical & Audio Visual

All Lighting and Electrical work undertaken including:

- Security & Emergency Lighting
- Interior & Exterior Lighting Design & Installation
- TV, Telephone and Data Distribution
- Multi-room Audio/Visual
- Alarm Systems, CCTV & Door Access Systems
- Electrical Alterations & Re-wires



01256 329893

01252 844663



## Home Maintenance Services

Family Business • Fully Insured • Free Quotations

References by Request • 25 Years' Experience

### Jobs Undertaken

Fencing • Drylining/Studwalls • Painting/Decorating  
Laminate Flooring • 2nd Fix Carpentry • Plumbing • Tiling  
Fitting/Designing of Kitchens and Bathrooms

## Marcus Underdown

Property Maintenance Expert

01256 479327 • 07878 078135

mtunderdown@virginmedia.com

"We do anything from changing a tap to refurbishing your bathroom"

## OLD BASING VILLAGE HALL

*Whatever your function needs  
your  
Village Hall can meet them.*

Contact: Sandie Rice

Tel: 07544 289932

Email: bookings@oldbasingvillagehall.co.uk



## A-Foardable Domestics

WE REPAIR....

Washing Machines, Cookers, Dishwashers, Fridge Freezers,  
Ovens, Vacuum Cleaners & Tumble Dryers.

Repairing  
Since 1995

Low  
Pricing

Family  
Run

Qualified  
Engineers

Basingstoke  
Based

Call: 07891 465499 | Email: afdomestics@engineer.com  
Web: www.afdomestics.com

We're delighted to let you know that most of our libraries reopened at the start of the week (Monday 6 July). We're looking forward to welcoming you back. Our priority is to keep you and our staff safe and we've been working hard to put necessary safety measures in place.

You'll find details of our temporary opening hours, changes to our services, and details on how to safely visit us, on the Hampshire Libraries website. You may need to queue outside branches (following safe social distancing guidelines) as we'll have limits on the number of people who can go into our buildings at any one time. Hand sanitiser will be available, but please don't come to the library if you feel unwell. For regular updates from the Hampshire Library Service, subscribe to our monthly newsletter.

Here's a summary of the services we will be offering as we reopen:

### **READY READS: WE SELECT, YOU COLLECT**

Library staff will handpick a selection of books for customers who complete an online form or call **01962 454747**. These can be collected, along with any reserved items, without having to queue to come into the library.

### **SHORTER VISITS**

To reduce wait times and allow as many people as possible to visit our libraries, people are asked to limit their visits to a maximum of 30 minutes and to keep browsing to an absolute minimum. Newspapers and magazines won't be available for the time being.

### **LIBRARY SELF-SERVICE APP**

Customers are asked to use self-service machines to borrow items where possible or download the new Spydus Mobile app to check out books by your smartphone.

### **OVERDUE LOANS**

We are accepting returned library books, but our current opening hours are slightly different to normal and you may be asked to queue outside the library. If your local library has a book return slot you can use that at any time. All returned books are quarantined for 72 hours before they go back into circulation.

Please pay outstanding fines online or by using contactless kiosks inside the library.

### **SHARED COMPUTERS AND PLACES TO STUDY**

Computers are free of charge to use for all library card holders; to secure a session you must book in advance by calling **01962 454747**. Find out more about accessing computers in the library here.

Study places will be available from 13 July; to secure a session you must book in advance by calling **01962 454747**.

### **EVENTS AT THE LIBRARY**

Events, activities and groups won't be able to meet in libraries yet, but you can access a full online timetable of events and activities including baby rhymetime, story time, bedtime stories, the Summer Reading Challenge and podcasts continue through our website and on Facebook.

### **MORE INFORMATION**

Full details of what to expect when next visiting a Hampshire library, as well as information on digital resources and online activities are available at [www.hants.gov.uk/library](http://www.hants.gov.uk/library). If you have any questions, get in touch by emailing [county.library.HQ@hants.gov.uk](mailto:county.library.HQ@hants.gov.uk).



**Lisa Ives** M.Ost PgCACE MSCCO  
GOsC Registered Osteopath  
**01256 316566**  
**07814 365523**

Back & Neck Pain/Ache  
Sporting Injuries  
Muscular Strains & Ligament Sprains  
Muscle Tension  
Sciatica  
Spasms  
Neuralgia & Fibromyalgia  
All Joint Pains  
Arthritic & Rheumatic Pain  
Structural & Cranial Osteopathy  
Ultrasound & Dry Needling

### Lisa Ives Osteopathy®

Grove House, Lutyens Close, Chineham Court,  
Basingstoke, HAMPSHIRE, RG24 8AG.

[www.lisaivesosteopathy.co.uk](http://www.lisaivesosteopathy.co.uk)  
[enquiries@lisaivesosteopathy.co.uk](mailto:enquiries@lisaivesosteopathy.co.uk)



**HeatOn**  
Gas & Heating Services™

**Installation, Service, Repairs**  
**Your local Gas & Heating Specialists**

- Boiler & Heating Breakdowns
- Smart Control Upgrades
- Heating & Boiler Installations
- Servicing

Even the small jobs:  
Repacing a Radiator, Thermostat  
or just fixing a leak.

Telephone 07925 665636  
[customer.services@heatonghs.co.uk](mailto:customer.services@heatonghs.co.uk)  
[www.heatonghs.co.uk](http://www.heatonghs.co.uk)



**Checkatrade.com**  
Where reputation matters



## BASING HOUSE RUINS AND GROUNDS

Plus museum, garden, activity trail, workshops,  
outdoor theatre, special events and more!



### THINGS TO DO

- Discover the Great Barn and spot the artillery damage still visible on its walls
- Explore the ruins and imagine what the house would have looked like
- Visit the walled garden and learn about Basing House's fascinating history in the museum
- Walk your dog or find a picnic spot

### INFORMATION

Pay once, visit all year! With your ticket, you can enjoy unlimited visits to Basing House and return as many times as you like for a whole year! See our website for full details, admission prices and opening times.

Starting to reopen in stages from  
July. See website for details.

**BASING HOUSE** | Barton's Lane | Basingstoke | Hampshire RG24 8AE  
Please call 01256 639550 or email [basing.house@hampshireculturaltrust.org.uk](mailto:basing.house@hampshireculturaltrust.org.uk)



[www.hampshireculture.org.uk/basing-house](http://www.hampshireculture.org.uk/basing-house)  
Hampshire Cultural Trust is a registered charity (no. 1156533) and company (no. 29166225) in England and Wales.

## BASING HOUSE

Basing House reopened on Saturday 4th July, and is now open, Wednesday to Sunday, until the late autumn. Full details of the arrangements in force can be found on the website at: [www.hampshireculture.org.uk/basing-house](http://www.hampshireculture.org.uk/basing-house)

To help keep everyone safe, we've made some changes which are in line with government guidelines to help manage our visitor numbers and ensure we maintain social distancing to protect you, our staff and volunteers.

We will be: **Giving you a warm welcome at a safe distance; Using signage to help you maintain social distance; Asking for cashless payment wherever possible; Providing hand sanitiser for you to use; Taking away high-contact exhibits and displays.**

**Do remember we are an almost wholly open-air site.**

We have introduced **advanced booking** to Basing House to help us manage our visitor numbers. You need to purchase an admission ticket and book a visiting time. Booking your visiting time is free. If you already have an admission ticket, you do not need to pay again, but you do need to book a time to visit. **Timed visits** to Basing House are available **all day, Wednesday to Sunday from 11.00am to 4.00pm**. Please book a visiting time for each member of your party, including children and carers. Do remember that if you are coming by car you have to factor in the time it takes to walk the 500-odd metres from the car park – by Barton's Mill to the visitor centre.

Full details of planned events are at: [www.hampshireculture.org.uk/events?venue=6](http://www.hampshireculture.org.uk/events?venue=6). This include **pop up cinema** which is scheduled for **12th to 15th August** with film titles and tickets details going live the week commencing 13th July! We also have a **Summer Fayre** – a little brother for our popular Christmas Fayre on **30th and 31st August**.

**Andrew Howard**

## LINGUATASTIC LANGUAGE ACADEMY

By the time you read this, our main children and adult groups will be taking a break for the summer. It was certainly a different end to the academic year. Usually, we would have enjoyed picnics and special trips with the children with affectionate goodbye hugs, but instead, we ended the term with a load of on-line sports day sessions (in the target languages, of course) and enthusiastic waving!

Realistically, it is unlikely that we are going to be able to run many (if any) of our usual face-to-face lessons next term, but if we can't, we'll try to continue to run as many classes on line as possible. If you'd like to find out more about children and/or adult classes, please e-mail: [info@linguatastic.com](mailto:info@linguatastic.com).

And everybody is encouraged to visit our YouTube channel (go to YouTube and search "Linguatastic") where we have uploaded songs, stories and short lessons in French, German and Spanish, aimed at children (but which adults could probably learn from too!).

We'd like to take this opportunity to wish all those, but especially those who were studying with us, and receiving their exam results this month, all the very best. For some of you, it may have been a relief not to sit the end of course exams, for others there will be some feelings of regret. Either way, it will probably still be a somewhat surreal feeling actually getting your grades and we want you to know that we are thinking of you.

Take care everybody!



# P.R. BRICKELL

7 Bexmoor Way, Old Basing



**All aspects of  
carpentry work  
undertaken**



FOR FREE ESTIMATES & ADVICE ON  
KITCHEN FITTING, STAIR PARTS RE-  
PLACEMENT, NEW DOORS FITTED, RE-  
PAIRS TO ROTTEN TIMBER AND  
FRAMES, WARDROBE FITTING, AND  
GENERAL MAINTENANCE WORK,  
NO JOB TOO SMALL

PLEASE PHONE  
**PETER ON 01256 355534**

# S. M. DECORATORS

*Interior & Exterior  
Prompt & Efficient Service  
Competitive Prices  
Fully Insured Company  
Over 25 Years Experience  
Skim Plastering and  
Paperhanging Specialists  
City & Guilds Qualified  
All Work Guaranteed  
For Your  
Free Estimate Or Advice  
Please call Steve on  
**01256 811929***

# HORIZON SOUND & VISION

Family Run Business Est 1988

- **Aerial & Dish Installations**  
Freeview, Freesat, Sky & European
- **Freeview, Sky or Freesat on additional TVs**  
Magic Eye control & HD. Phone & Ethernet points.
- **TV Wall Installation**  
Free site survey. System planning. Hidden cabling
- **Tuning & set up of your equipment**  
Cable tidying  
Weak/low signal improvement
- **WiFi Signal Improvement & Network Cabling**

- **CCTV Installations**

- **Audio & Speaker Systems**  
Home, Outdoor & Workplace



Checkatrade.com  
Where reputation matters

**01256 841860**

Visit us at Essex Road Basingstoke  
[www.horizonsatellites.co.uk](http://www.horizonsatellites.co.uk) [info@horizonsatellites.co.uk](mailto:info@horizonsatellites.co.uk)



Over 35 years experience in all  
types of domestic, commercial and  
industrial fencing

**FREE** estimates and advice with  
**no obligation** and good quality  
workmanship are **GUARANTEED**

**CALL US 01256 358 940**  
[www.fencing-in-basingstoke.co.uk](http://www.fencing-in-basingstoke.co.uk)

**PC Doctor** (Hampshire) Ltd

**Andy Pearce 01256 841204**



Home & Small Business PC's/printers supplied.  
PC repairs & upgrades, Laptops & Desktops.  
Wireless networking. Virus & Malware removal.  
New PC & Tablet setup.  
Data & Email Transfer from old system.  
[pcdoc.hampshire@btinternet.com](mailto:pcdoc.hampshire@btinternet.com)

## PROBUS REMEMBERS THE BATTLE OF BRITAIN

This summer is the 80th anniversary of the Battle of Britain and today the Probus Club of Basingstoke has several members who were “regulars” in the RAF. We have a Wing Commander, two Squadron Leaders, a Flight Lieutenant and Flight Sergeant and in previous years we have had two Group Captains. None of the present day members are old enough to have served at that time although many of our mostly civilian members class themselves as War Babies and do have war time memories.

Today, one of these veterans is the Armed Forces Champion of Basingstoke & Deane Borough Council, and supports the local government in its covenant with all branches of the military, another was involved at a memorial service in Westminster Abbey when he was the usher to the chairman of the Battle of Britain Fighter Association and afterwards accompanied him to St James’ Palace for a reception with Prince Charles, a third joined the Queen’s Helicopter flight receiving a personal decoration from Her Majesty, the fourth was deeply involved in bomb disposal, and the most senior was involved with delta wing Avro Vulcans during the Cold War. All of them have been part of the array of interesting speakers at the usual monthly Probus Club lunch meetings.

But what of the majority of members who either did their National Service or were just too young to be called up? They had busy lives in industry, commerce, medicine, law and science in the locality and overseas.

They now have a fulfilling retirement helped by their membership of the Probus Club. Some are keeping fit by trying to do their 10,000 steps a day, others pleased to get back on the golf course and one keenly looking forward to being a cricket umpire. Others may be less energetic but have kept their minds active with other hobbies. Not for them the problem faced by many being on furlough with an increasing waistline but by not dining out so often has had a positive effect on their wallets.

See **[www.probusbasingstoke.club](http://www.probusbasingstoke.club)** for more information.

**Paul Flint**



Scrubs



Snoopy



## 24hr Airport Transfers

Professional Door to Door Service

**"Reliable, friendly transport solutions from a local company you can trust"**

**07747 771906**

[www.basingstokeairports.co.uk](http://www.basingstokeairports.co.uk)

Departures



Fabio and Kat have moved to their new Dental Centre

**Call for a free of charge consultation**

- IMPLANTS •DENTURES
- CROWNS & BRIDGES
- HYGIENE •WHITENING

**New patients are welcome**

Implant Dental Centre  
Denture Studio  
and Dental Laboratory



The Loddon Business Centre,  
Unit Q, Roentgen Road, Basingstoke, RG24 8NG  
[www.italdent.co.uk](http://www.italdent.co.uk) tel. 01256 355 268

# Lee Quinlan



## Kitchen

## &

## Bathroom Fitter



**You buy it and I'll fit it!**

"One stop" service for accompanying:  
Plumbing, Tiling, Plastering,  
Flooring & Woodworking

## Electrical Work



**01256 811830**

email: [enquiry@leequinlan.co.uk](mailto:enquiry@leequinlan.co.uk)  
web: [www.leequinlan.co.uk](http://www.leequinlan.co.uk)



# WESTPORT GREY

BUILDING CONTRACTORS

01256 636511

Extensions | Loft Conversions | Renovations | New Builds



[WWW.WESTPORTGREY.CO.UK](http://WWW.WESTPORTGREY.CO.UK)

Westport Grey Ltd. - Registered in England - No. 0216444

BUILDING YOUR DREAMS

### Taking the sting out of nettles.

Thanks to their sting and vigorous growth, stinging nettles are much-maligned by many gardeners and visitors to the countryside. But it has not always been this way.

Historically, nettles were an important source of food, and they were also put to a great variety of other uses. They were used as an analgesic, an animal feed supplement, dye, cloth, and food wrap for cheese, fish, and meat. Even today you can find nettle listed as a key ingredient on the supermarket shelves on anything from shampoo, to cheese, to beer!

Young nettle tops (picked from early spring to early summer) really are delicious. Steamed or simmered, like any green vegetable, the taste and texture of cooked nettles is similar to spinach and they can be substituted for it in any recipe. Full of vitamins and minerals, particularly iron, nettles are a cheap and readily available “super-food”. True to the old adage, you just need a firm grip (or gloves!) to avoid the stinging hairs when you pick them, and the cooking process will do the rest so you can enjoy their taste and goodness without worrying. You will need to pick a lot of leaves as, just like spinach, they reduce in volume when cooked. Only pick the young leaves at the top of the plant before it has gone to seed.



Stinging nettles support at least 40 different species of insect, including some of our favourite and familiar butterflies. Peacock, red admiral, small tortoiseshell, comma and painted lady butterflies all have caterpillars whose only, or main, source of food is the nettle. These caterpillars, along with the aphids and other insects that feed on nettles, sustain our woodland and garden birds throughout the spring and early summer.

Later in the year, small, seed-eating birds including chaffinches, bullfinches and house sparrows all benefit from the thousands of small seeds that each nettle plant produces. As well as giving these direct benefits to wildlife, nettles can be used by gardeners in the know to make their own nitrogen-rich nettle fertiliser. Simply half fill any watertight container with nettles, top it up with water, give it an occasional stir, and wait! After a few days it will start “brewing” – try adding some rosemary to offset the offensive smell. After three or four weeks of bubbling, strain off the solids to the compost heap and dilute the remaining liquor at one part nettle fertiliser to ten parts water, and your garden plants will love it!

Find out more about your local wildlife at [hiwwt.org.uk](http://hiwwt.org.uk)

**Alice Ashcroft**

Communications Officer



Trusted since 1802  
HENLEY-ON-THAMES | HAWLOW | BASINGSTOKE

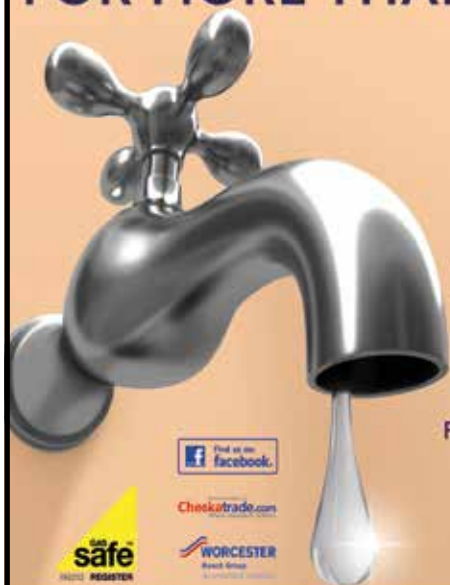


sales • lettings & management • commercial • development • rural

Residential Sales - **01256 840077** Lettings - **01256 337100**

[www.simmonsandsons.com](http://www.simmonsandsons.com) • 12 Wote Street, Basingstoke, Hants RG21 7NW

## FOR MORE THAN JUST A LEAKY TAP



**Niall Catlin**  
**PLUMBING & HEATING**

EST. 1991

Leaky taps to full bathroom installation  
Power flushing | Water softeners | Hot water cylinders

Boiler breakdowns, repair and servicing  
Boiler replacement | All allied trades  
All aspects of plumbing and heating



Checkatrade.com



WORCESTER  
Rear Group

[www.niallcatlin.co.uk](http://www.niallcatlin.co.uk)

**01256 818086 | 07774 741021**

Serving Basingstoke for over 35 Years



#### Showroom

The old Station Andover Rd  
Oakley Basingstoke RG23 7HA

Tel: (01256) 782070

OPEN 9am - 5pm MONDAY - FRIDAY CLOSED WEDNESDAY

SATURDAY 10am - 4pm

VINYL, WOOD, CARPETS, LAMINATE,  
FURNITURE FOR THE DINING ROOM, LOUNGE, BEDROOM  
AND STUDY

Range of Accessories and  
Hand Made Jewellery.

[www.oakley-furnishing.co.uk](http://www.oakley-furnishing.co.uk)

**CARPET EDGING SERVICE  
ALSO AVAILABLE**

*Rugs Made Your size*

Many Items in stock for Fast Free Delivery



British made Beds Back on Show Free Delivery Approx 1 week

## LODDON

WINDOWS & DOORS

Local Family Run Business Established for over 35 years



GREAT RANGE INCLUDING:

Conservatories | Windows | Aluminium Bi-fold Doors | Composite Doors

- ✓ Quality UPVC Windows and Conservatories
- ✓ Attention to Detail - Local Recommendations
- ✓ Competitive Prices - Free Quotations
- ✓ 10 Year Guarantee - FENSA Registered

Tel: 0118 9815440 | 01256 464304 (evenings) | 07831 200613 (mobile) | [www.loddonwindows.co.uk](http://www.loddonwindows.co.uk)

## ARMED FORCES GOLF DAY 24TH AUGUST 2020

This event was due to take place in mid-June but for obvious reasons had to be postponed. However, we plan to hold it now on **Monday, 24th August** at **Sherfield Oaks** golf course and hopefully we can enjoy all of the usual components of this fund-raiser.

So, the plan is to meet (at 1m distance!) for coffee and bacon roll, play 18 holes on the Waterloo course in a four-man format followed by a one course lunch. This, and a contribution for prizes plus a donation to the RBL Poppy Appeal will be at the very competitive price of £43 per person. Full details on the entry form will be available toward the end of July once all the above is confirmed as OK to proceed.

Please ring, text or email me for a form, entering as a single player or perhaps as an organiser for a team of four.

## THE GOOD OLD BASING GOLF DAY 2020

It's also intended that we run the annual Good Old Basing Charity golf day as usual, this time on **Friday, September 18th**, again at **Sherfield Oaks**.

Contact Steve or Rick in early August for a form if you would like to play in what is our sixteenth annual event. The day will consist of 27 holes of golf, coffee & bacon roll, lunch and two course dinner, plus contribution to prizes, all for same as last years cost of just £58. It's unlikely we will seek prize donations this year because of the hardship local businesses have felt so there will be cash prizes for all par 3's, entry into which will be on the day for a small extra cost.

Cost to members of Sherfield Oaks will be £32. 'Other halves' are warmly invited to join everyone for the evening meal and presentation for just £15.

Remember that this event is also designed to raise money for the winners' chosen charity so you need to be prepared to nominate one if you win! The event is intended for, but not exclusively to Old Basing and Lychpit residents. Families of residents and former villagers are very welcome to play. **Last date for entry will be Friday, 11th September**

**Rick Bourne 07900 648675 and Steve Western 07920 840985**

**rickbourne@yahoo.com**



Paddington Bear



Little Darth Vader



Postman Pat, and Jess



## NATURE NOTES FOR AUGUST

Despite many of you being still at home and able to enjoy the great outdoors, it's been a fairly quiet past couple of weeks for nature updates. The weather has been a little changeable from sweltering sunshine to cool rainy conditions (today, 30th June!) and although most of us prefer the sun, the garden plants and creatures within really needed the water. Our nightly visits from hedgehogs have much appreciated the water dish left alongside the food and you've got to wonder where they might have found enough to drink otherwise with bone dry undergrowth offering nothing.

A great story now from Fairthorne Rise and the home of Sheila Barclay. Sheila contacted me last week about a racing pigeon that had taken up residence in her garden and had even strolled into the house on occasions.

I recommended she try and catch the bird, which was obviously tame anyway, and get the rings identity which might reveal the home and owner who could be concerned about his lost 'baby'. With assistance Sheila managed to do this and to her surprise found that the bird belonged to someone in County Antrim, N. Ireland so had clearly got well lost from its release point in the UK or perhaps from across the channel. To our astonishment, it turns out the pigeon went missing LAST YEAR so the owner must have considered it pre-dated or re-homed somewhere. Anyway, a pick-up by an intermediary was then arranged and by now one hopes bird and owner are reunited.

Keen photographer and correspondent **Terry McAnish** sent the cute picture of immature robins perched on his garden fence and reported mixed success for a Blue Tit brood in his camera nest box. After 10 chicks hatched 5 perished and weren't ejected by the parent. Terry could see they were struggling so intervened to get the dead chicks out just in time



for the remaining 5 to fledge, seemingly none the worse. Like many of us this year, Terry also noticed evidence of visiting hedgehogs so installed a garden camera so he could monitor the nocturnal visits. Another prolific mammal seen this summer, certainly along Cavalier Road are have been bats, again down to the lovely warm calm evenings that May and early June brought. There has been a huge number of nuisance flying insects mentioned by residents backing on to the canal, especially where water lays for most of the year so bats and other aerial feeders will be very welcome!



Allison Hawksworth was charmed by the family of Long Tailed Tits that alighted on her garden feeders but was drawn to one individual who was a 'short tailed' version. Perhaps not fully developed yet or maybe growth stunted in its nest we don't know but the peculiarity wasn't preventing the little'un from keeping up with its siblings.

**Phil Males** usual has an army of frogs in his substantial garden pond but not so this year. Instead, newts by the bucket-load! We believe that many frogs perished during the early spring freeze-up in 2019 so the population has plummeted but seemingly newts have better mechanisms to deal with such harsh conditions and they have been abundant this year. As well as these Phil has been welcoming two juvenile Great Spotted Woodpeckers to his feeder and he snapped one here about to tuck into the peanuts.

**Rick Bourne**

Don't forget to send all your nature related photos to [rickbourne@yahoo.com](mailto:rickbourne@yahoo.com) or alternatively, [naturenotes@basinga.org.uk](mailto:naturenotes@basinga.org.uk) Or ring **321108** for news. For all your bird food requirements, order it from me at '**Bird Drop-ins**' use the former email address or ring me on **07900 648675** to place an order or get a form.



## OLD BASING GARDEN AND ALLOTMENT SOCIETY

The second allotment inspections of the year have now been carried out and almost all of the plots are looking fantastic this year. Lock-down does seem to have had some working very hard on their outdoor spaces. Unfortunately there have been a few reports of produce and equipment going missing. Please get in touch with us via the Facebook page or website if you notice anything suspicious so that we can report it appropriately.

There are as yet no plans to reopen the shop as many of our volunteers are in the older age bracket and may still be shielding but updates will be posted online once the situation changes.

Keep on top of your watering, especially tomatoes which can suffer from blossom end rot if watered irregularly. Carrots, runner beans, beetroot, courgettes and sweetcorn will all be ready for harvesting now. Summer fruiting raspberry canes can be cut to the ground once they have fruited. If you have a glut of something, perhaps consider making some jam or chutney, or arrange some socially distanced harvest swapping with a neighbour.

[facebook.com/oldbasingallotments](https://facebook.com/oldbasingallotments)

[www.obags.uk](http://www.obags.uk)

**Tracy Braybrook**

## AUGUST IN YOUR GARDEN

My usual advice for this month would be to make sure that you keep on top of your watering routine. By now water butts may have run dry. The first job is to prioritise plants that need a lot of water in order to survive. Pots, tomatoes, sweetcorn and pumpkins are some of these, but I'm sure you know which of yours need the most water.

There are lots of tips about saving and making the most of water available, but most require some forethought and need to be in place before the dry spell happens. Something that you can do after watering that will retain moisture in the soil is to mulch around the base of your plants with grass clippings, bark chips or even compost. Avoid using peat-based compost however as it dries out quickly. Try watering in the early morning, allowing the water to seep into the soil rather than evaporate. Evening watering is also fine, as the cooler conditions mean less water is lost through evaporation.

Other jobs that need doing include pruning climbing roses once they have finished flowering. Wisteria will also benefit from pruning, remove all 'whippy' side shoots from the main branch. Also deadhead dahlias and other perennials to encourage a constant display of blooms.

If you have plants fruiting in containers, make sure you give them a high potash liquid to keep plants healthy and productive.

Cuttings can be taken of Fuschia now and will quickly take root, ensuring that they survive the winter. Ensure that water baths are topped up, and also ponds. Tomato plants should by now have five to six trusses on each plant, if so remove the growing tip and the lower leaves to allow light in and prevent disease spreading.

Look out for symptoms of Clematis Wilt such as wilting leaves and black discolouration on the leaves and stems of your Clematis. Cut out any infected plant material and dispose of it in your household waste.

Trim your lavender plants after they have finished flowering to keep them compact, but avoid cutting into old wood. You may also want to consider taking cuttings of your lavender, now is the perfect time. Now is also the perfect month for sowing a wildflower meadow, which will be glorious and beneficial to all kinds of wildlife next year. Even a small space can make a great wildflower area, they thrive on rough and nutrient poor soil, so its a great way to use up neglected areas.

Although it's nice to be able to enjoy the sun real damage might be done if it continues for long periods. Best plan now for water catching and saving techniques for the years to come.

### BASINGA EXTRA

*We were not able to include every article that we received; these are available on-line on our website: [www.basinga.org.uk](http://www.basinga.org.uk)*

**Big Thank You**

**BVA**

**Civil Service Retirement Fellowship**

**Lions Club**

**OCH Newsletter**

**BDBC Play Areas**



Jeremy Caw-Binbag – Pyotts Hill

- Loft ladders & loft hatches
- Boarding, Lighting & Insulation



## CREATING SPACE THE EASY WAY!

### MAJOR BENEFITS

- De-clutter your home
- Create up to a third more space
- Gain safe & easy loft access
- No mess, no fuss, no subcontractors

Call now to book a FREE survey & quotation

**01256 688648**



[WWW.ACCESS4LOFTS.CO.UK](http://WWW.ACCESS4LOFTS.CO.UK)



## TRILBYS

BARBERSHOP & HAIRDRESSERS  
EST 1991

**Now open in Belle Vue Rd  
Old Basing.**  
**Hairdressing for the whole  
family.**  
**01256 357333**



## BLUE WILLOW COACHING

Career and Life Coaching

- Do you feel stuck in your professional life and need support to work out - what's the right way to go?
- Do you want to learn how to challenge your "inner critic" and build your emotional resilience?
- Do you want to increase your confidence and presence?
- Do you want to get in touch with who you are and what you truly want to do?

Siobhain Whitty is a professionally trained executive and life Coach, certified with the International Coach Federation and Academy of Executive Coaching.

Book a **FREE 30 minute, no obligation sample session**

Contact Siobhain at:

[info@bluewillowcoaching.co.uk](mailto:info@bluewillowcoaching.co.uk)

[www.bluewillowcoaching.co.uk](http://www.bluewillowcoaching.co.uk)

07894 209 698

*Conversations with  
a purpose*

## M.C.PEGG

**Plumbing, Heating & Gas Services**

**Local & Reliable**

**All Plumbing and Heating Installations**  
**Gas Safe Registered - 195010**

**Bathroom Suites/Showers**  
**Gas Safety Certificates**  
**Boilers, Hot Water Tanks,**  
**Heating systems,**  
**Servicing**

**FREE ESTIMATES**



**Tel: 01256 308462**

**Mob: 07973 217020**

**Email: [matthew.pegg1@btinternet.com](mailto:matthew.pegg1@btinternet.com)**

## Spencer & Peyton Ltd

*Established 1961*

3rd Generation  
family owned  
and run Funeral  
Directors and  
Monumental  
Masons

**24 Hours**

**Our family  
serving your family  
for over 55 years**

**380 Worting Road  
Basingstoke, RG22 5DZ  
01256 323165**

*(Flower Girl Florist on site)*

**7 London Road  
Hook, RG27 9DY  
01256 761717**

**Trading Standards approved**

**Pre-paid funeral plans  
discussed without obligation**

**[spencerandpeyton@btconnect.com](mailto:spencerandpeyton@btconnect.com)**

**[www.spencerandpeyton.co.uk](http://www.spencerandpeyton.co.uk)**





**10**  
YEAR  
GUARANTEE



**NJP Heating Services**

**0% finance**

on all Worcester Bosch boilers

complete with up to 10 year guarantees on all  
Worcester Bosch boilers and controls

Contact us today for your free quote

**07717 741999 or  
01256 782202**

nick@njpheating.com | njpheating.com



## Basing Pedicare

Fully qualified mobile Foot Health Practitioner

- Toe Nail Cutting
- Corn And Callus Management
- Diabetic Foot Management
- Verruca Care



Contact

Malinda Snook MCHP MAHP  
to make your appointment-  
I visit you in your home!

**07751 474322**



**Prime Improvements**  
Home & Garden

**07841 532 878**

Painting & Decorating  
Handyman Jobs  
Tiling  
Flooring

Grass & Hedge cutting  
Garden Clearance  
Fencing & Decking  
Sheds & Cabins

[www.primeimprovements.co.uk](http://www.primeimprovements.co.uk)

## The Complete Tree Service

- Residential & commercial work
- Tree removal, thinning & lifting
- Stump removal, scrub clearance & hedge trimming

Over 25 years experience -  
fully trained, insured & certified.  
We guarantee we can help.  
Call for professional, friendly advice.



Teams all over Hampshire, Surrey,  
Sussex and the South:

**01256 763 162**

[www.cedardale.co.uk](http://www.cedardale.co.uk)

**Checkatrade.com**  
Where reputation matters







High quality and friendly MSK,  
Back Pain and Neck Pain service  
with professionals who listen

**Annette and Gordon Linscott**

35 Years in Basingstoke  
Now on your doorstep

East Barn, Lychpit Centre  
01256 466 666

[www.spineteam.co.uk](http://www.spineteam.co.uk)



**THERMOFLUX**  
PLUMBING AND HEATING SERVICES

Fully insured | Over 16 years experience |  
Free no obligation quotations

Boiler and heating system installation specialist

General plumbing

Bathroom installations

Water softener installations

Power flushing

Un-vented hot water systems



T: 07891 226591 | E: [Thermofluxplumbing@outlook.com](mailto:Thermofluxplumbing@outlook.com)

**TWO GUYS**  
KITCHENS / BATHROOMS / APPLIANCES



SERVING THE PEOPLE OF BASINGSTOKE & NORTH HAMPSHIRE SINCE 1968

**FINANCE  
NOW  
AVAILABLE**

Please ask  
for details

**DESIGN,  
SALES & FULL  
INSTALLATION  
SERVICE**

01256 363123 | [twoguys.co.uk](http://twoguys.co.uk)

ARMSTRONG ROAD, DANESHILL EAST, BASINGSTOKE, HAMPSHIRE RG24 8NU

## ● BASINGA

**EDITOR:** Colin Follett, 101 The Street, Old Basing, RG24 7DA 01256 326909

**ADVERTISING:** Email: [advertising@basinga.org.uk](mailto:advertising@basinga.org.uk)

**SECRETARY:** Graham Merry, 40 Linden Avenue, Old Basing, RG24 7HS 01256 463908

**TREASURER:** Andy Groves, 30 Pyotts Copse, Old Basing, RG24 8WE 07918 644187

### **DISTRIBUTION:**

**Old Basing Area:** Peter Watson, 19 Priory Gardens, Old Basing, RG24 7DS 01256 352299

**Lychpit Area:** Andree McLean, 6 Pimpernel Way, Lychpit, RG24 8SS 01256 819006

**WEBMASTER:** Email: [webtech@basinga.org.uk](mailto:webtech@basinga.org.uk)

## ● OLD BASING & LYCHPIT PARISH COUNCIL

**CLERK:** Sandra Tuck 01256 462847

**OFFICE AND HOURS:** The Pavilion, The Recreation Ground

Monday to Thursday 10.00am to noon

## ● CHURCH INFORMATION FOR THE AREA

### **Church of England (Parish of Old Basing & Lychpit)**

**VICAR:** Revd. Heather Leppard, The Vicarage, Church Lane, Old Basing 01256 363612

Email: [vicar@stmarysoldbasing.org.uk](mailto:vicar@stmarysoldbasing.org.uk) 07745 731729

**ADMINISTRATOR:** Debbie Filer 07541 698235

**CHURCHWARDENS:** Tricia Renwick 01256 326155

Ian Kershaw 01256 355500

### **Regular Services at St Mary's Church, Old Basing**

**SUNDAY:** 8am Holy Communion; 9.30am Sung Eucharist and Junior Church;  
5.30pm Evening Service

**OTHER DAYS:** Wednesday 10am Holy Communion

*Changes to the regular service pattern and other weekday services are shown  
in the weekly news-sheet, a copy of which is displayed on the noticeboard in  
the church porch*

### **Old Basing Methodist Church**

**MINISTER:** Revd. David Jenkins 01183271592

07973195566

**SUNDAY SERVICE:** 10.30am Morning Service

### **Roman Catholic**

**PRIEST:** Fr Christopher Rutledge 01256 465214

St Bede's Church, Popley Way, Basingstoke

**SUNDAY MASSES:** 9am, 11am and 6.30pm

need a **painter** and **decorator**?



- professional
- friendly
- affordable
- experienced
- reliable
- fully insured

pscdecoratingservices

call us today for a free no obligation quote  
**01256 334852 07919 358050**  
pscdecoratingservices@gmail.com

## Infinite Harmony Hatha Yoga

4 classes to choose from:

### Gentle Chair Yoga

If you have mobility/injury concerns then this is the class for you. All yoga is done on a chair and using props.

Monday's

14.00 - 15.00

Lychpit  
Community Hall

### Relax Yoga

This class is for all levels of ability and uses postures to help you relax and deepen your yoga practice.

Tuesday's

19.15 - 20.15

St Mary's  
Church Hall,  
Old Basing

### Sunday Morning Yoga

This class is for all levels of ability and focuses on strength and flexibility.

Sunday's

09.15 - 10.15

Lychpit  
Community Hall

### Sunday Night Satsang

This is deep relaxation yoga. You will be led through a series of gentle yoga postures followed by an extended guided meditation.

1st Sunday

of the month

18.30 - 19.30

Lychpit  
Community Hall



Contact Vicky on 01256 910108 or  
email vicky@infiniteharmony.co.uk  
Don't forget to book your space.



For more information visit [www.infiniteharmony.co.uk](http://www.infiniteharmony.co.uk)



## Tree Surgeon

01256 763859

07766 256788

TreeSceneArb@gmail.com



TREE SCENE  
ARBORICULTURE

Adrian Stanley

BSc(Hon) AA Tech Cert

Qualified & experienced  
arborist

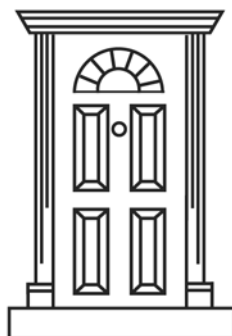
- All aspects of tree work & stump grinding
- Fully insured (£5m) - free estimates
- Logs supplied

## Basing Electrical Ltd

For all your electrical needs.  
Both in and outside your home.

Part P Approved NIC EIC Registered.

Call John on 07793748360



## DAVID MATTHEWS

Carpentry & Joinery Services

Chineham, Basingstoke. Tel: 01256 476207

- ❖ Doors ❖ Wardrobes ❖ Kitchen Design Service
- ❖ Custom Made Units



# Outdoor Fitness *is* HEALTHIER

The Beechdown Club has invested heavily to provide unrivalled outdoor fitness facilities:

- 📍 Floodlit Open-Air Gym
- 📍 Floodlit Running Track
- 📍 Floodlit Workout Hubs
- 📍 Floodlit Boot Camp Court
- 📍 Floodlit Football Pitch
- 📍 Floodlit Tennis Courts

But if the British weather deters you from enjoying the Outdoors, then come inside and indulge in the most extensive array of fitness and relaxation in the area. All air-conditioned, all Covid-safe and all respecting social distancing with sanitisation stations and regular cleaning.



*Reopening early July. We look forward to welcoming existing members to all the new facilities. Limited numbers. Waiting list open.*



Visit our website  
**beechdown.co.uk**

Call us on  
**01256 36 22 22**

Find us at  
**Winchester Rd  
RG22 4ES**