

February 2020

BASINGA



Jim Andrews



Old Basing and Lychpit Parish Magazine
www.basinga.org.uk

Proud to be supporting businesses and organisations in the Basingstoke and surrounding areas for 22 years



Your local one-stop provider of professional marketing & design support and graphic communication materials.



ISO12647



Trusted
Business

100%

of customers surveyed would
recommend Greenhouse

greenhouse 
Marketing | Design | Production

Call 01256 880770 www.greenhousegraphics.co.uk

FEBRUARY NOTES AND NEWS

The cover photograph this month is of a Kingfisher, perched on a branch by the Loddon, taken by Jim Andrews. Nature news, notes and photos can be found on pages 36 and 37.

Chris Beadle has been awarded a **British Empire Medal** in the Queen's New Year's Honours for his services to the community of Old Basing and Basingstoke. For those of you around the village that know Chris, I'm sure you'll agree this is very well deserved. His positive efforts do not go unnoticed and we're so pleased that with the help of a number of friends and community members we were successful in his nomination. Chris is overwhelmed with his award, many thanks to those that contributed.

CONTRIBUTIONS TO THE BASINGA

We welcome both regular and occasional items for the Basinga. The very last date for copy to the Editor for the **February edition** is **6 pm on Monday, 10th February**. Please use the forms on the Basinga website: **www.basinga.org.uk** to get your dates, articles and letters to us (see box on page 15 for further instructions). All **advertising** enquiries – classified, free adverts or inserts (flyers) can also be made via the Basinga website. Don't forget that we only accept articles with about a **300 word maximum**.

PHOTOS AND LOGOS FOR THE BASINGA

If any reader would like to offer a **photograph of the village environment** we would be happy to receive them, either for immediate use, as above, or to build up a portfolio of 'village views' that we can use when appropriate. Similarly, any club, organisation or society can send us their logo to use alongside their articles. Go to **www.basinga.org.uk** and the form can be found on the '**Contributors Submission**' drop-down menu.

BASINGA DELIVERERS NEEDED

The **Basinga** requires local **deliverers** of the Basinga in Old Basing, specifically in the **London Road** area, either side of **Hatch Lane** and **Huish Lane**. It's not an arduous task and requires less than an hour a month to deliver the magazine in your local area. If you are interested please email: **basing@basinga.org.uk** or tel. **01256 352299** or **07790 279954**.

LETTER TO THE EDITOR

Geoffrey Rhodes makes a fair point about the Lychpit bus service and the fact that our Sunday service is now so much better than weekdays. (Basinga January)

Unfortunately, he omits to give credit to Stagecoach for one vast improvement – our last bus from town is now 23.05 Monday to Wednesday and 00.05 Thursday to Saturday (previously 21.10). I just wish Stagecoach would publicise this at the railway station – it's not unusual to hop in a taxi and find you're in a line of four or five that all head up Basing View towards Lychpit and Chineham. We need to use these new services before Stagecoach decide they're uneconomic...

As for the weekday daytime service, surely it wouldn't take much for just one of the three an hour No 7s that run via Wade Road to divert via Lychpit...?

Yours optimistically,

Keith Bailey

CHINEHAM LIBRARY

Our activities all continue in the regular pattern for this month, with the only changes taking place in half term. **Rhymetimes** take place **every Tuesday**, for **under ones at 10.00am** and **over ones at 11.00am**. **Storytimes** take place every **Saturday** morning at **11.00am**, except for the first week when we hold a **drop-in craft session** from **10.00am to midday**. This month crafts will take place on **Saturday, 1st February**, and then the **7th March**. Our **Chatterbooks** group for junior school age children will meet on the **13th February** and **11th March** at **3.45pm**.

Every Wednesday we hold our drop-in **Cuppa and Chat** group for adults to chat over some refreshments, which takes place from **10.30am to midday**. Also, on **Wednesdays** **Age Concern** offer assistance with **IT** from **10.00am to 1.00pm** for the **over 50s**. **Sessions are bookable through their office on: 01256 423874, for a £5 donation**. Both these would welcome some new faces. (Age Concern stop for half term.) Our **General Reading Group** will meet on **Saturday, 29th February** and **Saturday, 28th March**, at **10.30am**. The **Writing Group** meets on **Thursday, 6th February** and the **Thursday, 5th March** both from **5.30 to 7.00pm**.

We have a couple of bookable events being held in the near future. There is a **'Scenes of Crime'** talk on **Thursday, 26th March**, with former **Police Officer Ken Wells** sharing reflections from his career. On **Thursday, 23rd April** we have a **'Great Train Robbery'** talk, with **Tony Keep**. Both talks commence at **6.00pm**, and tickets costing **£5.00** are available from the library or the online shop. On **Thursday, 6th February** we are again holding a children's **Harry Potter** night, from **5.30 to 7.00pm**. This event is free, but due to limited availability places must be booked in advance.

Don't forget we now also offer room hire, please ask for further details.

Cathy Foster

BOLTON UNDER 5'S PRESCHOOL

Welcome back to all our children and families. We hope you had a wonderful Christmas. We are now looking forward to the new term with our five new starters. We have a lot of exciting events planned for our children to enjoy.

We'd like to say a massive **THANK YOU** to our local **Coop** and everyone who participated in collecting points for us. Our wonderful community in Old Basing and Lychpit raised almost **£3,000** for us. **WOW!**

As a charity, we rely on fundraising to bolster our income, so thank you everyone. It makes a huge difference to the children. We would also like to thank everyone who has donated lovely toys and equipment, which our children love playing with.

If you are interested in your child joining our 'Outstanding' preschool, we have plenty of spaces from September 2020 and we still have a few sessions on offer for this academic year. Come and see our family style preschool in action!

Please do call us on **07881 920709** or **01256 478141**. Happy 2020!

Sam Leadbetter

DO YOU HAVE A WILL IN PLACE?



CLARKE
& SON
SOLICITORS

A Will is quite possibly one of the most important documents you will ever sign.

Call now to book a free Will healthcheck or to start the process of making your Will.

Clarke & Son Solicitors LLP

Manor House 8 Winchester Road Basingstoke Hampshire RG21 8UG

T: 01256 320555

www.clarkeandson.co.uk

M MARTIN
MATTHEWSON

Call Us:
01256 364753

ALL MAKES SERVICING & REPAIRS
THE VOLVO & NISSAN SPECIALISTS



MOT TEST
CENTRE



Visit: www.garagebasingstoke.co.uk

FREE Local Collection & Delivery T&C's Apply



Unit 1 Pensdell Farm, Farleigh Road, Cliddesden, Basingstoke, Hants, RG25 4HA

www.basingtutors.com

Basing Tutors

- One-to-One Tuition
- Friendly, personal approach
- Professional tutors

Full diagnostic assessment
with no further obligation

Initial consultation
free of charge

Tel: 01256 470948

Email: admin@basingtutors.com

Local
Tutors
For Local
People



20% OFF

selected products
offer exclusively for
Basinga readers

(With this advert. New orders only)

Visit Basingstoke's most recommended bathroom
& kitchen supplier and installer... Checkatrade.com

A1 Bathrooms & Kitchens

- Fully employed fitters
- 24/7 Emergency callout
- Project managed installation
- Comprehensive insurance
- 4 year labour guarantee



Checkatrade.com

Ask to speak to any of our customers!

Your Dream, Our Creation

www.a1bathrooms.co.uk

SHOWROOM: Unit 3, Cartel Business Centre, Stroudley Road, Basingstoke RG24 8FW T: 01256 810460

OLD BASING BOILER SERVICES



Boiler Installations

Servicing and Repairs

Unvented/Vented Cylinders

Power Flushing
of Heating Systems

Free Estimates

No Call Out Charge

Landlord Certificates

Fully Insured

01256819521 **Bill Martin** 07990514472

www.oldbasingboilerservices.com

Keeping you Gas Safe



**CONTACT BASINGSTOKE
01256 325575 ANYTIME**

**ARE YOU A WORKING WIFE?
AND TIRED OF COPING WITH THE HOUSEWORK?**

WE PROVIDE

REGULAR/HOUSE MOVE/END OF TENANCY CLEANS
IRONING, OVENS AND CARPET CLEANING
OVER 25 YEARS IN BASINGSTOKE



RING US TODAY FOR A FREE BROCHURE

01256 325575



CHEQUERS

Independent Estate Agents



**Thinking of Selling in Old Basing/
Lychpit in 2020 or on the market
without results*?**

Choose an agent one step ahead of the rest...

**Call 01256 810018
and we'll get you moving**

successfully selling property for over 28 years....

www.chequeresestateagents.co.uk

T 01256 810018 E sales@chequeresestateagents.co.uk

*If you have instructed another agent on a sole agency and/or sole selling rights basis, the terms of those instructions must be considered to avoid a possible liability to pay two commissions.

BOXING DAY WALK

Possibly a distant memory for some after New Year celebrations, but we should not forget to thank Tony Stoney and Andrew Howard for managing the Boxing Day Walk which went ahead with 30 hardy souls turning out despite the extremely wet and windy conditions.

SOLAR FARM PROPOSAL

Following a screening request for a potential Solar Farm on land to the east of the recreation ground, and acknowledging the importance of a major development on the farmland in this area the Parish Council has formed a sub-committee to consider these and any associated Planning Applications that may be submitted.

At the time of writing the committee has met twice and has been fact finding. At the latest meeting residents were invited to speak and it was clear there were many concerns about the potential additional water run-off and associated traffic required for both the installation and maintenance of such a scheme. These concerns became much greater when a representative for Bovis Homes suggested a parallel application for hundreds of homes was also being considered. The council's consent would be sought to allow access to this large development from Riley Lane. The council considers this idea to be laughable as Riley Lane and the roadways serving it (The Street, Milkingpen Lane etc) are not suited to the current levels of traffic let alone the additional 2000 vehicle movements a day that such a development would inevitably bring.

The energy company involved to date has been less than forthcoming with details of the proposal; despite claiming to be experts and having been involved in other similar schemes they are not willing at this stage to divulge the size and quantity of the containers involved or the proposed connection point to the National Grid, nor the nature of screening planting.

We continue to press for further details so a considered response can be made to any applications once submitted although residents are as always advised to raise their own comments and objections directly on the planning website once applications are lodged. The committee will continue to meet approximately monthly until the matters are decided and these meetings (like all Parish Council meetings) are open to the public. The council will also press the companies involved to hold timely public consultation sessions of their own as appropriate.

WADE ROAD RECYCLING CENTRE

In the Spring Hampshire County Council will be rolling out a vehicle recognition system at the Wade Road Recycling Centre. Residents can register up to three cars per household free of charge; find out more about the scheme on: www.hants.gov.uk/vehicle-registration-hwrc

PARISH COUNCIL MEETINGS

Next two meetings: **Tuesday, 4th February and 3rd March at 7.30pm** in the **Pavilion Committee Room**. All are welcome and anyone with impaired mobility should contact the Office.

Parish Clerk: **Mrs Sandra Tuck**

Assistant Clerk: **Mrs Kate Hope**

Address: **The Pavilion, The Recreation Ground, The Street, Old Basing, RG24 7DA.**

Telephone: **01256 462847**

Office Hours: **Monday to Thursday 10.00am to noon**

Email: **clerk@oldbasing.gov.uk**

Web: **www.oldbasing.gov.uk**



R.T. MITCHELL & SONS BUILDING CONTRACTORS

Est. in Old Basing 1972

HOUSES

EXTENSIONS

GARAGES

LOFT CONVERSIONS

ALTERATIONS

RESTORATION OF LISTED BUILDINGS

Tel: 01256 352225

www.rtmitchellandsons.co.uk



The Water Softener Specialists



- Manufacturing water softeners for over 30 years
- Latest non-electric block salt water softeners
- New installations & repairs
- Advanced technology water filters for pure drinking water
- No call-out charge
- Based in Hook

Fitted, fully reconditioned water softeners from just £395 (includes warranty).

Tel: 01256 768171

Mobile: 07836 247694

www.amsmayfair.co.uk



MIKE'S GARDEN SERVICES

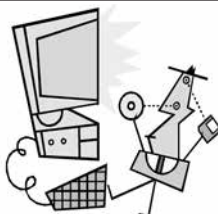
- General garden maintenance
- Landscaping and planting
- Garden clearances • Tree / hedge work
- Fence & shed work / treatments
- Lawn mowing • Turf laying
- No job too small • Fully insured
- Logs, Kindling and De-icer deliveries
- Free estimates • Competitive rates

Tel: 01256 325015

mnm.chapman@talktalk.net

www.gardenerbasingstoke.com

AFFORDABLE CARE & SUPPORT
FOR ALL YOUR GARDEN NEEDS



PC-fix-IT

Tel: 01256 474997
or 07909 681606
www.pcfixit.co.uk

Repairs, Upgrades, Virus removal,
Broadband, Internet, Wireless, etc.

Reliable, experienced service.



INTERIOR

EXTERIOR

Painter's Pride



**EXPERIENCED HOUSEHOLD
PAINTER & DECORATOR**

NO JOB TOO SMALL

TEL: 01256 355356 or 07876 495657

World-Class Podiatry, Locally

WHY see us?

We train to be the best we can be, so that we reach our potential and help you reach yours

HOW do we do this?

By investing in world-class, cutting edge equipment and the latest evidence-based training for our TEAM

WHAT does this mean for you?

Pro-active, forward-thinking and effective treatment in a welcoming and friendly environment

We combine our expert skills, our passion for seeing people at their best and our World-Class facilities and equipment to deliver excellence in Podiatric care

- Foot and leg pain
- Running injuries
- Hard Skin
- In-growing toenail management
- Video Gait Analysis using Optogait Technology
- Swift Verruca Treatment
- Shockwave Therapy for tendon injuries



To book an appointment to see a Podiatrist
Call 0800 999 7337

OR visit
www.eclipsefootclinic.co.uk
to book online

Visit us at Lychpit Surgery



Mention the code
BASINGA2 when
booking your first
appointment to
receive a free gift!

Transforming homes in Old Basing since 1996

Quote
'BASINGA'
for a preferential
quote.



- ✓ Windows & Doors
- ✓ Conservatories & Orangeries
- ✓ Garage Doors
- ✓ Guaranteed Work
- ✓ Great Prices



Call 01256 841522

riptonwindows.co.uk

LINGUATASTIC LANGUAGE SCHOOL

Last month, we wrote about Epiphany and how it is celebrated in Italy. Well, in our French and Spanish classes at the beginning of January, we also celebrated Epiphany when children (and adults) had the opportunity to try the Epiphany cakes which are eaten in France and Spain. The cakes were brought back especially from the respective countries so that our learners got a “real taste” – pardon the pun – for the culture!

This month, there will be some “crêpes” on offer to those learning French, as we celebrate “La Chandeleur” (Candlemas in English). Now, La Chandeleur is not to be confused with Shrove Tuesday / Pancake Day. It was originally a religious festival, stemming from pagan traditions celebrating the fertility of the earth and the beginning of the end of winter. Pancakes were a good way of using up the extra wheat ahead of the new harvest. And symbolically, a pancake looks like a sun, so it was a reason to rejoice as the days started to get longer.

What in the UK is referred to as “Shrove Tuesday”, is in France, known as “Mardi Gras” (Fat Tuesday), when lots of fatty foods get eaten before the fasting period starts on Ash Wednesday.

And talking of Lent, the season of reflection, it brings to mind the time of reflection we were having before Christmas when we tried to remind the children how it’s important to think about others too. One way we did this was by singing at Tesco Chineham as part of its Toy Bank Appeal and we’ve just heard that between our German group and the many other groups who sang there, **£945.58 was raised**. This, along with instore fundraising and donations of money and toys, meant that over 942 gifts were passed on to local Children’s Services!

BASING ROYALS FC

Wow! Thanks to the generosity of the club’s children and parents, **Basing Royals FC** was able to present **Tesco, Chineham** with over 50 gifts before Christmas to put towards their **Toy Bank** appeal. As part of the club’s festive celebrations, the local club wanted to give something back to the community so children came loaded up with gifts to pledge at their annual Xmas party! Community is a big part of the football club. So much so, it sits alongside Respect and Trust on the club badge!



To find out more about the FA Charter Standard club, please take a look at the latest newsletter basingroyals.co.uk/newsletter. Want to get involved? Spaces available for U11 (Year 6 from Sept 20) so please get in contact.

We’d love to hear from you and invite children to join us for a FREE training session with a great bunch of kids! football@basingroyalsfc.co.uk

The Barn Animal Hospital

The only Small Animal Hospital in the Basingstoke area.

Our friendly caring team welcomes new clients and their pets to our purpose-built veterinary hospital with 24 hour on-site nursing care.

- Vaccinations
- Puppy parties
- Pet passports
- Neutering
- Microchipping
- In-house laboratory
- Ultrasound, ECG
- X-ray & dental X-ray
- Endoscope
- Veterinary ambulance



The Barn
Animal Hospital

W: www.barnvets.co.uk

T: 01256 329 522 **E:** reception@barnvets.co.uk

A: Paynes Meadow, Lychpit, Basingstoke, RG24 8AD

CONSIDER IT DONE!



PAINTING & DECORATING HOUSEHOLD MAINTENANCE

**** FULLY INSURED ****

**** HIGHLY EXPERIENCED PROFESSIONAL ****

**** DILIGENT & TRUSTWORTHY ****

**** REFERENCES AVAILABLE ****

Call Graham: 07494 294246

Email: consideritdone.hampshire@gmail.com

Facebook: www.facebook.com/consideritdone80

Lamberts Plumbing Services

PLUMBING & HEATING CONTRACTORS

BOILER INSTALLATION & SERVICING

BATHROOM INSTALLATION & TILING

GAS SAFETY INSPECTIONS

ALL ASPECTS OF MAINTENANCE REPAIRS

NO JOB TOO BIG OR SMALL

Railside, Station Road, Hook, Hampshire RG27 9HT

Tel: 01256 783597 Mobile: 07501 559668

Email: lamberts_plumbers@yahoo.com www.lambertsinhook.co.uk



- Window Cleaning - sills/frames/doors + text alert eve before + convenient online payment
- Professionally Qualified Carpet Cleaning
- Driveway Cleaning and Restoration
- Gutters/Fascias/Soffits Cleared and Cleaned
- Roof Moss Removal and Cleaning
- Patio and Decking Cleaning and Treatments
- Conservatory Valets
- Steam Cleaning
- Softwashing

Local | Experienced | Insured | Reliable

Contact now for your FREE quote:

01256 973144

info@cawleycleaningservices.co.uk

www.cawleycleaningservices.co.uk



facebook@cawleycleaningservices

**Start every
day with
a healthy
smile**



**Local, friendly,
professional
dental surgery**

- High quality general dentistry
- Cosmetic dentistry
- Orthodontics
- Teeth whitening
- Implants
- Facial aesthetics
- Early morning, late evening and Saturday morning appointments
- Children seen free on NHS
- Reduced rates for 18-22 year olds
- Denplan

Call 01256 840141

www.guineacourtdental.co.uk

21-22 Guinea Court, Chineham, Basingstoke RG24 8XJ



**Guinea Court
Dental Surgery**

OLD BASING VILLAGE HALL JUMBLE SALE

On Saturday 8th February at 2.00pm

Come and grab yourself a bargain, join us at The Old Basing Village Hall jumble sale! A wide range of items for all ages, plus tea, coffees and cakes.

Is it time to make room in some cupboards after Christmas? Does your garage need a declutter? We would be grateful for contributions to sell. We appreciate bric-a-brac, good quality clothing, gardening tools, books and toys! Unfortunately we can't take large items of furniture, but everything else, **YES PLEASE.**

Please leave your items in the outer porch from Monday, 3rd February through to noon on Saturday.

This is a fundraising event, helping to enable the volunteer committee to maintain our wonderful hall. If you would like to help on the day, with sorting or selling, we would love to see you there. **Sorters arrive at 10.00am, Sellers 1.45pm. Entry is 25p**

Laura Haystaff 07969 072230

OBVH Committee

CHILDREN'S SOCIETY BOX HOLDERS

Thank you very much for your kindness and generosity. Through your boxes last year you donated a total of **£852.73.**

The time of year has come again for your boxes to be handed in for counting. We will be contacting you in February to arrange a convenient time to collect your box. If it is more convenient for you to bring it to a service at **St Mary's Church** on **Sunday, 2nd** or **Sunday, 9th** February, please do so.

If anyone else is interested in holding a box at home for all those little bits of change which, when added up, make a real difference to children's lives, please contact us by telephone on **01256 355500.**

Rosemary Kershaw and Jacky Fox

RBL WOMEN'S SECTION

Thank you to everyone who attended our **Christmas Bazaar** back in November, this was a rousing success and raised over **£500.00** for the **Benevolent Fund.**

We always welcome new members, you do not have to have any association with the forces, anyone is eligible. We have an interesting programme for the year along with our fund raising events, as well as supporting the Poppy Appeal. We look forward to seeing you.

Sue Wilson

Publicity

Looking for independent financial advice you can trust?

We'll help you create, increase and protect your wealth. Our personal service is designed to build a shared understanding of your wealth objectives and to translate these ambitions into reality.

To find out more, please call

01276 34932

S4financial
SUPPORTING YOUR FINANCIAL LIFE



 01276 34932

 www.s4financial.co.uk

- * Family Wealth Preservation
- * Wealth Management
- * Tax Planning
- * Protection Planning
- * Retirement Planning
- * Mortgages

The value of investment can fall as well as rise. You may not get back what you invest. Your home may be repossessed if you do not keep up payments on your mortgage. There is normally a fee for advising on and/or arranging a mortgage, the precise amount will depend on your circumstances but we estimate that it will be £495.

R. LOVELOCK

HEATING & PLUMBING

ALL ASPECTS OF PLUMBING
INCLUDING

- BOILER FITTING • SERVICING & REPAIRS
- GENERAL PLUMBING

TEL: 01256 421138
MOB: 07383 064464
EMAIL: contact@rlovelockheating.co.uk

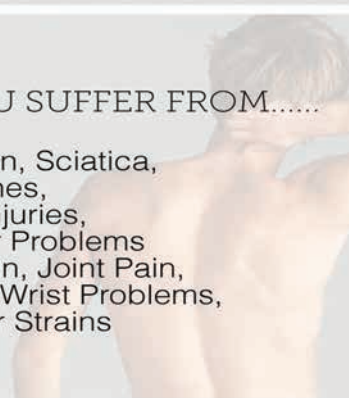


lsc
LOUISE SANDERS
OSTEOPATHS

Free car park
Emergency appointments
Home visits
Free advice on rehabilitation
Free advice on exercises
Free ergonomics advice

DO YOU SUFFER FROM.....

Back Pain, Sciatica,
Headaches,
Sports Injuries,
Shoulder Problems
Neck Pain, Joint Pain,
Elbow & Wrist Problems,
Muscular Strains



PJH

Window Cleaning Services

Local, reliable window cleaner

For a free, no obligation quote for

- Window cleaning • Facias
- Gutters • Conservatory Roofs

Please call Pete on

07762 616600

e-mail: [pihcleaning@gmail.com](mailto:pjhcleaning@gmail.com)

OLD BASING
Old Basing Health Centre,
Manor Lane
Old Basing | Hampshire | RG24 7AE
01256 868 370

CLASSIFIED ADVERTISEMENTS



Piano Lessons

All ages and abilities

Beginners welcome

Qualified and experienced teacher

Philippa Ford 01256 470174



PROFESSIONAL FOOT CARE IN THE COMFORT OF YOUR OWN HOME

Fay Curtis MCFHP MAFHP, fully qualified Foot Health Practitioner offers a range of foot services including:

Toenail cutting, Nail condition treatments, Corn removal, Callus reduction, Dry and cracked heel remedies, Verruca treatment and Diabetic foot care.

To book an appointment call

Fay on 07780 664410

Jane Stockdale

HOME COOKING FOR ALL OCCASIONS

SPECIALISING IN CAKES & CANAPES

Tel. 01252 723161 / Mob. 07775 696918

ADVERTISERS NEWS

We have vacant contract advertising space available for 2020, if you are interested contact the Advertising Manager on advertising@basinga.org.uk

Submissions to the magazine and website can be made via www.basinga.org.uk using the web forms:

Selection for Articles/Letters and Diary Dates will be found on the "Submissions" drop down and for Free and Concession Ads on the "Advertise with us" drop down. Paid advertising enquiries can also be made in the same way.

Submissions made via the forms now provide a common input for both the magazine and website and are automatically routed to the member of the team responsible for processing them. All submission must be received by the 10th of the month (6th in December) previous to the magazine issue month.

If you have trouble finding the forms, you can of course contact us and we will advise.

Our privacy Policy is available to read on the website which includes the new GDPR requirements for publishing photographs.

Contacts for general enquiries and assistance:

advertising@basinga.org.uk or editor@basinga.org.uk or webtech@basinga.org.uk

All Advertisements in the magazine and website are inserted in good faith and the Basinga Management Committee accepts no responsibility for any statement, omission or errors made by the advertisers; nor endorses the products or services advertised. The views and opinions expressed in the Basinga are those of the organisations, individuals and authors concerned and not necessarily those of the Basinga Management Committee.

brain chase coles

Solicitors

Look no further for your
local legal experts



www.brainchasecoles.co.uk

Tel: 01256 354481 | enquiries@brainchasecoles.co.uk

Property • Wills & Probate • Family Law • Family Mediation • Notary Public

Haymarket House, 20-24 Wote Street, Basingstoke, Hampshire RG21 7NL



R.KNIGHT
JCB & PLANT HIRE

All Ground Work Undertaken

Fencing & Tree Work

Tel: 01256 324588

Mobile: 07703 458372

Groundworks | Footings | Driveways | Landscaping

W.T.HILL
Painter & Decorator

Internal & External

Domestic & Commercial

Over 30 Years Experience

Tel: 07748808069/01256 467901

Free Quotations

GARDEN SOLUTIONS
NEIL INKLEY

SPECIALIST IN FENCING, TURFING,
PATIOS ALSO GENERAL GARDEN WORK
including Lawns, Hedges, Clearance,
and Pressure Cleaning

Local References Free Estimates

01256 882108 or 07768 105488

FREE ADS – BUY AND SELL

NO FREE ADS THIS MONTH

CONCESSION ADVERTS – WHAT'S ON

LADIES FIRST FRIDAY COFFEE MORNING: The next occasions will be at the home of Mrs Ann Price, 10 Olivers Walk, Lychpit on 7th February and then at the home of Mrs Sheila Stone 8, Norton Ride, Lychpit on 6th March. Both from 10.30a.m. to Noon. For more information contact Sheila Stone Tel. 01256 350238.

ST MARY'S FLOWER ARRANGERS COFFEE MORNING: Come along on Saturday 22nd February from 10 am until 12 noon in the Parish Room. Everyone welcome. There will be a raffle, bring-and-buy, tea, coffee and cakes.

GET SAFE / STAY SAFE ONLINE

Protect yourself from scam emails, text messages and social media posts. You know those emails that claim to be from your bank, parcel service, phone company or even the police? They always instruct you to take some kind of action – normally urgently – and give you a link or attachment to click on. Then there are the text messages and social media posts advertising free offers and bargains that seem too good to be true.

Usually, emails, texts and posts like this are sent by fraudsters who want to steal your money or identity ... or both. Some are very convincing and manage to deceive a lot of people. Make sure you don't fall into the same trap.

Top tips for protecting yourself against phishing

- Never reveal personal or financial data including usernames, passwords, PINs, memorable phrases or ID numbers.
- Be aware that sender email addresses can be spoofed to appear as if they're being sent by an organisation or person you know. Even these spoofed addresses can appear authentic when you mouse over/touch them.
- Always have internet security software loaded, switched on and kept updated on your computer. Download security Apps on all your mobile devices too, including Apple devices.
- Be very careful that people or organisations you're supplying payment card or other confidential information to are genuine, and then never reveal passwords.
- Remember that a genuine bank or other organisation will never ask you for your password via email, text, instant message or phone call.
- Don't readily click on links in emails, texts or posts/tweets from unknown sources, this could lead to viruses or your confidential information being compromised.
- Don't open email attachments from unknown sources, as they may cause your device to be infected with ransomware, spyware or other malware.
- Update software and Apps when prompted, including operating systems. These often contain security updates that could guard against malware.

The above information is taken from **www.getsafeonline.org** which contains free expert advice on all aspects of on-line security.

BEST OF FLOORING

Laying down a good reputation

Suppliers & Installers of:

- Wood Flooring
- Laminate Flooring
- Underfloor Heating
- Carpets & Vinyls
- Amtico

Home Sample Service Available
Free Estimates & Expert Advice

Unit 3 Cufaude Business Park,
Cufaude Lane, Bramley, Basingstoke, Hampshire RG26 5DL

Showroom Open Friday 10am-4pm, Saturday 10am-1pm

Tel: 01256 810327

www.bestofflooring.co.uk

Email: sales@bestofflooring.co.uk

Checkatrade.com



OVENCLEAN®
The original oven cleaning specialists

Non-Caustic Fresh Solution Used Every Time
Ovens ~ Hobs ~ Extractors
Microwaves ~ Aga's ~ Ranges Cleaned

FOR A FREE NO OBLIGATION
QUOTE PLEASE CALL

01276 473118 - 07882 886736
www.ovenclean.com



DESIGN & BUILD, PLANTING, DECKING, FENCING
TURFING, PATIOS, DRIVEWAYS & MAINTENANCE
FULLY INSURED & CRB CHECKED

CONTACT JONATHAN FOR A FREE QUOTATION

01256 412723 - 0771 7214521

E: info@jcooklandscapes.co.uk

www.jcooklandscapes.co.uk

B&M FENCING

GARDEN & LANDSCAPE SUPPLIES

- | | | |
|---------------------|----------------------|--------------------|
| • Panels (3' - 6') | • Reclaimed Sleepers | • Sharp Sand |
| • Trellis | • Softwood Sleepers | • Building Sand |
| • Concrete Post | • Oak Sleepers | • Ballast |
| • Closeboard Panels | • Decking | • Scalpings |
| • Natural Sandstone | • Rolawn Turf | • 10mm Gravel |
| • Paving Slabs | • Topsoil | • 20mm Gravel |
| • Block Paving | • Landscape Bark | • Decorative Stone |

Delivery Service Available

Mon-Fri
7.45 - 5pm
Sat 9am - 5pm

01256 762739

Fencing
Fitting Service
Free Estimates

www.bmfencing.co.uk

Reading Road, Hook, Hants, RG27 9DB

enquires@bmfencing.co.uk

CHINEHAM AND OLD BASING NWR

Do you argue with the TV, philosophise with the cat or disagree with the radio then come and talk with us – you will get more response and make friends. National Women's Register (NWR) is a relatively-unknown social group for women of any age to meet up for friendship and discussion. There are currently 6382 members in 380 local groups. **Chineham and Old Basing NWR** with 17 members meet at **2.00pm** on the **first Monday** of the month. Usually less than 10 make each meeting so we are able to meet in the relaxed atmosphere of someone's home.

In January we celebrated 60 years since the formation of NWR with a discussion on diamonds, and what women can do now which was not possible in 1960. We had a glass of prosecco and shared a few nibbles to help with the 60th (diamond) anniversary celebration.

Our **February meeting** is a discussion on **favourite foods and games from childhood**, whilst in **March** we will have an uplifting session of **singing popular songs together**. Singing can have some of the same effects as exercise, like the release of endorphins, which give the singer an overall "lifted" feeling and are associated with stress reduction.

We also meet at other times for lunch and ad hoc trips, as well as having a **Reading Group** meeting in the evening **every 4th Thursday**. The current book is the poignant **After You** by **Jo Jo Moyes**.

More information can be found via **www.nwr.org.uk** or contacting **Sandie** by email: **sandra.tapping@gmail.com** or by phoning **Karen** on **01256 328488**

Sandie Tapping

MARIE CURIE COLLECTION

Thank you very much for your generosity throughout last year. In March we raised a fantastic **£823.75** from the Chineham shoppers and again with the help of Tesco in December when we raised **£427.69**.

Marie Curie Care provides nursing for seriously ill people in their home; currently this is not available in Basingstoke but there is an interesting project which they are trialling along the M27 corridor to provide 24/7 care for those who do not have anyone at home to provide the basic care; it is hoped this will be tried in Basingstoke in the future. Marie Curie Care also provides funds for research into the best ways to provide end of life care which is shared with other organisations.

The **Great Daffodil Day** is the major fundraising event for the year. If you have an hour or more to spare between **Thursday, 13th February** and **Tuesday, 24th March** please call **Sophie** on **07798 638110** or visit **mariecurie.org.uk/daffodil** Thank you

Kathleen Manley

MUM'S WATCH

To the gentleman that found Mum's watch. We would just like to thank the gentleman who found Mum's watch on 23rd December and handed it in at the Co-op. It made our Christmas. Mum was very upset as the watch had huge sentimental value and thought it was gone for ever. **Thank you, the Woodward family.**



ST NICHOLAS' SCHOOL

FLEET • HAMPSHIRE

An independent day school for boys aged 3-7 and girls aged 3-16

- Small class sizes
- Inspirational teachers
- A caring, family ethos
- Purpose-built facilities
- Outstanding results
- 'Excellent' ISI Inspection
- School buses run from Alton, Bentley, Basingstoke, Bramley, Chineham, Hook, Old Basing, Odiham, Hartley Wintney, Fleet, Farnham, Rowledge, Yateley, Camberley, Farnborough and Aldershot

Open Mornings

Wednesday 5th February 2020
9.30am – 12.00pm

Saturday 7th March 2020
10.00am - 1.00pm

Year 7 Entrance Exams

10th January 2020



T. 01252 850121 | E. registrar@st-nicholas.hants.sch.uk

[@stnicholasschool](https://www.facebook.com/stnicholasschool) | [@stnicholasfleet](https://www.instagram.com/stnicholasfleet)

st-nicholas.hants.sch.uk

Looking for a Letting Service from an Agent who cares? You'll find us on The Street



all
aspects
LETTING
SERVICES

20% Discount with this advert

T: 01256 470411

69A The Street, Old Basing RG24 7BY
info@allaspectslettingservices.co.uk

Zoopla



PROPERTY MANAGEMENT • RELOCATION CONSULTANTS • INVENTORY SERVICES

VILLAGE CAFE

The Village Café, your local volunteer run community café, opens on **Friday afternoons** in the **Parish Room at St Mary's Church** from **2.00 to 4:30pm**.

The café is about supporting our local community and we would like to express our thanks to St Mary's Church for their continuing support of our venture. Without this support we would find it very difficult to continue to run the café and provide a weekly meeting place for our lovely customers.

A huge benefit of opening the café is the fact we are able to support local charities by donating all profits made. Our bakers are all volunteers who donate homemade cakes every week we are open so that we can continue to support these charities. Our most recent charitable donations went to Julian's House, a local homeless charity, and we are now raising funds to provide an AED (Automated External Defibrillator) for installation external to the church.

The café hosts pop up events from a couple of local business during the year, who donate a percentage of their takings per visit to our supported charity, and we anticipate another visit from the ever popular Alison's Wonderland in early March. We will confirm the date soon and publish on our Facebook page too. If there are any local crafters / businesses who would like to visit, we are always keen to hear from you so do get in touch. We anticipate a number of special events again this year so do watch this space for details.

One of our ideas is to plan an **Afternoon Tea** event, which may well be in **March**, and would enable customers to pop along to the pre bookable afternoon. This is currently in the planning stage and we will provide further details as soon as we are able. Although the café will be **closed on 14th February**, we will celebrate **Valentine's Day** the week before, with a few themed bakes so do come along and spread the love early! To remind you, the café will also be **closed on 21st February, 10th and 17th April**, these dates are school half term and Easter.

If anyone has a few hours to spare on Friday afternoon and would like to join our team of volunteers serving in the café, please get in touch, we are always keen to welcome new members. Contact: tel **07813 186328**, email **thevillagecafeoldbasing@gmail.com**.

OLD BASING ALLOTMENT AND GARDEN SOCIETY

This month the allotment shop will be **opening on Sunday, 9th and 23rd February** from **11.00am to noon**. If you haven't already done so, it is now time to renew your OBAGS membership which will give you access to the shop, toilet code and Suttons Seeds discount. It is a bargain at £5 and can be done during shop opening hours.

As long as we are not under snow, now is the time to be thinking about sowing a row of early peas and broad beans but be sure to use a hardy cultivar. February is also the best month to plant our garlic and shallots. The birds might pull some of them out so be sure to keep an eye out for this or protect with netting or string.

Top dressing your plot with a general fertiliser can be done now as can warming your soil with some black polythene ready for the next batch of sowing. Pruning of your soft fruit should be completed this month. **www.facebook.com/oldbasingallotments**

Tracy Braybrook

THANK YOU AND GOODBYE

They do say that if you want to make God laugh you tell him your plans. Since I last wrote this letter things have certainly not gone the way I anticipated. What started as a collection of family pressures ended up in a broken foot and an inability to drive. This means I have not been up at my beloved Crabtree Plantation at all. More seriously it means that I find myself unable to be minister to the Methodist Church in Old Basing. I am very sad about this as much has happened in the last few years to cause me to give thanks and I have relished the chance to meet so many lovely people.

Other provision has been made for the church and the Revd David Jenkins is going to keep a watchful and loving eye on this part of the world. He is a delightful man with an ability to remember people and care for them which is unparalleled in my experience.

Whilst I am sad, I am thankful. Three days after breaking my foot I became a grandma for the first time and I am relishing my new role. February will hopefully provide me with an opportunity to go lambing again, health permitting. New life in such a bleak, cold month of the year is an amazing reminder that our world is constantly being renewed. It gives me great hope!

Many of the psalms in the bible were written in bleak times, when the writer is feeling the pressure of opposition or loneliness. Even in such times there is a note of thanksgiving which rings true. At the moment Psalm 100 is my favourite psalm.

- 1 Shout for joy to the Lord, all the earth.
- 2 Worship the Lord with gladness;
come before him with joyful songs.
- 3 Know that the Lord is God.
It is he who made us, and we are his;
we are his people, the sheep of his pasture.
- 4 Enter his gates with thanksgiving
and his courts with praise;
give thanks to him and praise his name.
- 5 For the Lord is good and his love endures forever;
his faithfulness continues through all generations.



May you always know God's faithfulness and love,

Revd. Alison

THIS MONTH AT ST. MARY'S CHURCH

Saturday 1st February	Men's Breakfast, 8.45am in the Parish Room. If you fancy a full English breakfast do pop along to the Parish Room - you'd be most welcome (price: £4).
Sunday 2nd February	Candlemas, The Presentation of Jesus in the Temple, 9.30am.
Wednesdays	Lynsey's Little Stars, 10.00 to 11.15 am (term time only)
Thursday 20th February	Ploughman's Lunches, 12.30pm in the Parish Room. Come along, either on your own or with friends, to enjoy a delicious three course Ploughman's Lunch (price: £4)
Monday 24th February	Tea & Talk Café, 2.00pm in the Parish Room. All welcome, no charge.
Wednesday 26th	Ash Wednesday Service at 7.30pm

WE'D LIKE TO WELCOME YOU TO ST MARY'S

Everyone is welcome to join us for our **Sunday services** which take place every Sunday at **8.00am** and **9.30am**.

- There is a children's corner where young children can play and pray.
- During the 9:30 am service, Junior Church meets for primary school age children in the Parish Room.
- After the 9:30 am service refreshments are served in the Parish Room which is an informal setting in which to meet other members of the congregation. If you have time after the service do join us, you will be very welcome.

For more details about the life of St Mary's please visit **www.stmarysoldbasing.org.uk**
You can also find us on Facebook: **St Mary's Old Basing and Lychpit**. Full details of all services are available on St Mary's website and Facebook page



PARISH ROOM AT ST MARY'S - AVAILABLE TO HIRE

St Mary's Parish Room is a great venue for children's parties with a fully fitted kitchen and accessible toilets. Please get in touch with Debbie Filer, St. Mary's Church Administrator, email: **admin@stmarysoldbasing.org.uk** or telephone **07541 698235** for further details.

DID YOU KNOW?

If you live in Old Basing or Lychpit then:

- You may have your child baptised at St Mary's
- You may be married at St Mary's
- You may have a funeral service at St Mary's

OLD BASING METHODIST CHURCH

- Tuesday, February 4th** Craft group - from 2.00 to 4.00pm. Bring your own craft or items will be provided.
- Tuesday, February 11th** MHA Lunch Club followed by activities from noon until 3.00pm.
- Friday, February 14th** Coffee Break our monthly coffee morning from 10.30am until noon.
- Tuesday, February 18th** Craft group - from 2.00 to 4.00pm. Bring your own craft or items will be provided.
- Tuesday, February 25th** Time for Prayer and Reflection at 2.30 until 3.30pm.

Our regular **Sunday worship** starts at **10.30am**, coffee and tea are served after the service. Children are welcome into our junior church.

Our new minister is Revd. David Jenkins, details on the page 42.

Come and join us for worship, mid-week prayers, Coffee Break and Tuesday craft - a warm welcome awaits you.

CHURCHYARD CONSERVATION GROUP PIOCC

This month's working party will be on **Saturday, 1st February at 10.00am** – meet in the church lobby. There will be no Thursday afternoon working party this month. All are welcome. We look forward to seeing our regular volunteers and also new participants; we would love to see you.

This month we will continue our winter conservation tasks, pollarding a couple of the larger hazels to provide a succession of catkins and nuts, great dormouse food. At first they may look a bit bare, but they will quickly regrow. Britain's dormice population has already halved since 2000 mainly due to habitat loss. They need good quality hazel woodland habitat, traditionally managed by coppicing, so we hope our work will help our local dormice. Over the years we have seen two of these secretive mammals in the Conservation Area.

Churchyard Conservation is a community project, not just for churchgoers, so please come along if you would like to be involved. We will give you a warm welcome. Just turn up in gardening clothes and bring gloves. The tools are provided. Our Saturday morning sessions last about 3 hours (with a coffee break and chance to relax).

The Conservation Area is a community space for everyone to enjoy. You are very welcome to visit. With the longer days wonderful signs of spring are appearing. The snowdrops are now at their best. Together with the catkins and singing birds they herald the start of spring. It is a lovely time to visit. On a warm day the WI seat offers a quiet spot for a moment of peace in this busy world.

For further information please ring **Fay Farrant** on **01256 476863**.

Margaret Carr
www.stmarysoldbasing.org.uk

Berryford

Accountancy Services

Do you need an accountant?

We offer an accountancy service for small businesses and individuals

Year End Accounts
Bookkeeping
VAT and Tax
Personal Tax Returns

01256 472832 07790 948310

mike@berryford.co.uk

www.berryford.co.uk

A. SEWELL

www.asewell.co.uk



Lighting, Electrical & Audio Visual

All Lighting and Electrical work undertaken including:

- Security & Emergency Lighting
- Interior & Exterior Lighting Design & Installation
- TV, Telephone and Data Distribution
- Multi-room Audio/Visual
- Alarm Systems, CCTV & Door Access Systems
- Electrical Alterations & Re-wires



01256 329893

01252 844663



Home Maintenance Services

Family Business • Fully Insured • Free Quotations

References by Request • 25 Years' Experience

Jobs Undertaken

Fencing • Drylining/Studwalls • Painting/Decorating
Laminate Flooring • 2nd Fix Carpentry • Plumbing • Tiling
Fitting/Designing of Kitchens and Bathrooms

Marcus Underdown

Property Maintenance Expert

01256 479327 • 07878 078135

mtunderdown@virginmedia.com

"We do anything from changing a tap to refurbishing your bathroom"

OLD BASING VILLAGE HALL

*Whatever your function needs
your
Village Hall can meet them.*

Contact: Sandie Rice

Tel: 07544 289932

Email: bookings@oldbasingvillagehall.co.uk



A-Foardable Domestics

WE REPAIR....

Washing Machines, Cookers, Dishwashers, Fridge Freezers,
Ovens, Vacuum Cleaners & Tumble Dryers.

Repairing
Since 1995

Low
Pricing

Family
Run

Qualified
Engineers

Basingstoke
Based

Call: 07891 465499 | Email: afdomestics@engineer.com
Web: www.afdomestics.com

ST. MARY'S QUIZ NIGHT

It's Time To Dust Off The Little Grey Cells! The Friends of St Mary's are holding a **Quiz Night** to raise much needed funds for the restoration work at St. Mary's. The Quiz is being held on **Saturday, 22nd February** in The Parish Room; arrive at **7.00pm** ready to start 7.30pm. Each team is limited to six people and we are limited to twelve Teams. Please bring Your Own Refreshments. The cost is **£5** per person for members or **£7.50** per person for non-members. To buy tickets please telephone **01256 352403** and remember to ask about Membership!

Registered Charity Number 1051202

Kathleen Manley

WORLD DAY OF PRAYER

On **Friday, March 6th 2020 at 1.30pm** at **Old Basing Methodist Church** (RG24 7BY). An Interdenominational service open to all.

This year's country focus is Zimbabwe, and the title is 'Rise! Take Your Mat and Walk' taken from John 5 verses 2-3, 5-9a. Refreshments are available afterwards

Women, men and children of all ages are called to 'Rise, take your mat and walk' to join this day of prayer. Women of Zimbabwe have prepared this year's service and they encourage us all to reflect on the difficulties and unrest that have plagued their country over many years. They share the challenges they have met and the hopes they have for the future. They encourage us to 'Rise, take your mat and walk' with them as they continue their often turbulent journey towards full reconciliation

OLD BASING WI



Our January meeting was well attended. The Committee wishes to thank Sue Smith for preparing and running a craft activity for Members, which involved sewing a brooch out of cotton material and decorating with a button. All who took part really enjoyed themselves and the results were splendid! We also considered and voted on the WI National Resolutions for 2020 and the results will be passed up

to HQ to determine which national issues the WI will bring to the fore this year. Members also celebrated the New Year with a festive meal at The Bolton Arms.

Our next meeting on **Tuesday, 4th February** is entitled "**the Art of Stick Making**" by Mr Alan Frampton. The **competition** on that evening will be an "**Unusual Walking stick**". We will meet as usual at the **Parish Rooms** starting at **7.30pm**.

Other activities planned for this year include a visit to the Chineham incinerator, a skittles evening, a trip to the theatre and our regular lunches, walks and craft group meetings.

For further details please go to the Hampshire WI website at **www.hampshirewi.org.uk** Click on **WI's** from the top of the page and select **Old Basing** from the list.



Lisa Ives M.Ost PgCACE MSCCO
GOsC Registered Osteopath
01256 316566
07814 365523

Back & Neck Pain/Ache
Sporting Injuries
Muscular Strains & Ligament Sprains
Muscle Tension
Sciatica
Spasms
Neuralgia & Fibromyalgia
All Joint Pains
Arthritic & Rheumatic Pain
Structural & Cranial Osteopathy
Ultrasound & Dry Needling

Lisa Ives Osteopathy®

Grove House, Lutyens Close, Chineham Court,
Basingstoke, HAMPSHIRE, RG24 8AG.

www.lisaivesosteopathy.co.uk
enquiries@lisaivesosteopathy.co.uk



HeatOn
Gas & Heating Services™

Installation, Service, Repairs
Your local Gas & Heating Specialists

- Boiler & Heating Breakdowns
- Smart Control Upgrades
- Heating & Boiler Installations
- Servicing

Even the small jobs:
Repacing a Radiator, Thermostat
or just fixing a leak.

Telephone 07925 665636
customer.services@heatonghs.co.uk
www.heatonghs.co.uk



Checkatrade.com
Where reputation matters



BASING HOUSE RUINS AND GROUNDS

Plus museum, garden, activity trail, workshops,
outdoor theatre, special events and more!



THINGS TO DO

- Discover the Great Barn and spot the artillery damage still visible on its walls
- Explore the ruins and imagine what the house would have looked like
- Visit the walled garden and learn about Basing House's fascinating history in the museum
- Walk your dog or find a picnic spot

INFORMATION

Pay once, visit all year! With your ticket, you can enjoy unlimited visits to Basing House and return as many times as you like for a whole year! See our website for full details, admission prices and opening times.

Basing House is closed until the 13th April.

BASING HOUSE | Barton's Lane | Basingstoke | Hampshire RG24 8AE

Please call 01256 639550 or email basing.house@hampshireculturaltrust.org.uk



www.hampshireculture.org.uk/basing-house

Hampshire Cultural Trust is a registered charity (no. 1158583) and company (no. 08986225) in England and Wales.

NEWS FROM BASING HOUSE

The winter closure period continues at Basing House. We will be starting the “deep clean” of the outbuildings and museum ready for our spring opening very soon.

This year we will open the site on **Easter Monday, 13th April**, with a **Sealed Knot Living History** display among the ruins. We are very excited to be having two Sealed Knot events this year this one and a second larger event over the May Bank Holiday weekend.

But this does mean that the annual Sealed Knot event at Easter will be a scaled down version compared with those in other years, without the skirmishing and many of the soldiers, although these will be there in force at the May event.

We were also busy back in November planting tulip bulbs and we are planning to have a tulip festival in late April to add vibrancy and colour to the site. The delicate tulip was introduced to Britain in Tudor times so really is the most perfect flower for the once grand home of William Paulet – one of the longest lived and most influential commoners of Tudor times.

We continue to look for new volunteers – to help look after the extensive gardens, for general duties with visitors or even for just a few major events. Our volunteers are of all age groups and it is possible that younger volunteers could be taught roles which could help them get part time jobs in the future. If you are interested in helping, either contact me or **David Trevithick** at Milestones: david.trevithick@hampshireculturaltrust.org.uk or telephone him on **01256 639550**.

Further details for our spring opening week and events will follow in March. Unfortunately, some out-of-date material does still exist, so If you see anything that suggests a date earlier than Easter Monday it is wrong.

Andrew Howard (01256 327014)

AGE CONCERN HAMPSHIRE

Information morning for older people

This is a call to all older people, their carers and families. Age Concern Hampshire is holding an **Information Morning** on **Wednesday, 25th March, 10.00am to 1.00pm** at **St. Michael's Church Cottage**. There is a café on site, serving hot and cold drinks, light refreshments and meals. Please note there is no public parking on site

This is a great chance to find out about local and national organisations who work with older people in and around the town. This event is always very well attended and has a great buzz about it. This is what people had to say about the event last year:

'Its very good to have everything under one roof. I didn't know about some of these organisation before today'; 'I received useful advice about carbon monoxide detectors from Hampshire Fire'; 'I'd come along again, its been so helpful and everyone was so nice'

This will give you the opportunity to meet up, discuss and ask any questions you may have, so do pop along.

If you require more information then please contact the **Age Concern Basingstoke** office on **01256 423874**.

P.R. BRICKELL

7 Bexmoor Way, Old Basing



**All aspects of
carpentry work
undertaken**



FOR FREE ESTIMATES & ADVICE ON
KITCHEN FITTING, STAIR PARTS RE-
PLACEMENT, NEW DOORS FITTED, RE-
PAIRS TO ROTTEN TIMBER AND
FRAMES, WARDROBE FITTING, AND
GENERAL MAINTENANCE WORK,
NO JOB TOO SMALL

PLEASE PHONE
PETER ON 01256 355534

S. M. DECORATORS

*Interior & Exterior
Prompt & Efficient Service
Competitive Prices
Fully Insured Company
Over 25 Years Experience
Skim Plastering and
Paperhanging Specialists
City & Guilds Qualified
All Work Guaranteed
For Your
Free Estimate Or Advice
Please call Steve on
01256 811929*

HORIZON SOUND & VISION

Family Run Business Est 1988

- **Aerial & Dish Installations**
Freeview, Freesat, Sky & European
- **Freeview, Sky or Freesat on additional TVs**
Magic Eye control & HD. Phone & Ethernet points.
- **TV Wall Installation**
Free site survey. System planning. Hidden cabling
- **Tuning & set up of your equipment**
*Cable tidying
Weak/low signal improvement*
- **WiFi Signal Improvement & Network Cabling**

- **CCTV Installations**

- **Audio & Speaker Systems**
Home, Outdoor & Workplace



Checkatrade.com
Where reputation matters

01256 841860

Visit us at Essex Road Basingstoke
www.horizonsatellites.co.uk info@horizonsatellites.co.uk



Over 35 years experience in all
types of domestic, commercial and
industrial fencing

FREE estimates and advice with
no obligation and good quality
workmanship are **GUARANTEED**

CALL US 01256 358 940
www.fencing-in-basingstoke.co.uk

PC Doctor (Hampshire) Ltd

Andy Pearce 01256 841204



Home & Small Business PC's/printers supplied.
PC repairs & upgrades, Laptops & Desktops.
Wireless networking. Virus & Malware removal.
New PC & Tablet setup.
Data & Email Transfer from old system.
pcdoc.hampshire@btinternet.com

BASINGSTOKE CIVIL SERVICE RETIREMENT FELLOWSHIP

At the first meeting of 2020 held on Wednesday 8th January the chairman, David Cowling, welcomed 44 members and 1 visitor in what is the Basingstoke Fellowship's 50th year. The secretary, Tony Brazier, gave details of the forthcoming trips and the Welfare Officer, Christine Broadbent, then gave her update on members who had not been well and also announced the sad news that Stella Bone had died just before Christmas aged 98.

The speaker this month was Barbara Cummings who since her last visit to us had undertaken cycling tours of the beautiful Indian State of Kerala, Morocco, including the Sahara Desert, and the West Coast of America, from Seattle to San Francisco. She showed us some of the many photographs she had taken and regaled us with details of some of the more uncomfortable parts of the trips (a ride on a camel in the desert for instance) along with descriptions of some of the more colourful characters she had met. In India particularly she was invited into people's homes sharing experiences and stories while in America it was the personalities she met at campsites who were the most interesting and unusual. We look forward to hearing from her again after her next journeys.

The group's next outings are on **Thursday, 13th February** to **Bletchley Park** and then on **Wednesday, 25th March** to **Dorney Court**.

The **next meeting** is on **Wednesday, 5th February** when the speaker will be Allen Purkiss a former traffic policeman with a talk titled "**Thrill and Spills**". The group meets on the first Wednesday of each month at **Brookvale Village Hall** from **10.00am to noon** and all retired Civil Servants, relatives and friends are welcome. For details about the group and information about our trips can be obtained by contacting **csrfbasingstoke@gmail.com**.

David Cowling

BASINGSTOKE AND DISTRICT RAILWAY SOCIETY



Railway Society

An important part of the current railway scene will be the subject of a presentation by Maggie Simpson, Managing Director of the Rail Freight Group, on **The Future of Rail Freight** at our **meeting** at **7.45pm** on **Wednesday, 12th February**. Despite the recent loss of coal traffic, there are still substantial flows of freight on Britain's railways. Maggie will give us an insider view on the trends, opportunities and challenges affecting rail freight on today's crowded rail network

The second **meeting** of the month, at **7.45pm** on **Wednesday, 26th February**, will take a more nostalgic look at the rail scene when Ian Clare will present **An Evening of Commercial Cine Films of Steam Trains**. These will include 'Fully Fitted Freight', the 4.48pm Bristol to Leeds fast in 1967, 'Thunder Steam Blue Ridge' from the USA, 'Power to Order', featuring steam locomotive construction at Doncaster Works and 'Hof Pacifics' showing German steam in action.

Our meetings are held at **The Wote Street Club** in **New Road in Basingstoke** town centre. We welcome new members to the Society and are always pleased to see non-members at our meetings. Why not join us? More information about the Society, membership and our programme of meetings can be found on our website at **www.bdrs70d.com** or telephone **01256 331002**.

Tony Wright



24hr Airport Transfers

Professional Door to Door Service

"Reliable, friendly transport solutions from a local company you can trust"

07747 771906

www.basingstokeairports.co.uk

Departures



- IMPLANTS •DENTURES
- CROWNS & BRIDGES
- HYGIENE •WHITENING

New patients are welcome

Implant Dental Centre
Denture Studio
and Dental Laboratory

Fabio and Kat have moved to their new Dental Centre

Call for a free of charge consultation



The Loddon Business Centre,
Unit Q, Roentgen Road, Basingstoke, RG24 8NG
www.italdent.co.uk tel. 01256 355 268

Lee Quinlan



Kitchen

&



Bathroom Fitter

You buy it and I'll fit it!

"One stop" service for accompanying:
Plumbing, Tiling, Plastering,
Flooring & Woodworking

Electrical Work



01256 811830

email: enquiry@leequinlan.co.uk
web: www.leequinlan.co.uk



WESTPORT GREY

BUILDING CONTRACTORS

01256 636511

Extensions | Loft Conversions | Renovations | New Builds



WWW.WESTPORTGREY.CO.UK

Westport Grey Ltd. - Registered in England - No. 6216684

BUILDING YOUR DREAMS

VOLUNTEERS IN OUR COMMUNITY

We are looking for Volunteers in your Community. Could you become a 'Befriender'?

What will you be doing?

As a Volunteer Befriender your role will be to provide social companionship to patients who have a chronic or life limiting illness and who are isolated or lonely. Visiting patients in their own homes, you will help them to feel more supported and help to improve their emotional well-being and confidence.

How much time do you need to commit?

Just two hours a week, or less, can make a real difference to a patient living in your local community.

What support will you be given?

All relevant training will be given, as well as regular and on-going support and supervision.

Interested?

Interested volunteers will be invited to an informal interview and the role is subject to references, simple health checks and DBS clearance.

For further information contact **Caroline Nash**, Befriending Manager: **01264 835293**
email: **Caroline.Nash@hhft.nhs.uk**

BASINGSTOKE BLUES CLUB

in association with the Basingstoke Railway Social Club, Station Approach, Basingstoke,
The Basingstoke Blues Club presents, on Saturday 15th February, **Catfish**

Internationally acclaimed Blues Award winning band Catfish have a reputation as an excellent live band with a phenomenal frontman in 24 year-old guitarist/vocalist Matt Long who plays with a real passion for the blues. Over three years they received five nominations in the British Blues Awards and have also been awarded a UK Blues Award as Blues Act of the Year. Their albums have received nominations and awards too. Don't miss this chance to see them!!

All welcome - 8pm till late. £8 on the door. Licensed bar and Low Prices. All profits to Brain Tumour Research – Charity number 1153487.

BASINGSTOKE LIONS CLUB



On **Saturday, 22nd February**, during half term, between **9.00am** and **4.00pm**, **LENNIE**, the loved and loving Basingstoke Lions Club's mascot, will be residing in and around his 'lair' in Old Basing Mall, along with some of his friends from the Club. Usually only seen by chance at a fête, fayre or supermarket where he may be cheerily relieving you of any very welcome

donation to the many causes the Club supports, this is a day when a gentle hug, cuddle or 'hi-five' would be very likely (but he'd still relieve you of those donations should you feel the urge to offer!). In addition, children can become '**Little Lions**', as the renowned local **face-painter Kiri** will, between hours of **11.00am** and **3.00pm** and for a small fee, send them away with leonine faces!

Trusted since 1802
HENLEY-ON-THAMES | MARLOW | BASINGSTOKE

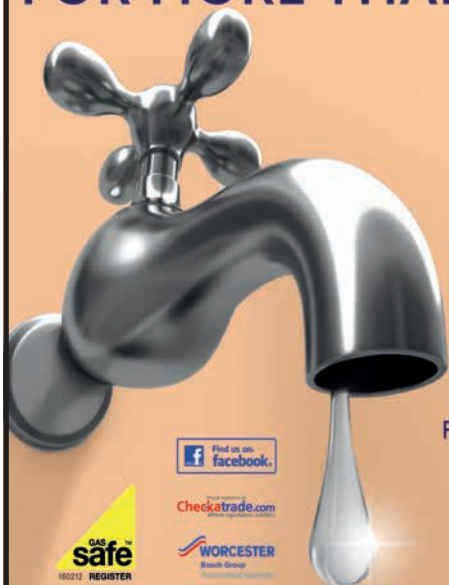


sales • lettings & management • commercial • development • rural

Residential Sales - **01256 840077** Lettings - **01256 337100**

www.simmonsandsons.com • 12 Wote Street, Basingstoke, Hants RG21 7NW

FOR MORE THAN JUST A LEAKY TAP



Niall Catlin
PLUMBING & HEATING

EST 1991

Leaky taps to full bathroom installation
Power flushing | Water softeners | Hot water cylinders

Boiler breakdowns, repair and servicing
Boiler replacement | All allied trades
All aspects of plumbing and heating



Checkatrade.com

WORCESTER
Bosch Group



www.niallcatlin.co.uk

01256 818086 | 07774 741021

Serving Basingstoke for over 35 Years



Showroom

The old Station Andover Rd
Oakley Basingstoke RG23 7HA

Tel: (01256) 782070

OPEN 9am - 5pm MONDAY - FRIDAY CLOSED WEDNESDAY

SATURDAY 10am - 4pm

**VINYL, WOOD, CARPETS, LAMINATE,
FURNITURE FOR THE DINING ROOM, LOUNGE, BEDROOM
AND STUDY**

**Range of Accessories and
Hand Made Jewellery.**

www.oakley-furnishing.co.uk

**CARPET EDGING SERVICE
ALSO AVAILABLE**

Rugs Made Your size

Many Items in stock for Fast Free Delivery



British made Beds Back on Show Free Delivery Approx 1 week



LODDON
WINDOWS & DOORS

Local Family Run Business Established for over 35 years



GREAT RANGE INCLUDING:

Conservatories | Windows | Aluminium Bi-fold Doors | Composite Doors

- ✓ Quality UPVC Windows and Conservatories
- ✓ Attention to Detail - Local Recommendations
- ✓ Competitive Prices - Free Quotations
- ✓ 10 Year Guarantee - FENSA Registered

Tel: 0118 9815440 | 01256 464304 (evenings) | 07831 200613 (mobile) | www.loddonwindows.co.uk

FEBRUARY IN YOUR GARDEN

As the winter has been very mild so far (written on 10th January), one could be forgiven in thinking that one month is very much the same as the next and, in terms of gardening jobs, there is little difference between January and February. If you are behind with jobs from last month, you ought to still have time to complete them. That's what I tell myself anyway!

An interesting tip I was given in regard to growing Tomatoes is to search for Crimean varieties, such as 'Black Krim.' Not only do they taste superb, most Tomato varieties are grown for warmer climates, whereas the South Ukraine has a similar climate to our own, allowing them to grow better in cooler conditions, and in theory, crop longer.

A last chance warning: now is the last month you can sow garlic. To form good cloves it needs to spend ten consecutive days at a temperature below 10°C (50°F). You can of course place them in a fridge if you so desire.

Continue to prepare beds for planting. Those that have been completed can have black sheeting put over the top of them to keep them warmer and drier for springtime. Another advantage is that as the soil warms, weeds will start to grow, giving you a clean crack at the whip of removing them before anything is planted.

If you are looking for an easy crop to grow, that crops in winter when little else grows, gives fantastic flowers and tastes fantastic, then look at growing Jerusalem Artichokes. They are related to the sunflower family rather than Globe Artichokes, they grow in most soils and are the definition of plant and forget! The tubers make a fantastic soup.

I don't know why but when I think of Artichokes I also think of Asparagus. Now is a good time to start preparing the site where they are to grow, ensuring the ground has been dug thoroughly and weed free. It is also a good time to order the Asparagus crowns even though delivery may not be until late March or early April.

If the ground is not frozen cane fruits can be planted now. Blueberry and gooseberry plants may be stirring into life; check the soil isn't too sodden or bone dry, especially container plants. Blackcurrant bushes should be inspected for swollen buds, caused by big bud mite, and disposed of.

Protect the blossoms of fruiting trees should they flower early again this year. Peach and Apricot are notoriously early anyway, and may need hand pollinating as there little else to do it for you! I also hand pollinate my pear trees, as they can also blossom before the bees.

If you are planning to grow climbing French or Runner beans this year, give them the best start by digging a trench where you plan to grow, lining with shredded newspaper and filling with kitchen waste (vegetable peelings, uncooked fruit and vegetables, tea bags, but not cooked meats, bones, cheese or milk) and back fill with soil. This gives the beans a much-needed nitrogen boost come summer.

With regards to lawns you can brush off any worm casts with a stiff broom, besom or rake and now, and so it's ready for its first cut, now is an opportune time to get your lawnmower serviced. If you're planning on sowing a new lawn, weeds growing on areas of ground prepared for grass seed sowing should be brought under control before sowing begins in April.

Next month the garden really starts to get going, so any preparation work that can be done now will save time later. It may be cold and miserable you will thank yourself for the effort.

NATURE NOTES FOR FEBRUARY

Apparently, the days are each getting longer now by a couple of seconds so in the time it took you to read this sentence you used it up! But seriously, as soon as January is through, I personally really start believing its Spring even though the worst weather is probably still to come. Certainly, there are some very clear signs of the next season with numerous bulbs peeping through, buds on numerous trees and in Oliver's Walk some Snowdrops came into bloom in the garden of Ann and Michael Price on December 30th, a sight to surely gladden the heart.

Though as I write (8th January) there hasn't been a huge amount of rain in the past fortnight what had fallen previously is still coming off the fields in vast quantities into the ditches and streams. The Loddon and its tributaries therefore have a very healthy flow which helps to flush some of the dead leaves and debris that built up over the dry summer. Regardless, we need to give some places a helping hand so myself and a couple more able (?) bodied people are going to get stuck into the streams around the viaduct area. If anyone would like to assist us, probably for a couple of hours on a Sunday morning then please ring or email me.

The reason this is important is because we are fortunate enough to have chalk streams here with gravel beds but years of neglect and extraction have left many brooks clogged with 'our' rubbish, sticks and mud. The impact is no spawning trout or sticklebacks, no likelihood of indigenous crayfish, no freshwater shrimps which all equal poor conditions for kingfishers, moorhens, coots, ducks or voles. Reducing the number of places mink can hide away would also be a step in the right direction.

By the time you read this we will have hopefully started so ramblers amongst you might begin to see some differences.

Lack of fishing in these places also drives Herons into gardens as anyone with a pond will testify so when Phil Males spotted one gazing into his on several occasions before Christmas he said, 'Good luck mate, there aren't any fish'. However, Phil is my main 'frog spawn reporter' so we think the grey one was perhaps seeking out hibernating amphibians around the nooks and crannies of the pond.

Equally bold, or perhaps lost, was the muntjac that ran beside my car under The



Street bridge on Christmas Eve. It tried to duck onto the railway embankment but couldn't so headed back in a panic toward the church and through the parked traffic, probably ending up in the old cemetery. I know for sure they frequent there as several cyclamen plants on our parents' graves have been neatly nibbled!

Recent spots include a cheeky little mouse in a peanut feeder in Pete Wooldridge's garden, Blackcaps in the gardens of Stephen Thair in Park Lane and of our neighbours Martin and Claire here in Cavalier Road.

Jim Andrews sent me a cracking photo yesterday of a Kingfisher perched by the Loddon on an overhanging branch; this photograph is on the cover of this magazine.

Don't forget to send all your nature related photos to rickbourne@yahoo.com

or naturenotes@basinga.org.uk or ring **01256 321108** for news. For all your bird food requirements, order it from me at 'Bird Drop-ins' use the former email address or ring me on **07900 648675** to place an order or get a form.



Rick Bourne

THE MILLFIELD CONSERVATION GROUP



Event News

Our work party on **Sunday, 23rd February** will continue to cut back the scrub to create the open spaces which are so important for our wildlife. We have made good progress so far this winter but there is always more to do. You don't need to book in advance just come along on the day, the more the merrier. No special skills are required either just wear appropriate clothes and footwear and we will provide tea, coffee and tools. We meet and will be working on the lower path (next to the woods) from **10.00am** and work for about **two hours**.

What's around this month

Look out for Winter Finches, particularly larger numbers of Siskins, Bramblings and Redpolls, in particular see if you can spot the Meally Redpoll which is slightly bigger than the normal Redpoll. We should also be seeing the Winter Thrushes such as the Fieldfare, large numbers of Linnets will be roosting in the field too and the Waxwings should still be around. This winter we have had good numbers of Little Egrets coming in both on-site and around the fish ponds by the barn where the Yellowhammer maybe roosting amongst the reed beds and Kingfishers are seen regularly.

Remember we now have a **Facebook** page, search for "**Mill Field Conservation Group**", there you will find posted events, photos of wildlife and other information will be shared.

Anne Francis

Telephone: **07974 944439**

Email: millfieldoldbasing@yahoo.co.uk

Facebook: **Mill Field Conservation Group**

DIARY DATES FOR FEBRUARY

For details of services and events at St Mary's Church and Old Basing Methodist Church see pages 23 and 24.

Sat 1	10.00am – 1.00pm	PIOCC Churchyard Conservation. Meet in Lobby.
Sun 2	9.30am	The Children's Society Box Holders to St. Mary's Church
Tue 4	7.30pm	Old Basing WI - The Art of Stick Making. Parish Room
Thu 6	7.45pm / 8.00pm	RBL Branch meeting in the Jack Morris Hall. RBL
Fri 7	10.30am noon	Ladies First Friday Coffee Morning. 10 Oliver's Walk
	2.00pm – 4.30pm	Village Cafe, Parish Room, St. Mary's Church.
Sat 8	2.00pm	Old Basing Village Hall Jumble Sale
Sun 9	9.30am	The Children's Society Box Holders to St. Mary's Church
	11.00am – noon	OBAGS Shop opening in Riley Lane.
Mon 10	6.00pm	LAST DATE FOR COPY TO EDITOR - see page 3
	7.45pm	BDRS talk - The Future of Rail Freight, Wote St. Club
Thu 13	9.00am	Marie Curie Collection, Great Daffodil Day. See page 19
Sat 15	8.00pm – late	Catfish at the Basingstoke Blues Club, RG21 5NB
Sat 22	9.00am – 4.00pm	Basingstoke Lions Club. Lennie Love-in. See p32
	10.00am – noon	Flower Arrangers Coffee Morning, Parish Room
	7.00pm	Friends of St. Mary's Quiz night. Parish Room.
Sun 23	10.00am – noon	The Millfield Conservation Group, Working Party.
	11.00am – noon	OBAGS Shop opening in Riley Lane, opp Bolton Arms
Wed 26	7.45pm	BDRS talk - Evening of Commercial Cine Films, Wote St.
Thu 27	7.30pm	RBL Women's Section. Tea and Chat, Unusual Watch.
Fri 28	2.00pm – 4.30pm	Village Cafe, Parish Room, St. Mary's Church.

BASINGA EXTRA

*There are a number of articles of interest that we can't find room for this month. They are, however, available on-line on our website, **Basinga Extra**, www.basinga.org.uk*

Homeless Charities Launch The Big Basingstoke Sleep-Out
Basingstoke Lions Club - full article

This months Discovery Centre's activities can be found in the Forthcoming Events Feature.

- Loft ladders & loft hatches
- Boarding, lighting & insulation



CREATING SPACE THE EASY WAY!

HUGE BENEFITS

- De-clutter your home
- Create up to a third more space
- Gain safe & easy loft access
- No mess, no fuss, no subcontractors

Call now to book a FREE survey & quotation

01256 688648



WWW.ACCESS4LOFTS.CO.UK



Now open in Belle Vue Rd

Old Basing.

Hairdressing for the whole family.

01256 357333



BLUE WILLOW COACHING

Career and Life Coaching

- Do you feel stuck in your professional life and need support to work out - what's the right way to go?
- Do you want to learn how to challenge your "inner critic" and build your emotional resilience?
- Do you want to increase your confidence and presence?
- Do you want to get in touch with who you are and what you truly want to do?

Siobhain Whitty is a professionally trained executive and life coach, certified with the International Coach Federation and Academy of Executive Coaching.

Book a FREE 30 minute, no obligation sample session

Contact Siobhain at:

info@bluewillowcoaching.co.uk

www.bluewillowcoaching.co.uk

07894 209 698

Conversations with a purpose

M.C.PEGG

Plumbing, Heating & Gas Services

Local & Reliable

All Plumbing and Heating Installations

Gas Safe Registered - 195010

Bathroom Suites/showers

Gas Safety Certificates

Boilers, Hot Water Tanks,

Heating systems,

Servicing

FREE ESTIMATES



Tel: 01256 308462

Mob: 07973 217020

Email: matthew.pegg1@btinternet.com

Spencer & Peyton Ltd

Established 1961

3rd Generation family owned and run Funeral Directors and Monumental Masons

24 Hours

Our family serving your family for over 55 years

380 Worting Road Basingstoke, RG22 5DZ

01256 323165

(Flower Girl Florist on site)

7 London Road Hook, RG27 9DY

01256 761717

Trading Standards approved

Pre-paid funeral plans discussed without obligation

spencerandpeyton@btconnect.com

www.spencerandpeyton.co.uk



10
YEAR
GUARANTEE



NJP Heating Services

0% finance

on all Worcester Bosch boilers

complete with up to 10 year guarantees on all
Worcester Bosch boilers and controls

Contact us today for your free quote

**07717 741999 or
01256 782202**

nick@njpheating.com | njpheating.com



Basing Pedicare

Fully qualified mobile Foot Health Practitioner

- Toe Nail Cutting
- Corn And Callus Management
- Diabetic Foot Management
- Verruca Care



Contact

Malinda Snook MCFHP MAHP
to make your appointment-
I visit you in your home!

07751 474322

The Complete Tree Service

- Residential & commercial work
- Tree removal, thinning & lifting
- Stump removal, scrub clearance & hedge trimming

Over 25 years experience -
fully trained, insured & certified.

We guarantee we can help.
Call for professional, friendly advice.



Teams all over Hampshire, Surrey,
Sussex and the South:

01256 763 162

www.cedardale.co.uk

Checkatrade.com
Where reputation matters



Prime Improvements
Home & Garden

07841 532 878

Painting & Decorating
Handyman Jobs
Tiling
Flooring

Grass & Hedge cutting
Garden Clearance
Fencing & Decking
Sheds & Cabins

www.primeimprovements.co.uk



High quality and friendly MSK,
Back Pain and Neck Pain service
with professionals who listen

Annette and Gordon Linscott

35 Years in Basingstoke
Now on your doorstep

East Barn, Lychpit Centre
01256 466 666



www.spineteam.co.uk



Funds raised in our shops support the hospital and its activities.

- We are please to receive good quality donations.
- Come and visit us in Old Basing.
- Volunteer enquiries to work in the shop are welcomed.

**We are open 10.00am to 4.00pm
Monday to Saturday.**

At 42 Belle Vue Road

**Our other shops are in:
Hartley Wintney - Millbank House, High Street
Odiham - 71 High Street**



SERVING THE PEOPLE OF BASINGSTOKE & NORTH HAMPSHIRE SINCE 1968

**FINANCE
NOW
AVAILABLE**

Please ask
for details

**DESIGN,
SALES & FULL
INSTALLATION
SERVICE**

01256 363123 | twoguys.co.uk



ARMSTRONG ROAD, DANESHILL EAST, BASINGSTOKE, HAMPSHIRE RG24 8NU

● BASINGA

EDITOR: Colin Follett, 101 The Street, Old Basing, RG24 7DA 01256 326909

ADVERTISING: Email: advertising@basinga.org.uk

SECRETARY: Graham Merry, 40 Linden Avenue, Old Basing, RG24 7HS 01256 463908

TREASURER: Andy Groves, 30 Pyotts Copse, Old Basing, RG24 8WE 07918 644187

DISTRIBUTION:

Old Basing Area: Peter Watson, 19 Priory Gardens, Old Basing, RG24 7DS 01256 352299

Lychpit Area: Andree McLean, 6 Pimpernel Way, Lychpit, RG24 8SS 01256 819006

WEBMASTER: Brian Baker; email: webtech@basinga.org.uk 07955 743579

● OLD BASING & LYCHPIT PARISH COUNCIL

CLERK: Sandra Tuck 01256 462847

OFFICE AND HOURS: The Pavilion, The Recreation Ground

Monday to Thursday 10.00am to noon

● CHURCH INFORMATION FOR THE AREA

Church of England (Parish of Old Basing & Lychpit)

VICAR: Revd. Heather Leppard, The Vicarage, Church Lane, Old Basing 01256 363612

Email: vicar@stmarysoldbasing.org.uk 07745 731729

ADMINISTRATOR: Debbie Filer 07541 698235

CHURCHWARDENS: Tricia Renwick 01256 326155

Ian Kershaw 01256 355500

Regular Services at St Mary's Church, Old Basing

SUNDAY: 8am Holy Communion; 9.30am Sung Eucharist and Junior Church;
5.30pm Evening Service

OTHER DAYS: Wednesday 10am Holy Communion

*Changes to the regular service pattern and other weekday services are shown
in the weekly news-sheet, a copy of which is displayed on the noticeboard in
the church porch*

Old Basing Methodist Church

MINISTER: Revd. David Jenkins 01183271592

07973195566

SUNDAY SERVICE: 10.30am Morning Service

Roman Catholic

PRIEST: Fr Christopher Rutledge 01256 465214

St Bede's Church, Popley Way, Basingstoke

SUNDAY MASSES: 9am, 11am and 6.30pm

need a **painter** and **decorator**?

- professional
- friendly
- affordable



- experienced
- reliable
- fully insured

call us today for a free no obligation quote
01256 334852 07919 358050
pscdecoratingservices@gmail.com

Infinite Harmony Hatha Yoga

4 classes to choose from:

Gentle Chair Yoga

If you have mobility/injury concerns then this is the class for you. All yoga is done on a chair and using props.

Monday's

14.00 - 15.00
 Lychpit
 Community Hall

Relax Yoga

This class is for all levels of ability and uses postures to help you relax and deepen your yoga practice.

Tuesday's

19.15 - 20.15
 St Mary's
 Church Hall,
 Old Basing

Sunday Morning Yoga

This class is for all levels of ability and focuses on strength and flexibility.

Sunday's

09.15 - 10.15
 Lychpit
 Community Hall

Sunday Night Satsang

This is deep relaxation yoga. You will be led through a series of gentle yoga postures followed by an extended guided meditation.

1st Sunday

of the month
 18.30 - 19.30
 Lychpit
 Community Hall



Contact Vicky on 01256 910108 or
 email vicky@infiniteharmony.co.uk
 Don't forget to book your space.



For more information visit www.infiniteharmony.co.uk



01256 763859

07766 256788

TreeSceneArb@gmail.com



Adrian Stanley
 BSc(Hon) AA Tech Cert

Qualified & experienced
 arborist

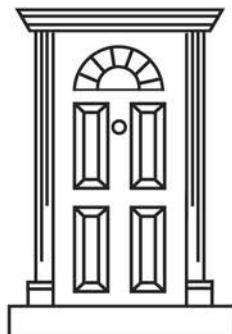
- All aspects of tree work & stump grinding
- Fully insured (£5m) - free estimates
- Logs supplied

Basing Electrical Ltd

For all your electrical needs.
 Both in and outside your home.

Part P Approved NIC EIC Registered.

Call John on 07793748360



DAVID MATTHEWS

Carpentry & Joinery Services

Chineham, Basingstoke. Tel: 01256 476207

- ❖ Doors ❖ Wardrobes ❖ Kitchen Design Service
- ❖ Custom Made Units



Spa Days from £59

Indulge in a day of tranquillity, relaxing in our beautiful Sanctuary spa with a variety of thermal experiences, drift away in our luxurious pool, unwind in your exclusive spa day lounge and complete your day feeling refreshed and revitalised.

Visit our website to learn more or call today to book your Spa Day Experience.



☎ 01256 36 22 22 🖱 [beechdown.co.uk](https://www.beechdown.co.uk)

📍 Beechdown Beauty & Day Spa
Winchester Rd, Basingstoke RG22 4ES