

January 2020

BASINGA



Tina Maria Keen



Old Basing and Lychpit Parish Magazine
www.basinga.org.uk

Proud to be supporting businesses and organisations in the Basingstoke and surrounding areas for 22 years



Your local one-stop provider of professional marketing & design support and graphic communication materials.



ISO12647



Trusted
Business

100%

of customers surveyed would
recommend Greenhouse

greenhouse
Marketing | Design | Production

Call 01256 880770 www.greenhousegraphics.co.uk

JANUARY NOTES AND NEWS

The cover photograph this month is of some of the wonderful volunteers at **The Village Café** (photo by **Tina Maria Keen**). The café is open on Friday afternoons in the Parish Room at St Mary's Church – full opening details are on our Facebook page. Homemade cakes are our speciality and we donate all profits made to charity. See also page 35.

CONTRIBUTIONS TO THE BASINGA

We welcome both regular and occasional items for the Basinga. The very last date for copy to the Editor for the **February edition** is **6 pm on Friday, 10th January**. Please use the forms on the Basinga website: **www.basinga.org.uk** to get your dates, articles and letters to us (see box on page 15 for further instructions). All **advertising** enquiries – classified, free adverts or inserts (flyers) can also be made via the Basinga website. Don't forget that we only accept articles with about a **300 word maximum**.

PHOTOS FOR THE BASINGA

If any reader would like to offer a **photograph of the village environment** we would be happy to receive them, either for immediate use, as above, or to build up a portfolio of 'village views' that we can use when appropriate. We now have a web form that you can use to send a photograph for the website archive and possible use in the magazine. Go to **www.basinga.org.uk** and the form can be found on the '**Contributors Submission**' drop-down menu. Should you wish to submit multiple or a series of photos they can be emailed but please read the instructions on the photo form for details. This feature should **NOT** be used for Free Ads or Article photos, which can be attached to their own forms.

LOGOS FOR THE BASINGA

We are making changes to the presentation of the Basinga and would welcome **club** and **society logos**, with the option to use them within articles. Please send via the **Editor**.

BASINGA DELIVERERS NEEDED

The **Basinga** requires local **deliverers** of the Basinga in Old Basing, specifically in the **London Road** area, either side of **Hatch Lane** and **Huish Lane**. It's not an arduous task and requires less than an hour a month to deliver the magazine in your local area. If you are interested please email: **basing@basinga.org.uk** or tel. **01256 352299** or **07790 279954**.

LETTER TO THE EDITOR

*Stagecoach have announced that from 1st December 2019, **Bus Service 7** will run half hourly via Lychpit on evenings and Sundays. With the two-hourly weekday service on **Route 14** being unchanged, Lychpit now has a four times more frequent service on evenings and Sundays than on weekdays! Stagecoach also state that there are some timetable changes to Route 7 to improve punctuality. There is no mention of Route 14 – presumably they've given up trying to improve punctuality on this service.*

Geoffrey Rhodes

OLD BASING & LYCHPIT VILLAGE SHOW

The Committee for the **Village Show** wish all readers of the Basinga a very happy New Year. Don't forget this year's Show is on **Sunday, 6th September**, in **Old Basing Village Hall** as usual. So start the year with a resolution to enter this year's Show if you haven't entered before and, if you have entered previously make every effort to win a cup this year.

CARNIVAL NEWS

Great news, on behalf of Old Basing Carnival Committee, I am very pleased to announce that following a number of the local community coming forward that it looks like the Carnival will have a future post 2020! There are still a few things to work through and ensure all aspects are covered, however the new committee members that have come forward will hopefully enable the Carnival to continue after the 50th Carnival and so the legacy will continue. The theme for the **50th anniversary Carnival** on **Saturday, 20th June, 2020**, is "**50 Golden Years – anything goes**".

I am very pleased to extend a very warm welcome to all senior citizens who reside in the parish, to join us for the **Old Basing Carnival Senior Citizen Party 2020** on **Saturday, 15th February (midday for 12.30pm start)** at **Old Basing Village Hall**. Lovely food, great company, a few fun activities and a free raffle. We will be doing our usual welcome sherry/orange juice – however do feel free to bring a bottle of wine to have with your lunch if you would like too. If you would like to join us, please complete the **reply slip** below and **return** to **Sandie Rice** at the address below no later than **Friday, 7th February** – thank you.

KEY DATES FOR YOUR DIARY

Carnival Selection Disco – Friday, 6th March

Carnival Day – Saturday, 20th June

If you interested in joining the **Old Basing Carnival Committee** or helping at any of our events please contact **Sandie Rice, Secretary**, on **01256 477637** or **Joe Croombs** (see below).

Joe Croombs (Chair, Old Basing Carnival Committee)

Tel. **07768 032936**; email: **oldbasingcarnival@outlook.com**

OLD BASING CARNIVAL SENIOR CITIZEN PARTY 2020 (SATURDAY, 15TH FEBRUARY)

Please complete and return to: **Sandie Rice, 16B Pyotts Hill, Old Basing, RG24 8AR** or email information below to **oldbasingcarnival@outlook.com** no later than **Friday, 7th February**.

I would love to join you for the Old Basing Carnival Senior Citizen Party 2020:

Name/Group:

Number of people attending:

DO YOU HAVE A WILL IN PLACE?



CLARKE
& SON
SOLICITORS

A Will is quite possibly one of the most important documents you will ever sign.

Call now to book a free Will healthcheck or to start the process of making your Will.

Clarke & Son Solicitors LLP

Manor House 8 Winchester Road Basingstoke Hampshire RG21 8UG

T: 01256 320555

www.clarkeandson.co.uk

M MARTIN
MATTHEWSON

Call Us:
01256 364753

ALL MAKES SERVICING & REPAIRS
THE VOLVO & NISSAN SPECIALISTS



**MOT TEST
CENTRE**



Visit: www.garagebasingstoke.co.uk

FREE Local Collection & Delivery T&C's Apply



Unit 1 Pensell Farm, Farleigh Road, Cliddesden, Basingstoke, Hants. RG25 9A

www.basingtutors.com

Basing Tutors

- One-to-One Tuition
- Friendly, personal approach
- Professional tutors

Full diagnostic assessment
with no further obligation

Initial consultation
free of charge

Tel: **01256 470948**

Email: admin@basingtutors.com

**Local
Tutors
For Local
People**



20% OFF

selected products
offer exclusively for
Basinga readers

(With this advert. New orders only)

Visit Basingstoke's most recommended bathroom
& kitchen supplier and installer... Checkatrade.com

A1 Bathrooms & Kitchens

- Fully employed fitters
- 24/7 Emergency callout
- Project managed installation
- Comprehensive insurance
- 4 year labour guarantee



Checkatrade.com

Ask to speak to any of our customers!

Your Dream, Our Creation

www.a1bathrooms.co.uk

SHOWROOM: Unit 3, Cartel Business Centre, Stroudley Road, Basingstoke RG24 8FW T: **01256 810460**

OLD BASING BOILER SERVICES



Boiler Installations

Servicing and Repairs

Unvented/Vented Cylinders

Power Flushing
of Heating Systems

Free Estimates

No Call Out Charge

Landlord Certificates

Fully Insured

01256819521 **Bill Martin** 07990514472

www.oldbasingboilerservices.com

Keeping you Gas Safe



**CONTACT BASINGSTOKE
01256 325575 ANYTIME**

**ARE YOU A WORKING WIFE?
AND TIRED OF COPING WITH THE HOUSEWORK?**

WE PROVIDE

REGULAR/HOUSE MOVE/END OF TENANCY CLEANS
IRONING, OVENS AND CARPET CLEANING
OVER 25 YEARS IN BASINGSTOKE



RING US TODAY FOR A FREE BROCHURE

01256 325575



CHEQUERS

Independent Estate Agents



**Thinking of Selling in Old Basing/
Lychpit in 2020 or on the market
without results*?**

Choose an agent one step ahead of the rest...

**Call 01256 810018
and we'll get you moving**

successfully selling property for over 28 years....

www.chequersstateagents.co.uk

T 01256 810018 E sales@chequersstateagents.co.uk

*If you have instructed another agent or a sole agency and/or sole selling rights basis, the terms of these instructions must be considered to avoid a possible liability to pay fees to commission.

A Happy New Year from all at the Parish Council

COMMUNITY PARTNERSHIP EVENING

We were pleased to meet so many representatives from clubs and organisations connected with the Parish at this annual event in December. It is always good to put a face to a name and, in addition to those who have been serving the community and coming to the evening for many years, there were also a number of new faces.

LYCHPIT COMMUNITY HALL

Our **Lychpit Hall caretaker** and the **Village Hall caretaker** have agreed to share caretaking for both venues, each working alternate weekends. They both have long experience of looking after parties and events at these venues so hopefully the new arrangement will work and allow them some free weekends. However, if you feel you may be interested in providing back-up cover for Lychpit Community Hall, please contact us.

PARISH COUNCIL MEETINGS – 2020

Below are dates for the first half of this year. A **planning sub-committee** has been set up to deal with any matters relating to the proposed solar farm and adjoining land and these meetings will precede Planning Committee meetings starting at **7pm** when required.

7th January	Parish Council Meeting
14th and 28th January	Planning & Development Meeting
4th February	Parish Council Meeting
11th and 25th February	Planning & Development Meeting
18th February	Finance & Resources Meeting
3rd March	Parish Council Meeting
10th and 24th March	Planning & Development Meeting
17th March	Facilities Management Meeting
7th April	Parish Council Meeting
14th and 28th April	Planning & Development Meeting
21st April	Annual Parish Meeting
5th May	Parish Council Meeting
12th and 26th May	Planning & Development Meeting
19th May	Facilities Management Meeting
2nd June	Parish Council Meeting
9th and 23rd June	Planning & Development Meeting
30th June	Facilities Management Meeting



PARISH COUNCIL MEETINGS

The next two meeting dates are **Tuesday, 7th January** and **4th February at 7.30pm** in the **Pavilion Committee Room**. All are welcome and anyone with impaired mobility should contact the Parish Office so they can be accommodated.

Parish Clerk: **Mrs Sandra Tuck** Assistant Clerk: **Mrs Kate Hope**

Address: **The Pavilion, The Recreation Ground, The Street, Old Basing, RG24 7DA.**

Tel: **01256 462847** Office Opening Hours: **Monday to Thursday 10am to noon**

Email address: **clerk@oldbasing.gov.uk** Website: **www.oldbasing.gov.uk**

R.T. MITCHELL & SONS BUILDING CONTRACTORS

Est. in Old Basing 1972

HOUSES

EXTENSIONS

GARAGES

LOFT CONVERSIONS

ALTERATIONS

RESTORATION OF LISTED BUILDINGS

Tel: 01256 352225

www.rtmitchellandsons.co.uk



The Water Softener Specialists



- Manufacturing water softeners for over 30 years
- Latest non-electric block salt water softeners
- New installations & repairs
- Advanced technology water filters for pure drinking water
- No call-out charge
- Based in Hook

Fitted, fully reconditioned water softeners from just £395 (includes warranty).

Tel: 01256 768171

Mobile: 07836 247694

www.amsmayfair.co.uk



MIKE'S GARDEN SERVICES

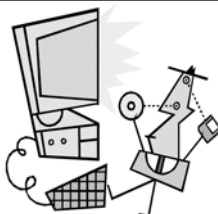
- General garden maintenance
- Landscaping and planting
- Garden clearances • Tree / hedge work
- Fence & shed work / treatments
- Lawn mowing • Turf laying
- No job too small • Fully insured
- Logs, Kindling and De-icer deliveries
- Free estimates • Competitive rates

Tel: 01256 325015

mnm.chapman@talktalk.net

www.gardenerbasingstoke.com

AFFORDABLE CARE & SUPPORT
FOR ALL YOUR GARDEN NEEDS



PC-fix-IT

Tel: 01256 474997
or 07909 681606
www.pcfixit.co.uk

Repairs, Upgrades, Virus removal,
Broadband, Internet, Wireless, etc.

Reliable, experienced service.



INTERIOR

EXTERIOR

Painter's Pride



**EXPERIENCED HOUSEHOLD
PAINTER & DECORATOR**

NO JOB TOO SMALL

TEL: 01256 355356 or 07876 495657

World-Class Podiatry, Locally

WHY see us?

We train to be the best we can be, so that we reach our potential and help you reach yours

HOW do we do this?

By investing in world-class, cutting edge equipment and the latest evidence-based training for our TEAM

WHAT does this mean for you?

Pro-active, forward-thinking and effective treatment in a welcoming and friendly environment

We combine our expert skills, our passion for seeing people at their best and our World-Class facilities and equipment to deliver excellence in Podiatric care

- Foot and leg pain
- Running injuries
- Hard Skin
- In-growing toenail management
- Video Gait Analysis using Optogait Technology
- Swift Verruca Treatment
- Shockwave Therapy for tendon injuries



To book an appointment to see a Podiatrist
Call 0800 999 7337

OR visit
www.eclipsefootclinic.co.uk
to book online

Visit us at Lychpit Surgery



Mention the code
BASINGA2 when
booking your first
appointment to
receive a free gift!

Transforming homes in Old Basing since 1996

Quote
'BASINGA'
for a preferential
quote.

- ✓ Windows & Doors
- ✓ Conservatories & Orangeries
- ✓ Garage Doors
- ✓ Guaranteed Work
- ✓ Great Prices



Call 01256 841522

riptonwindows.co.uk

NEWS FROM BASING HOUSE

With the Christmas Fair over, we have turned our attention to next year – **2020** is the **375th anniversary of the fall of Basing House** and this anniversary will be well and truly commemorated across the summer, by both the re-enactment groups that come to the ruins – the Sealed Knot and the English Civil War Society,

We do remember that Basing House isn't only a Civil War site. It was a Tudor Palace, as big as any other in England. And that Tudor palace was built on the site of a Norman motte and bailey castle. So, we can look at running activities linked to these periods, too. In the past we have had several successful Tudor days. We can also use the site to inform people about archaeology and to introduce children to the principles involved.

We are looking at what else we can do. Outdoor theatre is established, and in the past, we have had 'pop up' cinema, and opera in the barn.

Could you help us run these, by joining our team of **volunteers**? We have **gardening volunteers**, who help to keep our 14 acres, two formal gardens and many flower beds under control, mainly on Wednesdays. We have **welcome volunteers**, who help people round the site, explain it, guide tours and help at reception. This is not an onerous task, certainly not one which needs to become a regular commitment – we'd love to have some new volunteers who could just help with all or some of the larger, weekend, events. If you are interested in helping, either contact me (a volunteer), or **David Trevithick at Milestones** – email: david.trevithick@hampshireculturaltrust.org.uk or tel. **01256 639550**.

Meanwhile the staff and volunteers at Basing House wish you a Happy New Year.

Andrew Howard (email: andrew@howardz.me.uk or tel. **01256 327014**)

WHITCHURCH SILK MILL

See **Whitchurch Silk Mill** in a new light this January! The Mill and its gardens in the heart of rural Hampshire will glisten and sparkle this January with an all new magical, **after-dark illuminated-trail**. The Mill will be transformed by spectacular installations, leaving the dark winter evenings aglow. This is a first for the Mill as it features dazzling light artworks, installations and an illuminated trail.

Often known as 'Blue January', for many it is a time to mark the end of the Yule season and celebrate the end of winter and the return of the sun. Normally this quiet Hampshire town falls into darkness but this January the Mill will glow brighter than usual from **Friday 17th to Monday 26th January** thanks to the addition of sparkling installations from Yes Productions.

As part of the illumination, there will be a series of events including a business networking event, artists' development event, a health and wellbeing day and a skills project involving local young people. There will be markets and family activities over the weekends.

It will be an amazing time of year to visit the Mill as the unique façades of this weaving icon will be brought to life with colour, shape and movement, and the tree canopies and river vista will be drenched in grand illuminations reflected in the crystal clear waters of the River Test. Vintage lanterns in the Mill and light pipes on the lawn continue the surprises both inside and outside the Mill.

For more information visit www.whitchurchsilkmill.org.uk

The Barn Animal Hospital

The only Small Animal Hospital in the Basingstoke area.

Our friendly caring team welcomes new clients and their pets to our purpose-built veterinary hospital with 24 hour on-site nursing care.

- Vaccinations
- Puppy parties
- Pet passports
- Neutering
- Microchipping
- In-house laboratory
- Ultrasound, ECG
- X-ray & dental X-ray
- Endoscope
- Veterinary ambulance



W: www.barnvets.co.uk

T: 01256 329 522 E: reception@barnvets.co.uk

A: Paynes Meadow, Lychpit, Basingstoke, RG24 8AD

CONSIDER IT DONE!



PAINTING & DECORATING HOUSEHOLD MAINTENANCE

** FULLY INSURED **

** HIGHLY EXPERIENCED PROFESSIONAL **

** DILIGENT & TRUSTWORTHY **

** REFERENCES AVAILABLE **

Call Graham: 07494 294246

Email: consideritdone.hampshire@gmail.com

Facebook: www.facebook.com/consideritdone80

Lamberts Plumbing Services

PLUMBING & HEATING CONTRACTORS

BOILER INSTALLATION & SERVICING

BATHROOM INSTALLATION & TILING

GAS SAFETY INSPECTIONS

ALL ASPECTS OF MAINTENANCE REPAIRS

NO JOB TOO BIG OR SMALL

Railside, Station Road, Hook, Hampshire RG27 9HT

Tel: 01256 783597 • Mobile: 07501 559668

Email: lamberts_plumbers@yahoo.com • www.lambertsinhook.co.uk



Cawley
Cleaning Services
Domestic and Commercial

- Window Cleaning - sills/frames/doors + text alert eve before + convenient online payment
- Professionally Qualified Carpet Cleaning
- Driveway Cleaning and Restoration
- Gutters/Fascias/Soffits Cleared and Cleaned
- Roof Moss Removal and Cleaning
- Patio and Decking Cleaning and Treatments
- Conservatory Valets
- Steam Cleaning
- Softwashing

Local | Experienced | Insured | Reliable

Contact now for your FREE quote:
01256 973144

info@cawleycleaningservices.co.uk

www.cawleycleaningservices.co.uk



facebook@cawleycleaningservices

**Start every
day with
a healthy
smile**



**Local, friendly,
professional
dental surgery**

- High quality general dentistry
- Cosmetic dentistry
- Orthodontics
- Teeth whitening
- Implants
- Facial aesthetics
- Early morning, late evening and Saturday morning appointments
- Children seen free on NHS
- Reduced rates for 18-22 year olds
- Denplan

Call 01256 840141

www.guineacourtdental.co.uk

21-22 Guinea Court, Chineham, Basingstoke RG24 8XJ



Guinea Court
Dental Surgery

THE MILL FIELD CONSERVATION GROUP



Have a break from weekend chores for a couple of hours and try your hand at **conservation at your local nature reserve** on **Saturday, 18th January**, instead. This month we will be clearing back scrub growing next to the lower path and forming a dead hedge.

You don't need to book in advance just come along on the day, the more the merrier. No experience is necessary just wear appropriate clothes and footwear and we will provide tea, coffee and tools. Meet us on the lower path near the entrance to the woods **from 10am**.

WHAT TO LOOK OUT FOR THIS MONTH

If you are out walking the dogs at dusk you may see Linnets, Reed bunting and Yellow Hammer going to roost most nights. Redwing and Fieldfare will be shifting round with the chance of a Water Rail, Snipe or Jack Snipe or maybe a Bittern or Waxwing if the weather becomes harsher. Siskins and Lesser Redpoll can be seen along the wood edge and flocks of Long tailed Tit will be moving through the field mixed with the occasional Chiffchaff or Goldcrest.

Anne Francis – tel. **07974 944439**; email: **millfieldoldbasing@yahoo.co.uk**
Facebook: **Mill Field Conservation Group**

HAMPSHIRE & ISLE OF WIGHT WILDLIFE TRUST



Turn your old **Christmas tree** into a **wildlife haven**! Christmas trees aren't just homes for baubles and fairies. They can also house garden birds, insects and small mammals — not in your living room of course, but once your tree has served its festive purpose, moving it outside is a great way to help wildlife.

Pop your tree in a heavy pot full of soil and you may be surprised at its resilience. Even those that have had their roots chopped off can go on to thrive. Choose a relatively sheltered area to reduce the risk of the tree blowing around in the wind. Small animals may seek shelter within the branches in cold and windy conditions, so a quiet corner of the garden is ideal. Once you've found a good spot for your tree, it's time to start decorating. Christmas may be over, but that's no reason to leave your tree undressed! Add some bird food to the equation and bring new life to your garden. What better way to start the New Year?

HERE ARE SOME 'DECORATIONS' THAT YOU CAN MAKE AT HOME

Orange Baskets: First you need to halve an orange and scoop out the flesh. Secondly, make three or four little holes through the side of the orange, and thread string through each of them to create a hanging basket. Now fill the basket with bird seed and hang it up on your tree. **Peanut Pine Cones:** Find a pine cone, and then attach a piece of string to it so you're able to hang it like a bauble. Dip the cone in peanut butter, cover it in bird seed and you're done! **Suet Shapes:** Mix suet with plenty of bird seed, squish it into cookie cutters and then push the shapes out onto greaseproof paper. Unwind a paperclip and embed it into each shape to create a hook for hanging. Pop your shapes in the freezer to set, and then hang them up on your tree for the birds to enjoy. **Fruit Fandangles:** Use string to make delicious décor from old fruit. Even if it's bruised or partly rotten, it will be gratefully received by garden birds.

Looking for independent financial advice you can trust?

We'll help you create, increase and protect your wealth. Our personal service is designed to build a shared understanding of your wealth objectives and to translate these ambitions into reality.

To find out more, please call

01276 34932

S4financial
SUPPORTING YOUR FINANCIAL LIFE



 **01276 34932**

 **www.s4financial.co.uk**

- * Family Wealth Preservation
- * Wealth Management
- * Tax Planning
- * Protection Planning
- * Retirement Planning
- * Mortgages

The value of investment can fall as well as rise. You may not get back what you invest. Your home may be repossessed if you do not keep up payments on your mortgage. There is normally a fee for advising on and/or arranging a mortgage, the precise amount will depend on your circumstances but we estimate that it will be £495.

R.LOVELOCK
HEATING & PLUMBING

ALL ASPECTS OF PLUMBING
INCLUDING

- BOILER FITTING • SERVICING & REPAIRS
- GENERAL PLUMBING

TEL: 01256 421138
MOB: 07383 064464
EMAIL: contact@rlovelockheating.co.uk



lsc
LOUISE SANDERS
OSTEOPATHS

Free car park
Emergency appointments
Home visits
Free advice on rehabilitation
Free advice on exercises
Free ergonomics advice

DO YOU SUFFER FROM.....

Back Pain, Sciatica,
Headaches,
Sports Injuries,
Shoulder Problems
Neck Pain, Joint Pain,
Elbow & Wrist Problems,
Muscular Strains

PJH
Window Cleaning Services
Local, reliable window cleaner
For a free, no obligation quote for
• Window cleaning • Facias
• Gutters • Conservatory Roofs

Please call Pete on
07762 616600
e-mail: pjhcleaning@gmail.com

OLD BASING
Old Basing Health Centre,
Manor Lane
Old Basing | Hampshire | RG24 7AE
01256 868 370

CLASSIFIED ADVERTISEMENTS



Piano Lessons

All ages and abilities

Beginners welcome

Qualified and experienced teacher

Philippa Ford 01256 470174



Jane Stockdale

HOME COOKING FOR ALL OCCASIONS

SPECIALISING IN CAKES & CANAPES

Tel. 01252 723161 / Mob. 07775 696918

Submissions to the magazine and website can be made via www.basinga.org.uk using the web forms:

Selection for Articles/Letters and Diary Dates will be found on the "Submissions" drop down and for Free and Concession Ads on the "Advertise with us" drop down. Paid advertising enquiries can also be made in the same way.

Submissions made via the forms now provide a common input for both the magazine and website and are automatically routed to the member of the team responsible for processing them. All submission must be received by the 10th of the month (6th in December) previous to the magazine issue month.

If you have trouble finding the forms, you can of course contact us and we will advise.

Our privacy Policy is available to read on the website which includes the new GDPR requirements for publishing photographs.

Contacts for general enquiries and assistance:

advertising@basinga.org.uk or editor@basinga.org.uk or webtech@basinga.org.uk

All Advertisements in the magazine and website are inserted in good faith and the Basinga Management Committee accepts no responsibility for any statement, omission or errors made by the advertisers; nor endorses the products or services advertised. The views and opinions expressed in the Basinga are those of the organisations, individuals and authors concerned and not necessarily those of the Basinga Management Committee.

ADVERTISERS NEWS

A welcome to our new and returning Advertisers who support the magazine enabling us to continue to deliver your copy of the Basinga, now in its 46th year of continual production.

We have vacant contract advertising space available for 2020, if you are interested contact the Advertising Manager on advertising@basinga.org.uk

brain chase coles

Solicitors

Look no further for your
local legal experts



www.brainchasecoles.co.uk

Tel: 01256 354481 | enquiries@brainchasecoles.co.uk

Property · Wills & Probate · Family Law · Family Mediation · Notary Public

Haymarket House, 20-24 Wote Street, Basingstoke, Hampshire RG21 7NL



R.KNIGHT
JCB & PLANT HIRE

All Ground Work Undertaken

Fencing & Tree Work

Tel: 01256 324588

Mobile: 07703 458372

Groundworks | Footings | Driveways | Landscaping

W.T.HILL **Painter & Decorator**

Internal & External

Domestic & Commercial

Over 30 Years Experience

Tel: 07748808069/01256 467901

Free Quotations

GARDEN SOLUTIONS **NEIL INKLEY**

SPECIALIST IN FENCING, TURFING,
PATIOS ALSO GENERAL GARDEN WORK
including Lawns, Hedges, Clearance,
and Pressure Cleaning

Local References Free Estimates

01256 882108 or 07768 105488

FREE ADS – BUY AND SELL

Note: All ads are processed in received date order. Ads not included this month will be entered in next issue, space permitting. If you do not want your ad to appear later contact the Advertising Manager. Ads also appear on the web site with photographs if available.

NO FREE ADS THIS MONTH

CONCESSION ADVERTS – WHAT'S ON

LADIES FIRST FRIDAY COFFEE MORNING: The next occasions will be at the home of Mrs Dusty Brough, 7 Olivers Walk, Lychpit, on 3rd January and then at the home of Mrs Ann Price, 10 Olivers Walk, Lychpit, on 7th February. Both from 10.30 am to noon. For more information contact Sheila Stone (tel. 01256 350238).

PINK PLACE: Annual Burns Night Celebrations on Friday, 24th January, from 7pm to midnight, at the Apollo Hotel Basingstoke, RG24 9NU. Includes: 4-course Scottish Supper, whisky toast, traditional piper, poems, music, games, and much more. Call us today for more info and to book on, tel. 07535 350068 or email: events@thepinkplace.org.uk (early bird tickets £45pp).

LYCHPIT COMMUNITY EVENTS SOCIETY: Thank you to everyone who, despite the rain, came to the Lychpit Christmas celebrations on Sunday, 24nd November, and helped to bring the community together. Grateful thanks also to the prize donators, helpers, singers and musicians and particularly Minuteman Press for the printing and Alan Sewell for the wonderful Christmas lights.

BASINGSTOKE DEANE ROTARY 12TH CHARITY CONCERT: The Band of Her Majesty's Royal Marines at The Anvil, Basingstoke, on Sunday, 26th January, 3pm. Tickets available from The Anvil Box Office. Unashamedly patriotic, a fabulous concert.

ST MARY'S FLOWER ARRANGERS COFFEE MORNING: Come along to the St Mary's Flower Arrangers Coffee Morning on Saturday, 22nd February, from 10 am until noon, in the Parish Room. Everyone welcome. There will be a raffle, bring-and-buy, tea, coffee and cakes.

DISCOVERY CENTRE: For January's courses and events.see our website's Forthcoming Events Feature at www.basinga.org.uk

CHRISTMAS TREE RECYCLING

If you had a real tree for Christmas you can recycle it at one of a number of drop-off points across the borough between **Thursday, 2nd January and Sunday, 26th January.**

For the first time those people signed up to the **Garden Waste service** will be able to put their real Christmas trees out for collection with their fortnightly garden waste. Christmas trees over six feet need to be cut in half and decorations must be removed from all trees.

For more information visit www.basingstoke.gov.uk/christmas-tree

BEST OF FLOORING

Laying down a good reputation

Suppliers & Installers of:

- Wood Flooring
- Laminate Flooring
- Underfloor Heating
- Carpets & Vinyls
- Amtico

Home Sample Service Available
Free Estimates & Expert Advice

Unit 3 Cufaude Business Park,
Cufaude Lane, Bramley, Basingstoke, Hampshire RG26 5DL

Showroom Open Friday 10am-4pm, Saturday 10am-1pm

Tel: 01256 810327

www.bestofflooring.co.uk

Email: sales@bestofflooring.co.uk

Checkatrade.com



OVENCLEAN
The original oven cleaning specialists

Non-Caustic Fresh Solution Used Every Time
Ovens ~ Hobs ~ Extractors
Microwaves ~ Aga's ~ Ranges Cleaned

FOR A FREE NO OBLIGATION
QUOTE PLEASE CALL

01276 473118 - 07882 886736
www.ovenclean.com



DESIGN & BUILD, PLANTING, DECKING, FENCING
TURFING, PATIOS, DRIVEWAYS & MAINTENANCE
FULLY INSURED & CRB CHECKED

CONTACT JONATHAN FOR A FREE QUOTATION

01256 412723 - 0771 7214521

E: info@jcooklandscapes.co.uk

www.jcooklandscapes.co.uk

B&M FENCING

GARDEN & LANDSCAPE SUPPLIES

- | | | |
|---------------------|----------------------|--------------------|
| • Panels (3' - 6') | • Reclaimed Sleepers | • Sharp Sand |
| • Trellis | • Softwood Sleepers | • Building Sand |
| • Concrete Post | • Oak Sleepers | • Ballast |
| • Closeboard Panels | • Decking | • Scalpings |
| • Natural Sandstone | • Rolawn Turf | • 10mm Gravel |
| • Paving Slabs | • Topsoil | • 20mm Gravel |
| • Block Paving | • Landscape Bark | • Decorative Stone |

Delivery Service Available

Mon-Fri
7.45 - 5pm
Sat 9am - 5pm

01256 762739

Fencing
Fitting Service
Free Estimates

www.bmfencing.co.uk

Reading Road, Hook, Hants, RG27 9DB

enquires@bmfencing.co.uk

BASINGSTOKE AND DEANE BOROUGH COUNCIL – COUNCIL PLAN

Basingstoke and Deane Borough Council would like to hear your views on its draft **Council Plan** to ensure the borough continues to be a great place to live over the next four years and budget proposals to support this.

The draft Council Plan for 2020 to 2024 sets the key priorities for the council over the next four years and into the future. With a focus on putting residents at the heart of everything the council does, four priorities have been developed: strengthening communities, protecting and enhancing our environment, improving safety and planning for the future.

Supporting the council plan, proposals for a balanced budget for 2020 to 2021 aim to protect services that residents value. To do this, proposals include a £5 average increase for the borough's part of the council tax and a 3% average increase in fees and charges to help pay for the cost of optional services the council offers.

Over the last 11 years £13.7 million in savings have been made without cutting services, with the borough council continuing to look at how it can run more efficiently. Further savings of £1.42 million have been identified in 2020/21, increasing to £1.82 million by 2023/24.

Executive Director of Finance and Resources said: "Residents give the area a 94% satisfaction rating however the council is not complacent. Based on what people and businesses have said matters to them, this draft plan sets priorities that put residents at the heart of the council's future plans. This is supported by the council's proposals to deliver a balanced budget for 2020 to 2021. As residents, businesses and partner organisations are key to the success of these plans, the council would like to hear from a range of people to help shape its proposals."

To give your views on our Council Plan and budget proposals, please go to website **www.basingstoke.gov.uk/priorities** and feedback from the consultation, which runs until **Wednesday, 1st January**, at www.basingstoke.gov.uk/priorities will be considered before final decisions on the Council Plan and budget are taken at a meeting of Council in February.

BASINGSTOKE AND DEANE BOROUGH COUNCIL – BIN COLLECTION

BIN COLLECTIONS FOR THE NEW YEAR WILL BE AS FOLLOWS

Normal collection date	New Date
Wednesday, 1st January	Friday, 3rd January
Thursday, 2nd January	Saturday, 4th January
Friday, 3rd January	Monday, 6th January
Monday, 6th January	Tuesday, 7th January
Tuesday, 7th January	Wednesday, 8th January
Wednesday, 8th January	Thursday, 9th January
Thursday, 9th January	Friday, 10th January
Friday, 10th January	Saturday, 11th January

Check your bin collection day on the website **www.basingstoke.gov.uk/bincollections** or call **01256 844844**.



ST NICHOLAS' SCHOOL

FLEET • HAMPSHIRE

An independent day school for boys aged 3-7 and girls aged 3-16

- Small class sizes
- Inspirational teachers
- A caring, family ethos
- Purpose-built facilities
- Outstanding results
- 'Excellent' ISI Inspection
- School buses run from Alton, Bentley, Basingstoke, Bramley, Chineham, Hook, Old Basing, Odham, Hartley Wintney, Fleet, Farnham, Rowledge, Yateley, Camberley, Farnborough and Aldershot

Open Mornings

Wednesday 5th February 2020
9.30am – 12.00pm

Saturday 7th March 2020
10.00am - 1.00pm

Year 7 Entrance Exams

10th January 2020



T: 01252 850121 | E: registrant@st-nicholas.hants.sch.uk

f [stnicholasschool](https://www.facebook.com/stnicholasschool) | t [stnicholasfleet](https://twitter.com/stnicholasfleet)

st-nicholas.hants.sch.uk

Looking for a Letting Service from an Agent who cares? You'll find us on The Street



all
aspects
LETTING
SERVICES

20% Discount with this advert

T: 01256 470411

69A The Street, Old Basing RG24 7BY
info@allaspectslettingservices.co.uk

Zoopla



PROPERTY MANAGEMENT • RELOCATION CONSULTANTS • INVENTORY SERVICES

OLD BASING VILLAGE HALL JUMBLE SALE

Come and grab yourself a bargain, join us at the **Old Basing Village Hall Jumble Sale** on **Saturday, 8th February**, at **2pm**, in **Old Basing Village Hall**. A wide range of items for all ages, plus tea, **coffees** and cakes. Is it time to make room in some cupboards for Christmas? Does your garage need a declutter? We would be grateful for contributions to sell. We appreciate bric-a-brac, good quality clothing, gardening tools, books and toys! Unfortunately we can't take large items of furniture, but everything else, yes please. **Please leave your items in the outer porch from Monday, 3rd February, through to noon on Saturday, 8th February**. This is a fundraising event, helping to enable the volunteer committee to maintain our wonderful hall. If you would like to help on the day with sorting or selling we would love to see you there. **Sorters arrive 10am, sellers 1.45pm. Entry 25p.**

Laura Haystaff (OBVH Committee) – tel. **07969 072230**

OLD BASING WI



Our December meeting was a busy one with Members entertained by local actress Rowan Suart who performed a recital of Christmas poems and readings. After a hot drink and a mince pie we settled down to a special Christmas raffle and there was the opportunity to purchase Christmas crafts and cards.

In this, our Centenary year, our Craft Group has produced a magnificent Wall Hanging – now on the wall in St Mary's Church Parish Room. Please spend a minute to have a look next time you are passing, as it depicts all the wonderful things the WI does in the Village. We start 2020 with a **Members own entertainment evening on Tuesday, 7th January**, at **7.30pm** in the **Parish Room**. The competition will be 'A favourite Piece of Amusing Poetry'. Please remember that we will be collecting our annual subscription on this evening. Other activities planned for January include a Festive Meal at the Bolton Arms, a local walk, the weekly coffee mornings at Conkers Garden Centre and our monthly lunch at The Hatch. For further details please go to the Hampshire WI website at **www.hampshirewi.org.uk** (click on WI's from the top of the page and select Old Basing from the list).

CHINEHAM & OLD BASING NWR (NATIONAL WOMEN'S REGISTER)

For our December meeting our group got into the festive spirit with our annual Christmas lunch which was held in the very nice and newly refurbished Pavilion tea rooms. The sun shone, the wine flowed, the delicious food was devoured with relish and the chatter was lively. Our Book group was also in Christmas mode for our December meeting where we had wine and mince pies and a book swap, as well as making recommendations for the books we would like to read next year. We welcome new members so if you are looking for something a little different, enjoy some lively conversation and a variety of activities to choose from then do come along and check us out with no obligation to join. We usually **meet in the afternoon in each others' homes on the first Monday of the month**. Our Lunch club meets at various venues on different days of the week and our book lovers meet 8pm every fourth Thursday. For more information about NWR go to **nwr.org.uk** or to find out more about our group contact **Sandie** – email: **sandra.tapping@gmail.com** or **Karen Dann** – tel. **01256 328488**.

Dear friends,

At Christmas in church we celebrated the birth of Jesus, foretold by the prophet Isaiah to be Prince of Peace. Many Christmas cards have images of doves, a symbol of peace; and many of the Christmas Carols we sing talk of Jesus bringing a message of peace, think for example of rousing Hark the Herald Angels Sing with the lines 'Peace on earth and mercy mild, God and sinners reconciled' and 'Hail the heaven born Prince of Peace!'

In his life and ministry Jesus calls us to be peacemakers, saying 'blessed are the peacemakers' and 2,000 years on that call to work for peace remains just as strong. Division still runs through societies, and can begin with the polarisation of 'us' and 'them.' It is important that we learn from the lessons of the past and do not allow groups of people to become marginalised, with their and our peace threatened by hostility. It is this dehumanisation of 'the other' that has led to the tragedy of genocide around our world.

Monday, 27th January is set aside by the United Nations as **Holocaust Memorial Day**, and this year is particularly poignant as 2020 marks the 75th anniversary of the liberation of Auschwitz. On Holocaust Memorial Day (HMD) we especially remember the six million Jews killed under Nazi Persecution in World War II and those killed in subsequent genocides in Cambodia, Rwanda, Bosnia and Darfur. Each year there is a theme to focus our commemoration of this event, which this year is 'Standing Together.' We are called today to stand together: against rising division and hate, with the memory of people who were murdered, to support those in need.

Every Church of England school in Hampshire has been asked this year to look at the importance of promoting peace and tackling hatred in society, in a project supported by the Holocaust Memorial Day Trust. As part of this, the children at St Mary's will be creating a 'Peace Pole', a Christmas-tree-sized pole decorated with a message 'May Peace Prevail On Earth.' There will be Peace Poles from schools around Hampshire on display at Winchester Cathedral in the summer, and individuals and organisations are working locally to create a Peace Pole trail in this community, to express that desire within each of us for peace. So look out this year for Peace Poles appearing around Old Basing and Lychpit, and if you would like to create one please do be in touch. (See also article on page 30.)

Wishing you a happy and peaceful 2020!

With love,

Reverend Heather



THIS MONTH AT ST MARY'S CHURCH

- Sunday, 5th January** **Epiphany Service (9.30am):** Come and continue to celebrate the Christmas story with the arrival of the Magi (Wise Men) at the crib
- Sunday, 12th January** **Baptism of Christ (9.30am):** The service will include a celebration of our baptisms. Do bring along your baptism candle to be re-lit if you would like.

OTHER DATES TO NOTE AT ST MARY'S

- Saturday, 4th January** **Men's Breakfast (8.45am)** in the **Parish Room**. If you fancy a full English breakfast do pop along to the Parish Room – you'd be most welcome (price £4).
- Monday, 27th January** **Tea & Talk Café (2pm)** in the **Parish Room**. All welcome, no charge.

LOOKING FORWARD TO FEBRUARY

- Sunday, 2nd February** **Candlemas (9.30am):** The Presentation of Jesus in the Temple
- Wed, 26th February** **Ash Wednesday Service (7.30 pm)**

Full details of all services are available on St Mary's website and Facebook page.

The church is open daily for prayer and you are welcome as you are every Sunday.

Sunday services take place every week at **8** and **9.30am**. All are welcome. There is a children's corner where young children can play and pray. During the 9.30am service, Junior church meets for primary school age children in the Parish Room.

After the 9.30am service refreshments are served in the Parish Room which is an informal setting in which to meet other members of the congregation. If you have time after the service do join us, you will be very welcome.

For more details about the life of St Mary's please visit www.stmarysoldbasing.org.uk or find us on Facebook: **St Mary's Old Basing and Lychpit**

OLD BASING METHODIST CHURCH

- Tuesday, 7 & 21 January** **Craft group (2 to 4pm).** Bring your own craft or items will be provided.
- Friday, 10th January** **Coffee Break (10:30am to noon),** our monthly coffee morning
- Tuesday, 14th January** **MHA lunch club (noon to 3pm)** followed by activities
- Tuesday, 28th January** **Midweek Communion (2.30 to 3:30pm)**

Our regular **Sunday worship** starts at **10.30am**. Coffee and tea are served after the service. Children are welcome into our junior church.

Come and join us for worship, midweek prayers and Tuesday craft – a warm welcome awaits you.

CHURCHYARD CONSERVATION GROUP (PIOCC)

Happy New Year! This month's **working party** will be on **Saturday, 4th January**, at **10am** – meet in the **church lobby**. There will be **no Thursday afternoon working party in January**. We will continue our seasonal conservation work, including woodland management. Everyone is welcome. We look forward to seeing our regular volunteers and also new participants. Perhaps your New Year resolution could be to join us; we'd love to see you.

Churchyard Conservation is a community project, not just for churchgoers, so please come along if you would like to be involved. Just turn up in gardening clothes and bring gloves. The tools are provided. Our Saturday morning sessions last about three hours (with a coffee break and chance to relax).

The Conservation Area is a community space open for everyone to enjoy. Already the days are lengthening and signs of spring starting to appear. Despite the cold, the snowdrops are starting to show tiny white buds, the catkins lengthening and the birds starting their spring songs. The WI seat offers a calm spot for reflection and relaxation. You are very welcome to visit. For further information please ring **Fay Farrant** on **01256 476863**.

Margaret Carr – www.stmarysoldbasing.org.uk

BASINGSTOKE NEIGHBOUR CARE NEEDS YOU!

DRIVERS REQUIRED

We provide a service for elderly people in YOUR community. Particularly for those who find it difficult to use public transport or lack the confidence to go out on their own. We provide a driving service to pick them up from home, take them to their appointment and bring them home again, using our volunteer's own car. We also take clients shopping, to social events such as lunch clubs, helping them remain part of their community. We need drivers who can spare a few hours a week during the daytime, Monday to Friday, and who have a car that is comprehensively insured and suitable for carrying an elderly person. In return we will cover your petrol cost from home (currently we pay 45p per mile). Some of our drivers currently work shifts and can only offer one or part of a day per week but even this amount of time can help us. You choose what hours/days you are available and what duties you undertake.

BEFRIENDERS REQUIRED

Would you have an hour a week free? Many elderly people would love to have someone to come and see them for a cup of tea and a chat. You could be the first person they see that week who has time just for them! You will gain great satisfaction and help them to relieve their loneliness. We try to find you someone who lives near to you so that if you do not have your own transport you can walk to them. But if you have to use your car or public transport we will reimburse your costs. We particularly need people who are available during the daytime on weekdays. We need people who have time and patience and like talking to elderly people. You need to have good listening skills and be able to show empathy. We will provide you with training and support and match you with one of our clients. Our befriending co-ordinator will take you to your first meeting with our client and support you as necessary. If you are interested in either or both of the above opportunities please contact us by phone on **01256 423855** or email **info@neighbourcare.com** – see also our website **www.neighbourcare.com** for further information about our service.

Berryford

Accountancy Services

Do you need an accountant?

We offer an accountancy service for small businesses and individuals

Year End Accounts
Bookkeeping
VAT and Tax
Personal Tax Returns

01256 472832 07790 948310

mike@berryford.co.uk

www.berryford.co.uk

A. SEWELL

www.asewell.co.uk



Lighting, Electrical & Audio Visual

All Lighting and Electrical work undertaken including:

- Security & Emergency Lighting
- Interior & Exterior Lighting Design & Installation
- TV, Telephone and Data Distribution
- Multi-room Audio/Visual
- Alarm Systems, CCTV & Door Access Systems
- Electrical Alterations & Re-wires



01256 329893

01252 844663



Home Maintenance Services

Family Business • Fully Insured • Free Quotations

References by Request • 25 Years' Experience

Jobs Undertaken

Fencing • Drylining/Studwalls • Painting/Decorating
Laminate Flooring • 2nd Fix Carpentry • Plumbing • Tiling
Fitting/Designing of Kitchens and Bathrooms

Marcus Underdown

Property Maintenance Expert

01256 479327 • 07878 078135

mtunderdown@virginmedia.com

"We do anything from changing a tap to refurbishing your bathroom"

OLD BASING VILLAGE HALL

*Whatever your function needs
your
Village Hall can meet them.*

Contact: Sandie Rice

Tel: 07544 289932

Email: bookings@oldbasingvillagehall.co.uk



A-Foardable Domestics

WE REPAIR....

Washing Machines, Cookers, Dishwashers, Fridge Freezers,
Ovens, Vacuum Cleaners & Tumble Dryers.

Repairing
Since 1995

Low
Pricing

Family
Run

Qualified
Engineers

Basingstoke
Based

Call: 07891 465499 | Email: afdomestics@engineer.com
Web: www.afdomestics.com

ODIHAM COTTAGE HOSPITAL

Odiham Cottage Hospital provides a range of services for local residents, both at Odiham Cottage Hospital and in the community. These include: NHS community nursing services,; Social day care for older people at the Rosefield Day Centre and footcare clinics managed by Age Concern Hampshire; A range of counselling services including therapy through art and NHS iTalk sessions; Palliative care services including volunteer befriending of patients living with long term medical conditions; Steady and Strong exercise classes to improve balance; Silver Surfing classes for those looking to improve their computer skills; and Specialist clinics including MS and ear wax removal.

Since 1999 the hospital has been owned by a charitable trust (reg no 1068721) which ensures that all services are provided free of charge or at a subsidised cost to local people. The trust is managed by a Board whose Chairman, Janet Kelly says "We are delighted that Odiham Cottage Hospital continues its long tradition of serving the people of West Hart and Old Basing with an ever- increasing range of health and social care services".

Further details can be found on our website www.odihamcottagehospital.org.uk or from **Ginny East** at the hospital on **01256 393600** or email: och1@btinternet.com

The community generously support the hospital's activities, together with funds raised from its **charity shops**, which can be found in:

Old Basing (42 Belle Vue Road) – managed by Sue

Odiham (71 High Street) – managed by Debbie

Hartley Wintney (Millbank House, High Street) – managed by Audrey.

Our shops are always grateful to receive good quality donations and are **open Monday to Saturday, 10am to 4pm**. If you would like to join our happy teams of volunteers, please speak to the manager of the relevant shop – we would love to meet you!

ST MICHAEL'S HOSPICE AND ODIHAM COTTAGE HOSPITAL



St. Michael's Hospice and Odiham Cottage Hospital is recruiting more **volunteer befrienders**. The Befriending service operates in the Odiham, Hook, Hartley Wintney, and Old Basing areas and is looking for home-visiting volunteers. Last year (2019) has seen the service celebrate five years and its success is founded on a committed team of volunteers.

Our volunteers provide social companionship to people who are lonely and isolated and living with long-term health condition. We are looking for people who appreciate the value of companionship, be it chatting, enjoying a pastime together or taking a trip out.

For just two hours a week, you can make a real difference to someone living in your local community. Relevant training, as well as regular and ongoing support will be held locally at Odiham Cottage Hospital. The next three-day training course will be held in the Spring of 2020.

For more information and an application form please contact: **Una Tilt** (Befriending Manager) on: **01256 393609** or email: och.befriending@stmichaels hospice.org.uk



Lisa Ives M.Ost PgCACE MSCCO
GOsC Registered Osteopath
01256 316566
07814 365523

Back & Neck Pain/Ache
Sporting Injuries
Muscular Strains & Ligament Sprains
Muscle Tension
Sciatica
Spasms
Neuralgia & Fibromyalgia
All Joint Pains
Arthritic & Rheumatic Pain
Structural & Cranial Osteopathy
Ultrasound & Dry Needling

Lisa Ives Osteopathy®

Grove House, Lutyens Close, Chineham Court,
Basingstoke, HAMPSHIRE, RG24 8AG.

www.lisaivesosteopathy.co.uk
enquiries@lisaivesosteopathy.co.uk



HeatOn
Gas & Heating Services™

Installation, Service, Repairs
Your local Gas & Heating Specialists

- Boiler & Heating Breakdowns
- Smart Control Upgrades
- Heating & Boiler Installations
- Servicing

Even the small jobs:
Repacing a Radiator, Thermostat
or just fixing a leak.

Telephone 07925 665636
customer.services@heatonghs.co.uk
www.heatonghs.co.uk



Checkatrade.com
Where reputation matters



BASING HOUSE RUINS AND GROUNDS

Plus museum, garden, activity trail, workshops,
outdoor theatre, special events and more!



THINGS TO DO

- Discover the Great Barn and spot the artillery damage still visible on its walls
- Explore the ruins and imagine what the house would have looked like
- Visit the walled garden and learn about Basing House's fascinating history in the museum
- Walk your dog or find a picnic spot

INFORMATION

Pay once, visit all year! With your ticket, you can enjoy unlimited visits to Basing House and return as many times as you like for a whole year! See our website for full details, admission prices and opening times.

Basing House is closed until the 13th April.

BASING HOUSE | Barton's Lane | Basingstoke | Hampshire RG24 8AE
Please call 01256 639550 or email basing.house@hampshireculturaltrust.org.uk



www.hampshireculture.org.uk/basing-house
Hampshire Cultural Trust is a registered charity No. 1151102
and company No. 6898223 in England and Wales.

ST MICHAEL'S HOSPICE SHOPS – JANUARY OFFERS IN STORE



St. Michael's Hospice shops have had another great year thanks to our amazing supporters. Last year our stores delivered a contribution to **£593,000** to the Hospice, a phenomenal amount which shows how every skirt, DVD and paperback dropped off or purchased really does add up.

As a thank you to our supporters this **January**, we are offering **20% off in store!** Just **bring this article along with you** and the staff will be happy to assist you.

Gift Aid is a vital part of the money that we raise, allowing us to claim from HMRC 25p for every £1 spent in store. And the best part is, it costs you absolutely nothing!

To make it easy for us to claim this gift aid, we encourage you to sign up for our **Gift and Gain Loyalty cards**. They allow us to claim gift aid on every donation you make to us and allow you to collect one loyalty point for every £1 you spend in our stores. Once you have collected 100 loyalty points you will get a £5 credit to spend in store. To encourage more people to sign up this January we have a refer a friend scheme; if you get a friend to sign up for Gift and Gain we will give each of you 50 points on your card!

We hope to see you in store soon to wish you a happy new year and we hope you find some great bargains too.

Please be aware, there may be certain items which will not qualify for the discount.

CHINEHAM LIBRARY

We hope that you had an enjoyable Christmas and will find something to tempt you at the library in the New Year. There are two events to look forward to, both costing **£5** to attend, with tickets obtainable from the library and the online shop. On **Thursday, 26th March**, we have former Police officer Ken Wells sharing insights into **'Scenes of Crime' investigations**. Then on **Thursday, 23rd April**, we have Tony Keep talking about the **Great Train Robbery**. Both talks commence at **6pm**. Tickets for our talks sell out quickly, so early booking is advised.

Our regular activities for adults continue as usual into the new Year. The **general reading group** meets on **Saturday, 25th January**, at the usual time of **10.30am**. Our social drop-in group **Cuppa and Chat** meet weekly on **Wednesdays at 10.30am** in the Acorn Room, and both would welcome you. Or if you would like to improve your IT skills in the New Year, **Age Concern** continue to offer **individual tuition** for a **£5 donation**. Sessions can be booked through their office on **01256 423874** and take place on **Wednesday mornings**.

Our numerous children's activities also resume after the Christmas break, with the **Rhymetimes** on **Tuesday mornings for under ones at 10am and over ones at 11am**. **Storytimes** take place every **Saturday of the month except the first one, at 11am**. The **first Saturday of every month** we have our drop-in craft sessions between **10am and noon**. All ages are welcome to attend these. Our **Chatterbooks** group for junior-school-age children meets **monthly after school on Thursdays**, please ask the staff for details.

We are also now offering room hire, with slots available during and outside library opening hours. The Acorn Room is competitively priced from **£7 an hour**. Further details are available on request.

Cathy Foster

P.R. BRICKELL

7 Bexmoor Way, Old Basing



**All aspects of
carpentry work
undertaken**



FOR FREE ESTIMATES & ADVICE ON
KITCHEN FITTING, STAIR PARTS RE-
PLACEMENT, NEW DOORS FITTED, RE-
PAIRS TO ROTTEN TIMBER AND
FRAMES, WARDROBE FITTING, AND
GENERAL MAINTENANCE WORK,
NO JOB TOO SMALL

PLEASE PHONE
PETER ON 01256 355534

S. M. DECORATORS

*Interior & Exterior
Prompt & Efficient Service
Competitive Prices
Fully Insured Company
Over 25 Years Experience
Skim Plastering and
Paperhanging Specialists
City & Guilds Qualified
All Work Guaranteed
For Your
Free Estimate Or Advice
Please call Steve on
01256 811929*

HORIZON SOUND & VISION

Family Run Business Est 1988

- **Aerial & Dish Installations**
Freeview, Freesat, Sky & European
- **Freeview, Sky or Freesat on additional TVs**
Magic Eye control & HD. Phone & Ethernet points.
- **TV Wall Installation**
Free site survey. System planning. Hidden cabling
- **Tuning & set up of your equipment**
Cable tidying
Weak/low signal improvement
- **WiFi Signal Improvement & Network Cabling**

- **CCTV Installations**

- **Audio & Speaker Systems**
Home, Outdoor & Workplace



Checkatrade.com
Where reputation matters

01256 841860

Visit us at Essex Road Basingstoke
www.horizonsatellites.co.uk info@horizonsatellites.co.uk



Over 35 years experience in all
types of domestic, commercial and
industrial fencing

FREE estimates and advice with
no obligation and good quality
workmanship are **GUARANTEED**

CALL US 01256 358 940
www.fencing-in-basingstoke.co.uk

PC Doctor (Hampshire) Ltd

Andy Pearce 01256 841204



Home & Small Business PC's/printers supplied.
PC repairs & upgrades, Laptops & Desktops.
Wireless networking. Virus & Malware removal.
New PC & Tablet setup.
Data & Email Transfer from old system.
pcdoc.hampshire@btinternet.com

OLD BASING INFANT SCHOOL



Year R have fully settled into school now and put on a very rousing performance of their Christmas production *A Little Nativity*. Year 1 excelled in their very 'chirpy' version of *The Little Red Robin*. Year 2 have ventured further afield for their performance and delighted audiences with their festive tale of *Babushka*. Both Year 1 and Year 2 have been out on school trips this

half term with Year 1 visiting Milestones Museum as part of their 'Toys' topic and Year 2 visiting SeaCity Museum (Southampton) as part of their Titanic topic. Much fun was had by all and the children had great fun consolidating their classroom knowledge with real life experiences!

Our governing body are looking for a new co-opted governor to assist the governing body. Their main aim is to maintain and improve the standard of education for all pupils, of all abilities. Their role is to oversee the development of the school and work alongside the Head Teacher providing support. If you wish to be considered for this role contact the chair of governors **Johnathan Richards** on **Johnathan.Richards@oldbasing.hants.sch.uk** for more information.

PEACE POLE PROJECT AT ST MARY'S JUNIOR SCHOOL

At a time of political, social and environmental turbulence, we are encouraging all of our pupils to be agents of social transformation. Our children already get involved in raising money for various charities and bringing issues that they feel passionate about to the attention of both local and national government e.g. the lack of free education in Uganda where we have a linked school.



This year the diocese has challenged church schools to learn from history, and develop new ethical practices that promote peace and unity for the future. Next year marks the 75th anniversary of the end of WW11 and the liberation of Auschwitz: a poignant reminder of the need to learn from the past and to work towards a world of peace, reconciliation and unity. Our project

will culminate in a display of **Peace Poles** at **Winchester Cathedral** which will then travel around the diocese – you may have seen the Bee Canvases at the church this year.

Our project will commence on **Holocaust memorial Day (27th January)** and end on the **17th June** at the **Leavers' Service at Winchester Cathedral**. We would like to ask the whole community to join us in this project; it would be great to see Peace Poles popping up around the village in both homes and businesses. Traditionally these are made from fence posts but they can be any size or shape. The only requirement is that on one side the words: "May Peace Prevail On Earth" should be included, otherwise you are free to let your creative juices flow!

See the website **www.peace-pole.com/make-your-own** for some ideas to get you started. We would love to see the results of your artistic endeavour – so please send us a picture of your completed pole: **adminoffice@st-marys-jun.hants.sch.uk**



24hr Airport Transfers

Professional Door to Door Service

"Reliable, friendly transport solutions from a local company you can trust"

07747 771906

www.basingstokeairports.co.uk

Departures



Fabio and Kat have moved to their new Dental Centre

Call for a free of charge consultation

- IMPLANTS •DENTURES
- CROWNS & BRIDGES
- HYGIENE •WHITENING

New patients are welcome

Implant Dental Centre
Denture Studio
and Dental Laboratory



The Loddon Business Centre,
Unit Q, Roentgen Road, Basingstoke, RG24 8NG
www.italdent.co.uk tel. 01256 355 268

Lee Quinlan



Kitchen

&

Bathroom Fitter



You buy it and I'll fit it!

"One stop" service for accompanying:
Plumbing, Tiling, Plastering,
Flooring & Woodworking

Electrical Work



01256 811830

email: enquiry@leequinlan.co.uk
web: www.leequinlan.co.uk



WESTPORT GREY

BUILDING CONTRACTORS

01256 636511

Extensions | Loft Conversions | Renovations | New Builds



WWW.WESTPORTGREY.CO.UK

Westport Grey Ltd. - Registered in England - No. 6216684

BUILDING YOUR DREAMS

BASING ROYALS FC

Basing Royals FC is proud to have retained its FA Charter Standard status for a second season! Following its annual health check, the local youth football club has once again been recognised for offering positive football environments where children can develop their skills,



keep fit and enjoy playing as part of a friendly, inclusive community. This award is given to clubs and leagues rigorously adjudged to be well-run and sustainable – and which prioritise child protection, quality coaching and implementation of the Respect programme.

The club now has five teams playing across three age groups U11/U10/U8. Spaces are available for next season. Please get in touch for more information at www.basingroyalsfc.co.uk – thanks as always to our sponsors, Eden Motors, ASUS and the ongoing-support of Old Basing Royal British Legion.

LINGUASTASTIC LANGUAGE SCHOOL

Happy 2020 everybody! Did you know that in Italy, people like to exchange gifts at New Year? Different gifts have different meanings. Honey for example, signifies sweetness and peace; gold and other precious metals are believed to bring prosperity and lamps are to illuminate the year. Another tradition in Italy is to wear red underwear on 31st December. Red is considered a lucky colour which brings “allegria” (cheerfulness) and consequently good fortune. Italians also give the gift of red underwear, to wish great fortune and a rich and satisfying year ahead. *For the full article go to www.basinga.org.uk*

THE TOPIARY HAIR & BEAUTY

Hundreds of local businesses attended the **Inspire Business Awards Dinner** on **21st November** at **The Hampshire Court Hotel**. **INSPIRE19** showcase regional businesses and centre around an outstanding awards ceremony to promote the continued success of the regions businesses and growth of the local economy.

We are pleased to report that **The Topiary Hair & Beauty** won the prestigious '**Small Business of the Year Award!**' **Matt** and **Laura Haystaff** from the parish, opened the Old Basing branch, located on The Street, back in 2004, and their newest location in Kingsclere Road, Houndmills, just 24 months ago. Laura said “We had some stiff competition and were proud to of been selected top three of the North Hampshire Awards, but we won! It was our year! We are so proud of our team and both salons and beyond thankful to our customers for allowing us to gain this accolade! Without their support and love of what we do we wouldn't be where we are.”

The evening was a huge glamorous party with 500 guests, lots of champagne to celebrate the huge success of many winning Basingstoke businesses.

Trusted since 1802
HENLEY-ON-THAMES | HAWLOW | BASINGSTOKE

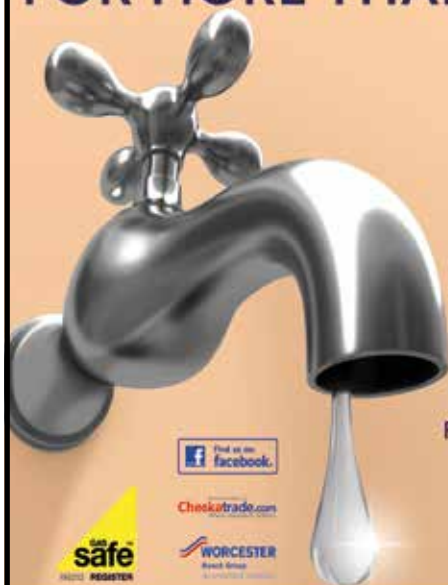


sales • lettings & management • commercial • development • rural

Residential Sales - **01256 840077** Lettings - **01256 337100**

www.simmonsandsons.com • 12 Wote Street, Basingstoke, Hants RG21 7NW

FOR MORE THAN JUST A LEAKY TAP



Niall Catlin
PLUMBING & HEATING

EST. 1991

Leaky taps to full bathroom installation
Power flushing | Water softeners | Hot water cylinders

Boiler breakdowns, repair and servicing
Boiler replacement | All allied trades
All aspects of plumbing and heating



Checkatrade.com



WORCESTER
Boiler Group

www.niallcatlin.co.uk

01256 818086 | 07774 741021

Serving Basingstoke for over 35 Years



Showroom

The old Station Andover Rd
Oakley Basingstoke RG23 7HA

Tel: (01256) 782070

OPEN 9am - 5pm MONDAY - FRIDAY CLOSED WEDNESDAY

SATURDAY 10am - 4pm

VINYL, WOOD, CARPETS, LAMINATE,
FURNITURE FOR THE DINING ROOM, LOUNGE, BEDROOM
AND STUDY

Range of Accessories and
Hand Made Jewellery.

www.oakley-furnishing.co.uk

**CARPET EDGING SERVICE
ALSO AVAILABLE**

Rugs Made Your size

Many Items in stock for Fast Free Delivery



British made Beds Back on Show Free Delivery Approx 1 week

LODDON

WINDOWS & DOORS

Local Family Run Business Established for over 35 years



GREAT RANGE INCLUDING:

Conservatories | Windows | Aluminium Bi-fold Doors | Composite Doors

- ✓ Quality UPVC Windows and Conservatories
- ✓ Attention to Detail - Local Recommendations
- ✓ Competitive Prices - Free Quotations
- ✓ 10 Year Guarantee - FENSA Registered

Tel: 0118 9815440 | 01256 464304 (evenings) | 07831 200613 (mobile) | www.loddonwindows.co.uk

NOTICE FROM OLD BASING ROYAL BRITISH LEGION



I am pleased to announce that so far this year we have collected **£20,833** for the **Poppy Appeal**, thank you everyone for your generous donations.

It's spring cleaning time and Old Basing Royal British Legion can convert your old clothes, shoes, foreign or pre-decimal coins into Poppy Appeal donations.

I have collection bags for clothes and coin collection buckets at the Legion Hall in Crown Lane and would welcome your donations. When you have some to donate please contact either Tracey or Kyle Merritt after 5pm at the club or myself and we will be happy to see you. All proceeds go to the Poppy Appeal.

If you have any questions please contact me, **Hon Poppy Appeal Organiser Tim Russell**, either tel. **07772 883964** or email: **Hampshire.chairman@rbl.community**

THE VILLAGE CAFÉ

The Village Café, your local volunteer-run café for the community of Old Basing and Lychpit, opens on **Friday afternoons from 2 to 4:30pm** in the **Parish Room at St Mary's Church**. Here we are at the start of a New Year and a new decade, we wish you all a very happy New Year and hope to welcome you to the cafe over the coming months.

As you know, the café donates all profits made to a chosen charity, which changes every few months. At the start of this year however, we have decided to use all profits made for the good of the village. Our aim is to raise enough to buy an **AED (Automated External Defibrillator)** which will be installed at the church. For those who are unsure what an AED is, it is used to help those experiencing sudden cardiac arrest. It's a sophisticated, yet easy-to-use, medical device that can analyse the heart's rhythm and, if necessary, deliver an electrical shock, or defibrillation, to help the heart re-establish an effective rhythm. These devices are safe and easy to use, but more importantly, lifesaving. We will ensure the device is installed in a practical, easy to reach place external to the church building. We are lucky enough to have a very knowledgeable volunteer who is able to provide any training required once the device has been bought but full instructions are always available with all AED's. We feel this is a really worthwhile addition to the village and will continue to use our profits towards the purchase and installation of a device until we have reached the target required. The cost will be around the £2,000 mark and I'm sure we will attain this thanks to the support of you all. We have spoken to the church about these plans and have their full support.

Over the coming months, the café will once again, host pop-up visits from local business and there may be a few special events too! Watch this space for future details. There are a few dates that the café will be **closed – 14th and 21st February, 10th and 17th April**. These dates coincide with half term school holidays and Easter.

For our customers with young children, we have recently bought a couple of high-chair cushions, with restraints that can be used on our chairs to keep your children safe and comfortable. We look forward to seeing all our customers every week so pop along and see us on a Friday afternoon, we always have scrumptious homemade cakes, warming tea and coffee, and a friendly welcome for all.

Deborah Thorne

JANUARY IN YOUR GARDEN

You never can be sure what the weather is going to be like, whether we will get a repeat of the 'Beasts From The East' from past winters or not, but if we do, be prepared to be on constant snow patrol, especially if you have large coniferous trees or a greenhouse, snow must be brushed or knocked off as soon as possible to avoid damage due to excessive weight.

But let's think positively. The cold weather will not come as harshly as recent winters, and we will be able to get out into the garden. There is much planting to be done, Raspberries, Gooseberries and currants can be planted, as well as Roses, so long as the soil isn't frozen or too waterlogged.

If you are thinking of growing peas this year, and would like them earlier than usual, place a cloche over the soil to allow it to warm up (tip: if you had a real Christmas tree, the stripped down branches can make an excellent pea support). *For other uses for a used Christmas tree see the article from the Hampshire & Isle of Wight Wildlife Trust on page 13.*

The most pleasing course of action is of course to stay inside where it is warm! If you need an excuse to do so, turn your mind to browsing the seed catalogues and online shops. As well as the usual varieties, why not have a look for some more exotic or newer species. Pluots are a mixture between a Plum and an Apricot, and do well in the south of England. Self-fertile varieties are available too. If you're feeling adventurous try a Medlar tree. Medlars are ornamental, flowering trees with pretty blossom, good autumn colour and fruits which are edible, although not to everyone's taste. Their fruit is tart if eaten raw, but makes pleasantly flavoured jellies or can be used in desserts. Left to soften the fruit mellows and is a traditional, if unusual, treat.

If you are lucky enough to have an electric propagator then plant Tomatoes, Aubergines, Chillies and other crops that need a long hot growing season, providing you have an indoor area that receives a lot of light to pot onto. Keeping them starved of light as they grow will result in leggy, useless plants.

OLD BASING ALLOTMENT AND GARDEN SOCIETY

This month the **allotment shop** will be open on **Sunday, 12th January**. Memberships will be due for renewal so please pop along and pick up your new membership card which includes a Suttons Seeds discount code and the ability to purchase from our shop, all for only **£5 a year**.

We held our annual **AGM** on **24th November** at the Parish Council tea rooms. Maurice Bates decided, after numerous years of service to the committee, that it was time for him to step down. We would like to thank him for all that he has contributed and for the many roles that he has held over the years.

If you would like to find out more about the committee, become a member or read the minutes, you can find them on our website: **www.obags.uk**

For our Facebook page go to **www.facebook.com/oldbasingallotments**

Tracy Braybrook

NATURE NOTES FOR JANUARY

It is always odd writing for sometimes a month in advance of a date you might read said article but when it's a whole New Year now that is weird! I do hope you all had a great Christmas and were perhaps given a camera nest box or feeding station so that you may watch our feathered friends in action. If indeed you now possess either and are wondering about location then any nest box should be positioned so the entrance hole is facing north or east and unless it's a Robin box, it should be at least six feet, preferably eight feet, off the ground.

Bird food table and feeding stations should be located close to trees, hedges or large shrubs which offer the birds cover in case of a quick getaway! If you need any advice with this or foodstuffs please call me.

The winter months can offer some superb spotting opportunities if one is prepared to suffer the wet or cold and Stephen Thairs perambulations took him to Tundry Pond near Dogmersfield, so whilst not being 'quite local' the Great Egret was a rare sighting. Now breeding on the open spaces of the Somerset Levels this large white heron isn't that rare in the UK but certainly is much less common than its 'baby brother' the Little Egret which have been hereabouts for a decade or more.

As with every New Year, I will keep everything crossed that we might be lucky enough to see some Waxwings that will arrive along the East coast about now, along with thousands of Redwings. The trouble is that these Scandinavian beauties are seeking bright red berries on which to gorge but the pesky Woodpigeons have already taken half of our local cotoneaster and pyracantha fruit!

The winter also brings other hazards on the roads other than ice or snow. Deer start to think about the rut from late October to mid January so collisions with traffic, particularly around dawn and dusk, become more likely than ever. Old Basing's countryside is quite densely populated with Roe Deer and Muntjacs, which I have seen for myself recently as I have been beating for a local shoot every two weeks. On each occasion we have flushed 10 to 12 deer and whilst they are of course off limits to the guns, the deer don't know that and its jaw dropping to see them speed off from under one's feet to hundreds of yards away in seconds, clearing every obstacle that they meet. A fox legged it away in a field near Poors Farm last week and I also spooked a Snipe which shot skywards at a rate of knots and altitude that made it completely safe.

Finally, November's Nature Notes dealt with the increase in spider activity around the village (yes, I'm sorry I've mentioned that word again)! Well, **Pete Wooldridge** saw my notes and took a few photos including the one which appears here of a **False Black Widow** living happily in his garage. Though these little arachnids aren't deadly they might concern some so I'll spare telling you where Pete resides in case of widespread panic in the region of Park Avenue. Doh! Stupid boy Pike.



Rick Bourne

Don't forget to send all **nature-related photos** to rickbourne@yahoo.com or naturenotes@basinga.org.uk or tel. **01256 321108** for news. For all your **bird food** requirements, order it from me at '**Bird Drop-ins**' use the former email address or ring me on **07900 648675** to place an order or get a form.

DIARY DATES FOR JANUARY

For details of services and events at St Mary's Church and Old Basing Methodist Church see page 23

Fri 3	10.30am – noon	Ladies' First Friday Coffee Morning (7 Olivers Walk, Lychpit)
	2.00pm – 4.30pm	Village Café (Parish Room, St Mary's Church)
Sat 4	10.00am	PIOCC Working Party (meet church lobby, St Mary's Church)
Tue 7	7.30pm	Parish Council Meeting (Pavilion Committee Room, Recreation Ground)
	7.30pm	Old Basing WI Members own entertainment evening (Parish Room, St Mary's Church)
Fri 10		LAST DATE FOR COPY TO EDITOR (SEE PAGE 3)
	2.00pm – 4.30pm	Village Café (Parish Room, St Mary's Church)
Sun 3	11.00am – noon	Old Basing Allotment & Garden Society Shop (Riley Lane)
Thu 16	12.30pm – 2.00pm	Ploughman's Lunch (Parish Room, St Mary's Church)
Fri 17	2.00pm – 4.30pm	Village Café (Parish Room, St Mary's Church)
Sat 18	10.00am	Mill Field Work Party (meet lower path near entrance to woods)
Fri 24	2.00pm – 4.30pm	Village Café (Parish Room, St Mary's Church)
	7.00pm – midnight	Annual Burns Night Celebrations (Apollo Hotel, Basingstoke)
Sun 26	3.00pm	Basingstoke Deane Rotary 12th Charity Concert (The Anvil)
Mon 27		Holocaust memorial Day (start of Peace Pole Project)
Fri 31	2.00pm – 4.30pm	Village Café (Parish Room, St Mary's Church)

LOOKING AHEAD TO FEBRUARY

Tue 4	7.30pm	Parish Council Meeting (Pavilion Committee Room, Recreation Ground)
Fri 7	10.30am – noon	Ladies' First Friday Coffee Morning (10 Olivers Walk, Lychpit)
Sat 8	2.00pm	Old Basing Village Hall Jumble Sale (Old Basing Village Hall)
Sat 15	noon	Old Basing Carnival Senior Citizen Party (Old Basing Village Hall)
Sat 22	10.00am– noon	St Mary's Flower Arrangers Coffee Morning (Parish Room, St Mary's Church)

BASINGA EXTRA

A number of articles have been in competition for a place in this month's printed magazine. For those for which space couldn't be found go to www.basinga.org.uk

Basingstoke Blues Club

Basingstoke Civil Service Retirement Fellowship

Basingstoke and District Railway Society

Basingstoke Gang Show

Dragonfly Project

Linguatastic (full article)

Probus (Life in the Modern Army; Probus Looks to the Future)

- Loft ladders & loft hatches
- Boarding, Lighting & Insulation

CREATING SPACE THE EASY WAY!

MAJOR BENEFITS

- De-clutter your home
- Create up to a third more space
- Gain safe & easy loft access
- No mess, no fuss, no subcontractors

Call now to book a FREE survey & quotation

01256 688648



WWW.ACCESS4LOFTS.CO.UK



TRILBYS

BARBERSHOP & HAIRDRESSERS
EST 1991

**Now open in Belle Vue Rd
Old Basing.**
**Hairdressing for the whole
family.**
01256 357333



BLUE WILLOW COACHING

Career and Life Coaching

- Do you feel stuck in your professional life and need support to work out - what's the right way to go?
- Do you want to learn how to challenge your "inner critic" and build your emotional resilience?
- Do you want to increase your confidence and presence?
- Do you want to get in touch with who you are and what you truly want to do?

Siobhain Whitty is a professionally trained executive and life Coach, certified with the International Coach Federation and Academy of Executive Coaching.

Book a **FREE 30 minute, no obligation sample session**

Contact Siobhain at:

info@bluewillowcoaching.co.uk

www.bluewillowcoaching.co.uk

07894 209 698

*Conversations with
a purpose*

M.C.PEGG

Plumbing, Heating & Gas Services

Local & Reliable

All Plumbing and Heating Installations
Gas Safe Registered - 195010

Bathroom Suites/Showers
Gas Safety Certificates
Boilers, Hot Water Tanks,
Heating systems,
Servicing

FREE ESTIMATES



Tel: 01256 308462

Mob: 07973 217020

Email: matthew.pegg1@btinternet.com

Spencer & Peyton Ltd

Established 1961

3rd Generation
family owned
and run Funeral
Directors and
Monumental
Masons

24 Hours

**Our family
serving your family
for over 55 years**

**380 Worting Road
Basingstoke, RG22 5DZ
01256 323165**

(Flower Girl Florist on site)

**7 London Road
Hook, RG27 9DY
01256 761717**

Trading Standards approved

**Pre-paid funeral plans
discussed without obligation**

spencerandpeyton@btconnect.com

www.spencerandpeyton.co.uk



10
YEAR
GUARANTEE



NJP Heating Services

0% finance

on all Worcester Bosch boilers

complete with up to 10 year guarantees on all
Worcester Bosch boilers and controls

Contact us today for your free quote

**07717 741999 or
01256 782202**

nick@njpheating.com | njpheating.com



Basing Pedicare

Fully qualified mobile Foot Health Practitioner

- Toe Nail Cutting
- Corn And Callus Management
- Diabetic Foot Management
- Verruca Care



Contact

Malinda Snook MCHP MAHP
to make your appointment-
I visit you in your home!

07751 474322



Prime Improvements
Home & Garden

07841 532 878

Painting & Decorating
Handyman Jobs
Tiling
Flooring

Grass & Hedge cutting
Garden Clearance
Fencing & Decking
Sheds & Cabins

www.primeimprovements.co.uk

The Complete Tree Service

- Residential & commercial work
- Tree removal, thinning & lifting
- Stump removal, scrub clearance & hedge trimming

Over 25 years experience -
fully trained, insured & certified.
We guarantee we can help.
Call for professional, friendly advice.



Teams all over Hampshire, Surrey,
Sussex and the South:

01256 763 162

www.cedardale.co.uk

Checkatrade.com
Where reputation matters





High quality and friendly MSK,
Back Pain and Neck Pain service
with professionals who listen

Annette and Gordon Linscott

35 Years in Basingstoke
Now on your doorstep

East Barn, Lychpit Centre
01256 466 666

www.spineteam.co.uk



Shops

**Funds raised in our shops support the
hospital and its activities.**

- We are pleased to receive good quality donations.
- Come and visit us in Old Basing.
- Volunteer enquiries to work in the shop are welcomed.

**We are open 10.00am to 4.00pm
Monday to Saturday.**

At 42 Belle Vue Road

**Our other shops are in:
Hartley Wintney - Millbank House, High Street
Odiham - 71 High Street**



SERVING THE PEOPLE OF BASINGSTOKE & NORTH HAMPSHIRE SINCE 1968

**FINANCE
NOW
AVAILABLE**

Please ask
for details

**DESIGN,
SALES & FULL
INSTALLATION
SERVICE**

01256 363123 | twoguys.co.uk

ARMSTRONG ROAD, DANESHILL EAST, BASINGSTOKE, HAMPSHIRE RG24 8NU

● BASINGA

EDITOR: Colin Follett, 101 The Street, Old Basing, RG24 7DA 01256 326909

ADVERTISING: Email: advertising@basinga.org.uk

SECRETARY: Graham Merry, 40 Linden Avenue, Old Basing, RG24 7HS 01256 463908

TREASURER: Andy Groves, 30 Pyotts Copse, Old Basing, RG24 8WE 07918 644187

DISTRIBUTION:

Old Basing Area: Peter Watson, 19 Priory Gardens, Old Basing, RG24 7DS 01256 352299

Lychpit Area: Andree McLean, 6 Pimpernel Way, Lychpit, RG24 8SS 01256 819006

WEBMASTER: Brian Baker; email: webtech@basinga.org.uk 07955 743579

● OLD BASING & LYCHPIT PARISH COUNCIL

CLERK: Sandra Tuck 01256 462847

OFFICE AND HOURS: The Pavilion, The Recreation Ground

Monday to Thursday 10am to noon

● CHURCH INFORMATION FOR THE AREA

Church of England (Parish of Old Basing & Lychpit)

VICAR: Revd. Heather Leppard, The Vicarage, Church Lane, Old Basing 01256 363612

Email: vicar@stmarysoldbasing.org.uk 07745 731729

ADMINISTRATOR: Debbie Filer 07541 698235

CHURCHWARDENS: Tricia Renwick 01256 326155

Ian Kershaw 01256 355500

Regular Services at St Mary's Church, Old Basing

SUNDAY: 8am Holy Communion; 9.30am Sung Eucharist and Junior Church;
5.30pm Evening Service

OTHER DAYS: Wednesday 10am Holy Communion

*Changes to the regular service pattern and other weekday services are shown
in the weekly news-sheet, a copy of which is displayed on the noticeboard in
the church porch*

Old Basing Methodist Church

MINISTER: Revd. Alison Parker 01256 465064

07973195566

SUNDAY SERVICE: 10.30am Morning Service

Roman Catholic

PRIEST: Fr Christopher Rutledge 01256 465214

St Bede's Church, Popley Way, Basingstoke

SUNDAY MASSES: 9am, 11am and 6.30pm

need a **painter** and **decorator**?



- professional
- friendly
- affordable
- experienced
- reliable
- fully insured

pscdecoratingservices

call us today for a free no obligation quote
01256 334852 07919 358050
pscdecoratingservices@gmail.com

Infinite Harmony Hatha Yoga

4 classes to choose from:

Gentle Chair Yoga

If you have mobility/injury concerns then this is the class for you. All yoga is done on a chair and using props.

Monday's

14.00 - 15.00

Lychpit
Community Hall

Relax Yoga

This class is for all levels of ability and uses postures to help you relax and deepen your yoga practice.

Tuesday's

19.15 - 20.15

St Mary's
Church Hall,
Old Basing

Sunday Morning Yoga

This class is for all levels of ability and focuses on strength and flexibility.

Sunday's

09.15 - 10.15

Lychpit
Community Hall

Sunday Night Satsang

This is deep relaxation yoga. You will be led through a series of gentle yoga postures followed by an extended guided meditation.

1st Sunday

of the month

18.30 - 19.30

Lychpit
Community Hall



Contact Vicky on 01256 910108 or
email vicky@infiniteharmony.co.uk
Don't forget to book your space.



For more information visit www.infiniteharmony.co.uk



Tree Surgeon

01256 763859

07766 256788

TreeSceneArb@gmail.com



TREE SCENE
ARBORICULTURE

Adrian Stanley

BSc(Hon) AA Tech Cert

Qualified & experienced
arborist

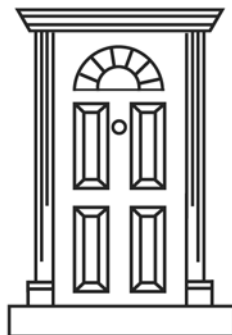
- All aspects of tree work & stump grinding
- Fully insured (£5m) - free estimates
- Logs supplied

Basing Electrical Ltd

For all your electrical needs.
Both in and outside your home.

Part P Approved NIC EIC Registered.

Call John on 07793748360



DAVID MATTHEWS

Carpentry & Joinery Services

Chineham, Basingstoke. Tel: 01256 476207

- ❖ Doors ❖ Wardrobes ❖ Kitchen Design Service
- ❖ Custom Made Units



Join **FREE** and *one* **Month FREE**

Discover Beechdown, The Club For Every Generation

A place to exercise, to start a new hobby, to relax and unwind or to enjoy a great coffee.

Enjoy full access to...

- State-of-the-art gym with NEW cardio machines
- Regular personalised exercise programmes
- Tennis, Squash, Badminton with coaching included
- Luxurious pool and spa
- 800+ monthly exercise classes
- Creche and childcare for 0-8 years
- 25+ kids activities for all ages
- Brasserie with regular family events
- Welcome pack worth £75 upon joining

Visit soon, offer ends 31st January 2020.

Terms and conditions apply.



Visit our website
beechdown.co.uk

Call us on
01256 36 22 22

Find us at
**Winchester Rd
RG22 4ES**