

January 2022

BASINGA



James Brown



Old Basing and Lychpit Parish Magazine
www.basinga.org.uk

Join **FREE** JANUARY

**LOSE WEIGHT...GET FIT...
HAVE FUN...FEEL GREAT**

With support, advice and motivation to help you meet your goals at Basingstoke's premier health club.

- **Fitness and Socials**
- **Jacuzzi, Saunas, Steam Rooms**
- **Sports for the whole family**

FREE
branded
workout towel*
**+vouchers
worth £70**

pop in
anytime
for a no obligation
tour!



beechdown
health and fitness



01256 36 22 22



beechdown.co.uk



Winchester Rd, Basingstoke RG22 4ES

* Terms and conditions apply

JANUARY NOTES AND NEWS

The **front cover photo** is of a magical scene of **St Mary's in the Snow** by **James Brown**, taken after the light dusting of snow we had in early December. Maybe he can return to take the same shot after a heavy snowfall this month? You never know?

CONTRIBUTIONS TO THE BASINGA

We welcome both regular and occasional items for the Basinga. The very **last date for copy** to the Editor for the **February edition** is **6pm on Monday, 10th January**.

Please use the forms on the **Basinga** website **www.basinga.org.uk** to get your dates, articles and letters to us (**see box on page 15 for further instructions**).

All advertising enquiries – classified, free adverts or inserts (flyers) can also be made via the website.

Don't forget that we only accept articles with about a 300-word maximum and articles are only published at the Editor's discretion.

PHOTOS AND LOGOS FOR THE BASINGA

If any reader would like to offer a **photograph of the village environment** we would be happy to receive them, either for immediate use or to build up a portfolio of 'village views' that we can use. We now have a web form that you can use to send a photograph for the website archive and possible use in the magazine, go to **www.basinga.org.uk** and the form can be found on the '**Contributors Submission**' menu. Should you wish to submit multiple photos, or a photo is too 'large', they can be emailed directly to the **Editor**.

This feature should **NOT** be used for Free Ads or article photos, which can be attached to their own forms. We welcome **club** and **society logos**, with the option to use them within articles. Please send graphics to **editor@basinga.org.uk**

YOUR VILLAGE HALL NEEDS YOU!

Old Basing Village Hall is desperately looking for volunteers to become members of the **Management Committee** to help maintain the hall and keep it to the standards expected and required. This is a wonderful asset to the village of Old Basing and the Committee, due to its declining numbers and ageing members, are now seeking additional volunteers.

The Committee meets approximately **six times per year** and generally hold two jumble sales per year (usually February and September) for fundraising.

If you are interested in joining our committee or would like to understand how the hall is run please contact any of the Committee members listed below for further information.

We sincerely hope we can encourage new members to join our Committee.

Committee members:

Don Grassi (Chair)

email: **donaldgrassi@hotmail.co.uk**

Sheena Grassi (Vice Chair)

email: **sheenagrassi@hotmail.com**

Sue Ingleby (Treasurer)

email: **sueingleby@hotmail.com**

NEWS FROM BASING HOUSE

I think that the **2021 Christmas Fayre** was considered far and away the most successful yet, and we all wish to send out thanks to the near 1,000 visitors who turned up over the two days, to the 40-odd stallholders, the choir, the farm animals (and their attendants) and the English Civil War Society who provided the historical touch on the Sunday. And, of course I mustn't forget the Mayor of Basingstoke.

We are now planning for the summer and Christmas markets next year and will be making sure that we learn the lessons of where the 2021 markets could have been run better, and what else can be done in 2022. The geography of the area around the Basing House site, with the road splitting the site, the river, the railway and the Common being so close can make some aspects of running events very difficult.

We also had very successful Halloween Ghost Walks this year, which featured a trip



through our Tudor tunnel for those brave enough to face a 100-yard crawl in a three-foot-high tunnel. It has been difficult to open the tunnel over the last two years and many visitors ask whether it can still be used. Halloween showed that under the right circumstances it can.

The ruins are now closed until 'Easterish', and a wide range of events are being planned for next year, and at least one of those is likely to be truly spectacular. There will be more about these in next year's Basingas, as the details become more concrete.

I'm sure that the staff, the other welcome volunteers, and our gardening volunteers would all like to wish you all a Happy New Year.

Andrew Howard, tel. 01256 327014

DO YOU HAVE A WILL IN PLACE?



CLARKE
& SON
Solicitors

A Will is quite possibly one of the most important documents you will ever sign.

Call now to book a free Will healthcheck or to start the process of making your Will.

Clarke & Son Solicitors LLP

Manor House 8 Winchester Road Basingstoke Hampshire RG21 8UG

T: 01256 320555

www.clarkeandson.co.uk

M MARTIN
MATTHEWSON

Call Us:
01256 364753

ALL MAKES SERVICING & REPAIRS
THE VOLVO & NISSAN SPECIALISTS



MOT TEST
CENTRE



Visit: www.garagebasingstoke.co.uk

FREE Local Collection & Delivery T&C's Apply



Unit 1 Pensdell Farm, Farleigh Road, Cliddesden, Basingstoke, Hants, RG25 5HA

www.basingtutors.com

Basing Tutors

- One-to-One Tuition
- Friendly, personal approach
- Professional tutors

Full diagnostic assessment
with no further obligation

Initial consultation
free of charge

Tel: 01256 470948

Email: admin@basingtutors.com

Local
Tutors
For Local
People



EXCLUSIVE OFFERS

for all magazine readers

Visit Basingstoke's most
recommended bathroom &
kitchen supplier and installer...



Checkatrade.com

A1 Bathrooms & Kitchens

- Fully employed fitters
- 24/7 Emergency callout
- Project managed installation
- Comprehensive insurance & labour guarantee



Ask to speak to any of
our happy customers!

Your Dream, Our Creation | www.a1bathrooms.co.uk

SHOWROOM: Unit 3, Cartel Business Centre, Stroudley Road, Basingstoke RG24 8FW T: 01256 810460

OLD BASING BOILER SERVICES



Boiler Installations

Servicing and Repairs

Unvented/Vented Cylinders

Power Flushing
of Heating Systems

Free Estimates

No Call Out Charge

Landlord Certificates

Fully Insured

01256819521 **Bill Martin** 07990514472

www.ldbasingboilerservices.com

Keeping you Gas Safe



**CONTACT BASINGSTOKE
01256 325575 ANYTIME**

**ARE YOU A WORKING WIFE?
AND TIRED OF COPING WITH THE HOUSEWORK?**

WE PROVIDE

REGULAR/HOUSE MOVE/END OF TENANCY CLEANS
IRONING, OVENS AND CARPET CLEANING
OVER 25 YEARS IN BASINGSTOKE



RING US TODAY FOR A FREE BROCHURE

01256 325575



CHEQUERS

Independent Estate Agents



**Thinking of Selling in Old Basing/
Lychpit in 2020 or on the market
without results*?**

Choose an agent one step ahead of the rest...

**Call 01256 810018
and we'll get you moving**

successfully selling property for over 28 years....

www.chequeresestateagents.co.uk

T 01256 810018 E sales@chequeresestateagents.co.uk

* If you have instructed another agent on a sole agency and/or sole selling rights basis, the terms of those instructions must be considered to avoid a possible liability to pay two commissions.

We wish all residents a happy and healthy New Year.

LYCHPIT CENTRE CAR PARK

The bottle bank and recycling bins should all by now have been removed from the waste disposal area at the rear of the Lychpit Centre Car Park and the space is available for parking. Please do not leave your empty bottles there for someone else to clear away; if you need an additional bottle box, particularly after Christmas and New Year celebrations, we still have a supply in the Parish Office for anyone wishing to call in to collect.

COUNCILLOR CO-OPTION

We are still seeking a Councillor to represent Old Basing. If you are interested and wish to support your community in this way, please contact the Parish Office.

LOCAL DEVELOPMENT THREAT

It is not too late to register your concerns regarding the proposed threat of development in the following areas:

- | | |
|-----------|---|
| 1) OLD001 | Land on the western boundary of Old Basing and Lychpit
(450 houses proposed) |
| 2) OLD002 | Lodge Farm – land next to the area above
(900 houses proposed) |
| 3) OLD007 | Hodds Farm – land on the southern boundary of Old Basing
(800 houses proposed) |

Your Parish Council intends to strongly refute the Borough Council's proposals and is seeking support from the community. Please email **blade@oldbasing.gov.uk** to let us know your views.

CLIMATE CHANGE

If you left your contact details after the climate change meeting of 13th November, and we haven't got back to you, could you please email **stephen.brown@oldbasing.gov.uk** as a few email addresses have unfortunately been returned as not working.

And finally.....

If you have a real Christmas Tree don't forget to recycle it. Garden waste customers can leave their trees for collection with their garden waste container. All decorations should be removed and trees over six foot should be cut in half.

PARISH COUNCIL MEETINGS

The next two **meeting dates** are **Tuesday, 4th January**, and **1st February**, at 7.30 pm.

Parish Clerk: **Mrs Sandra Tuck**

Deputy Clerk: **Mrs Kate Hope**

Address: **The Pavilion, Recreation Ground, The Street, Old Basing, RG24 7DA**

Telephone: **01256 462847**

Office Hours: **Monday to Thursday, 10am to noon**

Mobile: **07507 514498 (emergencies only)**

Email: **clerk@oldbasing.gov.uk**

Website: **www.oldbasing.gov.uk**



HORIZON SOUND & VISION

Family Run Business Est 1988

- **Aerial & Dish Installations**
Freeview, Freesat, Sky & European
- **Freeview, Sky or Freesat on additional TVs**
Magic Eye control & HD. Phone & Ethernet points.
- **TV Wall Installation**
Free site survey. System planning. Hidden cabling
- **Tuning & set up of your equipment**
Cable tidying
Weak/low signal improvement
- **WiFi Signal Improvement & Network Cabling**
- **CCTV Installations**
- **Audio & Speaker Systems**
Home, Outdoor & Workplace



Checkatrade.com
Where reputation matters

01256 841860

Visit us at Essex Road Basingstoke

www.horizonsoundandvision.co.uk

info@horizonsoundandvision.co.uk



**MIKE'S
GARDEN
SERVICES**

- General garden maintenance
- Landscaping and planting
- Garden clearances • Tree / hedge work
- Fence & shed work / treatments
 - Lawn mowing • Turf laying
- No job too small • Fully insured
- Logs, Kindling and De-icer deliveries
- Free estimates • Competitive rates

Tel: 01256 325015

mnm.chapman@talktalk.net

www.gardenerbasingstoke.com

AFFORDABLE CARE & SUPPORT
FOR ALL YOUR GARDEN NEEDS



The Water Softener Specialists



- Manufacturing water softeners for over 30 years
- Latest non-electric block salt water softeners
- New installations & repairs
- Advanced technology water filters for pure drinking water
- No call-out charge
- Based in Hook

**Fitted, fully reconditioned water softeners
from just £395 (includes warranty).**

Tele: 01256 768171

Mobile: 07836 247694

www.amsmayfair.co.uk

T&S

Tile & Stone Revival

Tile, Stone and grout cleaning specialist

**Professional deep cleaning
and sealing of all
natural stones and tiles.
Interior and Exterior.**

Dennis Buckland

T: 07834 787222

dennis@stonerevive.co.uk

INTERIOR

EXTERIOR

Painter's Pride



**EXPERIENCED HOUSEHOLD
PAINTER & DECORATOR**

NO JOB TOO SMALL

TEL: 01256 355356 or 07876 495657

**WE WISH ALL OUR
ADVERTISERS, READERS
AND CONTRIBUTORS A
HAPPY AND PROSPEROUS
NEW YEAR**

**Making your
home more
homely, all
year round.**



Call 01256 841522

riptonwindows.co.uk

LETTER TO THE EDITOR

A digger has appeared again in the field off Basing Road, adjacent to the Hampshire Clinic, suggesting that the housing development may soon take place. Walkers on the footpath across the top of this field will soon lose forever the fine views southwards over the Common to Crabtree Plantation and onwards to Hackwood Park. I therefore took some photographs yesterday. They do not do justice to the views (and the sun was well down in the western sky), nor are they able to convey the warmth you encounter in the field compared to elsewhere locally because of its southerly inclination. Sadly also the profusion of wild flowers, including many orchids, butterflies and other insects are absent, both because of the season and because the field has been mown.

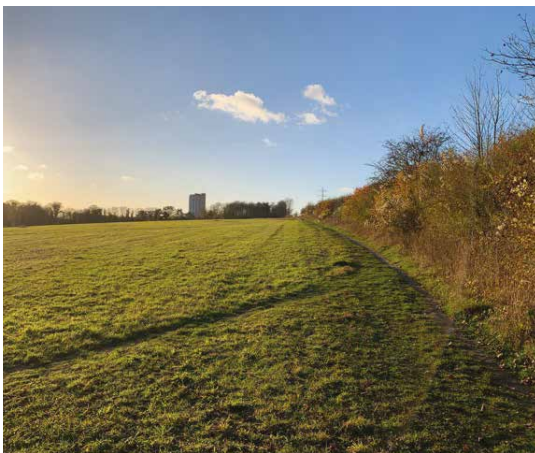
In descending order, the photographs show:

Top photo) the westerly view from the access in Swing Swang Lane showing the AA tower block

Middle) photo the easterly view from near the north-western end

Bottom photo) the southerly view over Crabtree and beyond.

Tony Vines (email address supplied)





All Seasons

Window & Driveway Cleaning

Domestic & Commercial
Window Cleaning Services

Additional services include :

- Driveway Cleaning
- Cladding / Signage Cleaning
- Gutter / Fascia Soffit Cleaning
- Conservatory Roof Cleaning
- Pure Water (NO CHEMICALS)



All Seasons

Window & Driveway Cleaning



Conservatory
Deep Cleans



Safe, Efficient
Ladder-Less Cleans



Refreshing, Driveway
& Pathway Cleans

Please Contact Steve :

01256 353727

info@allseasonswindowcleaning.com



www.allseasonswindowcleaning.com

Brewers
DECORATOR CENTRES

Kieder Teal from the Albany
Shangri-La Wallpaper Collection

Your choice for
paint and wallpaper
and the very best in free advice



138 Basingstoke Trade Park
Worting Road, Basingstoke
RG21 8BJ 01256 467373
basingstoke@brewers.co.uk

1 Whitney Road
Daneshill Estate, Basingstoke
RG24 8NS 01256 464745
basingstoke.east@brewers.co.uk

£20 OFF

When you spend

£100 or more ZX520BSB



5019646988929

£10 OFF

When you spend

£50 or more ZX510BSB



5019646988912

Valid until 31st December 2021 at Brewers Basingstoke only.
Terms and Conditions apply, ask in store for details.

Lamberts Plumbing Services

PLUMBING & HEATING CONTRACTORS

BOILER INSTALLATION & SERVICING
BATHROOM INSTALLATION & TILING
GAS SAFETY INSPECTIONS
ALL ASPECTS OF MAINTENANCE REPAIRS
NO JOB TOO BIG OR SMALL

Railside, Station Road, Hook, Hampshire RG27 9HT

Tel: 01256 783597 Mobile: 07501 559668

Email: lamberts_plumbers@yahoo.com www.lambertsinhook.co.uk

CONSIDER IT DONE!

**PAINTER
&
DECORATOR**

Call Graham:
**07494
294246**

Check out our
website:

[consideritdonepainting
decorating.com](http://consideritdonepaintingdecorating.com)



GUINEA COURT
DENTAL SURGERY

EXCEPTIONAL PRIVATE DENTAL CARE FOR ALL AGES

Achieve and maintain the best possible smile with our highly-skilled dentists and specialists all in one dedicated location.

- Come and visit Guinea Court for:
- General and cosmetic dentistry
 - Hygienist services
 - Teeth whitening
 - Orthodontics for adults and children
 - Invisalign®
 - Dental implants
 - Facial aesthetics
 - Specialist gum treatments

- Anti-snoring devices
- Sedation for nervous patients
- Emergency appointments
- Affordable Membership Plans
- 0% interest finance options, 0% APR Representative.

We are welcoming new patients. Call us on
01256 840141
to book an appointment
or visit our website.

21 - 22 Guinea Court, Chineham, Basingstoke, Hampshire RG24 8XJ

www.guineacourtdental.co.uk | reception@guineacourtdental.co.uk | 01256 840141

OLD BASING WI



Members welcomed Fiona Birchall to tell us some more Christmas stories at our December meeting. Fiona has visited us before and is always an entertaining speaker. We also enjoyed a festive mince pie with our tea and coffee.

Our **January meeting** takes place on **Tuesday, 4th January**, at **7.30pm**, in the **Parish Room, St Mary's Church**, and we will be making our own entertainment. After a short discussion about our plans for 2022 and the Resolutions to be put forward to the National Federation, we plan to have a game or two of bingo. The competition this evening will be 'your favourite piece of poetry', so come prepared with a short piece! Remember also that the flower table and the raffle will be back this month.

Members will also be looking forward to a festive meal at the Bolton Arms later in the month and the balance for this will be due at the meeting.

Full details of the WI in Hampshire and all other WI activities can be found by going to **www.hampshirewi.org.uk**

If you would like to join our long-running and thriving group, please contact our President, **Sue Stewart** by email at **oldbasingpres@hampshirewi.org.uk**

THE IVY CLUB

Well we finished the year on a high note celebrating with our Christmas party. It has been good being back together again and more gratifying as our membership has increased.

All are welcome. Just retired, looking for something to do on a **Wednesday afternoon** between **1.30 and 4pm**? Your help would be appreciated.

Looking to the future, sadly we are all getting older and a replacement team to run this lovely, friendly and happy club at some stage will be required.

We are **closed** now until **Wednesday, 2nd February**, We will be starting off 2022 with an afternoon of bingo,

The cost is only **£2 per week** for entry, refreshments and a raffle. What great value for an afternoon to be with friends and make new acquaintances. We shall be organising a few more outings next year, including one to the seaside. We look forward to seeing you.

Sue Wilson (Chairman)

OLD BASING & LYCHPIT GOOD NEIGHBOURS

We are looking forward to a healthy and happy new year when we hope you will avail yourself of our services. Please call **0333 044 0116** if we can help with transport for various appointments, collecting prescriptions etc.

We hope you have found our services useful. I am happy to report that we have now undertaken our 600th task! My personal thanks to our volunteers and we look forward to 2022.

Sue Wilson (Chairman)

Looking for independent financial advice you can trust?

We'll help you create, increase and protect your wealth. Our personal service is designed to build a shared understanding of your wealth objectives and to translate these ambitions into reality.

To find out more, please call

01276 34932

S4financial
SUPPORTING YOUR FINANCIAL LIFE



 01276 34932

 www.s4financial.co.uk

- * Family Wealth Preservation
- * Wealth Management
- * Tax Planning
- * Protection Planning
- * Retirement Planning
- * Mortgages

The value of investment can fall as well as rise. You may not get back what you invest. Your home may be repossessed if you do not keep up payments on your mortgage. There is normally a fee for advising on and/or arranging a mortgage, the precise amount will depend on your circumstances but we estimate that it will be £495.

R. LOVELOCK

HEATING & PLUMBING

ALL ASPECTS OF PLUMBING
INCLUDING

- BOILER FITTING • SERVICING & REPAIRS
- GENERAL PLUMBING

TEL: 01256 421138
MOB: 07383 064464
EMAIL: contact@rlovelockheating.co.uk



lsc
LOUISE SANDERS
OSTEOPATHS

Free car park
Emergency appointments
Home visits
Free advice on rehabilitation
Free advice on exercises
Free ergonomics advice

DO YOU SUFFER FROM.....

Back Pain, Sciatica,
Headaches,
Sports Injuries,
Shoulder Problems
Neck Pain, Joint Pain,
Elbow & Wrist Problems,
Muscular Strains

PJH
Window Cleaning Services
Local, reliable window cleaner
For a free, no obligation quote for
• Window cleaning • Facias
• Gutters • Conservatory Roofs
Please call Pete on
07762 616600
e-mail: pjhcleaning@gmail.com

OLD BASING
Old Basing Health Centre,
Manor Lane
Old Basing | Hampshire | RG24 7AE
01256 868 370

CLASSIFIED ADVERTISEMENTS



Piano Lessons

All ages and abilities

Beginners welcome

Qualified and experienced teacher

Philippa Ford 01256 470174



ADVERTISE IN THE BASINGA

For Contract, Classified and Leaflet Distribution

Contact advertising@basinga.org.uk

We ask for submissions to the magazine and website to be made via www.basinga.org.uk using the web forms:

Selection for Articles/Letters and Diary Dates will be found on the “Submissions” drop down and for Free Ads and Concession/Poster Ads on the “Advertise with us” drop down. Paid advertising enquiries can also be made from the same dropdown menu.

Submissions made via the forms now provide a common input for both the magazine and website and are automatically routed to the member of the team responsible for processing them. All submissions must be received by the 10th of the month (6th in December) previous to the magazine issue month.

If you have trouble finding the forms, you can of course contact us and we will advise.

Our Privacy Policy is available to read on the website which includes the GDPR requirements for publishing photographs.

Contacts for general enquiries and assistance:

Paid Advertising - advertising@basinga.org.uk

Magazine and Website - editor@basinga.org.uk

All Advertisements in the magazine and website are inserted in good faith and the Basinga Management Committee accepts no responsibility for any statement, omission or errors made by the advertisers; nor endorses the products or services advertised. The views and opinions expressed in the Basinga are those of the organisations, individuals and authors concerned and not necessarily those of the Basinga Management Committee.

ADVERTISE IN THE BASINGA

All sizes available:

Enquire by email to advertising@basinga.org.uk or visit www.basinga.org.uk on the 'Advertise with us' dropdown menu for Contract, Classified and Flyer Distribution details.

At no additional cost:

All adverts appear on our website.

Adverts can be changed throughout the year.

Contract Adverts can be linked to the advertisers website and to an optional, advertiser supplied, write up on their company and its activities and can include photos.



R.KNIGHT

JCB & PLANT HIRE

All Ground Work Undertaken

Fencing & Tree Work

Tel: 01256 324588

Mobile: 07703 458372

Groundworks | Footings | Driveways | Landscaping



07841 532 878

*For all your Home & Garden needs,
including:*

-  Fencing
-  Decking
-  Shed construction & Bases
-  Landscaping
-  New lawns
-  Artificial Grass

-  Painting & Decorating
-  Handyman Jobs
-  Tiling
-  Flooring



www.primeimprovements.co.uk



FREE ADS – BUY AND SELL

Note: All ads are processed in received date order. Ads not included this month will be entered in next issue, space permitting. If you do not want your ad to appear later, contact the Advertising Manager. Ads also appear on the website with photographs if available.

ARTIFICIAL CHRISTMAS TREE	£10	07900286747
---------------------------	-----	-------------

Artificial Christmas tree. Five foot. A few years old, but in good condition. We've upgraded to a newer version hence why we are getting rid of this one

KER-PLUNK GAME	£8	07900286747
-----------------------	-----------	--------------------

Ker-plunk game. Barely used, good condition. No longer required

FASTLANE RACING GIANT LOOP EXPRESS £20 07900286747

Fastlane Racing Giant Loop Express. Working slot racing track and cars. Brought by husband a couple of years ago and hardly used

THE HOBBIT JIGSAW	£8	07900286747
--------------------------	-----------	--------------------

The Hobbit, 1,000 piece jigsaw puzzle. New and unwrapped. Brought but never opened

UNICORN DREAMS JIGSAW £10 07900286747

Unicorn Dreams, 1,500 piece jigsaw puzzle New, unwrapped. Unwanted.

THE GREAT JOURNEY JIGSAW	£10	07900286747
---------------------------------	------------	--------------------

The Great Journey, 1,500 piece jigsaw puzzle New, unwrapped. Unwanted

SCALE MODEL HMS WARSPITE £25 07990602551

New un-opened 1/350 scale model model HMS *Warspite*. New, paints glue etc

HOTPOINT WASHING MACHINE £50 01256323092

Hotpoint Smart tec automatic washing machine, approximately four years old. Good working order. Buyer collects

CONCESSION ADVERTS

LADIES FIRST FRIDAY COFFEE MORNING

Why don't you come and join our small friendly group and enjoy a cup of tea/coffee and a biscuit at the home of Mrs Dusty Brough, **7 Olivers Walk, Lychpit, on Friday, 7th January**, and Mrs Christine Stuart, **44 Lambs Row, Lychpit, on Friday 4th, February**. Both days **10.30am to noon**. For further information tel. **Sheila Stone**, tel. **01256 350238**.

PLOUGHMAN'S LUNCH

Ploughman's Lunch at the Parish Room, St. Mary's Church, on Thursday, 20th January, 12.25pm. It is important to book in advance as numbers are limited. Telephone **07946 596778** after **Saturday, 1st January**, to secure a place.



DESIGN & BUILD, PLANTING, DECKING, FENCING
TURFING, PATIOS, DRIVEWAYS & MAINTENANCE

FULLY INSURED & CRB CHECKED

CONTACT JONATHAN FOR A FREE QUOTATION

01256 412723 - 0771 7214521

E: info@jcooklandscapes.co.uk

www.jcooklandscapes.co.uk

To advertise here contact
advertising@basinga.org.uk



Fay Curtis

Diploma in Foot Health, MCFHP, MAFHP.
Member of the British Association of Foot Health Professionals.

Foot Health Practitioner

Professional foot care in the comfort of your own home

- Toenail cutting
- Nail condition treatments
- Corn and Calluses
- Dry and cracked heel remedies
- Verruca treatment
- Diabetic foot care and advice
- Relief from other foot-related conditions

To book an appointment call

07780 664410

www.faycurtis.co.uk



Martin Cole
Plumbing Limited



- Heating Systems • Boiler Replacements •
- Cylinder Replacements • Un-vented Systems •
- Radiators • Pumps, Motorized Valves • Showers •
- Thermostatic Radiator Valves • Water Softeners •
- Bathroom, Ensuite + Cloakroom (complete installations) •
- Household Plumbing Repairs • Taps •
- Ballvalves • Washers • etc. •



Tel: 01256 352419

Local Plumber

martincole@btinternet.com

B&M FENCING

GARDEN & LANDSCAPE SUPPLIES

- | | | |
|---------------------|----------------------|--------------------|
| • Panels (3' - 6') | • Reclaimed Sleepers | • Sharp Sand |
| • Trellis | • Softwood Sleepers | • Building Sand |
| • Concrete Post | • Oak Sleepers | • Ballast |
| • Closeboard Panels | • Decking | • Scalpings |
| • Natural Sandstone | • Rolawn Turf | • 10mm Gravel |
| • Paving Slabs | • Topsoil | • 20mm Gravel |
| • Block Paving | • Landscape Bark | • Decorative Stone |

Delivery Service Available

Mon-Fri
7.45 - 5pm
Sat 9am - 5pm

01256 762739

Fencing
Fitting Service
Free Estimates

www.bmfencing.co.uk

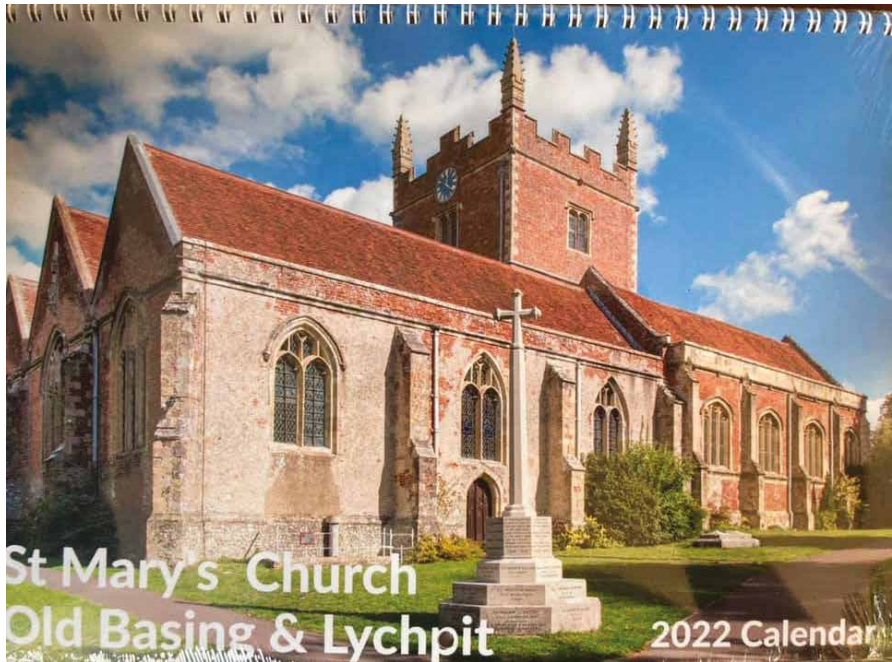
Reading Road, Hook, Hants, RG27 9DB

enquires@bmfencing.co.uk

ST MARY'S CHURCH 2022 CALENDAR

St Mary's Church has produced a beautiful **calendar** for **2022**. The cost is **£9.99** and they are for sale at the church after the **Sunday 9.30am service**.

You can also reserve one by contacting the Administrator, **Debbie Filer**, by email at admin@stmarysoldbasing.org.uk or tel. **07541 698235**



SIMPLY OUTSTANDING



ST NICHOLAS' SCHOOL

FLEET · HAMPSHIRE

THE SUNDAY TIMES

St Nicholas' School ranked 3rd position in the Sunday Times 2021 Parent Power
(The top independent schools with small or no sixth forms)

St Nicholas' School, Fleet

3rd
BEST VALUE
SCHOOL

62.9%
OF PUPILS

An independent day school for boys aged 3-7 and girls aged 3-16

- Excellent virtual learning for all pupils, throughout the school
- Brand new Interactive 4K UHD classroom screens
- Online concerts, private music lessons and assemblies
- Wide range of after-school activities, challenges and competitions during lockdown
- Outstanding Pastoral Care: newly appointed Director of Pastoral Care and Key Stage 3 and 4 Phase Leaders

T. 01252 850121 | E. registrar@st-nicholas.hants.sch.uk



@stnicholasschool



@stnicholasfleet



stnicholasfleet

www.st-nicholas.hants.sch.uk

Looking for a Letting Service from an Agent who cares? You'll find us on The Street



all
aspects
LETTING
SERVICES

20% Discount with this advert

T: 01256 470411

69A The Street, Old Basing RG24 7BY
info@allaspectsettingservices.co.uk

Zoopa



PROPERTY MANAGEMENT • RELOCATION CONSULTANTS • INVENTORY SERVICES

VILLAGE CAFÉ

One of my favourite quotes for the beginning of a New Year is “the new year stands before us like a chapter in a book, waiting to be written”. Happy New Year to all our customers and thank you for continuing to support the Village Café.

Despite the ongoing pandemic, we had a good few months last year and are now well on the way to raising funds for a second Automated External Defibrillator (AED) for the community. For us to be able to make such a difference is the reason we started the café and with your support, will continue to do so.

I would like to take this opportunity to thank the wonderful ladies of the **WI** who not only spent a lovely afternoon at the café enjoying afternoon tea, but generously gave a donation to help our cause (see *photo, right*). It's heartwarming that we can work together and it was fabulous to have them visit, we look forward to welcoming the WI again soon.

The **café reopens on Friday, 14th January**, following the Christmas break and we have slightly changed our opening hours for **January and February**. We will now be open from **2 to 4pm on Friday afternoon**, which is a reduction of half an hour only.

We will continue our 'cakeaway' service which means you can pre-order cakes via our Facebook page every week and we will box them ready for you to collect during our opening times. This has proved to be very popular so if something takes your fancy, send us a message and your cake will be ready and waiting. We have a prepayment option via PayPal or accept cash upon collection. We also provide take away tea and coffee (feel free to bring your own cup if you prefer or we can provide).



Finally, if there is anyone who would like to join our wonderful volunteer team as a barista, please contact us. We would be more than grateful for any help serving beverages and cakes and generally helping so if you have a free couple of hours on a Friday afternoon please come and join us. Contact via **messenger** on our **Facebook page** or by calling **07901 531152**.

Deborah Thorne

Dear Friends,

A New Year has begun, full of potential and possibility.

What might we achieve together?

I was encouraged to read about the proposed meeting in the autumn to see what our local villages could do in combating the effects of climate change. The problem was not only seen as one which people out there (the leaders of nations) were to solve (vital as their contribution might be), but what we could do, where we are together.

It's that kind of attitude and approach towards problems that confront us all that can help to lift our spirits and provide inspiration and direction.

The people we need are the 'can-do' people, the encouragers, the ones who get involved and stay involved. We need people who reflect on common challenges and think through them to solutions, in the way that inventors and engineers do. We need compassionate people who put themselves in the place of those in need and find ways of meeting those needs, like the people who organise and volunteer for Community Food Link. We need people of prayer and vision and hope, from local churches and schools and organisations, who can raise our eyes and strengthen our wills towards extended horizons of human endeavour.

It can be easy to become discouraged, to want to give up, to stop taking an interest in what can be done to help others.

It could be that the dawn of a New Year helps us to look at life afresh and through our rethinking and reassessing to become more resourceful and resilient, more dedicated and determined in taking action alongside others to improve the quality of life for us all.

Realising such possibilities really would make this a worthwhile year in our lives.

With love,

Reverend David Jenkins



ST MARY'S CHURCH

The church continues to be open **Monday to Saturday, from 10am to 4pm, and Sundays 11am to 4pm.**

We continue to ask that you wear face masks in the church, although this is not mandatory.



REGULAR SERVICES

Sunday	8am	BCP Communion
	9.30am	Sung Eucharist with Junior Church
Monday	9.15am	Morning Prayer
Wednesday	10am	Holy Communion
Thursday	9.15am	Morning Prayer
Friday	9.15am	Morning Prayer
	10am	Diddy Disciples (term time only)

If you have any **prayer requests** you can contact **Reverend Heather**, just text or call **07745 731729**.

EPIPHANY SERVICE

Wednesday 6th January, 7.30 pm

Join us as we celebrate another part of the Christmas story, and remember the arrival of the magi to visit the infant Jesus.

BAPTISM CELEBRATION SERVICE

Sunday 9th January, 9.30 am

All welcome to join in a celebration of our baptisms service. You are welcome to bring along your baptism candle to be re-lit.

CHILDREN'S ACTIVITIES AT ST MARY'S

We have recently launched a new group for **0 to 4 year olds, Diddy Disciples**, which is an opportunity to celebrate God's love through singing and storytelling followed by stay and play. The group meets **every Friday during term time** in the **Bolton Chapel** from **10 to 11.15am**. Just turn up – no need to prebook.

Junior Church has now resumed during our **9.30am service** in the **Parish Room**. New members welcome!

WEDDINGS AT ST MARY'S

Did you know that if you live in the parish of Old Basing and Lychpit, or have a strong link to the parish (what we call a 'qualifying connection') you may be able to marry at St Mary's. Please do get in touch if you'd like to explore the possibility of having your wedding at St Mary's.

HALL FOR HIRE

The **Parish Room** at St Mary's Church, including the kitchen, is available for hire.

There is availability for both regular bookings and one-off bookings.

All enquiries to Debbie, admin@stmarysoldbasing.org.uk or phone **07541 698235**.

CHURCHYARD CONSERVATION GROUP – PIOCC



Happy New Year! We hope you enjoyed **St Mary's Christmas Tree Festival** last month and took the opportunity to visit the Conservation Area.

Due to New Year, this month's working party has been moved to the second Saturday, **Saturday, 8th January**, at **10am** – meet by the PIOCC noticeboard at the entrance to the Conservation Area. There will be **no Thursday afternoon working party in January**. We will

continue our seasonal conservation work, including woodland management. Everyone is welcome. We look forward to seeing our regular volunteers and also new participants. Perhaps your New Year resolution could be to join us; we'd love to see you.

Churchyard Conservation is a community project, not just for churchgoers, so please come along if you would like to be involved. Just turn up in gardening clothes and bring gloves. The tools are provided. Our **Saturday morning** sessions last about **three hours** (with a coffee break and chance to relax). We are delighted that we are now able to provide refreshments inside.

The Conservation Area is a community space open for everyone to enjoy. Already the days are lengthening and signs of spring starting to appear. Despite the cold, the snowdrops are starting to show tiny white buds, the catkins lengthening and the birds starting their spring songs. The WI seat offers a calm spot for reflection and relaxation. You are very welcome to visit.

For further information please ring **Fay Farrant** on **01256 476863**

Margaret Carr – www.stmarysoldbasing.org.uk

THE MILL FIELD LOCAL NATURE RESERVE



Why not have a break from weekend chores for a couple of hours and instead try your hand at conservation at your local nature reserve on **Saturday, 22nd January, 10am, meet at the play area**. This month we will be clearing back scrub adjacent to the upper path which runs from the steps entrance opposite Little Basing to the corner gate (near the lane to the Bartons Mill pub).

This path has got quite overgrown and so needs opening out again. No experience is necessary just wear appropriate clothes and footwear and we will provide tea, coffee and tools. Any last-minute changes will be posted on Facebook and the field notice board, and if you can email that you are coming then I can provide updates.

WHAT TO LOOK OUT FOR THIS MONTH

If you are out walking the dogs at dusk you may see Linnets, Reed bunting and Yellow Hammer going to roost most nights. Redwing, Fieldfare will be shifting round with the chance of a Water Rail, Snipe or Jack Snipe or maybe a Bittern or Waxwing if the weather becomes harsher. Siskins and Lesser Redpoll can be seen along the wood edge and flocks of Long tailed Tit will be moving through the field mixed with the occasional Chiffchaff or Goldcrest.

Anne Francis, tel. **07974 944439**

Email: millfieldnature@gmail.com

Facebook: **Mill Field Conservation Group**

Berryford

Accountancy Services

Do you need an accountant?

We offer an accountancy service for small businesses and individuals

Year End Accounts
Bookkeeping
VAT and Tax
Personal Tax Returns

01256 472832 07790 948310
mike@berryford.co.uk
www.berryford.co.uk

A. SEWELL

www.asewell.co.uk



Lighting, Electrical & Audio Visual

All Lighting and Electrical work undertaken including:

- Security & Emergency Lighting
- Interior & Exterior Lighting Design & Installation
- TV, Telephone and Data Distribution
- Multi-room Audio/Visual
- Alarm Systems, CCTV & Door Access Systems
- Electrical Alterations & Re-wires



01256 329893
01252 844663



LEWIS

HEATING & PLUMBING

*We are a local reliable family business and strive to provide outstanding customer service & workmanship;
Endorsed by Which Trusted traders.*

- Boiler installation & servicing
- Central heating repairs / Smart thermostat installation
- Power flushing / New radiators & valves
- Gas hob & Gas cooker installations
- Landlord Gas safety certificates
- Showers/Sinks/Taps/Toilets
- Water softener installation
- Cold water storage tanks / Ball valves
- Unvented hot water storage installation & servicing
- Immersion heater & Vented hot water cylinder replacements



Telephone: 01256 413716

Mobile: 07804 030889

email: mark.lewis97@ntlworld.com

web: lewisheatingandplumbing.co.uk

OLD BASING VILLAGE HALL

*Whatever your function needs
your
Village Hall can meet them.*

Contact: Booking Secretary

Mobile: 07544 289932

Email: bookings@oldbasingvillagehall.co.uk



A-Foardable Domestics

WE REPAIR....

**Washing Machines, Cookers, Dishwashers, Fridge Freezers,
Ovens, Vacuum Cleaners & Tumble Dryers.**

Repairing
Since 1995

Low
Pricing

Family
Run

Qualified
Engineers

Basingstoke
Based

**Call: 07891 465499 | Email: afdomestics@engineer.com
Web: www.afdomestics.com**

MURDER AT BASING HOUSE, AGAIN

Once again, **Rowena Hackett (Director)** and **Rosemary Kershaw (Producer)**, have presented some very talented actors in an entertaining evening in aid of **The Friends of St Mary's Church**.

On a dark and stormy night in the 1920s seven characters from the world of silent film gather to plan a film with sound. There are hidden tensions and relationships within that group: the ageing star Bette de Haviland (**Kate Medhurst**), Albert Pitchfork, producer, (**Ian May-Miller**) and his wife, Mary, (**Kate O'Neill**). Robert Devine, fading heart throb of silent movies (**Tim Shaw**) is drinking heavily concerned about his future career, his eye on the ingénue Jane Fontaine (**Susan Webb**) as his next lady, a role that Bette thinks is hers by right. Jane arrives with Daniel Scott (**Tom Stevens**) expert in sound. Wilkins, Bette's maid, (**Kerryann Chamberlain**), makes an appearance, weighted down with suitcases for her mistress and a grievance about unpaid wages.

Feelings flare up: Bette and Joan realise that they are competing for the star role. Bette reveals she is desperate for money, as she is being blackmailed. Jane declares that she deserves the part, Albert is desperate lest rumour of the blackmail should taint this new venture. Bette sweeps out. The lights go off. When they go on, Daniel reports seeing Wilkins leaving the house carrying a case stuffed with Bette's clothes. Robert returns, ashen faced to report that Bette is dead, covered in blood at the bottom of the cellar steps.

At this point the interval fell and the audience discuss over supper who the murder was?

An evening like this can only happen with fabulous helpers: space prevents naming them all, but we should thank Howard Simpson for Lighting, Spin Audio for Radio Mics and Russ Taylor, Hall Caretaker.

Jane Whiter



We supply & install:

- Loft ladders & loft hatches
- Boarding, lighting & insulation



CREATING SPACE THE EASY WAY!

HUGE BENEFITS

- De-clutter your home
- Create up to a third more space
- Gain safe & easy loft access
- No mess, no fuss, no sub contractors
- DBS checked & fully insured
- Which? Trusted Trader



Call Pete now to book a FREE survey & quote

01256 688648

WWW.ACCESS4LOFTS.CO.UK

The Complete Tree Service



- Residential & commercial work
- Tree removal, thinning & lifting
- Scrub clearance & hedge trimming
- Stumps removed

Fully trained & certified staff
£10m Public Liability Insurance

Health & Safety focused
30 years experience

We guarantee we can help. Call for professional, friendly advice...

Teams all over Hampshire, Surrey, Sussex & the South:

01256 763 162

Visit our website for images, video footage,
client lists and more:

www.cedardale.co.uk

Checkatrade.com
Where reputation matters



BASING HOUSE RUINS AND GROUNDS

Plus museum, garden, activity trail, workshops,
outdoor theatre, special events and more!



THINGS TO DO

- Discover the Great Barn and spot the artillery damage still visible on its walls
- Explore the ruins and imagine what the house would have looked like
- Visit the walled garden and learn about Basing House's fascinating history in the museum
- Walk your dog or find a picnic spot

INFORMATION

Pay once, visit all year! With your ticket, you can enjoy unlimited visits to Basing House and return as many times as you like for a whole year! See our website for full details, admission prices and opening times.

BASING HOUSE | Barton's Lane | Basingstoke | Hampshire RG24 8AE

Please call 01256 639550 or email basing.house@hampshireculturaltrust.org.uk



www.hampshireculture.org.uk/basing-house

Hampshire Cultural Trust is a registered charity (no. 1158683) and company (no. 08986225) in England and Wales.

NATIONAL WOMEN'S REGISTER (NWR)

The National Women's Register (NWR) exists to provide mentally stimulating meetings, activities and events across the country. **Chineham and Old Basing NWR** meet at **2pm** on the **first Monday of each month**. We also have a monthly lunch out and an evening Book Group. We are very democratic with everyone having a say in our programme, and we take turns to leading or host a meeting. If you are unable to participate in a local group (there are nearby NWR Groups that meet in the evening) you can join as an independent member to join in the many online activities offered nationally. Some of our members used to take an annual three-day break across the Channel but resumption of that trip is on hold.

December is always a lively meeting as we have a team of four members who arrange our Christmas lunch in the cosy Old Basing Cricket Pavilion. With such an enthusiastic and hardworking team we had a magnificent spread for a small cost. Sparkling wine helps the brain cells for participating in the quizzes. Last year we had to do the event via Zoom, but it wasn't quite the same. In January we will be back to a discussion meeting when we will talk about anything that starts with the letter 'F', and in February we will plan our year ahead.

With the gloom of the winter ahead why not brighten up your social life. If you enjoy lively conversation and broadened horizons whilst having fun and meeting people (according to the current guidance on social contact) then NWR might be your sort of group. For more information please look at www.nwr.org.uk or contact our current local organiser **Karen** via karen.dann@gmail.com or call **01256 328488** for a chat.

Sandie Tapping

LINGUASTASTIC LANGUAGE SCHOOL



Happy 2022! At the time of writing, there is once again a Covid cloud hanging over us, but let's hope it quickly disappears and that the different New Year traditions around the world have

brought us some better luck! A superstition which exists in Romania, where, on the last day of the year and on New Year's Day, it is advised not to throw anything out of the house – one shouldn't even take out the bins, so as not to also throw out good luck. In the Philippines, some people open their doors just before midnight, to rid their homes of the previous year and welcome in the new one. In Ecuador, it's common for people to burn photos before midnight. That way, they can rid themselves of memories they don't want to bring into the new year.

In some countries, it is considered bad luck to eat lobster on New Year's Eve. Why? Well, lobsters sometimes move backwards and so eating them symbolises a year of setbacks. Instead, you might go for fish as in some countries, it is believed that it will ensure a smooth new year, like a fish swimming through water!

Of course, maybe you are more one for pro-actively steering your own destiny or that of your child. Learning a language can positively contribute in several significant ways since languages offer the ability to connect with others, foster understanding of different cultures, boost one's confidence and improve one's cognitive skills – to name but a few advantages.

LinguaTastic looks forward to continuing to open up the worlds of the children of Old Basing Infant, St Mary's Junior and Great Binfields schools in 2022. For further information on these clubs or other classes for adults and children, email info@linguatastic.com

Crusade

CLEANING SERVICES



Local Old Basing based business

- **Window Cleaning**
 - **Gutter Clearance and Cleaning**
 - **Pressure Cleaning**
- Contact us for a free quote**

01256 766899

www.crusadecleaning.co.uk

S. M. DECORATORS

***Interior & Exterior
Prompt & Efficient Service
Competitive Prices
Fully Insured Company
Over 25 Years Experience
Skim Plastering and
Paperhanging Specialists
City & Guilds Qualified
All Work Guaranteed
For Your
Free Estimate Or Advice
Please call Steve on
01256 811929***

Weller Mackrill

**Chartered Certified Accountants
and Tax Advisers**

Accounts - Tax & VAT Returns - PAYE & CIS - IR35 advice
Company formations - Tax planning - Free initial consultation

Weller Mackrill, South Building, Upper Farm, Wootton St Lawrence,
Basingstoke. RG23 8PE

For a friendly and sensibly priced service
Please ring **01256 782059**

E-mail:

paul@wellermackrill.co.uk
james@wellermackrill.co.uk



Over 35 years experience in all
types of domestic, commercial and
industrial fencing

FREE estimates and advice with
no obligation and good quality
workmanship are **GUARANTEED**

CALL US 01256 358 940
www.fencing-in-basingstoke.co.uk

TREE-MENDOUS NEWS!



The **Basingstoke Lions Club** has responded to the call to action regarding the Woodland Trust's partnership with the **Queen's Green Canopy (QGC)** project in celebration of HM the Queen's Platinum Jubilee.

Recognising that to do so would be very relevant to the Lions' work for the community, the Club applied for a package of 30 saplings for which, after much investigation, suitable sites were found.

This will result in the saplings (Rowans, Wild Cherry, and Silver Birch) being scattered about Basingstoke at locations that, amongst others, will include two hospitals, several schools, colleges and various parks. Where wished a commemorative plaque will record the event and/or recipients may choose to detail the planting on QGC's 'Virtual Map': queensgreencanopy.org/map-education-hub/qgc-map/#/ (a digital record of the Jubilee tree planting projects across the United Kingdom).

Either way, we can take pride in having done our bit for the community that "we serve" (our motto)!

The photo is of 'Lennie the Lion', mascot of The Basingstoke Lions Club, lending a hand at the planting of a silver birch by Jubiloaks, an Oakley voluntary group whose aims include the planting of trees and the protection of the woodland and wildlife for the future.

THE PROJECT

The Queen's Green Canopy (QGC) is a unique tree-planting initiative created to mark Her Majesty's Platinum Jubilee in 2022 which invites people from across the United Kingdom to 'Plant a Tree for the Jubilee': for more information go to www.queensgreencanopy.org or www.facebook.com/QueensGreenCanopy

THE LIONS

The Lions Club of Basingstoke, established 54 years ago, is part of the 104-year-old Lions Club International. One of our five particular service areas is 'Environment' and we thus aim to involve ourselves with local, national, and also international, projects to help create a sustainable and healthy future for generations to come.

For more information please go to www.basingstokelions.org.uk

Ordinary people – amazing things!



W.T.HILL

Painter & Decorator

Internal & External

Over 30 Years Experience

Tel: 07748808069/01256 467901

Free Quotations

Proud members of

Checkatrade.com

Where reputation matters



Quality Dentistry & Denture Expertise
Emergency Same Day Denture Repair
Award Winning Best Patient Care

Our highly experienced Dental Team headed by Director Fabio Bevilacqua wish to reassure our patients we are working within the current COVID-19 Government Guidelines to ensure our patients comfort and safety.

01256 355 268 info@italdent.co.uk www.italdent.co.uk

Unit Q, Loddon Business Centre, Roentgen Road, Basingstoke RG24 8NG

Implants
Dentures
Crowns
Bridges
Veneers
Hygiene
Whitening
Aromatherapy
Hypnotherapy



Lee Quinlan



Kitchen

&



Bathroom Fitter

You buy it and I'll fit it!

"One stop" service for accompanying:

Plumbing, Tiling, Plastering,
Flooring & Woodworking

Electrical Work



01256 811830

email: enquiry@leequinlan.co.uk

web: www.leequinlan.co.uk



WESTPORT GREY

BUILDING CONTRACTORS

01256 636511

Extensions | Loft Conversions | Renovations | New Builds



WWW.WESTPORTGREY.CO.UK

Westport Grey Ltd. - Registered in England - No. 6216684

BUILDING YOUR DREAMS

HER MAJESTY'S ROYAL MARINES AT THE ANVIL

The majestic full concert Band of **Her Majesty's Royal Marines**, the **Corps of Drums** and everyone's favourites, our very special guests, **The Chelsea Pensioners**, at **The Anvil**, on **Sunday 30th January**, at **3pm**, will again make this a very fantastic event. So much more than just a military band! Tickets on sale from Anvil Box Office.

DECEMBER 2021

Helping St Michael's Hospice Light up a Life. Our Rotary Club provided a team of car parking marshals so people could attend this special event that is so important for so many families at this time of year.

HAVE YOU MADE A NEW YEAR RESOLUTION?

Volunteering is good for your mental health. It's with the best of intentions that we make our resolutions, but how many are still being followed come February? Giving your time and volunteering is something that costs very little and can bring unexpected rewards to the giver. All charities need volunteers and you don't have to make a huge commitment. Help for just one event or possibly for just a few hours. Lots of charities need people who donate cakes or help with teas or may be setting up gazebos or a bit of DIY. It's not all bucket collecting! Giving your time may also be chatting to an elderly person; you may be the only person they speak to all day. Asking if a homeless person would like a hot drink; a better way of helping them than chucking a few coins. If you want to meet new people volunteering is a great way of doing it; rewarding and great fun. Find out about volunteering today, it can add a new dimension to your life. Try it and see! Basingstoke Deane Rotary is a charity and welcomes volunteers as do all charities. Check out our social media & websites below to find out more about how you can get involved locally.

PROBUS CLUB

PROBUS CLUB VISITS BROOKLANDS TRANSPORT MUSEUM



It was a cold but clear day which proved useful as there was plenty of outside walking between all the different buildings that house so many high-quality exhibits of all forms of transport. Who would have known that the famous Brooklands race track, with its banked curves, that had the inaugural British Grand Prix in 1926, also had cycle races for many years?

Motorcycles and cars dominated for most of decades and many examples were on display in pristine condition. These included one that was a member of the London to Brighton Veteran Car Club, through Austin Sevens, MGs and Bentley 4 litres. There was a Napier Railton that had an engine capacity of 24 litres. In the small building housing the McLaren car exhibits there was even a life size model made from 280,000 Lego bricks.

Many aircraft had been built at Brooklands with impressive displays in hanger-like buildings. These ranged from the earliest flights up to Tornado jets. During WW2 it was one of the main sites for manufacturing Hawker Hurricanes as well as Vickers Wellington bombers. The Luftwaffe made a direct hit killing 90 people and a memorial can be seen at the edge of the track. At its height over 14,000 people worked at Brooklands designing and manufacturing both military and civilian planes until 1986. On site was a Concorde that, for a small additional charge, could be looked around including the cockpit.

For more information on Probud see

To advertise here contact
advertising@basinga.org.uk

Home Maintenance Services

Family Business • Fully Insured • Free Quotations

References by Request • 25 Years' Experience

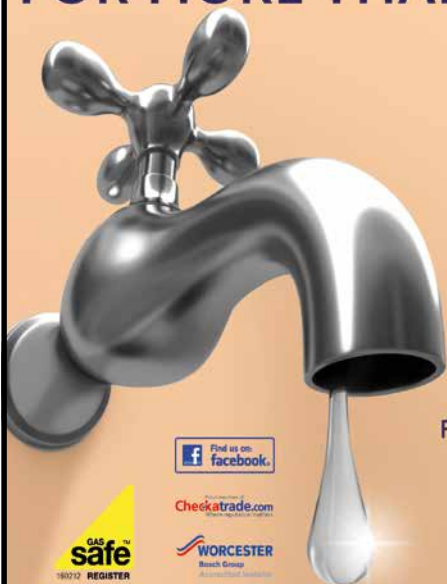
Fencing • Drylining/Studwalls • Painting/Decorating • Laminate Flooring • 2nd Fix Carpentry
Plumbing • Tiling • Fitting/Designing of Kitchens and Bathrooms

Marcus Underdown Property Maintenance Expert

01256 479327 • 07878 078135 • mtunderdown@virginmedia.com

"We do anything from changing a tap to refurbishing your bathroom"

FOR MORE THAN JUST A LEAKY TAP



Niall Catlin
PLUMBING & HEATING

EST 1991

Leaky taps to full bathroom installation
Power flushing | Water softeners | Hot water cylinders

Boiler breakdowns, repair and servicing
Boiler replacement | All allied trades
All aspects of plumbing and heating



Checkatrade.com
Approved member

WORCESTER
Boach Group
Approved installer



www.niallcatlin.co.uk

01256 818086 | 07774 741021



Serving Basingstoke for over 38 Years



Many Items in stock for Fast Free Delivery

Showroom

The old Station Andover Rd
Oakley Basingstoke RG23 7HA
Tel: (01256) 782070
OPEN 9am - 5pm MONDAY - FRIDAY CLOSED WEDNESDAY
SATURDAY 10am - 4pm

CARPET EDGING SERVICE

ALSO AVAILABLE

Rugs Made Your size

VINYL, WOOD, CARPETS, LAMINATE,
FURNITURE FOR THE DINING ROOM, LOUNGE, BEDROOM
AND STUDY

www.oakley-furnishing.co.uk



British made Beds Free Delivery Approx 1 week

10
YEAR
GUARANTEE



NJP Heating Services

0% finance

on all Worcester Bosch boilers

complete with up to 10 year guarantees on all
Worcester Bosch boilers and controls

Contact us today for your free quote

07717 741999 or
01256 782202

nick@njpheating.com | njpheating.com



OLD BASING ROYAL BRITISH LEGION – WOMEN'S SECTION

LIVE ON



The **Old Basing Royal British Legion – Women's Section** is holding a **General Meeting** at the **Royal British Legion Hall** on **Thursday, 24th February**, at **7.30pm**. Tammy Lake will be giving a talk on a small industrial mining town where she grew up. Competition 'A Christmas Photo'.

Sue Wilson

BASINGSTOKE & DISTRICT RAILWAY SOCIETY

Basingstoke & District



Railway Society

The **Basingstoke & District Railway Society** has a programme of twice-monthly meetings planned for 2022, but with the uncertainty surrounding the coronavirus pandemic at the time of writing, check our website or call the Secretary to confirm that meetings are to go ahead.

We hope to begin on **Wednesday, 12th January**, when Leslie McAllister will present **'The South of Ireland to the End of Steam'**. Leslie will show a selection of colour images taken by skilled photographer Lance King recording the last years of steam and early diesel power in the Dublin area and on many Irish branch lines.

Our second meeting of the month, on **Wednesday, 26th January**, will be our **AGM**, followed by a presentation of **Members' Favourite Photos** assembled by David Brace.

Our meetings begin at **7.45pm** and are held at **The Wote Street Club** in New Road in Basingstoke town centre. We welcome new members to the Society and are always pleased to see non-members at our meetings at a cost of just **£5**. Membership details are on our website **www.bdrs70d.com** or call the Secretary on **01256 331002**.

BASINGSTOKE CIVIL SERVICE RETIREMENT FELLOWSHIP



Our meeting on **1st December** saw 61 members and three visitors enjoy our Christmas meeting with a buffet, guest speaker and bumper raffle. We started with the usual tea, coffee and biscuits and everyone was welcomed by the Chairman, David Cowling. The Secretary, Tony Brazier, then gave details of the Christmas lunch at BCOT on Thursday, 9th December, and said that names were being taken for the guided tour of Dorney Court on Wednesday, 23rd March, and a day at Newbury Races on Friday, 1st April, next year. The group's full programme of speakers and trips for next year can be obtained by contacting the secretary at **csrfbasingstoke@gmail.com**

We were then very pleased to welcome Fiona Birchall who kept us highly enthralled and spellbound with some Christmas tales from around the world and leaving us with a riddle to keep our minds occupied for some time. This was then followed by our buffet lunch accompanied by Christmas music and crackers kindly donated by Tesco. There were so many raffle prizes, donated by members and supplemented by donations from both Tesco and Storck, that everybody ended up with a prize.

The next meeting is on **Wednesday, 5th January**, when Barbara Cummins will be recounting tales about her 'Cycling in Different Counties' and on **Wednesday, 2nd February**, Mike Brooks will be telling us about Amateur Dramatics. The group meets on the **first Wednesday of each month** at **Brookvale Village Hall** from **10am to noon** and all retired Civil Servants, their relatives and friends are welcome.

David Cowling

JANUARY IN YOUR GARDEN

You never can be sure what the weather is going to be like, whether we will get a repeat of the 'Beasts From The East' from recent past winters or not, but if we do, be prepared to be on constant snow patrol, especially if you have large coniferous trees or a greenhouse, snow must be brushed or knocked off as soon as possible to avoid damage due to the excessive weight.

But let's think positively. The cold weather will not come as harshly as some winters, and we will be able to get out into the garden. There is much planting to be done, Raspberries, Gooseberries and currants can be planted, as well as Roses, so long as the soil isn't frozen or too waterlogged.

If you are thinking of growing peas this year, and would like them earlier than usual, place a cloche over the soil to allow it to warm up (tip: if you had a real Christmas tree, the stripped down branches can make an excellent pea support). And while we are on the Christmas theme you can press mistletoe berries into the bark of apple trees to establish your own mistletoe plants for next Christmas.

Remember to keep off wet soil to avoid compacting it. If you have to walk on it in the wet, stand on a plank, spreading your weight. While you are you can do some weeding ready for the spring, simply hoe off or pull out any annual weeds and dig out perennial ones.

The most pleasing course of action is of course to stay inside where it is warm! If you need an excuse to do so, turn your mind to browsing the seed catalogues and online shops, maybe trying something new this year? Also sort out your old seeds, throwing away empty or out-of-date packets.

For January seed sowing try some early sowings in trays. All you need is a bright, cool windowsill as germination temperatures of around 55° (13°C) are adequate. Try Lettuce, Summer Cabbage and Cauliflowers, plus round varieties of Carrots, Spinach, Salad Onions and Turnips. If you are lucky enough to have an electric propagator then plant Tomatoes, Aubergines, Chillies and other crops that need a long hot growing season, providing you have an indoor area that receives a lot of light to pot onto. Keeping them starved of light as they grow will result in leggy, useless plants. If you have a heated greenhouse you can sow greenhouse tomatoes as early as this month.

As well as the usual varieties, why not have a look for some more exotic or newer species. Pluots are a mixture between a Plum and an Apricot, and do well in the south of England. Self-fertile varieties are available too. If you're feeling adventurous try a Medlar tree. Medlars are ornamental, flowering trees with pretty blossom, good autumn colour and fruits, which are edible, although not to everyone's taste. Their fruit is tart if eaten raw, but makes pleasantly flavoured jellies or can be used in desserts. Left to soften the fruit mellows and is a traditional, if unusual, treat.

Cover rhubarb plants with a bucket or terracotta pot to force an early crop. Rhubarb 'Timperley Early' is regarded as the earliest maturing variety, if forcing you can expect tender pink sticks as early as February, though it can be grown in the normal way.

For houseplants, reduce watering now as plants aren't growing much, and leaves don't lose moisture in cool conditions. All you need to do is keep plants just moist, and there is no need to feed plants until March. You can just mist the underside of leaves to keep humidity high if you want.

NATURE NOTES FOR JANUARY

A very happy New Year to all readers and customers and I really hope the start of 2022 finds you well and feeling optimistic about the next twelve months. We have to believe!

Although unable to attend, I was very encouraged to hear that the Parish has set up its own initiative regarding climate change and that many people, with an expertise in some form about the ten or so main concerns that this planet has are going to help lead the essential progress toward a cleaner Parish (and ultimately a safer world). Please don't think I'm climbing on a personal soapbox to say this but it is of course absolutely relevant to the well-being of our surrounding countryside and the wildlife within it. One cannot exist without the other and we would very much poorer for its demise, so it is down to every one of us to do 'our bit' to clean the place up.

I must start the New Year with apologies to two contributors for misspelling their names in recent months. Firstly, Terry McAnish who often sends me pics or sightings from his Cavalier Close garden and whose name I have written many times before! And to Anthony Hutton, who sent the super photo of a Little Owl (that appeared on the front cover in November) who I called Alan on the credit. More haste less speed is I believe the term gents so Ill try harder next time!

Well, Anthony must have forgiven me because he sent me another cracking shot before Christmas, of a **Wood Duck** (*see right*) paddling around with the Mallards on the Basingstoke Canal at Odiham. This beautifully marked duck, not dissimilar to a Mandarin, is not native to the UK but originally a vagrant from the USA and has now established itself as a feral species across the country. You may have seen this bird on nature programmes as it nests in tall trees meaning that its young have to 'parachute' down to the ground, but hopefully not into the jaws of some waiting predator!



As predicted last month, Redwings have begun to arrive here and Stephen Thair in Park Lane noted a few flitting around the Common this week. Given the very chilly snap we've just had I'm a little surprised that the birds haven't been all over the berry bushes, as have the Wood Pigeons and Blackbirds. Mind you, Blackbirds are partial to a crab apple or windfall and these offerings can often lure Redwings, Fieldfares and Mistle Thrushes. But Stephen's well armoured selection of bird feeders have been attracting Great, Blue and Coal tits, plus the obligatory Robin. I use the word 'armoured' as a Grey Squirrel has been trying his luck but to no avail. As many readers and feeders of birds will testify, a flimsy bird food dispenser does not have much of a future when a perishing Squirrel is about. Now if only this was the Isle of Wight or Scotland and the chance to see a Red!

Don't forget to send all your nature-related photos to rickbourne@yahoo.com or naturenotes@basinga.org.uk or ring **01256 321108** for news.

For all your bird food requirements, order it from me at 'Bird Drop-ins', use the former email address or ring/text me on **07900 648675** to place an order or get a form.

Rick Bourne

DIARY DATES FOR JANUARY

For details of services and events at St Mary's Church please see page 23

JANUARY

Tue 4	7.30pm		Parish Council Meeting (The Pavilion, Recreation Ground)
	7.30pm		Old Basing WI Meeting (Parish Room, St Mary's Church)
Fri 7	10.30am – noon		Ladies First Friday Coffee Morning (see page 17)
Sat 8	10.00am		PIOCC Working Party (meet at PIOCC noticeboard)
Mon 10			DEADLINE JANUARY COPY TO EDITOR (see page 3)
Wed 12	7.45pm		Basingstoke & District Railway Society talk (see page 35)
Fri 14	2.00pm	4.00pm	Village Café (Parish Room, St Mary's Church)
Thu 20	12.25pm		Ploughman's Lunch (Parish Room, St Mary's Church)
Fri 21	2.00pm	4.00pm	Village Café (Parish Room, St Mary's Church)
Sat 22	10.00am		Mill Field Working party (meet at play area)
Wed 26	7.45pm		Basingstoke & District Railway Society talk (see page 35)
Fri 28	2.00pm	4.00pm	Village Café (Parish Room, St Mary's Church)
Sat 30	3.00pm		Band of Her Majesty's Royal Marines (The Anvil)

FEBRUARY

Tue 1	7.30pm		Parish Council Meeting (The Pavilion, Recreation Ground)
Fri 4	10.30am – noon		Ladies First Friday Coffee Morning (see page 17)
Thu 24	7.30pm		Old Basing RBL – Women's Section General Meeting (Royal British Legion Hall)

BASINGA EXTRA

This month we were unable to include every article that we received, or submitted long after the deadline. Content listed below is available on our website: www.basinga.org.uk

Hampshire & Isle of Wight Wildlife Trust

Governor Vacancy

Force Crime Prevention



**Now open in Belle Vue Rd
Old Basing.**
**Hairdressing for the whole
family.**
01256 357333

GARDEN SOLUTIONS NEIL INKLEY

SPECIALIST IN FENCING, TURFING,
PATIOS ALSO GENERAL GARDEN WORK
including Lawns, Hedges, Clearance,
and Pressure Cleaning

Local References Free Estimates
01256 882108 or 07768 105488

Basing Pedicare

Fully qualified mobile Foot Health Practitioner

- Toe Nail Cutting
- Corn And Callus Management
- Diabetic Foot Management
- Verruca Care



Contact

Malinda Snook MCFHP MAFHP
to make your appointment-
I visit you in your home!

07751 474322

M.C.PEGG

Plumbing, Heating & Gas Services

Local & Reliable

All Plumbing and Heating Installations
Gas Safe Registered - 195010

Bathroom Suites/Shower
Gas Safety Certificates
Boilers, Hot Water Tanks,
Heating systems,
Servicing

FREE ESTIMATES



Tel: 01256 308462

Mob: 07973 217020

Email: matthew.pegg1@btinternet.com

Spencer & Peyton Ltd

Established 1961

3rd Generation
family owned
and run Funeral
Directors and
Monumental
Masons

24 Hours



Our family serving your
family for 60 years

380 Worting Road
Basingstoke, RG22 5DZ
01256 323165

7 London Road
Hook, RG27 9DY
01256 761717

Trading Standards approved

Pre-paid funeral plans
discussed without obligation.

funerals@spencerandpeyton.co.uk
www.spencerandpeyton.co.uk

ON SITE FLORIST



01256 355556

www.theflowergirlflorist.co.uk



Did you hear
ST. MICHAEL'S HOSPICE
has an **ebay** store?

Whether
**antiques &
collectibles** are
your passion

or maybe it's
fashion,

you love playing
games.



or sprucing
up your
home,



you can shop for what you need
and support your local Hospice. Go to
our website and follow the link for **ebay**.
www.stmichaelshospice.org.uk



High quality and friendly MSK,
Back Pain and Neck Pain service
with professionals who listen

Annette and Gordon Linscott

35 Years in Basingstoke
Now on your doorstep

East Barn, Lychpit Centre
01256 466 666

www.spineteam.co.uk



THERMOFLUX
PLUMBING AND HEATING SERVICES

Fully insured | Over 16 years experience |
Free no obligation quotations

Boiler and heating system installation specialist

General plumbing

Bathroom installations

Water softener installations

Power flushing

Un-vented hot water systems



T: 07891 226591 E: Thermofluxplumbing@outlook.com

 **TWO GUYS**
KITCHENS / BATHROOMS / APPLIANCES



SERVING THE PEOPLE OF BASINGSTOKE & NORTH HAMPSHIRE SINCE 1968

**FINANCE
NOW
AVAILABLE**

Please ask
for details

**DESIGN,
SALES & FULL
INSTALLATION
SERVICE**

01256 363123 | twoguys.co.uk

ARMSTRONG ROAD, DANESHILL EAST, BASINGSTOKE, HAMPSHIRE RG24 8NU

● **BASINGA**

EDITOR: Colin Follett, 101 The Street, Old Basing, RG24 7DA	01256 326909
LAYOUT ADVISOR AND ASSISTANT EDITOR: Lyn Caswell	01256 464800
ADVERTISING: Alan Rowden, 21 Basingfield Court, Old Basing, RG24 7BG	01256 473590
SECRETARY: Graham Merry, 40 Linden Avenue, Old Basing, RG24 7HS	01256 463908
TREASURER: Andy Groves, 30 Pyotts Copse, Old Basing, RG24 8WE	07918 644187
DISTRIBUTION:	

Old Basing Area: Peter Watson, 19 Priory Gardens, Old Basing, RG24 7DS	01256 352299
Lychpit Area: Andree McLean, 6 Pimpernel Way, Lychpit, RG24 8SS	01256 819006
WEBMASTER: Alan Morris, 29 Lingfield Close, Old Basing, RG24 7ED	01256 329417



OLD BASING & LYCHPIT PARISH COUNCIL

CLERK: Sandra Tuck	01256 462847
OFFICE AND HOURS: The Pavilion, The Recreation Ground Monday to Thursday 10am to noon	



CHURCH INFORMATION FOR THE AREA

Church of England (Parish of Old Basing & Lychpit)

VICAR: Rev'd Heather Leppard, The Vicarage, Church Lane, Old Basing Email: vicar@stmarysoldbasing.org.uk	01256 363612 07745 731729
ADMINISTRATOR: Debbie Filer	07541 698235

Regular Services at St Mary's Church, Old Basing

SUNDAY: 8am Holy Communion; 9.30am Sung Eucharist and Junior Church

OTHER DAYS: Wednesday, 10am – Holy Communion; Monday, Thursday and Friday, 9.15am – Morning Prayer

Changes to the regular service pattern and other weekday services are shown in the weekly news-sheet, a copy of which is displayed on the noticeboard in the church porch

Old Basing Methodist Church

MINISTER: Rev'd David Jenkins	0118 3271592 07973 195566
SUNDAY SERVICE: Morning Service 10.30am	

Roman Catholic

PRIEST: Fr Dominic Adeiza St Bede's Church, Popley Way, Basingstoke	01256 465214
SUNDAY MASSES: 9am, 11am and 6pm	

need a **painter** and **decorator**?

- professional
 - friendly
 - affordable
- 
- experienced
 - reliable
 - fully insured

call us today for a free no obligation quote

01256 334852 07919 358050

pscdecoratingservices@gmail.com

Infinite Harmony Hatha Yoga

4 classes to choose from:

Gentle Chair Yoga

If you have mobility/injury concerns then this is the class for you. All yoga is done on a chair and using props.

Monday's

14.00 - 15.00

Lychpit
Community Hall

Relax Yoga

This class is for all levels of ability and uses postures to help you relax and deepen your yoga practice.

Tuesday's

19.15 - 20.15

St Mary's
Church Hall,
Old Basing

Sunday Morning Yoga

This class is for all levels of ability and focuses on strength and flexibility.

Sunday's

09.15 - 10.15

Lychpit
Community Hall

Sunday Night Satsang

This is deep relaxation yoga. You will be led through a series of gentle yoga postures followed by an extended guided meditation.

1st Sunday

of the month

18.30 - 19.30

Lychpit
Community Hall



Contact Vicky on 01256 910108 or
email vicky@infiniteharmony.co.uk
Don't forget to book your space.



For more information visit www.infiniteharmony.co.uk

Tree Surgeon

01256 763859

07766 256788

TreeSceneArb@gmail.com



TREE SCENE

ARBORICULTURE

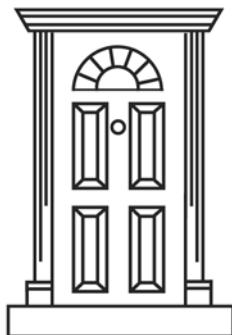
Adrian Stanley

BSc(Hon) AA Tech Cert

Qualified & experienced
arborist

- All aspects of tree work & stump grinding
- Fully insured (£5m) - free estimates
- Logs supplied

**To advertise here contact
advertising@basinga.org.uk**



DAVID MATTHEWS

Carpentry & Joinery Services

Chineham, Basingstoke. Tel: 01256 476207

- ❖ Doors ❖ Wardrobes ❖ Kitchen Design Service
- ❖ Custom Made Units

Proud to be supporting businesses and organisations in Basingstoke and surrounding areas



Your local one-stop provider of professional marketing & design support and graphic communication materials.



ISO12647



Trusted
Business

100%
of customers surveyed would
recommend Greenhouse

greenhouse 
Marketing | Design | Production

Call 01256 880770 www.greenhousegraphics.co.uk