

July 2020

# BASINGA



David Whiter



Old Basing and Lychpit Parish Magazine  
[www.basinga.org.uk](http://www.basinga.org.uk)

Proud to be supporting businesses and organisations in the Basingstoke and surrounding areas for 27 years



Your local one-stop provider of professional marketing & design support and graphic communication materials.



ISO12647



Call 01256 880770 [www.greenhousegraphics.co.uk](http://www.greenhousegraphics.co.uk)

**greenhouse**  
Marketing | Design | Production



**Shops**

**Funds raised in our shops support the hospital and its activities.**

**Old Basing - 42 Belle Vue Road**

**Hartley Wintney - Millbank House, High Street**

**Odiham - 71 High Street**

## Odiham & Old Basing Health Centres

Proud to Serve our Community – New Patients  
Welcome, Register Today!



**Doctors Assadourian, Andrews, Pizzotti, Williams, Pickup, Edmonds, Harris & Hutchings**

Our teams of healthcare professionals offer a full range of NHS & private services as well as holistic therapies for you & your family in 2 purpose-built surgeries, located in Odiham & Old Basing. Our catchment area stretches from Lychpit to Hartley Wintney & Hemard. If you have just moved to the area or are considering changing your GP surgery, take a look at our website to see what we can do for you.



Visit us @ [www.odiamhealthcentre.co.uk](http://www.odiamhealthcentre.co.uk)



Call us on 01256 702371 (Odiham) or 01256 868370 (Old Basing)



**Martin Cole**  
Plumbing Limited



- Heating Systems • Boiler Replacements •
- Cylinder Replacements • Un-vented Systems •
- Radiators • Pumps, Motorized Valves • Showers •
- Thermostatic Radiator Valves • Water Softeners •
- Bathroom, Ensuite • Cloakroom (complete installations) •
- Household Plumbing Repairs • Taps •
- Ballvalves • Washers • etc. •



**Tel: 01256 352419**  
Local Plumber

[mccole@btinternet.com](mailto:mccole@btinternet.com)

## JULY NOTES AND NEWS

The cover photograph this month is a depiction of extreme enforced social distancing! The photo was supplied by **David Whiter**.

Because of COVID-19 we continue to publish this magazine on-line on our website at: **[www.basinga.org.uk](http://www.basinga.org.uk)**

For information about **local shop opening times** and sources of comfort from our many **pubs** and **take-aways** in the village see *page 10* and for **Chineham Centre Shops** see *page 13*.

Sadly the **Old Basing Carnival** had to be cancelled this year but for details for next year see *page 4*.

The **Old Basing & Lychpit Village Show** has also been cancelled but for details of an online “virtual” photographic competition and the date for next year's show see *page 21*.

Again, unsurprisingly, there is not much going on in July, there are still no diary dates but Page 38 contains a delicious carrot cake recipe from an Old Basing resident.

**Finally, after a three-month break due to the global pandemic it is anticipated that the August edition of the Basinga will return to its normal printed magazine format and again be dropping through your letterboxes.**

## CONTRIBUTIONS TO THE BASINGA

We welcome both regular and occasional items for the Basinga. The very last date for copy to the Editor for the **August edition** is **6 pm on Friday, 10th July**. Please use the forms on the Basinga website: **[www.basinga.org.uk](http://www.basinga.org.uk)** to get your dates, articles and letters to us (see *box on page 15* for further instructions).

All **advertising** enquiries – classified, free adverts or inserts (flyers) can also be made via the Basinga website. Don't forget that we only accept articles with about a **300 word maximum**.

## PHOTOS FOR THE BASINGA

If any reader would like to offer a **photograph of the village environment** we would be happy to receive them, either for immediate use or to build up a portfolio of ‘village views’ that we can use when appropriate.

We now have a web form that you can use to send a photograph for the website archive and possible use in the magazine, you simply go to **[www.basinga.org.uk](http://www.basinga.org.uk)** and the form can be found on the '**Contributors Submission**' drop-down menu.

Should you wish to submit multiple or a series of photos they can be emailed but please read the instructions on the photo form for details. This feature should **NOT** be used for Free Ads or Article photos, which can be attached to their own forms.

## LOGOS FOR THE BASINGA

We are making changes to the presentation of the Basinga and welcome **club** and **society logos**, with the option to use them within articles. Please send to **[editor@basinga.org.uk](mailto:editor@basinga.org.uk)**

## SITUATIONS VACANT – HELP NEEDED

### WEBMASTER

Our **Webmaster** will shortly be stepping down from **Basinga Extra**, leaving a vacancy for a capable IT person to manage the Basinga Website and photograph archive.

We need someone with general IT skills and in particular, experience with **Wordpress**, which is the application we use to support our website: Basinga Extra.

If you think that this might be you, please get in touch with [editor@basinga.org.uk](mailto:editor@basinga.org.uk)

### ADVERTISING MANAGER

After 30 years involvement in various roles with the Basinga, our current **Advertising Manager** is retiring; we are therefore looking for a replacement.

The role covers the administration of advertisers enquires (not selling) through to ordering and liaison with other members of the production team who place the advertisements into the magazine and website. The candidate should be familiar with the use of MS Word and Excel for record keeping. Full handover training will be given.

If you're interested or would like further information contact [advertising@basinga.org.uk](mailto:advertising@basinga.org.uk)

**Basinga Team**

## OLD BASING CARNIVAL

The Old Basing Carnival is incredibly lucky to have an amazing committee and army of helpers that come together every year to make the Carnival a success. Even when we are unable to undertake the Carnival, the commitment is still there to develop and muster the community spirit and seek ways of bringing smiles to faces around the villages with the amazing support of the community – whether it be Paddington Bear, a super hero or actual heroes – those working to keep us safe during these unprecedented time.

We look forward to seeing you for our **postponed 50th Carnival** on **19th June, 2021**, where the theme will be **“50 Golden Years – anything goes”**. If you have any pictures from across those 50 years, please do share copies with us – we hope to have a display at the Carnival next year.

So until then, thank you to all that have supported us over the years and for the amazing efforts with the wonderful array of scarecrows – put your trainers on and have a walk round and see the amazing scarecrows (you will find the maps on the committee Facebook Page and Carnival website) and we look forward to sharing the outcome of the Drawing Competition next month.

Take care and keep well at home.

**Joe Croombs** (Chair – Old Basing Carnival Committee)

Email: [oldbasingcarnival@gmail.com](mailto:oldbasingcarnival@gmail.com)

Tel. **07733 833486** (please note new details)



DO YOU HAVE A WILL IN PLACE?



CLARKE  
& SON  
SOLICITORS

A Will is quite possibly one of the most important documents you will ever sign.

Call now to book a free Will healthcheck or to start the process of making your Will.

Clarke & Son Solicitors LLP

Manor House 8 Winchester Road Basingstoke Hampshire RG21 8UG

T: 01256 320555

[www.clarkeandson.co.uk](http://www.clarkeandson.co.uk)

**M MARTIN**  
MATTHEWSON

Call Us:  
01256 364753

**ALL MAKES SERVICING & REPAIRS**  
**THE VOLVO & NISSAN SPECIALISTS**



MOT TEST  
CENTRE



Visit: [www.garagebasingstoke.co.uk](http://www.garagebasingstoke.co.uk)

FREE Local Collection & Delivery T&C's Apply



Unit 1 Pensell Farm, Farleigh Road, Cliddesden, Basingstoke, Hants. RG25 9A

[www.basingtutors.com](http://www.basingtutors.com)

## Basing Tutors

- One-to-One Tuition
- Friendly, personal approach
- Professional tutors

Full diagnostic assessment  
with no further obligation

Initial consultation  
free of charge

Tel: 01256 470948

Email: [admin@basingtutors.com](mailto:admin@basingtutors.com)

Local  
Tutors  
For Local  
People



**20% OFF**  
**selected products**  
**offer exclusively for**  
**Basinga readers**

(With this advert. New orders only)

Visit Basingstoke's most recommended bathroom  
& kitchen supplier and installer... [Checkatrade.com](http://Checkatrade.com)

**A1**  
**Bathrooms**  
& **Kitchens**

- Fully employed fitters
- 24/7 Emergency callout
- Project managed installation
- Comprehensive insurance
- 4 year labour guarantee



[Checkatrade.com](http://Checkatrade.com)

Ask to speak to any of our customers!

**Your Dream, Our Creation**

[www.a1bathrooms.co.uk](http://www.a1bathrooms.co.uk)

SHOWROOM: Unit 3, Cartel Business Centre, Stroudley Road, Basingstoke RG24 8FW T: 01256 810460

# OLD BASING BOILER SERVICES



Boiler Installations

Servicing and Repairs

Unvented/Vented Cylinders

Power Flushing  
of Heating Systems

Free Estimates

No Call Out Charge

Landlord Certificates

Fully Insured

01256819521 **Bill Martin** 07990514472

[www.oldbasingboilerservices.com](http://www.oldbasingboilerservices.com)

*Keeping you Gas Safe*



**CONTACT BASINGSTOKE  
01256 325575 ANYTIME**

**ARE YOU A WORKING WIFE?  
AND TIRED OF COPING WITH THE HOUSEWORK?**

## WE PROVIDE

REGULAR/HOUSE MOVE/END OF TENANCY CLEANS  
IRONING, OVENS AND CARPET CLEANING  
OVER 25 YEARS IN BASINGSTOKE



RING US TODAY FOR A FREE BROCHURE

**01256 325575**



# CHEQUERS

Independent Estate Agents



**Thinking of Selling in Old Basing/  
Lychpit in 2020 or on the market  
without results\*?**

**Choose an agent one step ahead of the rest...**

**Call 01256 810018  
and we'll get you moving**

*successfully selling property for over 28 years....*

[www.chequersstateagents.co.uk](http://www.chequersstateagents.co.uk)

T 01256 810018 E [sales@chequersstateagents.co.uk](mailto:sales@chequersstateagents.co.uk)

\*If you have instructed another agent or a sole agency and/or sole selling rights basis, the terms of these instructions must be complied with to avoid a possible liability to pay fees to commission.

### CORONAVIRUS (COVID-19) CRISIS

Lockdown measures were sufficiently relaxed at the end of May to allow the Archery, Bowls, Cricket and Tennis Clubs to return to the Recreation Ground subject to restrictions imposed by their respective governing bodies. This has meant that Court 1 which is normally available for public tennis is only available for use by Tennis Club members to comply with the LTA requirement for social distancing and sanitisation which is being observed by the Club. At the time of writing the MUGA, children's play equipment and adult exercise equipment also remain closed as do the public toilets. We will be following Government advice and will open these areas as soon as we are able to do so safely.

Lychpit Community Hall also remains closed and during this time has been deep cleaned and the floor polished and re-sealed in readiness for the time when it can reopen. We hope it will be possible to open the hall for regular hirers from September provided they can demonstrate they are able to implement social distancing and other measures required at the time. Further updates will be provided in the next Basinga, and on the Parish Council website and local Facebook page.

### ALLOTMENTS

Increased activity on the allotments due to the recent fine weather has led to cars being parked inside the allotment gates. This is a request to all allotment holders to use the car parks at either end of the allotments and only take vehicles into the site if you need to load/unload heavy items. We should also remind you that dogs are not permitted in the allotments and anyone taking their dog on to the allotments unless it is an assistance dog is in breach of their tenancy agreement.

### FOOTPATH IMPROVEMENTS

The resurfacing work on the driveway and footpath and improvements to parking areas at the Recreation Ground were completed in good time for the clubs returning and more visitors have since been using the Recreation Grounds for exercise and picnics. Please do use the litter bins provided or take your litter home.

We can report that Hampshire County Council is scheduled to resurface the footpath between Crown Lane and Church Lane, hopefully towards the end of August. Work to shore up the footpath along the River Loddon from Bartons Mill is still outstanding but will be done once approval from the Environment Agency has been obtained.

### PARISH COUNCIL MEETINGS

The next two meeting dates are **Tuesday 7th July** and **4th August at 7.30pm**. Meetings continue to be held remotely and residents wishing to "attend" are welcome. Agendas will be published on our website and notice boards in the usual way with full details of how residents can "attend".

Parish Clerk: **Mrs Sandra Tuck** Assistant Clerk: **Mrs Kate Hope**

Address: **The Pavilion, Recreation Ground, The Street, Old Basing, RG24 7DA. Tel. 01256 462847**

Office Hours: **Monday to Thursday 10am to noon**

Mobile: **07507 514498 (emergencies only)**

Email: **clerk@oldbasing.gov.uk**

Website: **www.oldbasing.gov.uk**



## R.T. MITCHELL & SONS BUILDING CONTRACTORS

*Est. in Old Basing 1972*

HOUSES

EXTENSIONS

GARAGES

LOFT CONVERSIONS

ALTERATIONS

RESTORATION OF LISTED BUILDINGS

Tel: 01256 352225

[www.rtmitchellandsons.co.uk](http://www.rtmitchellandsons.co.uk)



## The Water Softener Specialists



- Manufacturing water softeners for over 30 years
- Latest non-electric block salt water softeners
- New installations & repairs
- Advanced technology water filters for pure drinking water
- No call-out charge
- Based in Hook

*Fitted, fully reconditioned water softeners from just £395 (includes warranty).*

**Tel: 01256 768171**

**Mobile: 07836 247694**

**[www.amsmayfair.co.uk](http://www.amsmayfair.co.uk)**



## MIKE'S GARDEN SERVICES

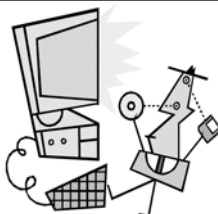
- General garden maintenance
- Landscaping and planting
- Garden clearances • Tree / hedge work
- Fence & shed work / treatments
- Lawn mowing • Turf laying
- No job too small • Fully insured
- Logs, Kindling and De-icer deliveries
- Free estimates • Competitive rates

**Tel: 01256 325015**

[mnm.chapman@talktalk.net](mailto:mnm.chapman@talktalk.net)

**[www.gardenerbasingstoke.com](http://www.gardenerbasingstoke.com)**

AFFORDABLE CARE & SUPPORT  
FOR ALL YOUR GARDEN NEEDS



## PC-fix-IT

Tel: 01256 474997  
or 07909 681606  
[www.pcfixit.co.uk](http://www.pcfixit.co.uk)

Repairs, Upgrades, Virus removal,  
Broadband, Internet, Wireless, etc.

*Reliable, experienced service.*



INTERIOR

EXTERIOR

## Painter's Pride



**EXPERIENCED HOUSEHOLD  
PAINTER & DECORATOR**

NO JOB TOO SMALL

**TEL: 01256 355356 or 07876 495657**



# World-Class Podiatry, Locally

## WHY see us?

We train to be the best we can be, so that we reach our potential and help you reach yours

## HOW do we do this?

By investing in world-class, cutting edge equipment and the latest evidence-based training for our TEAM

## WHAT does this mean for you?

Pro-active, forward-thinking and effective treatment in a welcoming and friendly environment

We combine our expert skills, our passion for seeing people at their best and our World-Class facilities and equipment to deliver excellence in Podiatric care

- Foot and leg pain
- Running injuries
- Hard Skin
- In-growing toenail management
- Video Gait Analysis using Optogait Technology
- Swift Verruca Treatment
- Shockwave Therapy for tendon injuries



To book an appointment to see a Podiatrist  
Call 0800 999 7337

OR visit  
[www.eclipsefootclinic.co.uk](http://www.eclipsefootclinic.co.uk)  
to book online

Visit us at Lychpit Surgery



Mention the code  
**BASINGA2** when  
booking your first  
appointment to  
receive a free gift!

## Transforming homes in Old Basing since 1996

Quote  
'BASINGA'  
for a preferential  
quote.



- ✓ Windows & Doors
- ✓ Conservatories & Orangeries
- ✓ Garage Doors
- ✓ Guaranteed Work
- ✓ Great Prices



Call 01256 841522

[riptonwindows.co.uk](http://riptonwindows.co.uk)

## LOCAL SHOPPING INFORMATION

Support our local shops, there is no reason, with the community's help, that anyone should be short of food in Old Basing and Lychpit. If we have missed anyone out or the details have changed please let us know at [advertising@basinga.org.uk](mailto:advertising@basinga.org.uk)

### OLIVER'S

**Oliver's** offer a home delivery service to Old Basing and Lychpit areas of their full takeaway menu. **Open Wednesday to Saturday, noon to 8pm. Deliveries every hour, last at 7pm. Last Order by 6.45pm (except Friday when last delivery is 4pm).** Card payment will taken over the phone but cash payments are still accepted and arrangements will be made upon ordering. Call **01256 321018** to order. Free delivery for residents of Old Basing and Lychpit. For **Takeaways** see instruction at **"Queue Here" window** on arrival. Visit: [www.olivers4fish.co.uk](http://www.olivers4fish.co.uk) for their menu.

### OLD BASING CONVENIENCE STORE

For the period of the emergency the **Old Basing Convenience Store** are providing a home delivery service of essential goods to vulnerable residents in isolation in the Old Basing area. Minimum spend of £10. **Deliveries** (no additional charge) take place **Wednesdays, Fridays and Sundays**. Telephone orders to Raj on **01256 464020** who will advise payment and arrangements for delivery. Contact can also be made via their Facebook page. Shop open **Monday to Saturday 7.30am to 5.30pm.; Sunday 8am to 4.30pm.**

### THE BOLTON ARMS

**The Bolton Arms** can deliver from their suppliers a wide range of products, from raw ingredients to toiletries and drinks (even alcohol !), plus their own menu of home-cooked foods. Open **Monday to Saturday 5 to 8pm; Sunday noon to 3.30pm.** Please contact them with your requirements on [chef@thebolton.com](mailto:chef@thebolton.com) or **01256 819457** or **819555** (both have answerphones). Deliveries to vulnerable residents normally within 24 hours.

### THE CROWN

**The Crown** is providing a delivery service for produce and cooked food. **Produce** can be pre-ordered **Tuesday to Saturday 10am to 2pm. Takeaways** available **Thursday to Saturday 5 to 9pm and a Sunday Roast noon to 5pm.** Orders can be placed online at [www.thecrownoldbasing.square.site](http://www.thecrownoldbasing.square.site) where the produce available and menu can be found. You can of course always call them on **01256 321424.**

### CROMWELL INDIAN CUISINE

**Cromwell Indian Cuisine**, Lychpit, is open for orders **5.30 to 10pm, except Mondays** when closed. Delivery available. Tel. **01256 476828.**

### BASING CHINESE TAKEAWAY

**Basing Chinese Takeaway** is open **Monday to Saturday, 5 to 9pm.** Tel. **01256 841818.**

### CO-OP

**Co-op** open **daily 9am to 8pm, also 8am to 9am** for elderly residents. Tel. **01256 362845.**

### TESCO EXPRESS

**Tesco Express**, Lychpit, is open **7am to 10pm.** Tel. **0345 0269191**

### DAY LEWIS PHARMACY

Pharmacy open **Monday to Friday 9am to 6pm (closed 1 to 2pm.).** Tel. **01256 477267.**

# The Barn Animal Hospital

The only Small Animal Hospital in the Basingstoke area.

Our friendly caring team welcomes new clients and their pets to our purpose-built veterinary hospital with 24 hour on-site nursing care.

- Vaccinations
- Puppy parties
- Pet passports
- Neutering
- Microchipping
- In-house laboratory
- Ultrasound, ECG
- X-ray & dental X-ray
- Endoscope
- Veterinary ambulance



**The Barn**  
Animal Hospital

W: [www.barnvets.co.uk](http://www.barnvets.co.uk)

T: 01256 329 522 E: [reception@barnvets.co.uk](mailto:reception@barnvets.co.uk)

A: Paynes Meadow, Lychpit, Basingstoke, RG24 8AD

## CONSIDER IT DONE!



## PAINTING & DECORATING HOUSEHOLD MAINTENANCE

**\*\* FULLY INSURED \*\***  
**\*\* HIGHLY EXPERIENCED PROFESSIONAL \*\***  
**\*\* DILIGENT & TRUSTWORTHY \*\***  
**\*\* REFERENCES AVAILABLE \*\***

Call Graham: 07494 294246

Email: [consideritdone.hampshire@gmail.com](mailto:consideritdone.hampshire@gmail.com)

Facebook: [www.facebook.com/consideritdone80](http://www.facebook.com/consideritdone80)

# Lamberts Plumbing Services

PLUMBING & HEATING CONTRACTORS

**BOILER INSTALLATION & SERVICING**

**BATHROOM INSTALLATION & TILING**

**GAS SAFETY INSPECTIONS**

**ALL ASPECTS OF MAINTENANCE REPAIRS**

**NO JOB TOO BIG OR SMALL**

Railside, Station Road, Hook, Hampshire RG27 9HT

Tel: 01256 783597 • Mobile: 07501 559668

Email: lamberts\_plumbers@yahoo.com www.lambertsinhook.co.uk



- Window Cleaning - sills/frames/doors + text alert eve before + convenient online payment
- Professionally Qualified Carpet Cleaning
- Driveway Cleaning and Restoration
- Gutters/Fascias/Soffits Cleared and Cleaned
- Roof Moss Removal and Cleaning
- Patio and Decking Cleaning and Treatments
- Conservatory Valets
- Steam Cleaning
- Softwashing

**Local | Experienced | Insured | Reliable**

Contact now for your FREE quote:  
**01256 973144**

info@cawleycleaningservices.co.uk

www.cawleycleaningservices.co.uk



facebook@cawleycleaningservices

**Start every  
day with  
a healthy  
smile**



**Local, friendly,  
professional  
dental surgery**

- High quality general dentistry
- Cosmetic dentistry
- Orthodontics
- Teeth whitening
- Implants
- Facial aesthetics
- Early morning, late evening and Saturday morning appointments
- Children seen free on NHS
- Reduced rates for 18-22 year olds
- Denplan

**Call 01256 840141**

www.guineacourtdental.co.uk

21-22 Guinea Court, Chineham, Basingstoke RG24 8XJ



**Guinea Court  
Dental Surgery**



## CHINEHAM CENTRE SHOPS

Circumstances might dictate that stores may change their open times at short notice. This information was made available by the Management at [www.chinehamshopping.co.uk](http://www.chinehamshopping.co.uk) If you find any changes please let us know on [advertising@basinga.org.uk](mailto:advertising@basinga.org.uk)

### TESCO

Open **Monday to Saturday 8am to 10pm; Sunday 10am to 4pm (Monday, Wednesday and Friday 9 to 10am prioritised for elderly and most vulnerable; Sunday 9am to 10am Sunday prioritised for NHS staff)**. Only **80** customers allowed in store at one time. Tel. **03456 779039**.

### ICELAND

Open **Monday to Saturday 9am to 6pm; Sunday 10am to 4pm**. Every day in the week the **first hour** of trading is for over **70s and vulnerable persons** and the **last hour NHS staff**. Only **20** customers allowed in store at one time. Tel. **01256 321723**.

### SUPERDRUG

Open **Monday to Saturday 9am to 5pm; Sunday 10am to 4pm**. Only **10** customers allowed in store at one time. Tel. **01256 465200**.

### MARKS & SPENCER SIMPLY FOOD

Open **Monday to Saturday 8am to 8pm; Sunday 10am to 4pm**. **First hour Monday and Thursday** for over **70s and vulnerable persons**. **First hour Tuesday and Friday** for **NHS staff**. Only **40** customers allowed in store at one time. Tel. **01256 326429**.

### POUNDLAND

Open **Monday to Saturday, 8am to 4pm; Sunday 10am to 4pm**. Only **20** customers allowed in store at one time. Tel. **01256 365192**.

### BOOTS

Open **Monday to Friday 9am to 7pm; Saturday 9am to 5pm; Sunday 10am to 4pm**. Each day the **pharmacy** will be **closed 1 to 3pm**. Only **10** customers allowed in store at one time (**5 Pharmacy and 5 in Store**). Tel. **01256 417414**.

### PETS CORNER

Open **Monday to Saturday 9am to 5pm; Sunday 10am to 4pm**. Carry-to-car and home-delivery available within a 10-mile radius. Only **2** customers allowed in store at one time. Tel. **01256 361963**.

### DOMINOS

Open **daily 10am to midnight** for **telephone orders** for **delivery only**. Tel. **01256 810030**.

# Looking for independent financial advice you can trust?

We'll help you create, increase and protect your wealth. Our personal service is designed to build a shared understanding of your wealth objectives and to translate these ambitions into reality.

To find out more, please call

**01276 34932**

**S4financial**  
SUPPORTING YOUR FINANCIAL LIFE



 **01276 34932**

 **www.s4financial.co.uk**

- \* Family Wealth Preservation
- \* Wealth Management
- \* Tax Planning
- \* Protection Planning
- \* Retirement Planning
- \* Mortgages

The value of investment can fall as well as rise. You may not get back what you invest. Your home may be repossessed if you do not keep up payments on your mortgage. There is normally a fee for advising on and/or arranging a mortgage, the precise amount will depend on your circumstances but we estimate that it will be £495.

**R.LOVELOCK**  
HEATING & PLUMBING

ALL ASPECTS OF PLUMBING  
INCLUDING

- BOILER FITTING • SERVICING & REPAIRS
- GENERAL PLUMBING

TEL: 01256 421138  
MOB: 07383 064464  
EMAIL: [contact@rlovelockheating.co.uk](mailto:contact@rlovelockheating.co.uk)



*lsc*  
LOUISE SANDERS  
OSTEOPATHS

Free car park  
Emergency appointments  
Home visits  
Free advice on rehabilitation  
Free advice on exercises  
Free ergonomics advice

DO YOU SUFFER FROM.....

Back Pain, Sciatica,  
Headaches,  
Sports Injuries,  
Shoulder Problems  
Neck Pain, Joint Pain,  
Elbow & Wrist Problems,  
Muscular Strains

**PJH**  
Window Cleaning Services  
Local, reliable window cleaner  
For a free, no obligation quote for  
• Window cleaning • Facias  
• Gutters • Conservatory Roofs

Please call Pete on  
**07762 616600**  
e-mail: [pihcleaning@gmail.com](mailto:pjhcleaning@gmail.com)

OLD BASING  
Old Basing Health Centre,  
Manor Lane  
Old Basing | Hampshire | RG24 7AE  
**01256 868 370**

## CLASSIFIED ADVERTISEMENTS



### Piano Lessons

All ages and abilities

Beginners welcome

Qualified and experienced teacher

Philippa Ford 01256 470174



### Jane Stockdale

#### HOME COOKING FOR ALL OCCASIONS

SPECIALISING IN CAKES & CANAPES

Tel. 01252 723161 / Mob. 07775 696918

### PROFESSIONAL FOOT CARE IN THE COMFORT OF YOUR OWN HOME

Fay Curtis MCFHP MAFHP, fully qualified Foot Health Practitioner offers a range of foot services including:

Toenail cutting, Nail condition treatments, Corn removal, Callus reduction, Dry and cracked heel remedies, Verruca treatment and Diabetic foot care.

To book an appointment call

Fay on 07780 664410

*Affordable marketing support for small businesses*



- Marketing support and advice
- Graphic design - adverts, leaflets, posters
- Copywriting and content creation
- Website design

☎ 07810 565122  
✉ [hello@loupcreative.com](mailto:hello@loupcreative.com)  
🌐 [www.loupcreative.com](http://www.loupcreative.com)



### BASINGA:

We have vacant contract advertising space available for 2020, if you are interested contact the Advertising Manager on:  
[advertising@basinga.org.uk](mailto:advertising@basinga.org.uk)

*Submissions to the magazine and website can be made via [www.basinga.org.uk](http://www.basinga.org.uk) using the web forms:*

*Selection for Articles/Letters and Diary Dates will be found on the "Submissions" drop down and for Free and Concession Ads on the "Advertise with us" drop down. Paid advertising enquiries can also be made in the same way.*

*Submissions made via the forms now provide a common input for both the magazine and website and are automatically routed to the member of the team responsible for processing them. All submission must be received by the 10th of the month (6th in December) previous to the magazine issue month.*

*If you have trouble finding the forms, you can of course contact us and we will advise.*

*Our privacy Policy is available to read on the website which includes the new GDPR requirements for publishing photographs.*

*Contacts for general enquiries and assistance:*

*[advertising@basinga.org.uk](mailto:advertising@basinga.org.uk) or [editor@basinga.org.uk](mailto:editor@basinga.org.uk) or [webtech@basinga.org.uk](mailto:webtech@basinga.org.uk)*

*All Advertisements in the magazine and website are inserted in good faith and the Basinga Management Committee accepts no responsibility for any statement, omission or errors made by the advertisers; nor endorses the products or services advertised. The views and opinions expressed in the Basinga are those of the organisations, individuals and authors concerned and not necessarily those of the Basinga Management Committee.*

# brain chase coles

Solicitors

Look no further for your  
local legal experts



[www.brainchasecoles.co.uk](http://www.brainchasecoles.co.uk)

Tel: 01256 354481 | [enquiries@brainchasecoles.co.uk](mailto:enquiries@brainchasecoles.co.uk)

Property · Wills & Probate · Family Law · Family Mediation · Notary Public

Haymarket House, 20-24 Wote Street, Basingstoke, Hampshire RG21 7NL



**R.KNIGHT**  
**JCB & PLANT HIRE**

**All Ground Work Undertaken**

**Fencing & Tree Work**

Tel: 01256 324588

Mobile: 07703 458372

Groundworks | Footings | Driveways | Landscaping

## **W.T.HILL** **Painter & Decorator**

Internal & External

Domestic & Commercial

Over 30 Years Experience

Tel: 07748808069/01256 467901

Free Quotations

## **GARDEN SOLUTIONS** **NEIL INKLEY**

SPECIALIST IN FENCING, TURFING,  
PATIOS ALSO GENERAL GARDEN WORK  
including Lawns, Hedges, Clearance,  
and Pressure Cleaning

**Local References      Free Estimates**

01256 882108 or 07768 105488



## FREE ADS – BUY AND SELL

**Note:** All ads are processed in received date order. Ads not included this month will be entered in next issue, space permitting. If you do not want your ad to appear later contact the Advertising Manager. Ads also appear on the web site with photographs if available.

<b>WHITE FOLDING DESK CHAIR</b>	<b>£ FREE</b>	<b>07740353465</b>
---------------------------------	---------------	--------------------

Free to collect, call Amanda.

<b>BLACK PLASTIC DESK CHAIR</b>	<b>£ FREE</b>	<b>07740353465</b>
---------------------------------	---------------	--------------------

Free to collect, call Amanda.

## CONCESSION ADVERTS – WHAT'S ON

No submissions this month

## ADVERTISERS NEWS

Many more of our advertisers are now open for business, please support them.

We welcome two new contract advertisers this month, Martin Cole Plumbers Ltd., and Odiham and Old Basing Health Centres, both on page 2.

Beechdown have now opened some new outdoor fitness facilities, see back page.

## ROTARY WORKS WITH SHELTERBOX

### COVID 19 AND EMERGENCY DISASTERS

There may be a pandemic but some communities in the world are also dealing with natural disasters and conflict which leaves them with nowhere to live whilst still living with the virus,

**ShelterBox** is an international disaster relief charity established 2000 by Rotarians in Helston, Cornwall, UK. They provide emergency shelter and other aid items to families around the world who have lost their homes. Shelterbox is working to help people protect themselves in dangerously crowded camps in Syria and disaster zones in flooded areas of Indonesian and many other places

A full Shelterbox provides a robust tent and the basic essentials for sleeping, cooking and water purification for a family of 10 to survive for 6 months. If needed in that area, mosquito nets will be included. There will also be small toys and books and pencils for children

'Having somewhere dry and warm to sleep, to prepare meals and be with your family is vital for starting the long process of rebuilding your life'

Shelterbox are partners with Rotary International, and Rotarians around the world help shelterbox to connect with local communities more quickly when disaster strikes.

The charity's HQ is based in Truro, Cornwall UK and they coordinate disaster relief and get it to where it is most needed even in a pandemic.

**To Donate visit their website <https://www.shelterbox.org>**

As coronavirus spreads, Shelterbox saves lives.

Check our Website and Social media for updates.

## BEST OF FLOORING

Laying down a good reputation

Suppliers & Installers of:

- Wood Flooring
- Laminate Flooring
- Underfloor Heating
- Carpets & Vinyls
- Amtico

Home Sample Service Available  
Free Estimates & Expert Advice

Unit 3 Cufaude Business Park,  
Cufaude Lane, Bramley, Basingstoke, Hampshire RG26 5DL

Showroom Open Friday 10am-4pm, Saturday 10am-1pm

Tel: 01256 810327

[www.bestofflooring.co.uk](http://www.bestofflooring.co.uk)

Email: [sales@bestofflooring.co.uk](mailto:sales@bestofflooring.co.uk)

**Checkatrade.com**



**OVENCLEAN**  
The original oven cleaning specialists

Non-Caustic Fresh Solution Used Every Time  
Ovens ~ Hobs ~ Extractors  
Microwaves ~ Aga's ~ Ranges Cleaned

FOR A FREE NO OBLIGATION  
QUOTE PLEASE CALL

**01276 473118 - 07882 886736**  
[www.ovenclean.com](http://www.ovenclean.com)



DESIGN & BUILD, PLANTING, DECKING, FENCING  
TURFING, PATIOS, DRIVEWAYS & MAINTENANCE  
FULLY INSURED & CRB CHECKED

CONTACT JONATHAN FOR A FREE QUOTATION

**01256 412723 - 0771 7214521**

E: [info@jcooklandscapes.co.uk](mailto:info@jcooklandscapes.co.uk)

[www.jcooklandscapes.co.uk](http://www.jcooklandscapes.co.uk)

# B&M FENCING

## GARDEN & LANDSCAPE SUPPLIES

- |                     |                      |                    |
|---------------------|----------------------|--------------------|
| • Panels (3' - 6')  | • Reclaimed Sleepers | • Sharp Sand       |
| • Trellis           | • Softwood Sleepers  | • Building Sand    |
| • Concrete Post     | • Oak Sleepers       | • Ballast          |
| • Closeboard Panels | • Decking            | • Scalpings        |
| • Natural Sandstone | • Rolawn Turf        | • 10mm Gravel      |
| • Paving Slabs      | • Topsoil            | • 20mm Gravel      |
| • Block Paving      | • Landscape Bark     | • Decorative Stone |

Delivery Service Available

Mon-Fri  
7.45 - 5pm  
Sat 9am - 5pm

**01256 762739**

Fencing  
Fitting Service  
Free Estimates

[www.bmfencing.co.uk](http://www.bmfencing.co.uk)

Reading Road, Hook, Hants, RG27 9DB

[enquires@bmfencing.co.uk](mailto:enquires@bmfencing.co.uk)

## NEWS FROM BASING HOUSE

There are plans afoot for the reopening of Basing House, but at the time of writing it is too early to give a date – there is still much water to flow under many bridges before that happens. For up-to-date information [www.hampshireculture.org.uk/basing-house](http://www.hampshireculture.org.uk/basing-house) or the **Basinga website**.

Lockdown struck three weeks before Basing House's seasonal opening, and caught us with much gardening and general maintenance work in progress – and the fact that the work was in progress has been visible to anyone who has passed the Great Barn over the last ten weeks. This all has to be finished, and fourteen acres of uncut grass brought under control before we can open. And it has to be remembered that we are a ruin and that we have to make sure that long grass and vegetation don't cover and holes or other hazards. So it could be a while yet.

On the events page of our website you can see the state of play with the events that were planned, many (but not all) of which bear the dreaded word "cancelled". Some, later in the summer do survive at present and we can keep our fingers crossed that they will happen

**Andrew Howard** (tel. **01256 327014**)

## LINGUATASTIC LANGUAGE SCHOOL

Firstly, apologies for any confusion caused by the beginning of last month's article stating that in the UK, Father's Day was being celebrated on Sunday 14th June when it was, of course, being celebrated on the 21st! Anyway, that mistake aside, we have been quite on the ball and have been learning about the different international days/weeks dedicated to different causes. This has offered us the opportunity to not only learn words in another language, but to engage in some cross-curricular learning by also working on science, maths, geography and PSHE Education.

Amongst other topics, we've looked at were Mental Health Awareness Week, focussing on Kindness (to ourselves and others); World Environment Day, when we learnt about biodiversity, food chains and recycling; World Oceans Day, when we talked about the different oceans there are, their sizes and why they are important.

Feedback from parents has been extremely positive, with many appreciating how such lessons help to provide some kind of structure in the week. It has also been nice for the children to talk to others about things going on in their week (which we then of course translate into the target language) and we've noticed how it's even spontaneously brought up things on their mind such as coronavirus and after the extremely sad death of George Floyd, racism.

Apart from the benefits lessons are bringing to the children, we are also proud to announce the small contribution we have been able to make to charity. Whilst we are facing our own challenges, we strongly feel that it is important to share the burden and wanted to do something to help out and so we have donated over £400 from our online classes to the NHS and Médecins Sans Frontières (MSF) to help support the incredible work their members are doing, in such difficult and scary circumstances, both locally and around the world. We'd like to thank all of those who have been supporting us and in turn also them.

Remember, we have classes for preschoolers, primary and secondary school children and adults in French, German, Spanish, Italian and Mandarin, to find out more simply email: [info@linguatastic.com](mailto:info@linguatastic.com)



# ST NICHOLAS' SCHOOL

FLEET - HAMPSHIRE

An independent day school for boys aged 3-7 and girls aged 3-16

- Small class sizes
- Inspirational teachers
- A caring, family ethos
- Purpose-built facilities
- Outstanding results
- "Excellent" ISI Inspection
- School buses run from Alton, Bentley, Basingstoke, Bramley, Chineham, Hook, Old Basing, Odiham, Hartley Wintney, Fleet, Farnham, Rowledge, Yateley, Camberley, Farnborough and Aldershot

## Open Evening

Wednesday 6th May 2020

4.30pm – 7.30pm

## Year 3 & Reception Taster Day

Friday 1st May 2020

8.45am – 3.30pm

## Senior Taster Day (Year 7 2021)

Thursday 14th May 2020

8.45am – 3.30pm



T: 01252 850123 | E: registrar@st-nicholas.hants.sch.uk

f @stnicholasschool | t @stnicholasfleet

st-nicholas.hants.sch.uk

# Looking for a Letting Service from an Agent who cares?

# You'll find us on The Street



all  
**aspects**  
LETTING  
SERVICES

## 20% Discount with this advert

# T: 01256 470411

69A The Street, Old Basing RG24 7BY  
info@allaspectsettingservices.co.uk

Zoopla



PROPERTY MANAGEMENT • RELOCATION CONSULTANTS • INVENTORY SERVICES



## OLD BASING & LYCHPIT VILLAGE SHOW

After fully reviewing the COVID-19 situation and the continued need for social distancing, it is with regret that the committee has taken the decision to **cancel the 2020 Village Show**. Instead, we will have an online “virtual” competition for a photograph of your allotment/ garden and for a photograph of your planter/hanging basket. There will also be Children’s classes for a photograph of transport or painting of “a big red bus”, depending on age. Details of how to enter the 2020 online competition and the 2020 competition rules can be found on the website **[www.oblvs.org.uk](http://www.oblvs.org.uk)**

The **2020 AGM** is currently planned to take place on **Tuesday, 10th November, at 7.30pm** ,in the **Pavilion Tea Room, Recreation Ground**. Please continue to monitor this website for any further updates.

Last, but by no means least, we intend to return with a **full show** on **Sunday, 5th September, 2021**, and hope to see you there. In the meantime, thanks to all entrants, visitors and sponsors for your continued support.

## CHINEHAM MEDICAL PRACTICE PATIENT PARTICIPATION GROUP

COVID-19 has presented us with a substantial challenge over the past two months and the Chineham Medical Practice wanted to thank patients for their support, patience and resilience during this time. Out of necessity the way care for patients has changed in order to keep both patients and staff safe. This has meant all initial contacts are now made through telephone or video call.

The practice has seen that a lot of the work people would previously attended the practice for, we can be delivered safely and effectively via phone and more recently video consultation. In the future in the next phase of how we manage COVID-19, the normal care provided for patients will start to resume, although how this is safely and efficiently achieved is still be considered.

If you haven’t already and need advice, why not try using our online consultation, **e-consult**? This is accessible through the practice web page. You can use this to ask questions about new or existing problems and can submit helpful information about long-term conditions like blood pressure monitoring. The practice aims to respond with these in 48 hours and often this will be via a text message. Text messages are playing an increasingly valuable role in both giving information or advice and also helping GPs understand your issues better. Pictures can now be sent in reply which has helped manage things remotely. Similarly, utilising video consultations regularly have been an effective way of managing many conditions and allows you to remain in the comfort and safety of your own home. There may still be times when you need to physically see a doctor/nurse/ health care assistant and this can be done at the practice with full protective equipment.

It’s difficult to predict how long these arrangements will be necessary. Your support and help to deliver the safest and most effective service is appreciated. Thank you.

If you are interested in finding out more about joining the patient participation group please contact: **Karen Nicholls**, tel. **01256 479244**. Many thanks for your consideration.

**Karen Ashton** (Chair of Chineham Medical Practice PPG)

## HOPE IN UNCERTAIN TIMES

July is often a month of change for young people, as the school year comes to an end and they begin to prepare for new beginnings. It can be an anxious time, not knowing quite what is around the corner. This year our young people, along with the rest of us, have been living with constant change and uncertainty for longer than just this month. Since March we have experienced profound change – almost everything about our lives from the way we shop to the locations where we work and go to school, to who we can meet, has been altered.

This alone has been disconcerting, but the sheer amount of change has added an extra layer of stress to an already challenging situation. For it has not been one change – it's been many, coming, at times, at an almost dizzying pace. As I write this, lockdown is starting to ease and we are continuing our preparations to re-open the church building. However, coming out of lockdown feels as though it presents as many challenges as entering it. As we look to re-open our church building, the guidance that we need to follow is being updated every few days, and by the time this letter is published in a couple of weeks things will likely look different again. When all around us is changing and much is unknown, the world can seem like a scary and uncertain place. It can make us all anxious and heighten tensions.

When facing uncertainty and anxious times there are some words of a chant from the Taizé community in France that I come back to that remind me that God is with us whatever we face. "God, let my thoughts be gathered to you. With you there is light, you do not forget me. With you there is help, with you there is patience. I do not understand your ways, but you know the way for me." These words are based on a prayer of Dietrich Bonhoeffer, a young German pastor who died resisting the Nazis in Germany in 1945; the prayer was written while he was in prison. He trusted firmly in God, and God's presence with him, even in the darkest times. It is a powerful reminder that God is with us whatever we face, helping us to find a way through, and even able to bring good out of our difficulties. It is a confidence that we find in the Bible too, in the words of St Paul's letter to the Romans: 'suffering produces endurance, and endurance produces character, and character produces hope, and hope does not disappoint us, because God's love has been poured into our hearts through the Holy Spirit that has been given to us.' (Romans 5:3-5)

I pray that in these anxious, uncertain and changing times, we may know God's Holy Spirit guiding us, and filling us with hope.

With love and prayers,

*Reverend Heather*



## THIS MONTH AT ST MARY'S CHURCH

### CHURCH OPEN FOR PRIVATE PRAYER

#### SUNDAY AFTERNOON AND THURSDAY MORNING



As this goes to print, we had just welcomed the government's announcement that we will be able to reopen St Mary's church for private prayer. While the government's advice remains that we should stay at home as much as possible and limit our contact with other people, we are

aware that this lockdown is having a large impact on people's mental health. We hope that the church can offer a place of sanctuary once again. The plan initially is to reopen the church for private prayer on a Sunday afternoon and Thursday morning.

Please be aware that numbers inside the church will be limited, and that at busy times you may need to queue. Please use the hand sanitiser on entering and leaving the church, and observe social distancing when in the church. For now the toilets will remain closed.

Please check our **Facebook page** for further updates (**St Mary's Old Basing and Lychpit**).

### ONLINE SERVICES

We are **live-streaming** some services via our **Facebook page (St Mary's Old Basing and Lychpit)**, with all welcome to join these services whilst the church building is closed for public worship

#### Morning Prayer

**Monday to Friday 9.15am**

#### Sunday Worship

**9.30am** – service sheet is available on the St Mary's website:  
**[www.stmarysoldbasing.org.uk](http://www.stmarysoldbasing.org.uk)**

If you have a **prayer request** then please give **Rev'd Heather** a call or send a text on **07745 731729** or email: **[vicar@stmarysoldbasing.org.uk](mailto:vicar@stmarysoldbasing.org.uk)**

If you'd like to be added to our **distribution list** for **Revd Heather's weekly message** please email our Administrator, **Debbie Filer**, email: **[admin@stmarysoldbasing.org.uk](mailto:admin@stmarysoldbasing.org.uk)**

### SUPPORT DURING THE CORONAVIRUS OUTBREAK

St Mary's is a local hub working with **Basingstoke Voluntary Action** and **Basingstoke Council** for those needing support at this time, whether that be in terms of practical help such as shopping and the collection of prescriptions or if you are feeling isolated and would welcome a friendly phone call. Please contact **Rev'd Heather** directly on **07745 731729** or email: **[basinghub@gmail.com](mailto:basinghub@gmail.com)**

### BASINGSTOKE FOODBANK – DONATION REQUEST

The **Foodbank** is facing a high level of demand and would appreciate any support that you can give in terms of donations. St Mary's continues to be a collection point for the Foodbank. Please leave items in the crate on the Vicarage porch (the Vicarage is located on the corner of Church Lane and Milkingpen Lane). There is also a collection box in Tesco at Chineham. For a list of items that are in particular short supply please visit **[www.basingstoke.foodbank.org.uk](http://www.basingstoke.foodbank.org.uk)**

## CHURCHYARD CONSERVATION GROUP (PIOCC)



All **Working Parties** are **CANCELLED** until further notice, due to the coronavirus. They will not resume until church services are once again permitted. We look forward to welcoming our volunteers once life returns to normal. Meanwhile we hope you and your families remain healthy. Thank you for your support.

Last month with the easing of May's heatwave the grass started to grow hiding the cowslips as they start to seed. One morning we found 11 different grass species in flower. Although by now they will be in seed, they still create a wonderful habitat for roosting butterflies and other insects. The high-summer flowers are here; blue Meadow Cranesbill, lilac-coloured Field Scabious and the purple heads of Common Knapweed flowers. Meadow Brown and Ringlet butterflies love the flowers and grasses in the more open Central Glade while Speckled Woods prefer the woodland through which they flit on sunny days.

We hope you will continue to enjoy watching the birds, butterflies and flowers in your gardens or from your windows. Take care and keep well. For further information please ring **Fay Farrant** on **01256 476863**.

**Margaret Carr – [www.stmarysoldbasing.org.uk](http://www.stmarysoldbasing.org.uk)**

## PLAY AREAS AND OUTDOOR GYMS SET TO REOPEN IN JULY

**Play areas and outdoor gyms are set to reopen from Saturday, 4th July**, in line with the latest Government guidance. Basingstoke and Deane Borough Council will start reopening its 150 play areas in the borough from Saturday, 4th July, but has asked residents to be patient while the necessary health and safety inspections are carried out and signage is installed at each location. The council's play inspection team will also be reopening 50 play areas belonging to parish and town councils in the borough as well as outdoor gyms. Before each play area and outdoor gym can be safely reopened it must be inspected and residents are asked not to use the equipment until the council's team has carried out this work and declared it fit for use. Families and those wishing to exercise on the gym equipment will also be asked to follow the latest social distancing guidance when using the facilities. Play areas and outdoor gyms in the borough were closed in March due to the pandemic. Their reopening has been announced as part of the latest set of COVID-19 recovery guidance issued by the Government.

Cabinet Member for Planning, Infrastructure and the Natural Environment Cllr Mark Ruffell said: "It is great news that at long last play areas and outdoor gyms are going to reopen and I know this will please a large number of families and exercise enthusiasts in the borough. We are incredibly proud to have 150 very popular play areas across Basingstoke and Deane and each one will need to be individually inspected and new signage put up to help keep people safe when visiting. We are working hard to reopen these and the 50 parish and town council owned play areas and outdoor gyms from Saturday, 4th July. We will complete this work as quickly as we can and ask residents to only use a play area or a piece of outdoor gym equipment if it has been declared safe by our inspectors and is clearly open from Saturday, 4th July, onwards."

For more information visit **[www.basingstoke.gov.uk/playareas](http://www.basingstoke.gov.uk/playareas)**



# Berryford

Accountancy Services

## Do you need an accountant?

We offer an accountancy service for small businesses and individuals

Year End Accounts  
Bookkeeping  
VAT and Tax  
Personal Tax Returns

01256 472832 07790 948310

mike@berryford.co.uk

www.berryford.co.uk

## A. SEWELL

www.asewell.co.uk



### Lighting, Electrical & Audio Visual

All Lighting and Electrical work undertaken including:

- Security & Emergency Lighting
- Interior & Exterior Lighting Design & Installation
- TV, Telephone and Data Distribution
- Multi-room Audio/Visual
- Alarm Systems, CCTV & Door Access Systems
- Electrical Alterations & Re-wires



01256 329893

01252 844663



## Home Maintenance Services

Family Business • Fully Insured • Free Quotations

References by Request • 25 Years' Experience

### Jobs Undertaken

Fencing • Drylining/Studwalls • Painting/Decorating  
Laminate Flooring • 2nd Fix Carpentry • Plumbing • Tiling  
Fitting/Designing of Kitchens and Bathrooms

## Marcus Underdown

Property Maintenance Expert

01256 479327 • 07878 078135

mtunderdown@virginmedia.com

"We do anything from changing a tap to refurbishing your bathroom"

## OLD BASING VILLAGE HALL

*Whatever your function needs  
your  
Village Hall can meet them.*

Contact: Sandie Rice

Tel: 07544 289932

Email: bookings@oldbasingvillagehall.co.uk



## A-Foardable Domestics

WE REPAIR....

Washing Machines, Cookers, Dishwashers, Fridge Freezers,  
Ovens, Vacuum Cleaners & Tumble Dryers.

Repairing  
Since 1995

Low  
Pricing

Family  
Run

Qualified  
Engineers

Basingstoke  
Based

Call: 07891 465499 | Email: afdomestics@engineer.com  
Web: www.afdomestics.com

## RE-COMMENCEMENT OF THE NO 55 BUS SERVICE

It is with pleasure that the **No 55 Bus Service restarted operations** on **Monday, 15th June**. Initially, it will operate twice per day for the full five days still using the pre-booking system introduced in March as a response to the advent of the COVID-19 pandemic. As before, to book a journey, please phone **Basingstoke Community Transport (BCT)** on **01256 320501**.

The service will adhere to the Government guidelines on Social Distancing, therefore not all seats will be able to be used. To enable BCT to operate the service within the scope of those guidelines, BCT will ensure they are adhered to by utilising 16 to 25-seater vehicles. In time and as the Government relaxes/cancels the rules, BCT will eventually return to the full and popular service Old Basing became accustomed to prior to the crisis.

**Cllr Alan Jones**

## THE MILLFIELD CONSERVATION GROUP



With the ease of lockdown and the lovely weather sadly the nature reserve has become a magnet for visitors in particular for picnics. Although we welcome everyone to enjoy our lovely wildlife the site has become overrun at times, with BBQs (despite signage saying not allowed) and subsequent fire risks, litter and people just sitting anywhere they like trampling flowers such as orchids in the process. We have asked the council to provide

more onsite support but I hope it doesn't impair your enjoyment of the field.

With Jim and his new camera having free time to roam the site (check out the amazing pictures and videos on our Facebook page), he has been able to record far more than usual including: Marsh Fritillary (first record for the Reserve and the Borough); Hairy Hawker Dragonfly (first for the Reserve); *Platystomos albinus* which is a Deadwood Beetle that's an uncommon UK insect (1st for the Borough); four new Bird species (Common Scoter which is a sea duck which was known to migrate across land but due to Lockdown the true picture has come out; Bar tailed Godwit; Curlew Sandpiper and Dotterel) all flying over on route to their nesting grounds. Lockdown Species Total so far: Dragonflies/Damselflies 11; Birds 110; Butterflies 20 and at least 22 Mammal species (including bats).

An upside of lockdown has been the opportunity of seeing some of the secretive wildlife of the site, for example Stoat, Grass Snakes, Slow worms and the Deer and Foxes. So keep your eyes peeled, July is a vibrant month for the wildlife in the field; Parent Goldfinch will be carrying food back to feed their young in the nest and Whitethroats will be stalking around the scrub. During the day the stream is a popular spot for Swallows and House Martins swooping in on flying insects whilst visitors later in the evening will see an increase in the number of bats on the wing. Our butterflies and moths are emerging on sunny days so look out for daytime moths such as the Silver Y and the Burnet, distinctive for its red spots on black wings. Those looking for plants in July will find the Bee and Common Spot orchids, as well as the flowering of the towering Woolly thistle.

**Anne Francis – tel. 07974 944439**

Email: [millfieldoldbasing@yahoo.co.uk](mailto:millfieldoldbasing@yahoo.co.uk) Facebook: **Mill Field Conservation Group**



**Lisa Ives** M.Ost PgCACE MSCCO  
GOsC Registered Osteopath  
**01256 316566**  
**07814 365523**

Back & Neck Pain/Ache  
Sporting Injuries  
Muscular Strains & Ligament Sprains  
Muscle Tension  
Sciatica  
Spasms  
Neuralgia & Fibromyalgia  
All Joint Pains  
Arthritic & Rheumatic Pain  
Structural & Cranial Osteopathy  
Ultrasound & Dry Needling

### Lisa Ives Osteopathy®

Grove House, Lutyens Close, Chineham Court,  
Basingstoke, HAMPSHIRE, RG24 8AG.

[www.lisaivesosteopathy.co.uk](http://www.lisaivesosteopathy.co.uk)  
[enquiries@lisaivesosteopathy.co.uk](mailto:enquiries@lisaivesosteopathy.co.uk)



**HeatOn**  
Gas & Heating Services™

**Installation, Service, Repairs**  
**Your local Gas & Heating Specialists**

- Boiler & Heating Breakdowns
- Smart Control Upgrades
- Heating & Boiler Installations
- Servicing

Even the small jobs:  
Repacing a Radiator, Thermostat  
or just fixing a leak.

Telephone 07925 665636  
[customer.services@heatonghs.co.uk](mailto:customer.services@heatonghs.co.uk)  
[www.heatonghs.co.uk](http://www.heatonghs.co.uk)



**Checkatrade.com**  
Where reputation matters



## BASING HOUSE RUINS AND GROUNDS

Plus museum, garden, activity trail, workshops,  
outdoor theatre, special events and more!



### THINGS TO DO

- Discover the Great Barn and spot the artillery damage still visible on its walls
- Explore the ruins and imagine what the house would have looked like
- Visit the walled garden and learn about Basing House's fascinating history in the museum
- Walk your dog or find a picnic spot

### INFORMATION

Pay once, visit all year! With your ticket, you can enjoy unlimited visits to Basing House and return as many times as you like for a whole year! See our website for full details, admission prices and opening times.

Starting to reopen in stages from July. See website for details.

**BASING HOUSE** | Barton's Lane | Basingstoke | Hampshire RG24 8AE  
Please call 01256 639550 or email [basing.house@hampshireculturaltrust.org.uk](mailto:basing.house@hampshireculturaltrust.org.uk)



[www.hampshireculture.org.uk/basing-house](http://www.hampshireculture.org.uk/basing-house)  
Hampshire Cultural Trust is a registered charity (no. 115653) and company (no. 28166225) in England and Wales.



Again, we have been unable to continue with our usual monthly activities, but we have managed to keep in touch with all our Members by way of our monthly Newsletter which goes out by email, as

well as sharing photos and general chat on our popular WhatsApp group. We have also discovered things we didn't know about our Members; such as who makes the best cakes and biscuits, who has the tidiest garden, who will have so many jars of jam and marmalade that their kitchen cupboard doors won't shut and whose craft ideas are worth copying! For those Members who are not on email, the Committee have continued to make phone calls, or visits from a safe distance to maintain contact. If any Member would like to join the WhatsApp group then please contact our President. All you need is a smartphone.

Our President has nominated our Centenary Tree (which is planted on the Recreation Ground) for a competition called "Tree of the Year" run by the Woodland Trust. We shall have to wait until later in the year to see if it has been shortlisted, and if it has, then we may need to ask the people of Old Basing to go on-line and vote for it!

Meanwhile our Committee has been meeting to ensure that when lockdown easing permits, we will be able to re-start all our meetings and other activities as soon and as safely as possible. We have plenty of ideas which may now be carried forward to next year.

Details of how the WI in Hampshire is dealing with the current situation can be found at [www.hampshirewi.org.uk](http://www.hampshirewi.org.uk) – I will contact Members when we are able to re-start and at that time, we will be able to welcome any new Members who wish to join us.

## CHINEHAM AND OLD BASING NWR

As lockdown eases slightly and we start to venture out once more, our Nationwide organisation continues to connect women who are interested in everything and talk about anything! Thanks to technology we are staying in touch via phone, WhatsApp, emails and Zoom.

Instead of our monthly meetings, lunch clubs and other varied activities we are having a regular weekly **Zoom meeting on Mondays at 2pm** where between six and sixteen get together for exercise sessions, quizzes and generally keeping up with news. Members take turns to set up and run a meeting and, true to form, they have been varied and lively. One week we were sent information on how to make a "no sew" face mask from a T-shirt or a sock and duly wore our efforts for our Zoom meeting causing much merriment. This week was a film-theme quiz which had us scratching our heads hearing the familiar music and trying to bring the name of the film to mind – some of us more successful than others.

Being part of a nationwide organisation has opened up a variety of interesting additional opportunities. NWR Headquarters set up regular quizzes and speakers as well as providing a subscription to Digital Theatre Plus where we can view a variety of performances.

If you would like to Zoom with us while lockdown continues, or want to join us when a more normal service resumes, then information can be found via [www.nwr.org.uk](http://www.nwr.org.uk) or contact **Sandie**, email: [sandra.tapping@gmail.com](mailto:sandra.tapping@gmail.com) or **Karen**, tel. **01256 328488**, who will be delighted to hear from you.



# P.R. BRICKELL

7 Bexmoor Way, Old Basing



**All aspects of  
carpentry work  
undertaken**



FOR FREE ESTIMATES & ADVICE ON  
KITCHEN FITTING, STAIR PARTS RE-  
PLACEMENT, NEW DOORS FITTED, RE-  
PAIRS TO ROTTEN TIMBER AND  
FRAMES, WARDROBE FITTING, AND  
GENERAL MAINTENANCE WORK,  
NO JOB TOO SMALL

PLEASE PHONE  
**PETER ON 01256 355534**

# S. M. DECORATORS

*Interior & Exterior  
Prompt & Efficient Service  
Competitive Prices  
Fully Insured Company  
Over 25 Years Experience  
Skim Plastering and  
Paperhanging Specialists  
City & Guilds Qualified  
All Work Guaranteed  
For Your  
Free Estimate Or Advice  
Please call Steve on  
**01256 811929***

# HORIZON SOUND & VISION

Family Run Business Est 1988

- **Aerial & Dish Installations**  
Freeview, Freesat, Sky & European
- **Freeview, Sky or Freesat on additional TVs**  
Magic Eye control & HD. Phone & Ethernet points.
- **TV Wall Installation**  
Free site survey. System planning. Hidden cabling
- **Tuning & set up of your equipment**  
Cable tidying  
Weak/low signal improvement
- **WiFi Signal Improvement & Network Cabling**

- **CCTV Installations**

- **Audio & Speaker Systems**  
Home, Outdoor & Workplace



**Checkatrade.com**  
Where reputation matters

**01256 841860**

Visit us at Essex Road Basingstoke  
[www.horizonsatellites.co.uk](http://www.horizonsatellites.co.uk) [info@horizonsatellites.co.uk](mailto:info@horizonsatellites.co.uk)



Over 35 years experience in all  
types of domestic, commercial and  
industrial fencing

**FREE** estimates and advice with  
**no obligation** and good quality  
workmanship are **GUARANTEED**

**CALL US 01256 358 940**  
[www.fencing-in-basingstoke.co.uk](http://www.fencing-in-basingstoke.co.uk)

**PC Doctor** (Hampshire) Ltd

**Andy Pearce 01256 841204**



Home & Small Business PC's/printers supplied.  
PC repairs & upgrades, Laptops & Desktops.  
Wireless networking. Virus & Malware removal.  
New PC & Tablet setup.  
Data & Email Transfer from old system.  
[pcdoc.hampshire@btinternet.com](mailto:pcdoc.hampshire@btinternet.com)

## NEWS FROM ODIHAM COTTAGE HOSPITAL



Although the hospital's doors closed to patients and clients in mid March, behind the scenes, staff continue to provide services within COVID-19 guidelines, ensuring the vulnerable within our community remain supported throughout these very difficult times.

Age Concern Hampshire staff have used Odiham Cottage Hospital as a base to support their local day centre clients and the wider community through referrals from Hart DC and Adult Services. They have been keeping in touch through wellbeing phone calls and carrying out shopping trips, pharmacy runs and other essential errands. More recently a "sitting service" has been launched to provide a few hours respite to those families whose loved one lives with dementia and this has proved very popular.

The Odiham Cottage Hospital Befriending Service has continued to support their patients with telephone calls and follow up throughout the pandemic. Whilst face-to-face contact has necessarily been suspended, a long-term relationship between befrienders and patients has been invaluable and a life-line to those who are isolated.

Out in the community, the link nurses Liz Good and Jackie Hordle based at Whitewater Health and all members of the local NHS Rural East Community Nursing Team and St Michael's Hospice Community Palliative Care Team, have worked with increasing demands on their limited resources. Although it is generally recognised that the surge in hospital admissions of patients suffering from COVID-19 was not as great as originally planned for, there remain a high number of patients at home who have needed extra nursing care, some as result of the coronavirus.

We do hope that you and your loved ones have been safe and well throughout the crisis, but if you feel we can help, please do contact me.

We are working towards **reopening** our **shops** in **Odiham, Hartley Wintney and Old Basing in July**, but trading hours may be reduced and there will be new arrangements for donations. Please call your local store to find out more and watch for further announcements.

**Ginny East** (Manager)

Email: [ginnyeast@odihamcottagehospital.org.uk](mailto:ginnyeast@odihamcottagehospital.org.uk) Tel. **01256 393600**

## OLD BASING TENNIS CLUB



It is with much pleasure that we can now say, that following Government guidelines, Old Basing Tennis Club is able to reopen the tennis courts to old and new members for play. You are able to play doubles with people not in your household, so effectively we are back to normal play, which is great.

There are safety instructions on our website showing you how you can play the game safely. We have also introduced a court booking system, so you can always be sure of getting a court when you arrive. The tennis club is 90 years old this year and the lockdown was not how we had anticipated the start to our year of celebrations, but we are delighted to be able to be back outside and hitting some balls in this beautiful weather. Our coach **Ben Jubin**, contact him at [JBTcoaching@gmail.com](mailto:JBTcoaching@gmail.com)

For more information visit [clubspark.lta.org.uk/oldbasingtennisclub](http://clubspark.lta.org.uk/oldbasingtennisclub) or email [obtc.information@gmail.com](mailto:obtc.information@gmail.com) or find us on **Facebook**. The tennis club is on Riley Lane, Old Basing RG24 7DH (opposite The Bolton Arms) with a large car park next to the allotments.



## 24hr Airport Transfers

Professional Door to Door Service

**"Reliable, friendly transport solutions from a local company you can trust"**

**07747 771906**

[www.basingstokeairports.co.uk](http://www.basingstokeairports.co.uk)

Departures



Fabio and Kat have moved to their new Dental Centre

**Call for a free of charge consultation**

- IMPLANTS •DENTURES
- CROWNS & BRIDGES
- HYGIENE •WHITENING

**New patients are welcome**

Implant Dental Centre  
Denture Studio  
and Dental Laboratory



The Loddon Business Centre,  
Unit Q, Roentgen Road, Basingstoke, RG24 8NG  
[www.italdent.co.uk](http://www.italdent.co.uk) tel. 01256 355 268

# Lee Quinlan



## Kitchen

## &

## Bathroom Fitter



**You buy it and I'll fit it!**

"One stop" service for accompanying:  
Plumbing, Tiling, Plastering,  
Flooring & Woodworking

## Electrical Work



**01256 811830**

email: [enquiry@leequinlan.co.uk](mailto:enquiry@leequinlan.co.uk)  
web: [www.leequinlan.co.uk](http://www.leequinlan.co.uk)



# WESTPORT GREY

BUILDING CONTRACTORS

01256 636511

Extensions | Loft Conversions | Renovations | New Builds



[WWW.WESTPORTGREY.CO.UK](http://WWW.WESTPORTGREY.CO.UK)

Westport Grey Ltd. - Registered in England - No. 0216444

BUILDING YOUR DREAMS

## COUNCILLOR DIANE TAYLOR – SECOND YEAR AS MAYOR

My year as Mayor has been an amazing time for both me and my Consort and Chaplain Andy. It has been refreshing to set aside politics for a time (although still serving my ward as councillor) and concentrate on the lovely people of this Borough. It has been a joy to visit people and places, present awards, cut ribbons, attend shows and concerts, give speeches and generally get to know and encourage people who do all sorts of things in our locality – mostly getting on with the job of helping others who are in need.

It is therefore an extra privilege to continue to serve as Mayor for this coming year. After much consideration and discussion with the Deputy Mayor, it was decided that the time simply isn't right for the hand over. So much that makes the mayoralty such a joy and honour would be missed as we continue to handle the current pandemic. I will therefore be the **Mayor of Basingstoke & Deane** until **May 2021** when I sincerely hope we will have put aside the restrictions, difficulties and – for some – heartbreak of the coronavirus emergency and returned to normal life.

With a year's experience under my belt I realise that it is helpful to let more people know about my aims and aspirations and encourage everybody to feel free to ask me to visit – or to visit me in the Parlour. Although this role brings with it many duties and expectations, the aspect that I love most is simply finding out about all the work that people are doing to serve our community and doing all I can to encourage that work and help people of like mind to join together in cooperation to be as effective as possible.

My husband, Dr Andy Taylor, is again my chaplain. He has worked in the church for many years, in recent years as Community Pastor, helping to start up and maintain church-run charities in addition to preaching and teaching.

However, we have many good friends of other faiths (and none) and have enjoyed joining in their celebrations and learning about their traditions – from Ramadan meals to the Hindu celebration of Navrati (complete with dancing!). I hope to continue those friendships across cultures and religions that I have already formed, and make new ones too. Our Borough has become increasingly diverse over recent years, and that has been a good thing. I am a great believer in learning from people who are different from me – embracing their different views and ideals – and hopefully as a result learning to be tolerant and understanding.



So, as Mayor for the coming year I am looking forward to meeting many more Basingstoke people. It will be very different for the time being as we emerge from our period of distancing, but let's find a way to connect, encourage and function again, if not face to face then at least online.

Please contact me either via the Mayor's official route if it is to do with a visit or occasion, or direct to **cllr.diane.taylor@basingstoke.gov.uk**

See you soon!

**Cllr Diane Taylor** (The Mayor of Basingstoke and Deane Borough Council)



Trusted since 1802  
HENDON • HATHAM • HAWLOW • BASINGSTOKE

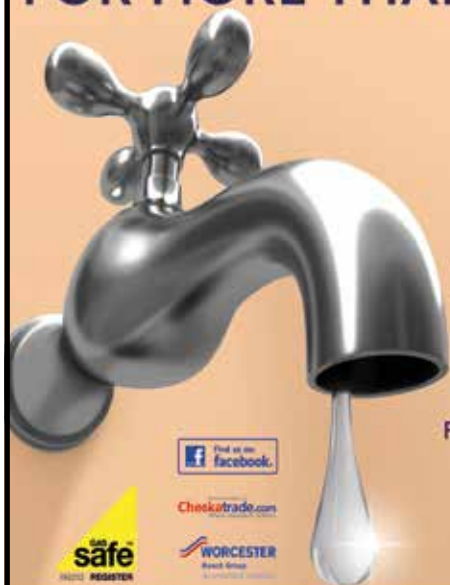


sales • lettings & management • commercial • development • rural

Residential Sales - **01256 840077** Lettings - **01256 337100**

[www.simmonsandsons.com](http://www.simmonsandsons.com) • 12 Wote Street, Basingstoke, Hants RG21 7NW

## FOR MORE THAN JUST A LEAKY TAP



**Niall Catlin**  
**PLUMBING & HEATING**

EST. 1991

Leaky taps to full bathroom installation  
Power flushing | Water softeners | Hot water cylinders

Boiler breakdowns, repair and servicing  
Boiler replacement | All allied trades  
All aspects of plumbing and heating



Checkatrade.com



WORCESTER  
Bosch Group

[www.niallcatlin.co.uk](http://www.niallcatlin.co.uk)

**01256 818086 | 07774 741021**

Serving Basingstoke for over 35 Years



#### Showroom

The old Station Andover Rd  
Oakley Basingstoke RG23 7HA

Tel: (01256) 782070

OPEN 9am - 5pm MONDAY - FRIDAY CLOSED WEDNESDAY

SATURDAY 10am - 4pm

VINYL, WOOD, CARPETS, LAMINATE,  
FURNITURE FOR THE DINING ROOM, LOUNGE, BEDROOM  
AND STUDY

Range of Accessories and  
Hand Made Jewellery.

[www.oakley-furnishing.co.uk](http://www.oakley-furnishing.co.uk)

**CARPET EDGING SERVICE  
ALSO AVAILABLE**

*Rugs Made Your size*

Many Items in stock for Fast Free Delivery



British made Beds Back on Show Free Delivery Approx 1 week

## LODDON

WINDOWS & DOORS

Local Family Run Business Established for over 35 years



GREAT RANGE INCLUDING:

Conservatories | Windows | Aluminium Bi-fold Doors | Composite Doors

- ✓ Quality UPVC Windows and Conservatories
- ✓ Attention to Detail - Local Recommendations
- ✓ Competitive Prices - Free Quotations
- ✓ 10 Year Guarantee - FENSA Registered

Tel: 0118 9815440 | 01256 464304 (evenings) | 07831 200613 (mobile) | [www.loddonwindows.co.uk](http://www.loddonwindows.co.uk)

## OLD BASING SCOUTING GROUP



Old Basing Scout Group has grown over the past few years which is fantastic news – it means that we can give even more young people #SkillsForLife and give them the fun of Scouting. We now have more than 130 young people across **Beavers, Cubs and Scouts** in **Old Basing** with more on the waiting list wanting to join. We aim to provide them with a varied and exciting programme of activities and events that will challenge them, allow them to experience new things, to learn new skills and have fun. To see a young person achieve something they thought was impossible is such a rewarding experience.

With more young people, we're always on the lookout for more adults to help make Scouting happen. Great Scouting can only happen with the great volunteers that we have on board. This includes volunteers who plan our weekly activities, run camps for the young people, keep our tents and equipment in working order, fundraise, sit on our Executive Committee – and many more tasks. As you can see there are lots of things that go in to making Scouting happen and it would be great to have you on board. This could be helping at one of our Section meetings or many other tasks. Giving our young people the #SkillsForLife and chance for adventure can only happen with your help.

There are lots of varied tasks in Scouting and we're always able to tailor these to make best use of your skills, time commitment and interests. If you're able to help in any way at all, we'd love to have a chat. So whether you'd be interested in planning or delivering our weekly sessions, helping with some of the admin such as badge orders, fund-raising for us, supporting us on camps and activities, sitting on our Executive Committee or anything else, please do get in touch. It doesn't matter if you're Basingstoke's version of Bear Grylls and can tie a square lashing whilst blindfolded or if you've had no experience of Scouting before – all that matters is that you're passionate about allowing the Group to deliver #SkillsForLife to as many young people as possible. You can get in touch with us by emailing us at [group@oldbasingscouts.org.uk](mailto:group@oldbasingscouts.org.uk) or you can find us on **Facebook** by searching for **Old Basing Scout Group**.

## OLD BASING ALLOTMENT AND GARDEN SOCIETY (OBAGS)

At the time of writing, there are no plans as yet to reopen the shop or toilet but now lockdown is beginning to ease, that situation will hopefully change soon so please keep an eye on the [www.obags.uk](http://www.obags.uk) home page. The second allotment inspections of the year should have taken place already but if you have had trouble managing your plot due to COVID-19, please drop a message to the Parish council to let them know. All in all, the plots never seem to have looked as good as they do this year. It has been unusually dry so far though so keep on top of watering and install extra water butts, just in case we do get some rain to fill them! You should be starting to reap the rewards of hard work earlier in the year and be able to harvest some early potatoes, tomatoes and strawberries. Rhubarb should only be pulled for a couple more weeks to let the crown recover as autumn comes. Keep hoeing weeds whenever you get a spare moment. Keep an eye out for caterpillars, aphids and pea moths. Treat as necessary. Be watchful for blight and remove and burn affected plants. Do not add them to your compost heap as you will reinfect your plot next year. If you have any good recipes or photos of your plot or garden, please feel free to add share them to our Facebook page: [www.facebook.com/oldbasingallotments](https://www.facebook.com/oldbasingallotments)

Tracy Braybrook



## NATURE NOTES FOR JULY

I do hope that many of you were able to access the on-line version only of the May and June editions of the Basinga as I'd managed to acquire some great photographs and it would be a shame indeed if they had not been viewed by the number of people they deserved. It could be they are still there now though so take a peek.

At the risk of repeating myself, the past three months have been truly special for wildlife and even more important, our ability to see, hear and perhaps touch it. The natural world is still the most precious (free) thing we have in our lives and we must absolutely seize every chance we get to enjoy it. The fabulous weather has encouraged all manner of birds, insects, mammals and plants to show themselves at their very best to us and I know many of you have been enthralled by noisy dawn choruses, hedgehogs grubbing through gardens come nightfall, wild flowers parading in fields or on verges and seeing gardens looking pristine. The warm days and night s have also meant a bumper breeding season for birds such as Blue and Great tits and I'd be surprised if any of you haven't heard the delightful little contact calls in the trees of young families of the said birds.

Please don't keep any photographs of whatever you might have taken to yourselves, do share them with me so that I can pass on to Basinga Extra. Jim Andrews did exactly that when he was called to the Owens' family home in Linden Avenue to check on a Cuckoo that had apparently crashed into a window. The bird, a female, did thankfully recover and flew off after a while but not before some unusual photos were taken. It's been a good year for Cuckoos by all accounts and nice to see one close-up even if due to an unfortunate accident.



The quiet roads encouraged my good lady and me to dust off our bikes which enabled us to hear Reed, Garden and Cettis Warblers, Whitethroats, Blackcaps and Skylarks along the lanes, all of which would have been missed in a car. A slow-worm crossed our path in the churchyard as we walked through, the first I've seen in years and then lo, one turned up in my own back garden the following day!

Roger Rummey, out for a walk off Pyotts Hill toward the incinerator jumped a bit when a five-foot long grass snake slithered across the track. That's about as big as they get so one can excuse Roger for his momentary shock.

Christine Stuart (Lambs Row) was thrilled to find an Elephant Hawkmoth in her garden on the 5th June and if you've not seen one of these huge beasts, do look them up and it'll make you want to find one for real. Privet Hawks, similarly beautiful, should be around now so I don't expect Christine's call to be the last.



The aforementioned Jim Andrews sent me several great pictures again including this Marsh Fritillary butterfly, which is a rare specimen throughout the UK, but he captured it on the Millfield and has also noted one in Basing woods.

Phil Males is a regular contributor to this page, often about early and copious amounts of frogs and spawn in his garden pond. Not so this year though, no frogs just hundreds of newts, which is probably just as good to see. He also witnessed a mating queen bee, newly emerged and keen to begin her own colony. Unlike many wild creatures where this process is fleeting, Phil said he was impressed by the insects staying power! Oooh.

Don't forget to send all your **nature-related photos** to [rickbourne@yahoo.com](mailto:rickbourne@yahoo.com) or [naturenotes@basinga.org.uk](mailto:naturenotes@basinga.org.uk) or ring **01256 321108** for news.

For all your bird food requirements, order it from me at **'Bird Drop-ins'** use the former email address or ring me on **07900 648675** to place an order or get a form.

**Rick Bourne**

## **JULY IN YOUR GARDEN**

June has been "flaming" and hopefully by the time you are reading this the warm/hot weather has continued. If so, being water wise will be the order of the month. Using water butts, trying to only water pots and new plants if dry and keeping bird baths and ponds clean and topped up should all be priorities.

Unless in drought, lawns should be mown regularly. Setting the blades slightly higher can protect the grass in very hot weather, but any brown patches will soon recover once autumn rains return. Try to only use a sprinkler if absolutely necessary. Ants and weeds will probably be your biggest problems right now, so brush off the former and spot treat or dig out the latter. The growing rate of the grass will slow towards the end of summer so setting a higher blade height then will make the grass more resistant to wear.

Summer baskets can be kept looking at their best if they are cut back and then fed. This can encourage new growth and revive their display. Deadhead flower borders and cut back hardy geraniums and delphiniums after the first flush of flowers to encourage more blooms.

You can propagate your own flowers by starting to collect seed heads and by taking cuttings of container and patio plants. Feeding and mulching borders will really help encourage a good display as well as retaining moisture, reducing the need to water and will also suppress weeds. It is probably the best thing you can do for your garden right now. The best mulches are 5 to 7cm thick and are rich in organic matter.

Evergreen hedges such as *Lonicera nitida*, Box and Privet can be clipped this month and the clippings added to the compost heap if they aren't too woody. Once Clematis Montana has finished flowering, it can be cut back – hard if necessary. Honeysuckle and climbing roses will need tying in to their supports, the latter need to be tied as horizontal as possible to ensure the best showing of flowers. If you need to propagate any shrubs, now is the time to take softwood cuttings of plants such as lavender, rosemary, hydrangea and philadelphus.

June-flowering shrubs such as philadelphus can be pruned now and while you are at it, take some semi-ripe cuttings to create new plants. Hydrangea and Choisya can also be propagated from cuttings that are placed in pots of gritty compost and placed into a cold frame. Remove suckers from rose bushes and trees and tie in climbers and ramblers as they grow.

House plants can benefit by being placed outside for the warmer months and plants in the greenhouse will need shading to protect them from scorching under glass. Keep an eye out for red spider mite, white fly, mealy bugs and scale insects and treat appropriately.

Finally keep on top of fallen leaves and flowers to help prevent some pest and disease problems. Above all, be sure to take some time off from weeding and watering to relax and enjoy the rewards of your labour.



## MOIST AND SOFT CARROT CAKE

<b>PREP TIME</b>	15 minutes
<b>COOK TIME</b>	50 minutes
<b>TOTAL TIME</b>	1 hour 5 minutes
<b>SERVINGS</b>	8 Portions
<b>CALORIES</b>	305 kcal

### INGREDIENTS

1.5 Cup All Purpose Flour/ Maida  
1.5 Cup Carrot Grated  
3 Eggs Medium Size  
4 Tablespoon Raisins  
2/3 Cup Sugar  
1 Teaspoon Baking Soda  
1 Teaspoon Baking Powder  
1/2 Teaspoon Salt  
1/2 Cup Oil  
1 Teaspoon Vanilla Essence  
1/2 Teaspoon Cinnamon Powder  
1/2 Teaspoon Nutmeg Powder  
1 Small Tub Vanilla Cake Frosting

### INSTRUCTIONS

First of all, preheat the oven on 180 degree temperature for 10 minutes. Grease the baking tin with little oil and keep aside. Add 1 teaspoon of flour to chopped walnuts and raisins and mix well. Keep them aside too. Now, sieve together flour, baking soda, baking powder and salt twice in a sift and keep aside. In a mixing bowl, add eggs and sugar and beat them together on high speed for 5 minutes till the mixture is good frothy. Add nutmeg powder, cinnamon powder, vanilla essence and oil to it and mix well with the help of a spatula. Add flour mixture to it in fractions and mix it properly without making any lumps. Add grated carrots, chopped walnuts and raisins to it and mix well again. Pour the mixture in the baking tin and tap the tin 2 to 3 times. Place the tin in the oven and bake the cake for 45 to 50 minutes. After 45 minutes, check by inserting a tooth pick or knife in the middle. if it comes out clean your cake is baked, otherwise keep it for few more minutes. Take the tin out, cool it for sometime and then take the cake out from tin. Let it cool completely.

For icing of this cake, I have used market bought ready-made icing. Cut the cake from the middle and spread the icing all over on one part. Place another part on top of it and spread the icing again evenly on this part too. Garnish with some chopped walnuts and enjoy.

You can skip the icing part and can relish the carrot cake without it too. Adjust the amount of sugar according to your taste. I have used castor sugar in this recipe, hence given the quantity for same. You can store this cake in an airtight container and enjoy for 2 to 3 days.

*\* The recipe comes from **Meenu**, a local resident whose Blog [www.yourfoodfantasy.com](http://www.yourfoodfantasy.com) contains further recipes.*

- Loft ladders & loft hatches
- Boarding, Lighting & Insulation



## CREATING SPACE THE EASY WAY!

### MAJOR BENEFITS

- De-clutter your home
- Create up to a third more space
- Gain safe & easy loft access
- No mess, no fuss, no subcontractors

Call now to book a FREE survey & quotation

**01256 688648**



[WWW.ACCESS4LOFTS.CO.UK](http://WWW.ACCESS4LOFTS.CO.UK)



## TRILBYS

BARBERSHOP & HAIRDRESSERS  
EST 1991

**Now open in Belle Vue Rd  
Old Basing.**  
**Hairdressing for the whole  
family.**  
**01256 357333**



## BLUE WILLOW COACHING

Career and Life Coaching

- Do you feel stuck in your professional life and need support to work out - what's the right way to go?
- Do you want to learn how to challenge your "inner critic" and build your emotional resilience?
- Do you want to increase your confidence and presence?
- Do you want to get in touch with who you are and what you truly want to do?

Siobhain Whitty is a professionally trained executive and life Coach, certified with the International Coach Federation and Academy of Executive Coaching.

Book a **FREE 30 minute, no obligation sample session**

Contact Siobhain at:

[info@bluewillowcoaching.co.uk](mailto:info@bluewillowcoaching.co.uk)

[www.bluewillowcoaching.co.uk](http://www.bluewillowcoaching.co.uk)

07894 209 698

*Conversations with  
a purpose*

## M.C.PEGG

**Plumbing, Heating & Gas Services**

**Local & Reliable**

**All Plumbing and Heating Installations**  
**Gas Safe Registered - 195010**

**Bathroom Suites/Showers**  
**Gas Safety Certificates**  
**Boilers, Hot Water Tanks,**  
**Heating systems,**  
**Servicing**

**FREE ESTIMATES**



**Tel: 01256 308462**

**Mob: 07973 217020**

**Email: [matthew.pegg1@btinternet.com](mailto:matthew.pegg1@btinternet.com)**

## Spencer & Peyton Ltd

*Established 1961*

3rd Generation  
family owned  
and run Funeral  
Directors and  
Monumental  
Masons

**24 Hours**

**Our family  
serving your family  
for over 55 years**

**380 Worting Road  
Basingstoke, RG22 5DZ  
01256 323165**

*(Flower Girl Florist on site)*

**7 London Road  
Hook, RG27 9DY  
01256 761717**

**Trading Standards approved**

**Pre-paid funeral plans  
discussed without obligation**

**[spencerandpeyton@btconnect.com](mailto:spencerandpeyton@btconnect.com)**

**[www.spencerandpeyton.co.uk](http://www.spencerandpeyton.co.uk)**



**10**  
YEAR  
GUARANTEE



**NJP Heating Services**

**0% finance**

on all Worcester Bosch boilers

complete with up to 10 year guarantees on all  
Worcester Bosch boilers and controls

Contact us today for your free quote

**07717 741999 or  
01256 782202**

nick@njpheating.com | njpheating.com



## Basing Pedicare

Fully qualified mobile Foot Health Practitioner

- Toe Nail Cutting
- Corn And Callus Management
- Diabetic Foot Management
- Verruca Care



Contact

Malinda Snook MCHP MAHP  
to make your appointment-  
I visit you in your home!

**07751 474322**



**Prime  
Improvements**  
*Home & Garden*

**07841 532 878**

Painting & Decorating  
Handyman Jobs  
Tiling  
Flooring

Grass & Hedge cutting  
Garden Clearance  
Fencing & Decking  
Sheds & Cabins

[www.primeimprovements.co.uk](http://www.primeimprovements.co.uk)

## The Complete Tree Service

- Residential & commercial work
- Tree removal, thinning & lifting
- Stump removal, scrub clearance & hedge trimming

Over 25 years experience -  
fully trained, insured & certified.  
We guarantee we can help.  
Call for professional, friendly advice.



Teams all over Hampshire, Surrey,  
Sussex and the South:

**01256 763 162**

[www.cedardale.co.uk](http://www.cedardale.co.uk)

**Checkatrade.com**  
Where reputation matters





High quality and friendly MSK,  
Back Pain and Neck Pain service  
with professionals who listen

**Annette and Gordon Linscott**

35 Years in Basingstoke  
Now on your doorstep

East Barn, Lychpit Centre  
01256 466 666

[www.spineteam.co.uk](http://www.spineteam.co.uk)



**THERMOFLUX**  
PLUMBING AND HEATING SERVICES

Fully insured | Over 16 years experience |  
Free no obligation quotations

Boiler and heating system installation specialist

General plumbing

Bathroom installations

Water softener installations

Power flushing

Un-vented hot water systems



T: 07891 226591 | E: [Thermofluxplumbing@outlook.com](mailto:Thermofluxplumbing@outlook.com)

 **TWO GUYS**  
KITCHENS / BATHROOMS / APPLIANCES



SERVING THE PEOPLE OF BASINGSTOKE & NORTH HAMPSHIRE SINCE 1968

**FINANCE  
NOW  
AVAILABLE**

Please ask  
for details

**DESIGN,  
SALES & FULL  
INSTALLATION  
SERVICE**

01256 363123 | [twoguys.co.uk](http://twoguys.co.uk)

ARMSTRONG ROAD, DANESHILL EAST, BASINGSTOKE, HAMPSHIRE RG24 8NU



## ● BASINGA

**EDITOR:** Colin Follett, 101 The Street, Old Basing, RG24 7DA 01256 326909

**ADVERTISING:** Email: [advertising@basinga.org.uk](mailto:advertising@basinga.org.uk)

**SECRETARY:** Graham Merry, 40 Linden Avenue, Old Basing, RG24 7HS 01256 463908

**TREASURER:** Andy Groves, 30 Pyotts Copse, Old Basing, RG24 8WE 07918 644187

### **DISTRIBUTION:**

**Old Basing Area:** Peter Watson, 19 Priory Gardens, Old Basing, RG24 7DS 01256 352299

**Lychpit Area:** Andree McLean, 6 Pimpernel Way, Lychpit, RG24 8SS 01256 819006

**WEBMASTER:** Brian Baker; email: [webtech@basinga.org.uk](mailto:webtech@basinga.org.uk) 07955 743579

## ● OLD BASING & LYCHPIT PARISH COUNCIL

**CLERK:** Sandra Tuck 01256 462847

**OFFICE AND HOURS:** The Pavilion, The Recreation Ground

Monday to Thursday 10.00am to noon

## ● CHURCH INFORMATION FOR THE AREA

### **Church of England (Parish of Old Basing & Lychpit)**

**VICAR:** Revd. Heather Leppard, The Vicarage, Church Lane, Old Basing 01256 363612

Email: [vicar@stmarysoldbasing.org.uk](mailto:vicar@stmarysoldbasing.org.uk) 07745 731729

**ADMINISTRATOR:** Debbie Filer 07541 698235

**CHURCHWARDENS:** Tricia Renwick 01256 326155

Ian Kershaw 01256 355500

### **Regular Services at St Mary's Church, Old Basing**

**SUNDAY:** 8am Holy Communion; 9.30am Sung Eucharist and Junior Church;  
5.30pm Evening Service

**OTHER DAYS:** Wednesday 10am Holy Communion

*Changes to the regular service pattern and other weekday services are shown  
in the weekly news-sheet, a copy of which is displayed on the noticeboard in  
the church porch*

### **Old Basing Methodist Church**

**MINISTER:** Revd. David Jenkins 01183271592

07973195566

**SUNDAY SERVICE:** 10.30am Morning Service

### **Roman Catholic**

**PRIEST:** Fr Christopher Rutledge 01256 465214

St Bede's Church, Popley Way, Basingstoke

**SUNDAY MASSES:** 9am, 11am and 6.30pm



need a **painter** and **decorator**?



- professional
- friendly
- affordable
- experienced
- reliable
- fully insured

pscdecoratingservices

call us today for a free no obligation quote  
**01256 334852 07919 358050**  
pscdecoratingservices@gmail.com

## Infinite Harmony Hatha Yoga

4 classes to choose from:

### Gentle Chair Yoga

If you have mobility/injury concerns then this is the class for you. All yoga is done on a chair and using props.

Monday's

14.00 - 15.00

Lychpit  
Community Hall

### Relax Yoga

This class is for all levels of ability and uses postures to help you relax and deepen your yoga practice.

Tuesday's

19.15 - 20.15

St Mary's  
Church Hall,  
Old Basing

### Sunday Morning Yoga

This class is for all levels of ability and focuses on strength and flexibility.

Sunday's

09.15 - 10.15

Lychpit  
Community Hall

### Sunday Night Satsang

This is deep relaxation yoga. You will be led through a series of gentle yoga postures followed by an extended guided meditation.

1st Sunday

of the month

18.30 - 19.30

Lychpit  
Community Hall



Contact Vicky on 01256 910108 or  
email vicky@infiniteharmony.co.uk  
Don't forget to book your space.



For more information visit [www.infiniteharmony.co.uk](http://www.infiniteharmony.co.uk)



## Tree Surgeon

01256 763859

07766 256788

TreeSceneArb@gmail.com



TREE SCENE  
ARBORICULTURE

Adrian Stanley

BSc(Hon) AA Tech Cert

Qualified & experienced  
arborist

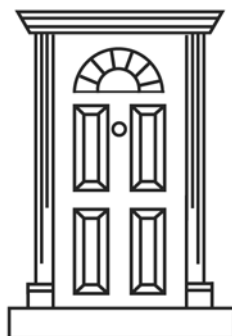
- All aspects of tree work & stump grinding
- Fully insured (£5m) - free estimates
- Logs supplied

## Basing Electrical Ltd

For all your electrical needs.  
Both in and outside your home.

Part P Approved NIC EIC Registered.

Call John on 07793748360



## DAVID MATTHEWS

Carpentry & Joinery Services

Chineham, Basingstoke. Tel: 01256 476207

- ❖ Doors ❖ Wardrobes ❖ Kitchen Design Service
- ❖ Custom Made Units



# Outdoor Fitness is HEALTHIER

The Beechdown Club has invested heavily to provide unrivalled outdoor fitness facilities:

- 📍 Floodlit Open-Air Gym
- 📍 Floodlit Running Track
- 📍 Floodlit Workout Hubs
- 📍 Floodlit Boot Camp Court
- 📍 Floodlit Football Pitch
- 📍 Floodlit Tennis Courts

But if the British weather deters you from enjoying the Outdoors, then come inside and indulge in the most extensive array of fitness and relaxation in the area. All air-conditioned, all Covid-safe and all respecting social distancing with sanitisation stations and regular cleaning.



*Reopening early July. We look forward to welcoming existing members to all the new facilities. Limited numbers. Waiting list open.*



Visit our website  
**beechdown.co.uk**

Call us on  
**01256 36 22 22**

Find us at  
**Winchester Rd  
RG22 4ES**