

June 2018

BASINGA



Anna Fairs



Old Basing and Lychpit Parish Magazine
www.basinga.org.uk

Summer Parties

AT BEECHDOWN

Birthday?
Retirement?
Graduation?

Why not celebrate in
style this Summer at
Beechdown

BBQ's from £10.95pp

Hog Roast £995, incl. room hire

Contact the events team for details & availability:
eventsoffice@beechdown.co.uk 01256 362211



JUNE 2018 – NOTES AND NEWS

The cover photograph this month is “Barton’s Mill” by Anna Fairs. As well as having the longest day, 21st, this is also the month of “Wrong Trousers Day” on June 29th. Inspired by the Oscar-winning characters Wallace and Gromit, the day is all about paying £1 to wear the wrong trousers to help improve the quality of life for children in hospitals and hospices around the UK.

BASINGA ARTICLES

We welcome both regular and occasional items for the Basinga. The very last date for copy to the **Editor** for the **July edition** is **6 pm on Sunday, 10 June..** Please use the forms on **www.basinga.org.uk** to get your dates, articles and letters to us (see below). All advertising enquiries – classified, free adverts or inserts (flyers) can also be made via the Basinga website. Don’t forget that we only accept articles with 300 words maximum.

BASINGA AND THE GDPR

The General Data Protection Regulation, which came into force at the end of May, ensures that data protection laws are common throughout the EU, even though the UK is in the act of leaving. Personal data is that which can be used to wholly or partly to identify an individual, like an e-mail address, phone number, photograph or a name. Any organisation which uses and stores personal information, and Basinga does this when accepting e-mailed ‘copy’ and enquiries, must ensure the security and integrity of its stored data.

Our secure website forms have been available for some time and are our preferred means of receiving information. The submission forms can be found at **www.basinga.org.uk** in the drop-down menus on the main page labelled **CONTRIBUTOR SUBMISSIONS**. Diary dates can be passed to us and articles / letters attached in the same way as using an e-mail. From the same menu bar you can submit Free Ads, Concession Ads (What’s On) and make enquiries about paid-for advertising. We also need to draw your attention to our Privacy Policy, this and any other changes will be displayed on the website.

We are more than happy if you want to try out the website forms to get used to them, just put “Test Message” in the name field and complete your email address, you will then get a conformation of receipt.

Using the website as a means of contacting us ensures that contributions and enquiries are directed to the most appropriate of our volunteers, cuts down on our time and provides us with a more efficient system.

SITUATIONS VACANT

The Basinga Team are looking to recruit an **Assistant Advertising Manager** to learn what is involved in this part of our activity and to lend support to the advertising manager when necessary. For more information contact the Editor at **editor@basinga.org.uk**

We would also like to recruit a **Website Technician** to help administer Basinga Extra. This would be a great opportunity for a retired programmer or an older student who would like some experience in helping to maintain a dynamic website that is increasingly important in the monthly composition of this magazine, Please contact **webman@basinga.org.uk** for more information.

OLD BASING VILLAGE NURSERY SCHOOL

There is change in the air at Old Basing Village hall with a brand new nursery school in the process of registering with Ofsted. After over 30 years of nurturing children within her popular and highly regarded pre-school setting, Di Bishop has taken the difficult decision to retire at the end of the summer term. Di, and all those who have worked in the setting over the years, have shown dedication towards the village's preschoolers; there must be hundreds of people out there who, all grown up now, have greatly benefited from the care taken of them during those very precious early years and many will have fond memories of Old Basing Pre-School to look back on.

Local mum of three and primary school teacher, Victoria Grayson, is stepping into the breach and opening the new, teacher led, 'Old Basing Village Nursery School' at the village hall. This was an opportunity too good to pass up on for Victoria who believes in a child-initiated, creative approach to Early Years learning. Armed with a new logo (designed by local graphic designer Tina Kean at 'Kean to Design') and her new passionate and dedicated team of early years practitioners, Victoria is looking forward to meeting with parents and sharing her vision with them. Details of open sessions to follow.

We would like to say a very big thank you to Di and her team for their hard work and commitment over the years and we are sure she will enjoy the peace and quiet to come.

If you are interested in your child attending **Old Basing Village Nursery** school, then contact **Victoria** on **07557642510**, email **oldbasingvillagenursery@gmail.com** or visit their website **oldbasingvillagenursery.com** for more information.

Alison Attenborough

OLD BASING INFANT SCHOOL

At Old Basing Infant School we have a Fairtrade group. The group is made up of a girl and boy representative from each class. We have meetings together to talk about why Fairtrade is so important and what we can do to help. Fairtrade is important because it means the farmers get a fair price for their food or products. If the farmers do not get a fair price for their products they can't afford to buy enough food or medicines for their family. We don't think this is fair and it does not respect the farmer's rights. So we have been working hard as a school to raise awareness of Fairtrade and learn all about it. We have learnt all about the different Fairtrade products that are available and discovered there are lots more than just Fairtrade bananas and chocolate! We are currently learning all about Fairtrade cotton and the journey cotton takes from where it is grown to ending up as clothes in our shops. As a school we try to use Fairtrade products where we can, such as during our cooking sessions, the Year 2 children recently made banana bread using Fairtrade bananas.

We would like to take this opportunity to ask you to help us support Fairtrade. If you are able to, please look out for and buy Fairtrade products when you are shopping. You could also learn more about how important Fairtrade is and the difference it can make to farmers lives across the world.

The Fairtrade Group
Old Basing Infant School

DO YOU HAVE A WILL IN PLACE?



Clarke & Son Solicitors LLP
Manor House 8 Winchester Road Basingstoke Hampshire RG21 8UG

CLARKE
& SON
SOLICITORS

A Will is quite possibly one of the most important documents you will ever sign.

Call now to book a free Will healthcheck or to start the process of making your Will.

T: 01256 320555

www.clarkeandson.co.uk

M MARTIN
MATTHEWSON

Call Us:

01256 364753

ALL MAKES SERVICING & REPAIRS
THE VOLVO & NISSAN SPECIALISTS



TERRA CLEAN



Find Out More: www.garagebasingstoke.co.uk

FREE Local Collection & Delivery TAC's Apply



Unit 1 Pensdell Farm, Farleigh Road, Cliddesden, Basingstoke, Hants, RG25 8A

OVENCLEAN
The original oven cleaning specialists

Non-Caustic Fresh Solution Used Every Time

Ovens ~ Hobs ~ Extractors

Microwaves ~ Aga's ~ Ranges Cleaned

FOR A FREE NO OBLIGATION
QUOTE PLEASE CALL

01276 473118 - 07882 886736

www.ovenclean.com

20% off all products
offer exclusively for
Basinga readers.

(With this advert. New orders only)

Visit Basingstoke's **most recommended** bathroom
& kitchen supplier and installer... **Checkatrade.com**

A1 
Bathrooms
& Kitchens

- Fully employed fitters
- 24/7 Emergency callout
- Project managed installation
- Comprehensive insurance
- 4 year labour guarantee
- Open Sundays 10am - 2pm



Images courtesy of A1 Bathrooms & Kitchens customers

Checkatrade.com

Ask to speak to any of our customers!

Your Dream, Our Creation : www.a1bathrooms.co.uk

SHOWROOM Unit 3, Cartel Business Centre, Stroudley Road, Basingstoke, Hants RG24 8FW. T: 01256 810460

Thinking About Security? - Call your local NSI approved experts



*Affordable security for
your home or business!*

Celebrating 30 years
in 2014!

**ALL WORK PROFESSIONALLY INSTALLED BY OUR OWN
EXPERIENCED ENGINEERS TO THE HIGHEST STANDARDS.**

- ⇒ PD6662:2010 & EN50131 High Quality Intruder Alarms.
- ⇒ Fully wireless, hybrid or concealed wired systems.
- ⇒ All types of audible and monitored alarms.
- ⇒ **Competitive upgrades** on any type of systems.
- ⇒ Servicing, Maintenance and Repairs.
- ⇒ Closed Circuit TV & Access Control.
- ⇒ Safes & Security Lighting.
- ⇒ 24 hour emergency cover on Intruder Systems.
- ⇒ Up to five year warranty on Intruder Systems.

GENUINELY LOCAL FAMILY RUN BUSINESS. EST 1984

FOR MORE INFORMATION OR TO ARRANGE A
PROFESSIONAL, FREE OF CHARGE, NO
OBLIGATION RISK ASSESSMENT AND SURVEY,
PLEASE CALL US ON

01256 477472



QUALITY ASSURED
INTRUDER ALARMS
CCTV
ACCESS CONTROL
SYSTEMS

No monthly rental!
You own the system!
Don't impulse buy,
call us for a chat
first!

10% discount on all new
systems or upgrades for
residents of Old Basing
& Lychpit.
(Excluding special offers)

UNIT E9 GRAFTON WAY, BASINGSTOKE, RG22 6HY - www.careguard.co.uk



**CONTACT BASINGSTOKE
01256 325575 ANYTIME**

**ARE YOU A WORKING WIFE?
AND TIRED OF COPING WITH THE HOUSEWORK?**

WE PROVIDE

REGULAR/HOUSE MOVE/END OF TENANCY CLEANS
IRONING, OVENS AND CARPET CLEANING
OVER 25 YEARS IN BASINGSTOKE



RING US TODAY FOR A FREE BROCHURE
01256 325575



CHEQUERS

Independent Estate Agents



An estate agent one step ahead of the rest...

Thinking of Selling?

If you are considering a move,
we currently have buyers looking for
property in the Old Basing/Lychpit area.

**For a free valuation contact
Steve Halstead
01256 810018**

www.chequersestateagents.co.uk

1 Winton Square, Basingstoke, Hampshire RG21 8EN

T 01256 810018 F 01256 473393 E sales@chequersestateagents.co.uk

If you have instructed another agent on a sole agency and/or sole selling rights basis, the terms of those instructions must be considered to avoid a possible liability to pay two commissions. This advert must be produced at the time of instruction and cannot be used in conjunction with any other offer. Maximum fee applies.

PARISH COUNCIL NEWS

OLD BASING & LYCHPIT NEIGHBOURHOOD PLAN

The Neighbourhood Plan Referendum will be on June 7th. The Examiner's comments have been added to the Neighbourhood Plan and Basingstoke & Deane has agreed the Plan should proceed to Referendum. The Plan is now fixed and you can see the Referendum version on the parish website, Basinga Extra, or at the Basingstoke & Deane offices, the Parish Office, Basingstoke Discovery Centre, Chineham Library and Old Basing Health Centre. Vote!

ANNUAL PARISH AWARD

The recipient for 2018 is Kath Davies for over 40 years of voluntary work with organisations such as the local Junior Red Cross group which she helped set up and led in the 1970's, setting up the local D of E Award group, serving on the Carnival and Beddington Centre Committees and carrying out house to house collections for various charities. The award was presented at the Annual Parish Meeting on 15 May.

OLD BASING CARNIVAL – 16 th JUNE

Please come along to support the carnival - hopefully the weather will be as sunny as last year. However, do remember that dogs (with the exception of assistance dogs) are NOT permitted on the recreation ground so please leave them at home.

VOLUNTEER READER REQUIRED

Would anyone be prepared to read and record the twice-yearly Community Newsletter to enable us to provide an audible copy to any residents with impaired vision? Recording equipment will be provided and this could be done in your own time in your own home or, if preferred, in the meeting room above the Parish Office.

See page 10 for Summer Security Advice

PARISH COUNCIL MEETINGS

The next two meeting dates are **Tuesday, 5th June** and **3rd July at 7.30 pm** at the **Pavilion**. All are welcome and if you have impaired mobility contact the Parish Office in advance.

PARISH COUNCIL

Chairman: **Cllr. Mark Oszczyk** (contact via Parish Office)

Parish Clerk: **Mrs Sandra Tuck** Deputy Clerk: **Mrs Heather Mountford**

Address: **The Pavilion, The Recreation Ground, The Street, Old Basing, RG24 7DA.**

Telephone: **01256 462847**

Office Opening Hours: **Mon – Thurs 10.00am to noon)**

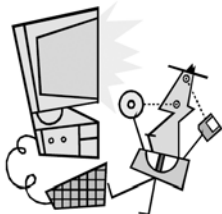
Email address **clerk@oldbasing.gov.uk**. Web: **www.oldbasing.gov.uk**

OLD BASING & LYCHPIT GOOD NEIGHBOURS

HELP we are in desperate need for **volunteer drivers** to help with local runs in and around Old Basing and Lychpit for our service users. If you feel you can spare an hour or so every now and then I would love to hear from you, call **01256 328196**

We are going to be at the Basing Carnival so if you would like a chat about what we do then come and see us.

Sue Wilson Chairman



PC-fix-IT

Tel: 01256 474997
or 07909 681606
www.pcfixit.co.uk

Repairs, Upgrades, Virus removal,
Broadband, Internet, Wireless, etc.

Reliable, experienced service.



LAWRENCE NARDI

ARCHITECT

All planning & Building Regulations
applications

Fully qualified with over 40 years
experience

Based in Old Basing – Free preliminary
consultation

Tel: 01256 819666 & 07870 443812



The Water Softener Specialists



- Manufacturing water softeners for over 30 years
- Latest non-electric block salt water softeners
- New installations & repairs
- Advanced technology water filters for pure drinking water
- No call-out charge
- Based in Hook

**Fitted, fully reconditioned water softeners
from just £395 (includes warranty).**

**Tele: 01256 768171
Mobile: 07836 247694
www.amsmayfair.co.uk**

HORIZON

Sound & Vision
SATELLITE & AERIALS
Family Run Business Est 1988

- **Aerial & Dish Installations**
Freeview, Sky, European & Freesat Installations. Your only local Sky authorised dealer. We can offer the same deals as Sky
- **Freeview, Sky or Freesat on additional TVs**
Magic Eye control & HD on multiple TVs. Phone & Ethernet points.
- **TV Wall Installation**
Free site survey. System planning. Hidden cabling
- **Tuning & set up of your equipment**
*Advice for Digital, Audio & Smart Equipment. Cable tidying
Weak/low signal improvement*
- **WiFi Signal Improvement**
- **CCTV Installations**
- **Sonos Sound Systems**



sky | Your local
Sky expert

Checkatrade.com
Where reputation matters

01256 841860

Visit us at Essex Road Basingstoke
www.horizonsatellites.co.uk info@horizonsatellites.co.uk

W.T.HILL Painter & Decorator

Internal & External
Domestic & Commercial
Over 30 Years Experience
Tel: 07748808069/01256 467901
Free Quotations



Over 35 years experience in all
types of domestic, commercial and
industrial fencing

FREE estimates and advice with
no obligation and good quality
workmanship are **GUARANTEED**

CALL US 01256 358 940
www.fencing-in-basingstoke.co.uk

GARDEN SOLUTIONS

NEIL INKLEY

SPECIALIST IN FENCING, TURFING,
PATIOS ALSO GENERAL GARDEN WORK
including Lawns, Hedges, Clearance,
and Pressure Cleaning

Local References Free Estimates
01256 882108 or 07768 105488



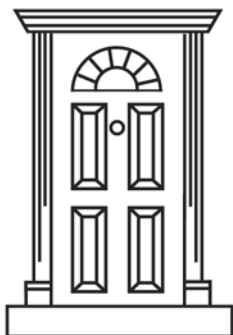
Tidy Time Services

TIDY TIME SERVICES

RELIABLE DOMESTIC CLEANING & HOUSEKEEPING SERVICES

For quotes please phone
Lucy on 07768639762

www.tidytimeservices.com



DAVID MATTHEWS

Carpentry & Joinery Services

Chineham, Basingstoke. Tel: 01256 476207

❖ Doors ❖ Wardrobes ❖ Kitchen Design Service
❖ Custom Made Units

JAYDAN

ELECTRICAL LTD

For all your domestic and commercial
electrical installation needs

Call us for:

Lighting, sockets and fuse boards.
Electrical wiring for extensions,
refurbishments and new builds.

Help with fault finding,
electrical maintenance, testing
and certification.



Free quotation - 24 hour call out

07714 795507 or 07917 596164
jamie@jaydanelectrical.com
www.jaydanelectrical.com

CLARK FINANCIAL LTD

INDEPENDENT FINANCIAL ADVISERS

Mortgages and Re-mortgages

Savings & Investments

Life & Critical Illness Cover

Pensions

Income Protection

Private Medical Insurance



For your financial needs contact

Neil on:

01256 329547 or 07778 007492

E-mail: neil@octavianpartnership.com

Musket Copse, Old Basing.

Clark Financial Ltd is an appointed representative
of Lighthouse Advisory Services Ltd

A FEW TIPS ON SUMMER HOME SECURITY

A few tips on Summer Safety from the North Hampshire Community Safety Team, forwarded by the Parish Council. When the summer weather arrives, people tend to be more relaxed about leaving windows and doors open! Here are a few tips to keep your home safe from burglary and other crime:

- Lock doors and windows when leaving the house, even if you're just in the garden.
- Hide all keys, including car keys, out of sight and away from the letterbox.
- Install a visual burglar alarm and good outside lighting.
- Get a trusted neighbour to keep an eye on your property if you are away and fit a timer to radios or lights to make the property appear occupied.
- Ensure fences around your garden are in good condition and side gates are locked.
- Secure bikes by locking them to an immovable object inside a locked shed or garage.
- Don't store ladders or tools outside where they could be used to break into your home.
- Improve natural surveillance at the front of your property i.e. trim high hedges.
- Mark property with your postcode and house number and register free of charge on **www.immobilise.com**.
- Consider joining or forming a **Neighbourhood Watch Scheme**.
- Remove valuables from view of ground floor windows and store high value items (i.e. jewellery, passports) in a safe or bank vault.

CHINEHAM LIBRARY

If you haven't done so already, there is still time to volunteer to assist us with this year's **Summer Reading Challenge**, called **Mischief Makers**, which runs from **14th July** for **two months**. The local youngsters derive enormous pleasure from participating, but we cannot run it successfully without the help of our lovely volunteers. If you are aged 14 plus and could consider helping, please do get in touch with us. Thanks.

We have two more evening events come up, following the success of the author talk from Jean Fullerton in April. On **14th June** is '**C.S. Lewis: *Beyond Narnia***' an evening of readings from his works for adults. On **25th July** we have '**Bannocks and Blood**', a murder mystery evening based on **Anne Cleeves' *Cold Earth***. Both events cost **£5 per head** with tickets bookable in advance. Do consider giving one or both events a try.

All our regular activities take place this month. Thus we have **Rhymetimes** on **Tuesdays** at **10.00am** for under ones and **11.00am** for over ones. There is **Craft** on **2nd June** available to drop in between **10.00am** and **midday**, and **Storytimes** for pre-schoolers on the other **Saturdays** at **10.00am**. **Construction Club** for children to play with Lego takes place from **2.00 to 3.30pm**. **Chatterbooks** meets on the **14th** from **3.45 to 4.45pm**, for details of **Coding Club** please contact the Library.

The **new reading group** meets on the **30th June** at **10.30am**, and the **Creative Writing Group** on **31st May** at **5.30pm**, both would welcome new members. **CHIPPS** meets on the **13th** at **10.00am** and the **Crime Reading Group** on **9th June** at **10.30am**. **Age Concern** will be her on **Wednesdays** between **10.00am** and **1.00pm**, sessions can be booked via their office on : **01256 423874**. For the latest information please check social media.

Cathy Foster

The Barn Animal Hospital

01256 329522
www.barnvets.co.uk



Our friendly caring team welcomes new clients and their pets to our purpose built veterinary hospital.

24 hr on-site nursing care

Mon-Fri: 8am-8pm | Sat: 8.30-6pm |

Sundays & Bank Hols: 11am-1pm
(by emergency appointment only)

Great Binfields Road, Old Basing,
Basingstoke, Hampshire
RG24 8AD (near Tesco's Chineham)

- Vaccinations
- Puppy parties
- Laboratory
- Ultrasound, ECG
- X-ray Endoscopy
- Home visits
- Pet passports
- Neutering
- Microchipping
- Large car park
- Veterinary ambulance (air-con)
- Reception staffed by trained veterinary nurses

**The only small animal hospital
in the Basingstoke area.**

Awarded tier 3 status by the
Royal College of Veterinary Surgeons.



TWO GUYS

KITCHENS ■ BATHROOMS ■ APPLIANCES

DESIGN | SALES | INSTALLATION

01256 363123
enquiries@twoguys.co.uk
twoguys.co.uk



ARMSTRONG ROAD, DANESHILL EAST, BASINGSTOKE, HAMPSHIRE RG24 8NU

Lamberts Plumbing Services

PLUMBING & HEATING CONTRACTORS

BOILER INSTALLATION & SERVICING

BATHROOM INSTALLATION & TILING

GAS SAFETY INSPECTIONS

ALL ASPECTS OF MAINTENANCE REPAIRS

NO JOB TOO BIG OR SMALL

Railside, Station Road, Hook, Hampshire RG27 9HT

Tel: 01256 783597 – Mobile: 07501 559668

Email: lamberts_plumbers@yahoo.com www.lambertsinhook.co.uk

**Start every
day with
a healthy
smile**



- High quality general dentistry
- Cosmetic dentistry
- Orthodontics
- Teeth whitening
- Implants
- Facial aesthetics
- Early morning, late evening and Saturday morning appointments
- Children seen free on NHS
- Reduced rates for 18-22 year olds
- Denplan



**Local, friendly,
professional
dental surgery**

Call 01256 840141

www.guineacourtdental.co.uk

21-22 Guinea Court, Chineham, Basingstoke RG24 8XJ



Guinea Court
Dental Surgery

NEWS FROM BASING HOUSE

Our June highlight will be the **Chapterhouse Theatre Company's** performance of **Shakespeare's** best-loved romantic comedy – *A Midsummer Night's Dream*, on a pretty appropriate date – **Thursday 21st June**. So, if you'd like to let yourself be whisked away on a thrilling journey to the most magical of forests and meet star-crossed lovers, playful fairies and hilarious travelling players, this is where to be. There are also beautifully designed Elizabethan costumes, a wonderful musical score and enchanting woodland creatures coming together to make this an evening of unmissable summer garden theatre.

Doors open at **5.00pm**, and the performance starts at **6.00pm**. Tickets are **Adult - £17.60, Child - £11, Family (2 adults, 2 children) £49.22** (inc. booking fee). **Online booking** is available at www.seetickets.com/event/a-midsummer-night-s-dream/basing-house/1203766 or by contacting the **visitor centre** by **phone** or in **person**. Different parking arrangements also apply for this event, with information on booking. The 12-month standard admission ticket does not apply for this event.

For **half term week** we are running more sessions for children in our archaeological dig pits on **Tuesday 29th May** from **11:30am to 12:30pm** and from **2:00 to 3:00pm**, **Thursday 31st May** at the same times and on **Saturday 2nd** from **1:00 to 2:00pm**. There is **charge of £3.50 plus standard admission**.

There are craft courses – **candle making** on **Wednesday, 30th May** and **lino cutting** on **Wednesday, 6th June**. And remember, your standard admission ticket now lasts for a year.

Full details about Basing House, guided tours, courses, events, where to park and how to book are at www.hampshireculturaltrust.org.uk/venue-events/68. Otherwise ring **01256 463965** or call in at the **visitor centre**, next to the **Great Barn** between **11.00am and 4.00pm**, **Saturday to Thursday**.

Andrew Howard 01256 327014

THE MILL FIELD CONSERVATION GROUP

What's around this month:

May brought us plenty of Chiffchaffs, Blackcaps and the Lesser White Throat. During June we should see flowerings of the orchids (Common Spot and Pyramid, both a purple colour) and the Grass (pink) and Meadow (yellow) Vetchling. On warmer days butterflies to watch out for are Meadow Brown, along with the Marbled white. There'll be increased numbers of birds around the field feeding their young, the nesting Whitethroats being particularly noticeable, and we should also be seeing Swifts and House martins in flight and the raptors such as the Hobby hunting from above. Dragonflies will also start to appear in the areas of the field near the water and the woods. Early in the morning, or later in the evening, there's also the possibility of seeing a grazing roe deer or a fox.

Anne Francis (07974 944439)

Email: millfieldoldbasing@yahoo.co.uk

Facebook: **Mill Field Conservation Group**

Transforming homes in Old Basing since 1996

Quote
'BASINGA'
for a preferential
quote.

- ✓ Windows & Doors
- ✓ Conservatories & Orangeries
- ✓ Garage Doors
- ✓ Guaranteed Work
- ✓ Great Prices



Call 01256 841522

riptonwindows.co.uk

Home Maintenance Services

Family Business - Fully Insured - Free Quotations
References by Request - 25 Years' Experience

Jobs Undertaken

Fencing - Drylining/Studwalls - Painting/Decorating
Laminate Flooring - 2nd Fix Carpentry - Plumbing - Tiling
Fitting/Designing of Kitchens and Bathrooms

Marcus Underdown

Property Maintenance Expert

01256 479327 • 07878 078135
mtunderdown@virginmedia.com

"We do anything from changing a tap to refurbishing your bathroom"



Free car park
Emergency appointments
Home visits
Free advice on rehabilitation
Free advice on exercises
Free ergonomics advice

DO YOU SUFFER FROM.....

Back Pain, Sciatica,
Headaches,
Sports Injuries,
Shoulder Problems
Neck Pain, Joint Pain,
Elbow & Wrist Problems,
Muscular Strains

PJH

Window Cleaning Services

Local, reliable window cleaner

For a free, no obligation quote for

• Window cleaning • Facias
• Gutters • Conservatory Roofs

Please call Pete on

07762 616600

e-mail: pjhcleaning@gmail.com

OLD BASING
Old Basing Health Centre,
Manor Lane
Old Basing | Hampshire | RG24 7AE
01256 868 370

CLASSIFIED ADVERTISEMENTS

PIANO LESSONS: Beginner / intermediate for children and adults.
Qualified and experienced teacher. Mrs Philippa Ford 01256 470174

Jane Stockdale - HOME COOKING FOR ALL OCCASIONS

SPECIALISING IN CAKES & CANAPES

01252723161 / 07775696918



JUST IRONING AND CLEANING: Reliable and trustworthy service.
Tel. 07880 727610

Submissions to the magazine and website can be made via www.basinga.org.uk using the web forms:

Selection for Articles/Letters and Diary Dates will be found on the “Submissions” dropdown and for Free and Concession Ads on the “Advertise with us” dropdown. Paid advertising enquiries can also be made in the same way.

Submissions made via the forms now provide a common input for both the magazine and website and are automatically routed to the member of the team responsible for processing them. All submission must be received by the 10th of the month previous to the magazine issue month.

If you have trouble finding the forms, you can of course contact us and we will advise.

Our privacy Policy is available to read on the website which includes the new GDPR requirements for publishing photographs.

Contacts for general enquiries and assistance:

advertising@basinga.org.uk, editor@basinga.org.uk or webman@basinga.org.uk

All Advertisements in the magazine and website are inserted in good faith and the Basinga Management Committee accepts no responsibility for any statement, omission or errors made by the advertisers; nor endorses the products or services advertised. The views and opinions expressed in the Basinga are those of the organisations, individuals and authors concerned and not necessarily those of the Basinga Management Committee.



**We've arrived at
Festival Place!**
Open 7 days a week


eric robinson
solicitors

**01256
224775**

www.ericrobinson.co.uk

Family | Wills, Trusts & Probate | Dispute Resolution | Property
Criminal Defence | Employment | Commercial | Immigration



County Carpets Ltd

Established 1964

- *Offering a wide range of products & manufacturers*
- *The very best quality*
- *Reliable & helpful advice*
- *Free estimates*
- *Free parking*



Opening Hours
Mon to Wed 9:30am to 4:00pm
Thur and Fri 9:30am to 5:00pm
Sat by appointment only

Telephone 01256 467442

enquiries@county-carpets.com

www.countycarpetsbasingstoke.co.uk

Units 4/5, The Beresford Centre, Wade Road, Basingstoke. RG24 8FA

30 Years in Basingstoke

FREE ADS

Note: All ads are processed in received date order. Ads not included this month will be entered in next issue, space permitting. If you do not want your ad to appear later contact the Advertising Manager. Ads may also appear on the web site with pictures.

KING SIZE FEATHER & DOWN DUVET **£35** **01256 476937**

Hardly used.

KING SIZE QUILTED BEDSPREAD **£25** **01256 476937**

Panels of various dark blue patterns.

CONCESSION ADVERTS

OLD BASING ALLOTMENT & GARDEN SOCIETY: Shop will be open 3rd/17th June only from 10.30 am to 12 noon.

FRIENDS OF OLD BASING SCHOOLS SUMMER FAIR, SUNDAY 1ST JULY 12-3PM.

A circus entertainer and workshops, arena performances, fun inflatables, assault course, water play, face painting, a variety of games and stalls for everyone, BBQ, Beer, Pimms, hot & cold drinks, cakes & ice-cream.

Entrance £1.50 per adult, accompanied children free.

At St Mary's Junior School, Belle Vue Road, Old Basing.

LADIES FIRST FRIDAY COFFEE MORNING: Why don't you come along and enjoy a cup of coffee or tea (with a biscuit) and a friendly chat at the home of Mrs Dusty Brough 7 Olivers Walk Lychpit on 1st June and also at the home of Mrs Ann Price 10 Olivers Walk Lychpit on 6th July both from 10.30 am to noon.

HAY FEVER

Advice from the **Odiham and Old Basing Health Centres Patient Participation Group.** We will soon be coming up to that time of year when Hay fever sufferers will again be feeling the effect of the Spring pollen.

Symptoms include sneezing, runny nose and itchy eyes and you will experience these symptoms if you have an allergic reaction to pollen. Here is no cure for hay fever but you may be able to relieve the symptoms with treatment, at least to a certain extent. Treatment options include antihistamine tablets, eye drops and nasal sprays, which can help prevent and treat the allergic reaction from occurring and corticosteroids which help reduce inflammation and swelling.

Some self-help tips.....

- Wear wrap-around sunglasses to stop pollen getting in your eyes when you're outdoors
- Take a shower and change your clothes after being outdoors to remove pollen from your body
- Apply a small amount of Vaseline to the nasal openings to trap pollen grains

BEST OF FLOORING

Laying down a good reputation

Suppliers & Installers of:

- Wood Flooring
- Laminate Flooring
- Underfloor Heating
- Carpets & Vinyls
- Amtico

Home Sample Service Available
Free Estimates & Expert Advice

Unit 3 Cufaude Business Park,
Cufaude Lane, Bramley, Basingstoke, Hampshire RG26 5DL

Showroom Open Saturday 10am-1pm

Tel: 01256 810327
www.bestofflooring.co.uk

Email: sales@bestofflooring.co.uk

Checktrade.com



www.basingtutors.com

Basing Tutors

- One-to-One Tuition
- Friendly, personal approach
- Professional tutors

Full diagnostic assessment
with no further obligation

Initial consultation
free of charge

Tel: 01256 470948

Email: admin@basingtutors.com

Local
Tutors
For Local
People



J Cook Landscapes



DESIGN & BUILD, PLANTING, DECKING, FENCING
TURFING, PATIOS, DRIVEWAYS & MAINTENANCE

FULLY INSURED & CRB CHECKED

CONTACT JONATHAN FOR A FREE QUOTATION

01256 412723 - 0771 7214521

E: info@jcooklandscapes.co.uk

www.jcooklandscapes.co.uk



Est. since 1972

Timber Fencing Hard Landscaping Supplies

- Panels (3' - 6')
- Concrete Slotted
- Closeboard / panels
- Concrete Mortice
- Closeboard Gates
- Gates Made To Order

- Decking
- Field Gates
- Trellis
- Chainlink
- Angle Iron
- Palisade Panels

- Railway Sleepers
- Oak sleepers
- Softwood Sleepers
- Posts 3"x 3" - 4"x 4"
- Post & Rail
- Stock Fencing



From ¼ of a ton - 8 ton loads. Also bulk bags with all below *

- Rolawn Turf
- Post fix
- Cement
- Brett Block paving
- Paving Slabs

- Top Soil*
- Sharp Sand*
- Building Sand*
- Ballast*
- Scalpings*

- Landscape Bark*
- 10 mm Gravel*
- 20 mm Gravel *
- Decorative Stone*
- Rockery Stone*

Fencing Supply
&
Fitting Service
Free Estimates



01256 762739



Reading Road, Rotherwick, Hook, Hants, RG27 9DB

www.bmfencing.co.uk email: enquires@bmfencing.co.uk

ODIHAM & OLD BASING HEALTH CENTRES PATIENT PARTICIPATION GROUP

TRAVELLING ABROAD

We make no apology for repeating the advice we have given in previous years.

The holiday season is almost upon us and many of you will be travelling overseas. We could take many pages of this publication writing about the health issues involved but briefly, we suggest you give some thought to the following which is by no means a comprehensive list.

Do start preparing for your trip, especially long trips, four to six weeks before you go. Read the latest health and safety advice for the countries to which you will travelling. - Useful websites are www.gov.org.uk and www.travelhealthpro.org.uk Also check your passport doesn't expire while you are travelling and you have informed your health insurance provider of any changes since you took out or renewed the policy. Did you read about the insurance company who refused to pay to repatriate a client because he hadn't declared an appendix operation since the last renewal?

Find out if you need travel vaccines and make sure your vaccinations are up to date. If you normally have these done at the Surgery they will have a record.

There are still a number of holiday destinations which are at risk of malaria. If you are travelling to or through one of these you may need to start treatment some time before you travel

Prepare a travel kit of health essentials including sunscreen, painkillers and antiseptic. When using sunscreen the bottle's label should have the letter "UVA" in a circle logo and at least four-star UVA protection. Also you need at least SPF15 protection

Whether you are going on a six month trek to the Himalayas or a family holiday in Spain it is vital to have the right travel insurance. Make sure your policy covers all the countries you are visiting or passing through as well as any specific activities you might do. When travelling in Europe make sure you have a valid European Health Insurance Card. (ehic.org.uk). This will entitle you to free or reduced cost medical care. However, it won't cover you for everything that travel insurance can such as emergency travel back to the UK

If you think you are at risk from deep vein thrombosis (DVT) seek advice from your GP. On long haul flights, get up from your seat to walk around and stretch your legs whenever you can. Drink regularly but avoid alcohol and wear loose clothes. Similarly on long car journeys make sure you have plenty of breaks and walk around when you can.

Jet lag can be worse when you move from West to East because the body finds it harder to adapt to a shorter day than a longer one. If you take medication according to a strict timetable, such as insulin or oral contraceptives, you should seek advice from a health professional before travelling.

We hope you have found this helpful and it hasn't put you off travelling. Enjoy your holiday.

OLD BASING TENNIS CLUB

June sees the start of the **OBTC Annual Summer Tournament** with **Finals' Day** and a **BBQ** being held on **Saturday, 1st September**. Throughout the summer **Club Nights** continue on **Tuesday and Friday** evenings, starting at **6.00pm**. We welcome new members at any time, so please do get in touch with our secretary: OBTC.Information@gmail.com for more information - we would love to see you!

Lynne Thomas, Chair



**BASINGSTOKE
ART
CLASS**

- PERFECT FOR BEGINNERS & IMPROVERS
- STEP BY STEP TUITION WITH A PROFESSIONAL ARTIST
- 10 WEEK COURSE
- 2.5HRS PER WEEK
- MORNINGS OR AFTERNOONS
- DISCOVER YOUR INNER ARTIST
- MAKE NEW FRIENDS

SPACES ARE LIMITED - CALL US NOW FOR THE NEXT COURSE
07419 741 670

 www.facebook.com/basingstokeartclass

Looking for a Letting Service from an
Agent who cares?
You'll find us on The Street



all
aspects
LETTING
SERVICES

20% Discount with this advert

T: 01256 470411

69A The Street, Old Basing RG24 7BY
info@allaspectslettingsservices.co.uk

Zoopla



PROPERTY MANAGEMENT • RELOCATION CONSULTANTS • INVENTORY SERVICES

OLD BASING DUKE OF EDINBURGH OPEN AWARD CENTRE.

With this year's D of E participants already well on their way to completing their expeditions (three Bronze teams plus three Gold teams), we are now looking forwards to welcoming new participants to the centre.

We provide local young people with the opportunity to take part in this prestigious award in an "out of school/college" environment. We offer Bronze, Silver and Gold levels so regardless of whether you are new to D of E or have already completed one level but left school/college, you can join us for the next level or come along to complete the level you are on as required.

As an open centre, we offer the chance for participants to meet other young people in a friendly and welcoming environment with a focus on relaxed but high quality training from HCC qualified leaders and trainers with over 50 years D of E experience between them. They will ensure you get the best possible expedition training and help and guide you through the rest of your award at a pace acceptable to you to make your experience enjoyable and rewarding. Unlike the majority of schools, we can support you through all three levels of the award. You can start your D of E from school year 9 and have until your 25th Birthday to complete.

We will be holding our open (Recruitment) evening on **Monday, June 25th at 8.00pm at The Beddington Centre, Riley Lane, The Street, Old Basing**, where parents and participants can gain further information about the award and Old Basing D of E Centre. For more information or to secure a place, please contact **Jackie or Bob Ward on 01256 470583** or email **oldbasingoac@aol.com**

FRIENDS OF OLD BASING SCHOOLS - TRAIL AND FUN RUN UPDATE

With less than 6 months to go, we are well and truly on the countdown now for our inaugural **FOOBS Trail and Fun Run**, taking place on **14th October**. Behind the scenes arrangements continue and we look set to have a fantastic family day lined up for everyone in the village and further afield.

One very exciting development is the recruitment of British champion **Chris Finill** to start the races: Chris has run every London Marathon since 1981 (in under 3 hours on every occasion) and representing England at the Commonwealth Games Ultradistance Championships in 2009.

We are very pleased with the steady stream of entries received since the system opened. Please make sure you don't miss out on your own spot by heading over to the online site to enter, which you can access via the FOOBS website: **foobs.weebly.com/fun-run.html**

As a reminder, there are three distance options to choose from – a 2k run for the younger ones in the village (4-14 years), a 5k run for anyone over the age of 14 and then the 10k which is open to anyone over the age of 16.

We would also like to take this opportunity to say a big thank you to our latest sponsors, Richard Knight and SJB Autotech – your support is very much appreciated and will go a long way in helping to ensure the day is a huge success. If any other readers would also like to offer sponsorship – helping both your local schools whilst raising awareness of your business - then please do get in touch, we'd love to hear from you. We are also still looking to recruit more marshals to help on the day so if you think you could offer your services please do contact us at **foobsfunrun@gmail.com**

Michele Byrne Race Secretary

GETTING OUR HANDS DIRTY

As I retreated wearily from my lawnmower yesterday evening, after several hours of back-breaking work, leaving the garden looking only marginally less like the untamed forests of Borneo, I found myself musing on the idea of the garden as a metaphor for the human condition.

This is nothing new, and has been done many times through history, from the Garden of Eden onwards, but this is surely because it is particularly apt. A garden, after all, is the place where nature and civilisation meet. It is not rural, but nor is it urban. It is nature, but carefully cultivated and manicured nature. Consequently, it is an environment poised on the knife-edge between order and chaos. Between the unfettered, lawless wilderness, and the concrete rigidity of the city. In parks and gardens humanity imposes itself on the natural world and brings the unruly vegetation into a state of order and harmony.

But this is no easy task. It requires long periods of effort and attention and expense to bring a garden to an acceptable condition, and even more blood sweat and tears to maintain it in that state. If this is true of gardens, it is equally true of ourselves. We seek lives that are neither sterile and arid as a car park, nor as dark, treacherous and full of terrifying beasts as the Amazon jungle. Lives that also inhabit that space between order and chaos.

For that to be the case we need to put in the work in our own garden – the soul, or psyche, or whatever you prefer to call the private part of yourself that is most truly you. And that is not easy. The temptation can be to pour concrete over the lot – to focus exclusively on work perhaps – to lead a mundane, rule-bound life, perhaps brightened up by a few plastic flowers. Alternatively we might ignore the garden entirely, and wake one morning to find the neglected roots and tendrils invading the brickwork of our walls or undermining the foundations of the house. This is the danger of the unexamined life; that we are overwhelmed by the unattended instincts, fears, passions and compulsions that lie beneath the surface.

The Christian Life is often talked about as though it was primarily concerned with rules, laws and prohibitions, but that is not how I see it – it is more a question of maintaining balance. The whole story begins in a garden, when Adam and Eve, the first humans, find that they have upset the balance of the garden home for which they were created, and are sent out into the howling wastes. But they are not abandoned. In the fulness of time, Jesus comes to rectify the mistake – facing up to the darkest realities of the human soul, plumbing the depths of death itself, and rising again to a new life, a new beginning, into a garden; the garden of Gethsemane. Indeed, when Mary Magdalene first encounters him, she mistakes him for the gardener. And so indeed he is. The one who takes us gently by the hand and invites us to know ourselves, to tend our overgrown gardens unafraid of being open and truthful with ourselves, and to experience life in all its fullness.

Here is something for all of us to ponder as we enjoy the Flower Festival at St Mary's on 7th-8th July, but for now, I'm off to mow my lawn...again.

God Bless,

Fr Alec.

THIS MONTH AT ST MARY'S CHURCH

- Saturday, 2nd June** **Men's Breakfast Group** from **8:45 to 10:00am**. Men of all ages are invited to join us for good food and fellowship.
- Sunday, 10th June** **All Age Eucharist** at **10.00am**. This month with the theme of God's Family.
Traidcraft Stall after the **10.00am** service in the **Parish Room** selling all kinds of Fair Trade food and craft items with the proceeds going to the producers in developing countries. *St Mary's is a Fair Trade church.*
- Sunday, 24th June** **Gill and Steve Sakakini's** final service at **St Mary's**. **Gill will be ordained Deacon in Winchester Cathedral on Sunday, July 1st at 10.00am**. All are welcome to this occasion!
- Monday, 25th June** **Tea and Talk Cafe** at **2.00pm**
- Fridays (until July 20th)** **Coffee Catch Up Cafe** from **2.00 to 4.00pm**. Come along and sample delicious cakes, outside if weather permits!

After the weekly 9:30 am service at St Mary's refreshments are served in the Parish Room which is an informal setting in which to meet other members of the congregation. If you have time after the service do join us, you will be very welcome.

For more details about the life of St Mary's please visit www.stmarysoldbasing.org.uk or find **St Mary's Facebook page** and follow us on **Twitter (@OB&L_St Marys)** where you will find fresh updates including sermons. The church is open daily for prayer and you are welcome as you are every Sunday.

Looking forward to July

- Sunday July 1st** Ordination Service in Winchester Cathedral 10.00am
- Weekend 7-8 July** "Music in Bloom" - a Flower Festival, with Art Exhibition & Open Gardens
- Sat 7th July** Cantemus Concert, at 7.30pm
- Sun 8th July** Festal Evensong, at 600pm

OLD BASING METHODIST CHURCH

- Sunday, June 3rd** **Church Anniversary** at **10.30am**. Worship will be led by Mrs Sarah Whithorn followed by a shared lunch.
- Tuesday, 5th, 19th June** **Craft group - 2.00 to 4.00pm**. Bring your own craft or items will be provided.
- Sunday, June 10th** After the service we will be holding our annual church meeting.
- Monday, June 11th** **Safeguarding** refresher course starting at **2.00pm**.
- Tuesday, 26th June** **Mid-week communion** at **3.00pm**. with the Reverend Alison Parker.

Our regular **Sunday worship** starts at **10.30am**, coffee and tea are served after the service. Children are welcome into our junior church. Come and join us for Worship, and Tuesday Craft - a warm welcome awaits you.

CHURCHYARD CONSERVATION GROUP (PIOCC)

This month the working parties will be on **Saturday, 2nd June at 10.00am** and **Thursday, 28th June at 2.00pm** – meet in the church lobby. This is a community project, not just for churchgoers, we look forward to seeing our regular volunteers and also new participants; just turn up in gardening clothes and bring gloves, the tools are provided. Our Saturday morning sessions last about three hours (with a coffee break and chance to relax) and our Thursday afternoons about two hours.

As mid-summer approaches the summer flowers are blooming. Walking around the churchyard is an experience of discovery and revelation. Look for insects, the bumblebees and butterflies love the flowers in the Central Glade. On sunny days Speckled Wood butterflies fly through the woodland while in the open grassland Meadow Brown and Ringlets may be found. Why not come and see what you can find? Or perhaps just sit for a while on the WI seat, relax and enjoy, allowing the healing peace to soothe. The Conservation Area is a community space for all to enjoy. For further information please ring **Fay Farrant** on **01256 476863**.

Margaret Carr www.stmarysoldbasing.org.uk

ST MARY'S CHURCH SUMMER FLOWER FESTIVAL

St Mary's is having a Summer Festival with Flowers, Music, Art and Open Gardens. We kick off on the evening of Friday, 6th July with a preview of the Art Exhibition at 7.30 to 9.00pm when you can buy as well as look. On Saturday 8th and Sunday 9th the Church is filled with beautiful floral arrangements on the theme Music in Bloom.

Local residents are opening their gardens for you to visit over the two days. There will be refreshments with St Mary's famous cream teas on Sunday afternoon. The Art Exhibition will be open with paintings and cards to admire, and buy!

On **Saturday** evening at **7.30pm** is a concert in church by **Cantemus**. If you haven't heard this group before you have missed something very special.

Finally, there will be a **Festal Evensong** on **Sunday at 6.00pm** to round things off in style. The Church choir will be joined by friends to bring you the beauty of sung evensong. Do come and tell your friends. This will be a very special weekend.

Tricia Renwick

SUNFLOWER SERVICE AT ST MICHAELS HOSPICE

St. Michael's Hospice invites to you their annual **Sunflower Service** on **Sunday, 10th June** held within the Hospice gardens. Starting at 2.00pm there will be a blessing for all of the sunflowers which have been dedicated to loved ones. The blessing will be conducted by the Hospice Chaplain, Tom Honey, and will take place within the Hospice Labyrinth Garden where all the flowers will be displayed. After the service, we welcome you to join us for afternoon tea. You may, if you wish, take your sunflower home with you or collect it anytime during the month of June where they will stay displayed in the beautiful gardens.

For more information on the Sunflower Service visit the website stmichaelshospice.org.uk, email events@stmichaelshospice.org.uk or call the **Fundraising Hotline** on **01256 848848**.

Laura Hughes, email: laura.hughes@stmichaelshospice.org.uk

Berryford

Accountancy Services

Do you need an accountant?

We offer an accountancy service for small businesses and individuals

Year End Accounts
Bookkeeping
VAT and Tax
Personal Tax Returns

01256 472832 07790 948310

mike@berryford.co.uk

www.berryford.co.uk



MIKE'S GARDEN SERVICES

- General garden maintenance
- Landscaping and planting
- Garden clearances • Tree / hedge work
- Fence & shed work / treatments
 - Lawn mowing • Turf laying
- No job too small • Fully insured
- Logs, Kindling and De-icer deliveries
- Free estimates • Competitive rates

Tel: 01256 325015

mnm.chapman@talktalk.net

www.gardenerbasingstoke.com

AFFORDABLE CARE & SUPPORT
FOR ALL YOUR GARDEN NEEDS



LOCKnSECURE Locksmiths

No Call Out
Charges



**Locked out? Broken Key or Lock? Lost Keys?
NO PROBLEM**

- ✓ Emergency door, window & car lock opening
- ✓ All types of locks supplied & fitted
- ✓ Insurance approved BS 3621 locks available
- ✓ 'Beat the Burglar' Anti-Snap cylinders
- ✓ Free Security audits & Quotations
- ✓ Burglary repairs & properties secured
- ✓ Insurance, domestic & commercial work
- ✓ Specialist in multi-point locks & Smartlocks
- ✓ Alarms & CCTV fitted
- ✓ Fully insured service
- ✓ Trading Standards Approved
- ✓ All workmanship & parts fully guaranteed



Call Len on 07785 384914

Email: locknsecure24@gmail.com

Web: www.locknsecure.co.uk

Proud members of
Checkatrade.com
Where reputation matters

Basingfield Court Residential Care Home



**Sanctuary
Care**

**Rated overall
Good by
the CQC***



For more information call us on:

01256 321 494

Huish Lane, Old Basing, Basingstoke,
Hampshire RG24 7BN

www.sanctuary-care.co.uk

Sanctuary Care Limited is a subsidiary of Sanctuary Housing Association, an exempt charity

*From an inspection on 14 February 2018.

BEFRIENDING NEEDS YOU!

St. Michael's Hospice and Odiham Cottage Hospital is recruiting **volunteer befrienders**. As the befriending Service in Odiham, Hook, Hartley Wintney, and Old Basing areas goes from strength to strength we are constantly looking for more home visiting volunteers. Would you enjoy providing social companionship to people who are lonely and isolated and living with long term and or life limiting illness? This role is ideal if you are keen to be an active member of your community, delivering a vital service, whilst enjoying a rewarding role.

If I want to become a Befriender what is expected?

For just 2-hours a week, you can make a real difference to someone living in your local community. Relevant training, as well as regular and ongoing support will be held locally at Odiham Cottage Hospital. The next three day training course will be held in September 2018.

For more information please contact: **Maria Bryant, Befriending Coordinator on: 01256 393609** or email: **och.befriending@stmichaelshospice.org.uk**

ST. MICHAEL'S HOSPICE (NORTH HAMPSHIRE) BIG WHEEL 26

St. Michael's Hospice (North Hampshire) has opened registration for their **26th Big Wheel** event taking place on **Sunday, 22nd July 2018 at 9.00am at Down Grange..** Riders will spend a glorious summer's day riding through the beautiful Hampshire countryside to raise funds for North Hampshire's only adult Hospice.

Last year over 1,000 cyclists enjoyed a variety of routes and we are hoping for a record turnout this year. The very popular Advanced Level 65 miles is back for a third year and, after a successful introduction last year, the Intermediate 25 mile route will return. With options for a Challenger 39, a Beginner 15 and the Family 5 mile route, there is something for everyone.

For youngsters not yet ready to take on 5 miles, there is our Little Wheel which takes place entirely on site. All the rides will start and finish at Down Grange Sports Complex where everyone can also enjoy a range of refreshments. All finishers, from our Little Wheel to 65 milers, will receive a lovely medal to commemorate their efforts.

Prices start from £5 for children and £10 for adults and full details are available on our website. To save time, avoid long queues and get the discounted entry price, we advise you to register beforehand. However, you can also register on the day.

Laura Hughes, Events Manager for the Hospice said; 'Big Wheel is our biggest fundraising event for 2018 and attracts both families and experienced riders. The Hospice is getting the support of some wonderful local companies to sponsor the event this year. A big thank you to The Breeze and Precision Cycles for their support'.

St. Michael's Hospice is a charity which provides its palliative and end-of-life care to patients and their families free of charge. It relies upon community support to generate over £3.1 million every year.

To sign up and for more information please visit **cyclebigwheel.co.uk**.

Follow us on Twitter **@smhbasingstoke #BigWheel26**,

Like us on Facebook at **St Michael's Hospice (North Hampshire)**

Email: **laura.hughes@stmichaelshospice.org.uk**

Laura Hughes

A. SEWELL

Lighting, Electrical & Audio Visual

All Lighting and Electrical work undertaken including:

- Security & Emergency Lighting
- Interior & Exterior Lighting Design & Installation
- TV, Telephone and Data Distribution
- Multi-room Audio/Visual
- Alarm Systems, CCTV & Door Access Systems
- Electrical Alterations & Re-wires

01256 329893

www.asewell.co.uk



Lisa Ives M.Ost PgCACE MSCCO

GOsC Registered Osteopath

01256 316566

07814 365523

Back & Neck Pain/Ache
Sporting Injuries
Muscular Strains & Ligament Sprains
Muscle Tension
Sciatica
Spasms
Neuralgia & Fibromyalgia
All Joint Pains
Arthritic & Rheumatic Pain
Structural & Cranial Osteopathy
Ultrasound & Dry Needling

Lisa Ives Osteopathy®

Grove House, Lutyens Close, Chineham Court,
Basingstoke, HAMPSHIRE, RG24 8AG.

www.lisaivesosteopathy.co.uk
enquiries@lisaivesosteopathy.co.uk



BERRY BROS & RUDD
3, ST. JAMES'S STREET, LONDON
WINE & SPIRIT MERCHANTS



*Now you can taste the finest
wines and spirits in the
world. In Basingstoke.*

Just like our London store, our Warehouse Shop contains some of the finest wines and spirits in the world. Unlike our London shop, however, prices start at just £5, with up to 40 percent off a host of bin-end bottles – from Bordeaux, Champagne and beyond.

Berry Bros. & Rudd Warehouse Shop
Hamilton Close, Houndmills, Basingstoke
RG21 6YB

IS THIS THE END OF THE HIGH STREET?

Dear Editor,

I read Hazel Vanbergen's letter in May's Basinga with a sense of bewilderment and amusement. To be honest I was half expecting her to finish by blaming foreigners for her dissatisfaction. I'm not sure if it was the misty-eyed and nostalgic backward look at life or the risible refusal to accept change and the real reasons for it that I found most bewildering. If her local butcher failed to successfully embrace change (digital technology, home deliveries, competition, changing tastes etc) and failed to provide a service that more people want, then blaming supermarkets and others who have successfully recognised and adapted to the changing world, is not the answer. If Mrs Vanbergen and others like her want to use and preserve the local artisan bakery for example, then they should do so but be prepared to pay the premium prices less popular and more specialist services require. People shop at other retailers and online because those alternatives provide a convenient service at a price people want or need. It is very sad that Mrs Vanbergen and others like her do not seem to recognise or accept some of the realities of our fast changing world! The cost of living continues to rise (not helped by the so obviously ridiculous), milk is delivered less frequently because demand for the service has reduced, fewer ATMs are needed as we inexorably move toward a cashless society, digital technology has changed demand for postal services dramatically. For all the negatives Mrs Vanbergen focuses on there many more positives where innovation and enterprise have succeeded. If Mrs Vanbergen wants shopping for everyday items to be a major activity in her life, then she should spend her time doing just that, but the rest of us shouldn't be dragged backwards to do the same. Progress is best achieved when we embrace, adapt to and influence change. Lamenting the past, blaming others and aimlessly regressing society will be the doom of us all! We can be sure of that!

Yours faithfully,

Jeremy van Hagen

NWR - A NATIONWIDE GROUP FOR WOMEN

What is on your bucket list? That was our latest topic for discussion. Some of us were scratching our heads finding managing day to day more than sufficient challenge. Others were more venturesome. Travel featured highly with destinations like Antarctica, Fiji and the Seychelles. Also trips to see The Northern Lights, climb the Inca trail in Peru, tour Australia in a camper van, take a helicopter ride through the Grand Canyon, climb Sydney Bridge, go into space, ride a horse at full pelt plus find a sugar daddy to pay for it all! Another member must wait until she is 107 to beat the record of the oldest person to go down a zip wire but in the meantime will celebrate 50 years at the wheel by driving over all the bridges spanning the Thames. So what would be on your bucket list?

We are a very social group and our very informal meetings are usually held in the afternoon in each others' homes. We also have a **Lunch club** and a **Reading group** who meet monthly in the evenings on the 4th Thursday of the month. For more information please look at the website: **nwr.org.uk** or to find out about our group, or to come along to any of our meetings (to check us out with no obligation to join)

Please contact **Avril Keable**, email: **avrilkeable@hotmail.co.uk**, telephone: **01256 322832** or **Evelyn Jones**, email: **evelyncjjones@hotmail.co.uk**, telephone: **01256 816636**

P.R. BRICKELL

7 Bexmoor Way, Old Basing



**All aspects of
carpentry work
undertaken**



FOR FREE ESTIMATES & ADVICE ON
KITCHEN FITTING, STAIR PARTS RE-
PLACEMENT, NEW DOORS FITTED, RE-
PAIRS TO ROTTEN TIMBER AND
FRAMES, WARDROBE FITTING, AND
GENERAL MAINTENANCE WORK,
NO JOB TOO SMALL

PLEASE PHONE
PETER ON 01256 355534



R.KNIGHT JCB & PLANT HIRE

All Ground Work Undertaken

Fencing & Tree Work

Tel: 01256 324588

Mobile: 07703 458372

Groundworks | Footings | Driveways | Landscaping



Lisa Jane
SCHOOL OF DANCE

RAD BALLET ISTD MODERN AND TAP
CONTEMPORARY AND STREET

AGES: 3 -18 GIRLS AND BOYS

OLD BASING, LYCHPIT AND CHINEHAM

FULLY QUALIFIED STAFF

FRIENDLY AND FUN

**NEW CLASS: ADULT TAP AND CYGNETS
BALLET**

Tel: 01256816821

Email: info@lisajanedance.co.uk
www.lisajanedance.co.uk

Painter & Decorator

Sarah Stevenson



Quality Interior work
Over 7 years experience
NVQ 3/ City & Guilds
Tidy and reliable

Call - 01256 841842 (Old Basing)

for a free estimate

PC Doctor (Hampshire) Ltd

Andy Pearce 01256 841204



Home & Small Business PC's/printers supplied.

PC repairs & upgrades, Laptops & Desktops.

Wireless networking. Virus & Malware removal.

New PC & Tablet setup.

Data & Email Transfer from old system.

pcdoc.hampshire@btinternet.com

OLD BASING WI

On 2nd May we held our A.G.M. Our Chairwoman thanked all committee members and helpers for another successful year. Membership numbers remain healthy and our fundraising efforts over the year at the Carnival and Basing House events were commended. The competition this evening was “a home- made cake to be judged by the Members” and we were not let down in the slightest! It was agreed that this was a very good idea that should be repeated soon.

Our next meeting will take place on **Tuesday, 5th June** at the **Parish Rooms**, when we will be learning about Life in the Stone Age. The competition will be “**Anything over 100 Years Old**”. Upcoming events include a cream tea on the Watercress Line and of course we will be looking to sell our cakes, preserves and handicraft items at the **Old Basing Carnival** on **Saturday, 16th June**. Do pop along and visit our stall.

For information about the Old Basing WI please go to at www.hampshirewi.org.uk click on WI's from the top of the page and select Old Basing from the list.

SHOWTIME (ACT 2)

What happened when Cinders met Robin? All will be revealed next November when a brilliant new stage production will open in the in the village hall in Old Basing. With the script composed -apparently with much merriment by director Rowena Hackett and producer Rosemary Kershaw – I am led to believe this involved a glass or two to aid creativity – they have produced a scenario which they promise will be “like no pantomime you have seen before”.

Owing to a Press embargo and the Data Protection Act, much of the activity behind the scenes has to remain under wraps. But I can reveal that the stars of the show have been cast and there is no shortage of aspiring thespians ready to “tread the boards” while those chosen have been observed behind curtains trying out their costumes.

Notice of the performance dates and times are being prepared to be distributed around the village in good time for those seeking to come to the show.

This is a not-to-be-missed event for the whole village of Old Basing to enjoy. So pencil PANTO in your diary for around the end of November. There is more than one performance so you will be spoilt for choice. **Watch out for Act 3 coming soon.**

Peter Dark - Showbiz Correspondent.

BUMBLEBEES - HAMPSHIRE & ISLE OF WIGHT WILDLIFE TRUST

Bumblebees are one of our most familiar and endearing garden insects. Hearing their distinctive buzz in the air and spotting them dance from flower to flower epitomises a perfect summer's day. They are also vitally important for pollinating hundreds of plant species, including many crops that provide our food.

Of the 27 species of bumblebee recognised to inhabit the UK, three are now extinct and many have suffered considerable declines in distribution. Our identification tips, in the full article by Caroline Meech in **Basinga Extra**, should give you a helping hand to identify five of the most common you might see in your garden.

Caroline Meech



24hr Airport Transfers

Professional Door to Door Service

"Reliable, friendly transport solutions from a local company you can trust"

01256 467577

www.basingstokeairports.co.uk

Departures

Snazzy Paws Dog Grooming



For Baths, trims, nails
Ear plucking, anal
glands etc. All breeds.

Modern salon in Little Basing
Professionally trained & fully insured
Competitive prices.

Web: www.snazzypaws.co.uk

Call Jodie 07523 866963

Lee Quinlan



Kitchen

&



Bathroom Fitter

You buy it and I'll fit it!

"One stop" service for accompanying:
Plumbing, Tiling, Plastering,
Flooring & Woodworking

Electrical Work



01256 811830

email: enquiry@leequinlan.co.uk

web: www.leequinlan.co.uk



WESTPORT GREY

BUILDING CONTRACTORS

01256 636511

Extensions | Loft Conversions | Renovations | New Builds



WWW.WESTPORTGREY.CO.UK

Westport Grey Ltd. - Registered in England - No. 6216684

BUILDING YOUR DREAMS

THE BASINGSTOKE LADIES CHOIR

The Basingstoke Ladies Choir is an outstanding choir **who just love to sing**. Do you love to sing? Do you love music of all genres? If so why don't you come along and join us? The Basingstoke Ladies Choir rehearses every Monday evening. For further information, visit our website at **www.basingstokeladieschoir.co.uk**. Alternatively, you can get in touch with: **Alwyn Brenchley**, **alwynb46@talktalk.net** or telephone **01256 781194** or **Pam Verdon**, **verdots@verdonet.org.uk** telephone **01256 702905**.

Apart from the well documented health benefits of singing, our choir participates in concerts both home and away and overseas! We are very friendly, welcoming and inclusive and enjoy a range of social events specifically organised for our members. We also love raising money for charity.

Under the direction of our new musical director, Rob Elliot, we are learning a new and varied repertoire so **now** is the time to join. Our last concert in April "A Celebration of Life and Love" in memory of loved ones, raised over £900 for St. Michael's Hospice. The informal cabaret style table arrangement was well received by our guests, including the Mayor and Mayoress of Basingstoke. The venue was packed to the rafters. At the end of the concert the hall was buzzing, with an ovation plus many comments of praise. If you would like to be part of this exciting, progressive choir then, **come and join us!**

Sandra Neale

BASINGSTOKE CIVIL SERVICE RETIREMENT FELLOWSHIP

At the meeting on 2nd May members were able to buy plants that had been donated by other members in order to raise funds towards the purchase of a new sound system. Christine Broadbent, the Welfare Officer, gave her report and then Tony Brazier, the Secretary, mentioned the enjoyable trip taken by members to Chartwell where Winston Churchill lived from 1922 until just before his death in 1965.

He then gave details of the forthcoming trip on **Wednesday, 11th July to Painshill Park** near Cobham, Surrey which is an 18th century landscape garden created by the Hon. Charles Hamilton whose vision was to create a new style of magical garden inspired by Renaissance art and his Grand Tours.

This month's talk was from Alan Grace entitled "Amazing Berlin 1914 – 1989" which he illustrated with many photographs, recordings and artefacts from the period. He covered the rampant inflation after WW1, the rise of Adolf Hitler and the Olympics of 1936 before moving on to WW2 followed by the death of Hitler. He then went on to give details of the blockade by the Russians from June 1948 to May 1949 and the airlift which ended it and also the difference in life between East and the West of the wall and what it meant when it was eventually dismantled in November 1989.

The next meeting is on 6th June which is our Open Meeting when there will be a buffet and anyone is welcome to come and join us. The speaker will be Paul Whittle on Traveller's Tales. The group meets on the first Wednesday of each month at Brookvale Village Hall from 10 am to 12 noon and all retired Civil Servants and their partners are welcome. Further details about meetings and outings can be obtained from the Secretary **Tony Brazier** on **01256 418770**

David Cowling

Trusted since 1802
HENLEY-ON-THAMES | HAWLOW | BASINGSTOKE



sales • lettings & management • commercial • development • rural

Residential Sales - **01256 840077** Lettings - **01256 337100**

www.simmonsandsons.com • 12 Wote Street, Basingstoke, Hants RG21 7NW

FOR MORE THAN JUST A LEAKY TAP



Niall Catlin
PLUMBING & HEATING

EST. 1991

Leaky taps to full bathroom installation
Power flushing | Water softeners | Hot water cylinders

Boiler breakdowns, repair and servicing
Boiler replacement | All allied trades
All aspects of plumbing and heating



Checkatrade.com



WORCESTER
Boiler Group

www.niallcatlin.co.uk

01256 818086 | 07774 741021

www.oakley-furnishing.co.uk



Showroom

The old Station Andover Rd
Oakley Basingstoke RG23 7HA
Tel: (01256) 782070
OPEN 9am - 5pm MONDAY - FRIDAY CLOSED WEDNESDAY
SATURDAY 10am - 4pm

**CARPET EDGING SERVICE
ALSO AVAILABLE**

**VINYL, WOOD, CARPETS, LAMINATE,
FURNITURE FOR THE DINING ROOM, LOUNGE, BEDROOM
AND STUDY
Range of Accessories and
Hand Made Jewellery.**



**NEW
for
2017**

LODDON WINDOWS & DOORS

Local Family Run Business Established for over 35 years



GREAT RANGE INCLUDING:

Conservatories | Windows | Aluminium Bi-fold Doors | Composite Doors

- ✓ Quality UPVC Windows and Conservatories
- ✓ Attention to Detail - Local Recommendations
- ✓ Competitive Prices - Free Quotations
- ✓ 10 Year Guarantee - FENSA Registered

Tel: 0118 9815440 | 01256 464304 (evenings) | 07831 200613 (mobile) | www.loddonwindows.co.uk

OLD BASING ROYAL BRITISH LEGION UPDATE

Monthly Branch meeting

The June meeting will start at the regular time of **7.45pm for 8pm** on **Thursday, 14th**, a week later than normal because of an event in the Hall.

Armed Forces Golf day

Roll up roll up all you golfers!! On Monday, **June 25th** on the **Waterloo Course** at **Sherfield Oaks** has been booked for the RBL to run another Poppy Appeal fund raising golf day.

The cost for the day has decreased from the past three years, now being **£42 per person** (£168 team of four) and this includes a donation to the Poppy Appeal. Cost for members will be £22.50. Please ask me, **Rick Bourne** for an **entry form** on **07714 289157** or via e-mail on **rbourne@glenair.co.uk** or by collecting a form from the RBL bar. **CLOSING DATE IS 18TH JUNE!!**

The World Cup

The RBL will be showing all the games from this years tournament starting June 14th so come down and support our team with a beer and good company. Come on England!!!

Carnival Skittles.

The annual tournament will be held on three nights, **Tuesdays, May 29th, June 5th and 13th**. By the time you read this it will be too late to enter but come down to the Hall anyway from **7.30pm onward** for evenings of fun, mischief and drama.

Dads and Lads survival day

A big 'well done' is due to all those that took part in the inaugural running of this event back in April around the fields surrounding the RBL. Great fun was had by all and thanks should not only go to the club for supporting the event but to especially Liz and 'Woody' Woods for organising and running it so brilliantly.

Rick Bourne and Tracey Merritt on behalf of Old Basing RBL

RBL WOMEN'S SECTION

On **June 21st** at **7.30pm** there will be a **General Meeting** at The Royal British Legion in the Jack Morris Hall. The competition this month is : A posy of flowers up to 12" tall including vase. Many thanks

Sue Wilson

IVY CLUB

The Ivy Club are having their annual seaside trip on **Tuesday, 3rd July to Weymouth**, all are welcome, but book early as seats are allocated to members first. The cost is **£14.00 per head**, which includes all gratuities, and you can book your seat by calling in to The Ivy Club on a **Wednesday** afternoon at The RBL, we are open from **1.30pm** until **4.00pm**. and you are welcome to stay for a cup of tea and a chat. **Pick up points** will be **The Co-Op, Belle Vue Road Play area, The RBL** as well as **Oakfields**, starting at **9.00am**. Look forward to seeing you all.

Sue Wilson - Chairman

JUNE IN YOUR GARDEN

We often think of summer as a month when food is abundant, and indeed it can be! Gooseberries, lettuces, radishes and early potatoes are ready to crop now if planted early enough (approximately 100 days from planting to harvesting). However, June can also be a bizarre barren month, especially for our pollinating friends, the honeybee. There is a surprisingly dearth of flowers in June, which can catch out some hives, causing them to starve. Plant hardy geraniums and Oriental poppies to plug the June gap next year.

As well as the June gap, we can also experience the “June drop”. Fruiting trees often abort a number of their produce at an early stage to concentrate on producing a better quality of crop. Occasionally, as seems to be the case with my “ancient” apple tree, 90%! If you have a mature tree and seem to have an abundance of developing fruits, you may want to consider thinning out yourself, to avoid a large, but inferior harvest.

Perhaps one thing we are hoping for a lack of this month is rain! Of course I have my fingers crossed too, as it is nice to actually get out and enjoy the garden, but we then have the double-edged sword of having to take over watering duties. Remember it is better to water thoroughly once or twice a week than little and often. Thorough watering supports plants for 14 days, but merely wetting the surface wastes water, encourages weeds and can lead to surface rooting making the plants more vulnerable. To conserve water, water the soil rather than the plants, making ponds around individual plants so that the water can really soak in. If you have hanging baskets and containers, be prepared to keep a close watch on them, as they may need watering every day, maybe even twice a day if it is exceptionally hot and windy. If yours are already dry, rehydrate the compost by plunging the whole thing in water for an hour or so. If you have newly planted trees and shrubs, ensure they are kept well watered too. If you use a water butt this may soon run dry. Get into the habit of using washing up water and even your bath water if not too dirty, greasy or filled with detergents. Continued use of tap water can build up the alkaline levels, which some plants may not thank you for! Or if you want a little less work watering, you can eat the drought and plant some ground-cover plants for years of easy-maintenance colour.

In drought conditions, mower blades ought to be set higher to reduce the stress on the grass. Lawns are surprisingly drought tolerant, and usually recover well in the autumn rains, even if they have been brown and parched most of the summer. Lawn irrigation should rarely be required, if at all, to keep the grass healthy. However, water lawns during hot weather, if newly seeded or turfed lawns

The birds will also be stressed without a ready supply of water, so please keep your birdbaths topped up with clean rainwater regularly. Compost heaps can soon dry out, which will slow the decomposition rate. If you put your hand in the middle of the heap and take a handful out, you should be just able to squeeze one drop of moisture out of it in theory. In practice just keep it covered with old carpet, cardboard or something like that, water it once a week in dry spells and make sure you have a good mix of green waste, and papery waste such a newspaper, to soak up and retain the moisture. Many gardens have areas, which are a little too dry for most plants; however, there are plants such as lavenders, geraniums and petunias, which grow naturally in dry situations.

Of course, all this is wishful thinking. We may well possibly have the wettest June on record! If we do don't worry, remember the old saying: “A dripping June, sets all in tune!” and take whatever comfort you can get from that.

NATURE NOTES FOR JUNE

What a difference a couple of weeks make. Pouring rain and icy winds well into April then Mediterranean temperatures last weekend meant that the gloom lifted and it was a sheer delight to be able to get outside. Suddenly there were flowers, butterflies, bird song and oodles of white flesh as everything emerged from its winter hibernation!

This late Spring though has slowed the influx of migrants and only one other report of a Swallow this year, that from David Roche at Lower Mill Farm who had been previously concerned about the no-show of his regular barn nesters. They turned up about 10 days later than usual thankfully, as did a Cuckoo, heard by Margaret Chewter down by the Huish Lane stream.

The sights and sounds of our favourite summer birds is becoming rarer and I personally haven't been aware of any this year. I am very pleased though to report success for a pair of Dunnocks that nested close by, raising 4 chicks that have been fidgeting around the garden since they left their nest Monday last. These little brown birds always look as if they are wound up by clockwork such is their jerky movement as they search for food morsels in the grass and borders. No such luck though for the Robins, who once again abandoned their newly hatched young in an open fronted nest box located near to the Dunnocks nest. It could be that the close proximity and greater activity spooked them so that was a sad loss.

Oddest observation this month or perhaps this year was by Oliver Leavey, that being a Rhea seen wandering around a field near RAF Odiham. Four got loose from the Winchester area a decade ago apparently so one assumes this is one of them still living it up on the loose. Anyway it was catching the attention of a number of motorists so was a bit of a distraction along a winding road.

Jill Eckersley in Cavalier Road, unlike a lot of people, seemed unperturbed when uncovering a Grass Snake enjoying the sun at her pond edge this week. A metre long reptile is entitled to spook most people but Jill calmly got her camera out and snapped the beastie as it moved off. These shots are on Basinga Extra. A Common or Viparious Lizard which was once a very well distributed creature around the village was spotted by Phil Males, basking near the railway embankment in Swing Swang Lane. In emergencies these lizards shed their tails to escape a predator and the photo from Phil, named Stumpy, described exactly what must have happened to this one at some point.

Finally, every year I get more than one person reporting that ducks have nested or are just hanging around their garden. Amongst the lucky ones this year was Viv Boyns in Cavalier Road who for two weeks wondered just what the pair of Mallards were up to. Nothing as it turned out, no nest, no babies so let's say they just loved her company! Photo on Basinga Extra. Don't forget to send all your nature related photos to naturenotes@basinga.org.uk

Richard Bourne Tel: **01256 321108** E-mail: rbourne@glenair.co.uk

For 'Bird Drop-ins', use answer-phone **01256 842722**

NEWNHAM OPEN GARDENS

Come and see some of our lovely village gardens in Newnham on Sunday, 17th June between 1:30pm and 5.00pm. In addition to a wide range of gardens to view, we have our plant stall. Homemade cakes and teas will be available at the beautiful Manor Farm barn to complete the afternoon! Tickets will be available from our information tent on the village green and parking clearly marked from here. There is an entrance fee.

DIARY DATES FOR JUNE

(For details of services and events at St. Mary's and Methodist Churches please see p23)

Fri 1	10.30pm – 10.00pm	Ladies First Friday Coffee. 7 Oliver's Walk, Lychpit
Sat 2	10.00am – 1.00pm	PIOCC. Meet in Church Lobby.
Sun 3	10.30am – noon	OBAGS shop open in Riley Lane, opp Bolton Arms
Tue 5	7.30pm –	Old Basing WI. Meet in Parish Rooms.
	7.30pm –	Carnival Skittles. Royal British Legion
Wed 6	10.00am – noon	Civil Service Retirement Fellowship. Paul Whittle on Traveller's Tales at Brookvale Village Hall
Sun 10	2.00pm –	Sunflower Service at St Michael's Hospice garden. See p24
	6.00pm	LAST DAY FOR COPY FOR JULY BASINGA see page 3
Wed 13	7.30pm –	Carnival Skittles. Royal British Legion
	7.45pm –	BDRS. "The Severn Railway Bridge Disaster of 1960" at Wote Street Club.
Thu 14	7.45pm – for 8.00	RBL Monthly Branch Meeting, Jack Morris Hall.
Sat 16		Old Basing Carnival
Sun 17	10.30am – noon	OBAGS shop open in Riley Lane, opposite Bolton Arms
	1.30pm – 5.00pm	Newnham Open Gardens. Entrance fee payable
Thu 21	5.00pm – for 6.00	Basing House, A Midsummer Night's Dream
	7.30pm –	RBL Women's Section. General Meeting, Jack Morris Hall
Mon 25	8.00am –	Armed Forces Golf Day, Sherfield Oaks. See p35
	8.00pm –	Duke of Edinburgh Recruitment at The Beddington Centre, Riley Lane, opposite Boulton Arms.
Wed 27	7.45pm –	BDRS. "The River Kwai Railway - the true story" at The Wote Street Club.
Thu 28	2.00pm – 4.00pm	PIOCC. Meet in Church Lobby.

BASINGA EXTRA

Articles, letters and fuller versions of some magazine content can be found in our on-line magazine Basinga Extra at www.basinga.org.uk

Basingstoke Discovery Centre

Sunflower Service - St Michael's Hospice

Linguatastic Ltd

Big Wheel 26 - St Michael's Hospice

Hampshire Cultural Trust

The Vine, National Trust House

Hampshire & Isle of Wight Wildlife Trust

Probus

Basingstoke and District Railway Society

Lions Club

Blues Club

Concert Band

OLD BASING VILLAGE HALL

Whatever your function needs your village Hall can meet them.

It is already being used for most indoor sports and leisure activities, corporate functions, private parties, shows and dances.

Facilities include a large multi-function hall with stage and kitchen.

There is also the **FRANK GODDARD ROOM**

A custom built meeting room, which can be adapted for most requirements.

*Don't forget hirers who live in the parish get a cheaper rate. So ring **Sandie Rice** on **07544289932***



Health & Beauty

Based in Lychpit

Full range of beauty treatments at highly competitive prices in a friendly and relaxed atmosphere

GIFT VOUCHERS AVAILABLE

Call Linda on 01256 363354 or 07798 608297
email: linda@bodywisehealth.co.uk

Or visit www.bodywisehealth.co.uk for a full list of treatments

Alexim Construction Ltd

Local company with all your construction requirements in one place.

Extensions Garage Conversions
Landscaping Patios Block paving
Renovations Structural alterations

T. 01256 700424 M. 07900894702
E-mail: enquiries@alexim.co.uk
www.aleximconstruction.co.uk



Accountancy and Tax Services for small Businesses and Taxpayers

- Business accounts and Tax filing
- Personal Tax Returns
- Book-Keeping/Payroll/CIS/VAT
- Business start up advice and support

Ring Steve Rayner:
01256 471284

Email: SteveRayner@taxassist.co.uk
44b Hackwood Road Basingstoke
RG21 3AE

www.taxassist.co.uk/basingstoke

Spencer & Peyton Ltd

Established 1961

3rd Generation family owned and run Funeral Directors and Monumental Masons

24 Hours

Our family serving your family for over 55 years

380 Worting Road
Basingstoke, RG22 5DZ
01256 323165

(Flower Girl Florist on site)

7 London Road
Hook, RG27 9DY
01256 761717

Trading Standards approved

Pre-paid funeral plans discussed without obligation

spencerandpeyton@btconnect.com
www.spencerandpeyton.co.uk

69A THE STREET OLD BASING BASINGSTOKE HAMPSHIRE RG24 7BY

01256 841381

KEVIN
MURPHY
SESSION
SALON

THE TOPIARY

HAIR · BEAUTY · BARBERS

Visit thetopiarysalon.co.uk to view price lists and available treatments.

Sun & Mon CLOSED // Tuesday 9 - 6 // Wednesday 9 - 7 // Thursday 9 - 8 // Friday 9 - 8 // Saturday 9 - 5



A new beauty
experience in Old
Basing.

CALL 01256 841381
to book

YOU CAN NOW BOOK ALL
SERVICES VIA FACEBOOK

f t i g thetopiarysalon



BACKSTAGE BARBERS

WALK-IN BARBER PRICES

Haircut	£16
Wash & cut	£19
Buzz	£9
Skin fade	£25
Beard trim	£3
Beard & line up	£5
Cut throat shave	
	Price on application
Children 0-4 yrs	£10
5-11yrs	£12

OLD BASING BOILER SERVICES

Keeping you Gas Safe

Bill Martin

t. 01256 819521

m. 07990 514472

7 Blenheim Road, Old Basing, RG24 7HW

www.ldbasingboilerservices.com



Fabio and Kat have moved
to their new Dental Centre

Call for a free of
charge consultation

•IMPLANTS •DENTURES
•CROWNS & BRIDGES
•HYGIENE •WHITENING

New patients are welcome

Implant Dental Centre
Denture Studio
and Dental Laboratory



The Loddon Business Centre,
Unit Q, Roentgen Road, Basingstoke, RG24 8NG
www.italdent.co.uk tel. 01256 355 268

The Complete Tree Service

- Residential & commercial work
- Tree removal, thinning & lifting
- Stump removal, scrub
clearance & hedge trimming

Over 25 years experience -
fully trained, insured & certified.

We guarantee we can help.
Call for professional, friendly advice.



Teams all over Hampshire, Surrey,
Sussex and the South:

01256 763 162

www.cedardale.co.uk

Checkatrade.com
Where reputation matters



S. M. DECORATORS

*Interior & Exterior
Prompt & Efficient Service
Competitive Prices
Fully Insured Company
Over 25 Years Experience
Skim Plastering and
Paperhanging Specialists
City & Guilds Qualified
All Work Guaranteed
For Your
Free Estimate Or Advice
Please call Steve on
01256 811929*

R.T. MITCHELL & SONS BUILDING CONTRACTORS

Est. in Old Basing 1972

HOUSES

EXTENSIONS

GARAGES

LOFT CONVERSIONS

ALTERATIONS

RESTORATION OF LISTED BUILDINGS

Tel: 01256 352225

www.rtmitchellandsons.co.uk



Brackenwood

IMPROVING HOMES SINCE 1987

STYLISH. WARM. SAFE. SECURE.

WINDOWS

DOORS

CONSERVATORIES

ORANGERIES & LOGGIAS

ROOFLINE & FLAT ROOFS

BRACKENWOOD HOUSE | KIMBELL ROAD
BASINGSTOKE RG22 4AT | TEL 0800 25 35 45

SHOWROOM OPEN
MONDAY to SATURDAY 9am-5pm
SUNDAY 10am-4pm



www.brackenwood.com

● BASINGA

EDITOR: Colin Follett: editor@basinga.org.uk

Tel: 07970
868066

ADVERTISING: advertising@basinga.org.uk

SECRETARY: Graham Merry, 40 Linden Avenue Old Basing RG247HS

Tel: 463908

TREASURER: Anne Taylor, 15 Hatch Lane, Old Basing.RG247EA

Tel: 331344

DISTRIBUTION:

Old Basing Area: Jenny Harris, 40 Milkingpen Lane, Old Basing.RG247DL

Tel: 462280

Lychpit Area: Andree McLean 6 Pimpernel Way, Lychpit.RG248SS

Tel: 819006

BASINGA EXTRA WEBMASTER: Kevin Curtis, 49 Linden Avenue, Old Basing. Tel: 326789

● OLD BASING & LYCHPIT PARISH COUNCIL

CLERK: Sandra Tuck.

Tel: 462847

OFFICE AND HOURS: The Pavilion, The Recreation Ground.

Mon. to Thur. 10.00am to noon.

● CHURCH INFORMATION FOR THE AREA

Church of England (Parish of Old Basing & Lychpit).

VICAR: Rev Alec Battey, The Vicarage, Church Lane, Old Basing

Tel: 354707

ASSISTANT CURATE:

ADMINISTRATOR: Debbie Filer

Tel: 07541
698235

CHURCHWARDENS: Tricia Renwick
Ian Kershaw

Tel: 326155
Tel: 355500

Regular Services at St. Mary's Church, Old Basing.

SUNDAY: 8am Holy Communion. 9.30am Sung Eucharist and Junior Church

Evening Service 5.30 pm.

OTHER DAYS: Wednesday 10am Holy Communion.

Changes to the regular service pattern and other weekday services are shown in the weekly news-sheet, a copy of which is displayed on the noticeboard in the church porch

Old Basing Methodist Church

MINISTER: Rev Alison Parker alison.m.parker@googlemail.com

SUNDAY SERVICE: 10.30am Morning Service

Tel: 465064

Roman Catholic

PRIEST: Fr Christopher Rutledge.

St Bede's Church, Popley Way, Basingstoke.

Tel: 465214

SUNDAY MASSES: 9.00 am, 11.00 am and 6.30 pm

need a **painter** and **decorator**?

- professional
 - friendly
 - affordable
- 
- experienced
 - reliable
 - fully insured

call us today for a free no obligation quote

01256 334852 07919 358050

pscdecoratingservices@gmail.com

Infinite Harmony Yoga

Stretch & Flex

Sunday's 9.30am in Lychpit Community Hall.

Gentle yoga

Tuesday's 6.15pm in St Mary's Church Room.

Relax & De-stress

Tuesday's 7.15pm in St Mary's Church Room.

Contact Vicky on 01256 910108 or

vicky@infiniteharmony.co.uk

booking essential.

www.infiniteharmony.co.uk



Tree Surgeon

01256 763859

07766 256788

TreeSceneArb@gmail.com



TREE SCENE

ARBORICULTURE

Adrian Stanley

BSc(Hon) AA Tech Cert

Qualified & experienced
arborist

- All aspects of tree work & stump grinding
- Fully insured (£5m) - free estimates
- Logs supplied

Basing Electrical Ltd

For all your electrical needs. Both in and outside your home.

Part P Approved NIC EIC Registered

Call John on 07793748360

No call out charge. Reasonable rates.



NJP Heating Services

Tel: **01256 336940**

Mob: **07717 741999**

Boiler installations

Power flush heating systems

Harvey water softeners installed

Vented/Unvented cylinders installed



www.njpheating.com

Trading Standards Approved Free estimates and no call out charge

Proud to be supporting businesses and organisations in the Basingstoke and surrounding areas for 22 years



Your local one-stop provider of professional marketing & design support and graphic communication materials.



ISO12647



Trusted
Business

100%
of customers surveyed would
recommend Greenhouse

greenhouse
Marketing | Design | Production

Call 01256 880770 www.greenhousegraphics.co.uk