

June 2020

# BASINGA



Chris Hawkins



**Old Basing and Lychpit Parish Magazine**  
[www.basinga.org.uk](http://www.basinga.org.uk)

Proud to be supporting businesses and organisations in the Basingstoke and surrounding areas for 22 years



The background image shows a penguin walking on a sandy beach with waves in the background. Overlaid on the right side is a green spiral graphic that expands outwards. Inside the spiral, from the center outwards, are the following text labels: "office interiors", "signage & graphics", "marketing consultancy", "printing services", "design & branding", and "event branding & exhibitions". At the very center of the spiral is a small green leaf icon. To the right of the spiral, the text "innovative, responsive & professional" is written in a curved path following the spiral's edge.

Your local one-stop provider of professional marketing & design support and graphic communication materials.



ISO12647



Trusted  
Business

**100%**  
of customers surveyed would  
recommend Greenhouse

**greenhouse**  
Marketing | Design | Production

Call 01256 880770 [www.greenhousegraphics.co.uk](http://www.greenhousegraphics.co.uk)

## JUNE NOTES AND NEWS

The beautiful cover photograph this month is by Chris Hawkins and called 'St. Mary's Sunset'. There have been some spectacular evenings following the many sunny days since lockdown; we've been very fortunate with the weather this last couple of months. Because of Covid-19 we will continue to publish this magazine on-line on our website at: **www.basinga.org.uk**. For coronavirus help and support into the future please visit pages 30,32 and 35. Page 10 has up-to-date information about local shop opening times and sources of comfort from our many pubs and take-aways in the village.

We are pleased to welcome a new feature; recipes. A quiche on page 4 and chutney and jam recipes on page 39. The **Beddington Centre** is in need of a new Chairperson; see page 30. Unsurprisingly, there isn't much going on at the moment so no Diary page but plenty of gardening advice on pages 21 and 25, and more photographs in this edition.

## CONTRIBUTIONS TO THE BASINGA

We welcome both regular and occasional items for the Basinga. The very last date for copy to the Editor for the **July edition** is **6.00pm on Wednesday, 10th June**. Please use the forms on the Basinga website: **www.basinga.org.uk** to get your dates, articles and letters to us (*see box on page 15 for further instructions*). All **advertising** enquiries – classified, free adverts or inserts (flyers) can also be made via the **Basinga** website. Don't forget that we only accept articles with about a **300 word maximum**.

## PHOTOS FOR THE BASINGA

If any reader would like to offer a **photograph of the village environment** we would be happy to receive them, either for immediate use or to build up a portfolio of 'village views' that we can use when appropriate. We now have a web form that you can use to send a photograph for the website archive and possible use in the magazine. Go to **www.basinga.org.uk** where the form can be found on the '**Contributors Submission**' drop-down menu. Should you wish to submit multiple or a series of photos they can be emailed but please read the instructions on the photo form for details. This feature should **NOT** be used for Free Ads or Article photos, which can be attached to their own forms. In the same way your club and organisation logos can be sent to us to use alongside your articles.

## SITUATIONS VACANT - HELP NEEDED

We have a number of vacancies on our voluntary team and are looking for committed individuals to carry on the production of the village magazine.

Our **Webmaster** will shortly be stepping down from **Basinga Extra**, leaving a vacancy for a capable IT person to manage the Basinga Website and photograph archive. We need someone with general IT skills and in particular, experience with **Wordpress**, which is the application we use to support our website. If you think that this might be you, please get in touch with **editor@basinga.org.uk**



Again, we have been unable to continue with our usual monthly activities, but we have managed to keep in touch with all our Members by way of our monthly Newsletter which goes out by email, as well as sharing photos and general chat on our popular WhatsApp group.

For those Members who are not on email, the Committee have also made phone calls, or visits from a safe distance to maintain contact.

Readers may be interested to know that in April we took delivery of our very own "WI Standard". We have been invited to join in the Remembrance Day parade in November for the last two years but we felt that we were "a bit out of it" as we didn't have our own flag and therefore people might not know who we were! This has now been remedied and, although we were hoping to give the flag its first proper outing at the carnival, it will now be on show at the 2020 Remembrance Day march through the Village. Thanks to our Members for their fundraising efforts to help meet the purchase costs.

If any Member would like to join the **WhatsApp group** then please contact our President. All you need is a Smart phone!

Details of how the WI in Hampshire is dealing with the current situation can be found at **[www.hampshirewi.org.uk](http://www.hampshirewi.org.uk)**. I will contact members when we are able to re-start and at that time, we will be able to welcome any new members who wish to join us.

**Linda Frawley**

### MARCIA'S QUICHE RECIPE

I used 10 inch Flan Dish, measured across the top, Oven Temperature 180 degrees (for fan oven).

#### Ingredients

x1 shortcrust pastry sheet	Half a medium onion	260 gm of nice ham
200 gm of Cheese grated	150 ml of single cream	x4 medium eggs
Sliced tomatoes	For the Top	50 gm of tasty cheese grated

#### Method

Grease flan dish and cook pastry sheet according to manufacturers instructions, not forgetting to bake blind

Finely dice onion and cook in microwave, with a little butter, until softened, about a minute

Chop ham

Put all ingredients into a large bowl and mix together, add to flan dish and spread evenly

Decorate top with sliced tomatoes and grated cheese

Put in the oven on the middle shelf for and cook for 45 to 50 minutes, making sure it's cooked before you take it out



**More WI Recipes can be found on page 39**



DO YOU HAVE A WILL IN PLACE?



CLARKE  
& SON  
SOLICITORS

A Will is quite possibly one of the most important documents you will ever sign.

Call now to book a free Will healthcheck or to start the process of making your Will.

Clarke & Son Solicitors LLP

Manor House 8 Winchester Road Basingstoke Hampshire RG21 8UG

T: 01256 320555

[www.clarkeandson.co.uk](http://www.clarkeandson.co.uk)

**M MARTIN**  
**MATTHEWSON**

Call Us:  
**01256 364753**

**ALL MAKES SERVICING & REPAIRS**  
**THE VOLVO & NISSAN SPECIALISTS**



**MOT TEST  
CENTRE**



Visit: [www.garagebasingstoke.co.uk](http://www.garagebasingstoke.co.uk)

**FREE Local Collection & Delivery** T&C's Apply



Unit 1 Pensell Farm, Farleigh Road, Cliddesden, Basingstoke, Hants. RG25 9A

[www.basingtutors.com](http://www.basingtutors.com)

## Basing Tutors

- One-to-One Tuition
- Friendly, personal approach
- Professional tutors

Full diagnostic assessment  
with no further obligation

Initial consultation  
free of charge

Tel: **01256 470948**

Email: [admin@basingtutors.com](mailto:admin@basingtutors.com)

**Local  
Tutors  
For Local  
People**



# 20% OFF

**selected products**  
**offer exclusively for**  
**Basinga readers**

(With this advert. New orders only)

Visit Basingstoke's most recommended bathroom  
& kitchen supplier and installer... [Checkatrade.com](http://Checkatrade.com)

## A1 Bathrooms & Kitchens

- Fully employed fitters
- 24/7 Emergency callout
- Project managed installation
- Comprehensive insurance
- 4 year labour guarantee



[Checkatrade.com](http://Checkatrade.com)

Ask to speak to any of our customers!

**Your Dream, Our Creation**

[www.a1bathrooms.co.uk](http://www.a1bathrooms.co.uk)

SHOWROOM: Unit 3, Cartel Business Centre, Stroudley Road, Basingstoke RG24 8FW T: **01256 810460**

# OLD BASING BOILER SERVICES



Boiler Installations

Servicing and Repairs

Unvented/Vented Cylinders

Power Flushing  
of Heating Systems

Free Estimates

No Call Out Charge

Landlord Certificates

Fully Insured

01256819521 **Bill Martin** 07990514472

[www.oldbasingboilerservices.com](http://www.oldbasingboilerservices.com)

*Keeping you Gas Safe*



**CONTACT BASINGSTOKE  
01256 325575 ANYTIME**

**ARE YOU A WORKING WIFE?  
AND TIRED OF COPING WITH THE HOUSEWORK?**

**WE PROVIDE**

REGULAR/HOUSE MOVE/END OF TENANCY CLEANS  
IRONING, OVENS AND CARPET CLEANING  
OVER 25 YEARS IN BASINGSTOKE



RING US TODAY FOR A FREE BROCHURE  
**01256 325575**



## CHEQUERS

Independent Estate Agents



**Thinking of Selling in Old Basing/  
Lychpit in 2020 or on the market  
without results\*?**

**Choose an agent one step ahead of the rest...**

**Call 01256 810018  
and we'll get you moving**

*successfully selling property for over 28 years....*

[www.chequersstateagents.co.uk](http://www.chequersstateagents.co.uk)

T 01256 810018 E [sales@chequersstateagents.co.uk](mailto:sales@chequersstateagents.co.uk)

\*If you have instructed another agent or a sole agency and/or sole selling rights basis, the terms of these instructions must be complied with to avoid a possible liability to pay fees to commission.

### **CORONAVIRUS (COVID-19) CRISIS**

By the time you read this it is likely that lockdown measures will have been relaxed to a certain extent although our office staff are expecting to continue working from home for a while longer. This has not prevented us from managing day-to-day business and residents can email or telephone with any queries or issues they wish to raise.

The Parish Council held its first meeting via Zoom in May and this proved to be a successful alternative to a face to face meeting. **Agendas for future meetings will be published on our website and notice boards in the usual way and give full details of how residents can “attend” these virtual meetings.**

### **AUCTION OF PARCELS OF LAND AT LYCHPIT**

One of the issues discussed at the May Parish Council meeting was the proposed auction on 21st May of two parcels of land mainly consisting of footpaths, one around Broadhurst Grove and the other around Clover Fields. Although not on the Agenda this was brought to our attention and was of sufficient concern to be raised as a Chairman's Item to ensure all Councillors were aware. Unfortunately, there is very little the Parish Council can do in such circumstances, but County Councillor Elaine Still who was present at the meeting reported that she had alerted the Hampshire County Council legal team who would be writing to the auctioneers making them aware of various rights of access over the footpaths which it was hoped would make this less attractive to a potential purchaser. We understand a similar situation had arisen in Minden Close, Chineham with the land subsequently withdrawn from auction. At the time of writing the auction has still to take place but the outcome will be known by the time this article is published.

### **RESURFACING WORKS**

Anyone walking to or past the recreation ground will have noticed that the planned resurfacing works to the footpath, driveway and parking bays has been completed on schedule. We were fortunate that the contractors were able to source supplies and continue working during the lockdown when all sports activities were suspended so very little disruption has been caused.

### **NEW COUNCILLORS**

With the addition of Kate Tuck to our ranks we now have ten Councillors leaving us with two vacancies. We would therefore welcome submissions for co-option from any resident who may be interested.

### **PARISH COUNCIL MEETINGS**

The next two meeting dates are **Tuesday, 2nd June** and **4th August starting at 7.30 pm** unless otherwise advised.

Parish Clerk: **Mrs Sandra Tuck**

Assistant Clerk: **Mrs Kate Hope**

Address: **The Pavilion, Recreation Ground,  
The Street, Old Basing, RG24 7DA.**

Telephone: **462847** Mobile: **07507 514498 (emergencies only)**

Office Hours: **Monday to Thursday 10.00am to noon**

Email: **clerk@oldbasing.gov.uk**. Website: **www.oldbasing.gov.uk**



## R.T. MITCHELL & SONS BUILDING CONTRACTORS

*Est. in Old Basing 1972*

HOUSES

EXTENSIONS

GARAGES

LOFT CONVERSIONS

ALTERATIONS

RESTORATION OF LISTED BUILDINGS

Tel: 01256 352225

[www.rtmitchellandsons.co.uk](http://www.rtmitchellandsons.co.uk)



## The Water Softener Specialists



- Manufacturing water softeners for over 30 years
- Latest non-electric block salt water softeners
- New installations & repairs
- Advanced technology water filters for pure drinking water
- No call-out charge
- Based in Hook

*Fitted, fully reconditioned water softeners from just £395 (includes warranty).*

**Tel: 01256 768171**

**Mobile: 07836 247694**

**[www.amsmayfair.co.uk](http://www.amsmayfair.co.uk)**



## MIKE'S GARDEN SERVICES

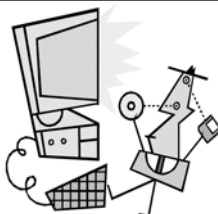
- General garden maintenance
- Landscaping and planting
- Garden clearances • Tree / hedge work
- Fence & shed work / treatments
- Lawn mowing • Turf laying
- No job too small • Fully insured
- Logs, Kindling and De-icer deliveries
- Free estimates • Competitive rates

**Tel: 01256 325015**

[mnm.chapman@talktalk.net](mailto:mnm.chapman@talktalk.net)

**[www.gardenerbasingstoke.com](http://www.gardenerbasingstoke.com)**

AFFORDABLE CARE & SUPPORT  
FOR ALL YOUR GARDEN NEEDS



## PC-fix-IT

Tel: 01256 474997  
or 07909 681606  
[www.pcfixit.co.uk](http://www.pcfixit.co.uk)

Repairs, Upgrades, Virus removal,  
Broadband, Internet, Wireless, etc.

*Reliable, experienced service.*



INTERIOR

EXTERIOR

## Painter's Pride



**EXPERIENCED HOUSEHOLD  
PAINTER & DECORATOR**

NO JOB TOO SMALL

**TEL: 01256 355356 or 07876 495657**



# World-Class Podiatry, Locally

## WHY see us?

We train to be the best we can be, so that we reach our potential and help you reach yours

## HOW do we do this?

By investing in world-class, cutting edge equipment and the latest evidence-based training for our TEAM

## WHAT does this mean for you?

Pro-active, forward-thinking and effective treatment in a welcoming and friendly environment

We combine our expert skills, our passion for seeing people at their best and our World-Class facilities and equipment to deliver excellence in Podiatric care

- Foot and leg pain
- Running injuries
- Hard Skin
- In-growing toenail management
- Video Gait Analysis using Optogait Technology
- Swift Verruca Treatment
- Shockwave Therapy for tendon injuries



To book an appointment to see a Podiatrist  
Call 0800 999 7337

OR visit  
[www.eclipsefootclinic.co.uk](http://www.eclipsefootclinic.co.uk)  
to book online

Visit us at Lychpit Surgery



Mention the code  
**BASINGA2** when  
booking your first  
appointment to  
receive a free gift!

## Transforming homes in Old Basing since 1996

Quote  
'BASINGA'  
for a preferential  
quote.



- ✓ Windows & Doors
- ✓ Conservatories & Orangeries
- ✓ Garage Doors
- ✓ Guaranteed Work
- ✓ Great Prices



Call 01256 841522

[riptonwindows.co.uk](http://riptonwindows.co.uk)

## LOCAL SHOPPING INFORMATION

Support our local shops, there is no reason, with the community's help, that anyone should be short of food in Old Basing and Lychpit.

If we have missed anyone out or the details have changed please let us know at [advertising@basinga.org.uk](mailto:advertising@basinga.org.uk)

**Oliver's Fish & Chip** shop is now offering a home delivery service to Old Basing and Lychpit areas of their full takeaway menu. **Open Wednesday to Saturday, noon to 8.00pm.** Deliveries every hour, last at **7.00pm. (Last Order by 6:45pm)** Except Friday when last delivery is **4.00pm.** Card payment will taken over the phone but cash payments are still accepted and arrangements will be made upon ordering. Call **01256 321018** to order. Free delivery for residents of Old Basing and Lychpit. For Takeaways see instruction at "Queue Here" window on arrival.

Visit: [www.olivers4fish.co.uk/](http://www.olivers4fish.co.uk/) for their menu.

**Old Basing Convenience Store** for the period of the emergency they will provide a home delivery service of essential goods to vulnerable residents who are in isolation in the Old Basing area. A minimum spend of £10 is required, deliveries, at no additional charge, taking place on Wednesdays, Fridays and Sundays. Telephone orders to Raj on **01256 464020** who will advise payment and arrangements for delivery. Contact can also be made via their Facebook page. Shop open **Monday to Saturday 7.30am to 5.30pm. Sunday 8.00am to 4.30pm.**

**The Bolton Arms** can deliver from their suppliers a wide range of products, from raw ingredients to toiletries and drinks (even alcohol !!!), plus their own Menu of Home Cooked foods. Open **Monday to Saturday, 5.00pm to 8.00pm, Sunday noon to 3.30pm** Please contact them with your requirements on [chef@thebolton.com](mailto:chef@thebolton.com) or **01256 819457** or **819555** (both have answer phones). Deliveries to vulnerable residents normally within 24 hrs.

**The Crown** is now providing a delivery service for produce and cooked food. Produce can be pre-ordered **Tuesday to Saturday 10.00am to 2.00pm. Takeaways** available **Thursday to Saturday 5.00pm to 9.00pm** and a **Sunday Roast noon to 5.00pm.** Orders can be placed on line at [thecrownoldbasing.square.site](http://thecrownoldbasing.square.site) where the produce available and menu can be found. You can of course always call them on **01256 321424.**

**Cromwell Indian Takeaway Lychpit:** Open for orders **5.30pm to 10.00pm, except Mondays** when closed. Delivery available. Telephone: **01256 476828**

**Old Basing Chinese Takeaway:** Now open **Monday to Saturday 5.00pm to 9.00pm.** Telephone: **01256 841818.**

**Co-Op Linden Avenue:** Open **9.00am to 8.00pm, 7 days a week** and from **8.00am to 9.00am** for elderly residents only. Telephone: **01256 362845**

**Tesco Express Lychpit;** Opening time are now **7.00am to 10.00pm.** Telephone: **0345 0269191**

**Day Lewis Pharmacy:** Open **9.00am to 6.00pm Monday to Friday** Closed **1.00pm to 2.00pm.** Telephone: **01256 477267.**

# The Barn Animal Hospital

The only Small Animal Hospital in the Basingstoke area.

Our friendly caring team welcomes new clients and their pets to our purpose-built veterinary hospital with 24 hour on-site nursing care.

- Vaccinations
- Puppy parties
- Pet passports
- Neutering
- Microchipping
- In-house laboratory
- Ultrasound, ECG
- X-ray & dental X-ray
- Endoscope
- Veterinary ambulance



W: [www.barnvets.co.uk](http://www.barnvets.co.uk)

T: 01256 329 522 E: [reception@barnvets.co.uk](mailto:reception@barnvets.co.uk)

A: Paynes Meadow, Lychpit, Basingstoke, RG24 8AD

## CONSIDER IT DONE!



## PAINTING & DECORATING HOUSEHOLD MAINTENANCE

**\*\* FULLY INSURED \*\***  
**\*\* HIGHLY EXPERIENCED PROFESSIONAL \*\***  
**\*\* DILIGENT & TRUSTWORTHY \*\***  
**\*\* REFERENCES AVAILABLE \*\***

Call Graham: 07494 294246

Email: [consideritdone.hampshire@gmail.com](mailto:consideritdone.hampshire@gmail.com)

Facebook: [www.facebook.com/consideritdone80](http://www.facebook.com/consideritdone80)

# Lamberts Plumbing Services

PLUMBING & HEATING CONTRACTORS

**BOILER INSTALLATION & SERVICING**

**BATHROOM INSTALLATION & TILING**

**GAS SAFETY INSPECTIONS**

**ALL ASPECTS OF MAINTENANCE REPAIRS**

**NO JOB TOO BIG OR SMALL**

Railside, Station Road, Hook, Hampshire RG27 9HT

Tel: 01256 783597 • Mobile: 07501 559668

Email: lamberts\_plumbers@yahoo.com www.lambertsinhook.co.uk



- Window Cleaning - sills/frames/doors + text alert eve before + convenient online payment
- Professionally Qualified Carpet Cleaning
- Driveway Cleaning and Restoration
- Gutters/Fascias/Soffits Cleared and Cleaned
- Roof Moss Removal and Cleaning
- Patio and Decking Cleaning and Treatments
- Conservatory Valets
- Steam Cleaning
- Softwashing

**Local | Experienced | Insured | Reliable**

Contact now for your FREE quote:  
**01256 973144**

info@cawleycleaningservices.co.uk

www.cawleycleaningservices.co.uk



facebook@cawleycleaningservices

**Start every  
day with  
a healthy  
smile**



**Local, friendly,  
professional  
dental surgery**

- High quality general dentistry
- Cosmetic dentistry
- Orthodontics
- Teeth whitening
- Implants
- Facial aesthetics
- Early morning, late evening and Saturday morning appointments
- Children seen free on NHS
- Reduced rates for 18-22 year olds
- Denplan

**Call 01256 840141**

www.guineacourtdental.co.uk

21-22 Guinea Court, Chineham, Basingstoke RG24 8XJ



**Guinea Court  
Dental Surgery**



### By Ben Nolan. Gym Manager, Beechdown Club

Most of us are used to training in a gym to keep fit, but our training shouldn't stop just because we no longer have access to weights and machines! Staying fit in quarantine doesn't have to be as hard, or as boring as you might think. There is a huge variety of exercises you could be doing daily, which will keep you fit, happy and healthy and certainly benefit you when you return to the gym.



You need to remember that when exercising, your body releases endorphins. This is often referred to as the 'feel good hormone'. It will boost mood, stop you from feeling as tired and stop you reaching for that sugary snack.

Plenty of people enjoy going for a walk or a run outside but there are also many other ways to exercise if these don't take your fancy.

This is a great opportunity for you to start taking part in sweaty HIIT sessions and get that blood pumping, train with bodyweight and focus on your technique and core work, get the children involved or why not try taking up yoga.

A statement that is commonly made to me is "I have always wanted to be able to do a push up", well now is a great time to practice and succeed. Body weight exercises are heavily underrated and all you need is 5 minutes a day to see massive progression over the coming weeks.

Below is a list from easy to hard push up variations to work through until you reach a full push up.

- Wall Push ups
- Incline push ups (Hands on a raised surface)
- Kneeling Push Up
- Full Push up
- Narrow Push up (Shoulder width)
- Diamond Push up



Complete 3 sets of 10 reps. If you fall short of the 10 reps, fall back to the next easier alternative to complete the reps. Take 60 seconds between each set to rest. Good luck!

Alongside this workout we have many more available on the Beechdown website or our Facebook page. In fact there are DAILY live-streamed classes from our instructors PLUS much more! Go check it out. Search for Beechdown Health Club on Facebook

# Looking for independent financial advice you can trust?

We'll help you create, increase and protect your wealth. Our personal service is designed to build a shared understanding of your wealth objectives and to translate these ambitions into reality.

To find out more, please call

## 01276 34932

**S4financial**  
SUPPORTING YOUR FINANCIAL LIFE



 01276 34932

 [www.s4financial.co.uk](http://www.s4financial.co.uk)

- \* Family Wealth Preservation
- \* Wealth Management
- \* Tax Planning
- \* Protection Planning
- \* Retirement Planning
- \* Mortgages

The value of investment can fall as well as rise. You may not get back what you invest. Your home may be repossessed if you do not keep up payments on your mortgage. There is normally a fee for advising on and/or arranging a mortgage, the precise amount will depend on your circumstances but we estimate that it will be £495.

**R.LOVELOCK**  
HEATING & PLUMBING

ALL ASPECTS OF PLUMBING  
INCLUDING

- BOILER FITTING • SERVICING & REPAIRS
- GENERAL PLUMBING

TEL: 01256 421138  
MOB: 07383 064464  
EMAIL: [contact@rlovelockheating.co.uk](mailto:contact@rlovelockheating.co.uk)



*lsc*  
LOUISE SANDERS  
OSTEOPATHS

Free car park  
Emergency appointments  
Home visits  
Free advice on rehabilitation  
Free advice on exercises  
Free ergonomics advice

## DO YOU SUFFER FROM.....

Back Pain, Sciatica,  
Headaches,  
Sports Injuries,  
Shoulder Problems  
Neck Pain, Joint Pain,  
Elbow & Wrist Problems,  
Muscular Strains

**PJH**  
Window Cleaning Services  
Local, reliable window cleaner  
For a free, no obligation quote for  
• Window cleaning • Facias  
• Gutters • Conservatory Roofs

Please call Pete on  
07762 616600  
e-mail: [pjhcleaning@gmail.com](mailto:pjhcleaning@gmail.com)

OLD BASING  
Old Basing Health Centre,  
Manor Lane  
Old Basing | Hampshire | RG24 7AE  
01256 868 370

## CLASSIFIED ADVERTISEMENTS



### **Piano Lessons**

All ages and abilities

Beginners welcome

Qualified and experienced teacher

Philippa Ford 01256 470174



### **Jane Stockdale**

#### **HOME COOKING FOR ALL OCCASIONS**

SPECIALISING IN CAKES & CANAPES

Tel. 01252 723161 / Mob. 07775 696918

### **PROFESSIONAL FOOT CARE IN THE COMFORT OF YOUR OWN HOME**

Fay Curtis MCFHP MAFHP, fully qualified Foot Health Practitioner offers a range of foot services including:

Toenail cutting, Nail condition treatments, Corn removal, Callus reduction, Dry and cracked heel remedies, Verruca treatment and Diabetic foot care.

To book an appointment call

Fay on 07780 664410

### **THE BEDDINGTON CENTRE CLEANER REQUIRED**

Based in Riley Lane Old Basing, needs a new professional cleaner. This work will entail between 2 to 3 hours per week, including windows and external shelter. The work will need to be carried out very late afternoon or evenings but there will be some flexibility to suit. Due to the current uncertainties the start date will be confirmed on application.

Contact [annie.dawson@hotmail.com](mailto:annie.dawson@hotmail.com)  
or [aandtsmee@gmail.com](mailto:aandtsmee@gmail.com)

### **BASINGA:**

We have vacant contract advertising space available for 2020, if you are interested contact the Advertising Manager on:  
[advertising@basinga.org.uk](mailto:advertising@basinga.org.uk)

*Submissions to the magazine and website can be made via [www.basinga.org.uk](http://www.basinga.org.uk) using the web forms:*

*Selection for Articles/Letters and Diary Dates will be found on the "Submissions" drop down and for Free and Concession Ads on the "Advertise with us" drop down. Paid advertising enquiries can also be made in the same way.*

*Submissions made via the forms now provide a common input for both the magazine and website and are automatically routed to the member of the team responsible for processing them. All submission must be received by the 10th of the month (6th in December) previous to the magazine issue month.*

*If you have trouble finding the forms, you can of course contact us and we will advise.*

*Our privacy Policy is available to read on the website which includes the new GDPR requirements for publishing photographs.*

*Contacts for general enquiries and assistance:*

*[advertising@basinga.org.uk](mailto:advertising@basinga.org.uk) or [editor@basinga.org.uk](mailto:editor@basinga.org.uk) or [webtech@basinga.org.uk](mailto:webtech@basinga.org.uk)*

*All Advertisements in the magazine and website are inserted in good faith and the Basinga Management Committee accepts no responsibility for any statement, omission or errors made by the advertisers; nor endorses the products or services advertised. The views and opinions expressed in the Basinga are those of the organisations, individuals and authors concerned and not necessarily those of the Basinga Management Committee.*

# brain chase coles

Solicitors

Look no further for your  
local legal experts



[www.brainchasecoles.co.uk](http://www.brainchasecoles.co.uk)

Tel: 01256 354481 | [enquiries@brainchasecoles.co.uk](mailto:enquiries@brainchasecoles.co.uk)

Property · Wills & Probate · Family Law · Family Mediation · Notary Public

Haymarket House, 20-24 Wote Street, Basingstoke, Hampshire RG21 7NL



**R.KNIGHT**  
**JCB & PLANT HIRE**

**All Ground Work Undertaken**

**Fencing & Tree Work**

Tel: 01256 324588

Mobile: 07703 458372

Groundworks | Footings | Driveways | Landscaping

## **W.T.HILL** **Painter & Decorator**

Internal & External

Domestic & Commercial

Over 30 Years Experience

Tel: 07748808069/01256 467901

Free Quotations

## **GARDEN SOLUTIONS** **NEIL INKLEY**

SPECIALIST IN FENCING, TURFING,  
PATIOS ALSO GENERAL GARDEN WORK  
including Lawns, Hedges, Clearance,  
and Pressure Cleaning

**Local References      Free Estimates**

01256 882108 or 07768 105488



## FREE ADS – BUY AND SELL

**Note:** All ads are processed in received date order. Ads not included this month will be entered in next issue, space permitting. If you do not want your ad to appear later contact the Advertising Manager. Ads also appear on the web site with photographs if available.

### **HAND WORKED TAPESTRY SCREEN**

**£ 25**

**01256324233**

Hand worked dark wood with solid back. Buyer collects, BACS payment only.

## CONCESSION ADVERTS – WHAT'S ON

**LADIES FIRST FRIDAY COFFEE MORNING:** I am sorry to let you know that due to the coronavirus we shall be unable to meet until the restrictions are lifted.

Sheila Stone. Tel 01256 350238

## ADVERTISERS NEWS

**Beechdown** are offering free online fitness classes, see advert on back page and article page 13.

**Many more of our advertisers are now open for business, please support them.**

## ROTARY IN LOCKDOWN

Zoom and other on-line communication tools have become essential parts of our lives over recent months. With embargoes on live meetings our Rotary Club, led by our younger members, embraced this modern technology and whilst at first somewhat tentative, we are now running our weekly club meetings and also a Saturday coffee morning on Zoom, as well as Board Meetings. This has meant that we have been able to carry on with all that Rotary does in supporting our charities. The unexpected bonus of this is that it has enabled us to keep our club fellowship and camaraderie, a very important part of being a Rotarian. We have maintained our friendships with our meetings, as ever, full of fun and humour along with the serious business.

Being a member of a Rotary Club has been a life line for us in these times

We still have guest speakers and members have organised Desert Island Discs and Room 101 sessions, it's amazing what we've learnt about each other

Rotarian Julian Ricketts has been entertaining us each Saturday evening with his Cocktail Master Classes on Facebook. Unfortunately you can't sample them but you can follow the class and make your own – and no need to worry about driving home!

**BASINGSTOKE FESTIVAL OF TRANSPORT RESCHEDULED for 13th SEPTEMBER 2020 in the Memorial Park 11.00am until 4.00pm.**

This is a free outdoor event and we are crossing our fingers and hoping that this great celebration of British life and engineering will give us all the lift we need as life returns to normality.

Check our Website and Social media for updates

## BEST OF FLOORING

Laying down a good reputation

Suppliers & Installers of:

- Wood Flooring
- Laminate Flooring
- Underfloor Heating
- Carpets & Vinyls
- Amtico

Home Sample Service Available  
Free Estimates & Expert Advice

Unit 3 Cufaude Business Park,  
Cufaude Lane, Bramley, Basingstoke, Hampshire RG26 5DL

Showroom Open Friday 10am-4pm, Saturday 10am-1pm

Tel: 01256 810327

[www.bestofflooring.co.uk](http://www.bestofflooring.co.uk)

Email: [sales@bestofflooring.co.uk](mailto:sales@bestofflooring.co.uk)

**Checkatrade.com**



**OVENCLEAN**  
The original oven cleaning specialists

Non-Caustic Fresh Solution Used Every Time  
Ovens ~ Hobs ~ Extractors  
Microwaves ~ Aga's ~ Ranges Cleaned

FOR A FREE NO OBLIGATION  
QUOTE PLEASE CALL

**01276 473118 - 07882 886736**  
[www.ovenclean.com](http://www.ovenclean.com)



DESIGN & BUILD, PLANTING, DECKING, FENCING  
TURFING, PATIOS, DRIVEWAYS & MAINTENANCE  
FULLY INSURED & CRB CHECKED

CONTACT JONATHAN FOR A FREE QUOTATION

**01256 412723 - 0771 7214521**

E: [info@jcooklandscapes.co.uk](mailto:info@jcooklandscapes.co.uk)

[www.jcooklandscapes.co.uk](http://www.jcooklandscapes.co.uk)

# B&M FENCING

## GARDEN & LANDSCAPE SUPPLIES

- |                     |                      |                    |
|---------------------|----------------------|--------------------|
| • Panels (3' - 6')  | • Reclaimed Sleepers | • Sharp Sand       |
| • Trellis           | • Softwood Sleepers  | • Building Sand    |
| • Concrete Post     | • Oak Sleepers       | • Ballast          |
| • Closeboard Panels | • Decking            | • Scalpings        |
| • Natural Sandstone | • Rolawn Turf        | • 10mm Gravel      |
| • Paving Slabs      | • Topsoil            | • 20mm Gravel      |
| • Block Paving      | • Landscape Bark     | • Decorative Stone |

Delivery Service Available

Mon-Fri  
7.45 - 5pm  
Sat 9am - 5pm

**01256 762739**

Fencing  
Fitting Service  
Free Estimates

[www.bmfencing.co.uk](http://www.bmfencing.co.uk)

Reading Road, Hook, Hants, RG27 9DB

[enquires@bmfencing.co.uk](mailto:enquires@bmfencing.co.uk)

May brought us plenty of Chiffchaffs, Blackcaps and the Lesser White Throat. During June we should see flowerings of the orchids (Common Spot and Pyramid, both a purple colour) and the Grass (pink) and Meadow (yellow) Vetchling. On warmer days butterflies

For those of you visiting the field, the latest sightings of all the flora and fauna (and there is a lot!) is listed on the Mill Field display board near the Little Basing entrance. Fabulous photos can also be seen on our Facebook page. As you can see from both we are so lucky to have such a rich nature reserve so it is important for all of us to stay on the paths to protect the wildlife.

Email: [millfieldoldbasing@yahoo.co.uk](mailto:millfieldoldbasing@yahoo.co.uk)

Facebook: **Mill Field Conservation Group**







**ST NICHOLAS' SCHOOL**

FLEET • HAMPSHIRE

An independent day school for boys aged 3-7 and girls aged 3-16

- Small class sizes
- Inspirational teachers
- A caring, family ethos
- Purpose-built facilities
- Outstanding results
- "Excellent" ISI Inspection
- School buses run from Alton, Bentley, Basingstoke, Bramley, Chineham, Hook, Old Basing, Odiham, Hartley Wintney, Fleet, Farnham, Rowledge, Yateley, Camberley, Farnborough and Aldershot

## Open Evening

**Wednesday 6th May 2020**

4.30pm – 7.30pm

## Year 3 & Reception Taster Day

**Friday 1st May 2020**

8.45am – 3.30pm

## Senior Taster Day (Year 7 2021)

**Thursday 14th May 2020**

8.45am – 3.30pm



T: 01252 850121 | E: registrar@st-nicholas.hants.sch.uk

@stnicholasschool | @stnicholasfleet

st-nicholas.hants.sch.uk

**Looking for a Letting Service from an Agent who cares?**  
**You'll find us on The Street**



**all**  
**aspects**  
LETTING  
SERVICES

**20% Discount with this advert**

**T: 01256 470411**

69A The Street, Old Basing RG24 7BY  
info@allaspectsettingservices.co.uk

Zoopla



PROPERTY MANAGEMENT • RELOCATION CONSULTANTS • INVENTORY SERVICES



## NATIONAL WOMEN'S REGISTER

NWR has groups across the UK that connect women who are interested in everything and talk about anything! We usually meet physically for lively discussions, to share ideas, meet other women and make new friends.

During lockdown members of Chineham and Old Basing NWR are maintaining our sanity by staying in touch via phone, WhatsApp, emails and Zoom.

Every Monday at 2.00pm we have a Zoom meeting when between 6 and 15 of us get together for exercise sessions, quizzes and generally keeping up with news. On 4th May we had a more serious meeting. Each of us researched a female artist (art in the widest form, not just paintings) and reported back to others. Our choices were very wide reflecting the different interests of our members from Yayoi Kusama to Elisabeth Vigee Le Brun.

NWR Headquarters are also embracing social media to keep our minds active, including a subscription to Digital Theatre Plus, National Quizzes via Zoom, as well as access to live speakers. For the quiz nearly 100 ladies from across the UK took part.

In April Ruth Badley, a successful journalist, a Food and Arts writer, a teacher who has worked internationally - notably with Vietnamese and Cambodian refugees and a PR and media consultant was the first live speaker.

In May Headquarters arranged for Ginny Davis, a writer and performer for theatre and a public speaker to treat us to a dramatic reading of her comedy 'Family Matters'.

If you want to keep your mind active during lockdown, or want to join our Group after lockdown has finished information can be found via [www.nwr.org.uk](http://www.nwr.org.uk) or contact Sandie ([sandra.tapping@gmail.com](mailto:sandra.tapping@gmail.com)); or Karen (01256 328488).

**Sandie Tapping**

## OLD BASING ALLOTMENT AND GARDEN SOCIETY

Hopefully you have all been able to enjoy your allotments and have been making the best of April and May's sunshine. The first allotment inspections of the year have been made. If you have been unable to tend to your allotment due to Covid or for other extenuating circumstances, please contact the Parish Council directly to explain your situation should the need occur and you receive a letter.

To minimise the spread of the virus, the shop and toilet will remain closed until further notice but keep an eye on the website and Facebook page and group for further information should the situation change.

If June is anything like the preceding months, then it would be prudent to install water butts if you haven't already done so to make the most of any rainfall that we do get. Tender plants such as squashes, sweetcorn and runner beans can be planted out without protection as the final frosts of the year should be behind us. Some of the berries should be cropping now, such as strawberries and gooseberries so they will need protection from birds. Keep on top of weeds and watering and start feeding grow bag tomatoes to get a bumper crop.

Stay safe and happy gardening! [www.obags.uk](http://www.obags.uk)

**Tracy Braybrook**

It is now a year since I moved into The Vicarage with Dominic and the children, and what a year it has been! Thank you to everyone in Old Basing and Lychpit for making us so welcome here, it is an absolutely wonderful community to be part of. The kindness of the people here has been evident since we arrived, and none more so than in the past few months, as we have pulled together to support friends and neighbours in need during this pandemic. There are several schemes operating across the parish and we continue to work with Basingstoke Voluntary Action and Basingstoke Council to be a local hub for collecting prescriptions and shopping for residents. If you need any help do let us know.

During my first year it has been wonderful to welcome so many of the community into church, whether that be on a Sunday morning, over the Christmas season, or for a wedding, baptism or funeral. The church building has been at the heart of the community for hundreds of years and generations of Christians and seekers have prayed in it. Being a Grade I listed building the church requires a lot of upkeep, and as many of you will have seen we had building works to repair the church over the winter months. We are fortunate that the building works finished just before lockdown.



I am aware how just how hard some of the community have found it to experience the temporary closure of the buildings. The loss of the sanctuary that it offers throughout the week, the opportunities missed to gather together and worship in person, rites of passage that are having to wait; there is a grief that is tangible as I speak with people.

And yet as Christians, we trust that God will guide us through our grief and inspire our hope. We know that God never promised us that life would be easy; but God does promise to be with us whatever we face. Our readings in Sunday Worship as lockdown began reminded us of God's presence with the Israelites during their forty years in exile travelling through the wilderness, and offered us encouragement as we left our building that God continues to journey with us. As we have prayed Morning Prayer each day, we have read the 23rd Psalm, 'The Lord is my Shepherd' reminding us that even as we travel through the darkest valleys God is with us, refreshing us and comforting us. It has been amazing to see how God has journeyed with us during this time, opening up our worship in people's homes, and welcoming those who previously were unable to come often to church. We look forward to when we can meet again in person, but it remains a privilege to continue to hold this community in prayer at this time, and to continue to live out our faith beyond the building. Over these coming months, I pray that you will know the love of God guiding you through these uncharted times.

With love,

*Reverend Heather*

## THIS MONTH AT ST MARY'S CHURCH



### ONLINE SERVICES

We are live-streaming some services through our Facebook page (St Mary's Old Basing and Lychpit), with all welcome to join these services whilst the church building is closed.

**Morning Prayer:**

**9.15am on Monday - Friday**

**Sunday Worship:**

**9.30am** (service sheet available on St Mary's website).

If you have a prayer request then please give Revd Heather a call or send a text to her mobile: **07745 731729**, email: **vicar@stmarysoldbasing.org.uk**

If you'd like to be added to our distribution list for Revd Heather's weekly message please email our Administrator, Debbie Filer: **admin@stmarysoldbasing.org.uk**.

### SUPPORT DURING THE CORONAVIRUS OUTBREAK

St Mary's is a local hub working with **Basingstoke Voluntary Action** and Basingstoke Council for those needing support at this time, whether that be in terms of practical help such as shopping and the collection of prescriptions or if you are feeling isolated and would welcome a friendly phone call. Please contact **Revd Heather** directly on **07745 731729** or email **basinghub@gmail.com**

### BASINGSTOKE FOODBANK - DONATION REQUEST

The Foodbank is facing a high level of demand and would appreciate any support that you can give in terms of donations. St Mary's continues to be a collection point for the Foodbank. Please leave items in the crate on the Vicarage porch (the Vicarage is located on the corner of Church Lane & Milking-pen Lane). There is also a collection box in Tesco at Chineham. For a list of items that are in particular short supply please visit the website: **www.basingstoke.foodbank.org.uk**

**God of compassion,  
be close to those who are ill, afraid or in isolation.  
In their loneliness, be their consolation;  
in their anxiety, be their hope;  
in their darkness, be their light;  
through him who suffered alone on the cross,  
but reigns with you in glory,  
Jesus Christ our Lord.  
Amen.**

## CHURCHYARD CONSERVATION GROUP (PIOCC)



All Working Parties are CANCELLED until further notice, due to Coronavirus. They will not resume until church services are once again permitted. We look forward to welcoming our volunteers once life returns to normal. Meanwhile we hope you and your families remain healthy. Thank you for your support.

Last month as the cowslips were starting to go over, we were delighted to see hundreds of yellow rattle seedlings germinating in the Central Glade of the Conservation Area. We have been trying to establish this species for many years. As it is semi-parasitic on grass, we hope it will help encourage the wild flowers by reducing the lush grass, so perhaps in these strange times we are at last succeeding.

As mid-summer approaches the summer flowers are now blooming while the birds continue to sing and butterflies flutter past our windows. We hope you will continue to enjoy watching the birds and flowers in your gardens or from your windows as the days lengthen and warm up. Take care and keep well.

For further information please ring **Fay Farrant** on **01256 476863**.

**Margaret Carr** [www.stmarysoldbasing.org.uk](http://www.stmarysoldbasing.org.uk)

## IVY MORRIS

It is with great sadness that we have learnt of the passing of Ivy Morris, a resident of Byfleet Avenue for 60 years, a loyal, long serving and much loved member of the Old Basing Royal British Legion Women's Section for many years and wife of the Branch's late elder statesman, Jack, after whom the RBL renamed their hall.

Ivy, who was 90 years of age, died in Basingstoke Hospital on Friday, 8th May after a short illness.

The family is planning a Memorial Service at St. Mary's Church whenever this might be possible to which everyone will be welcome. Meantime, donations in memory of Ivy can be made to Spencer and Peyton Funeral Directors and will be in aid of The Poppy Appeal.

We have extended our sincere condolences to Ivy's daughter Susan and all her family

## OLD BASING & LYCHPIT VILLAGE SHOW

The Village Show Committee continue to monitor the current situation in regard to holding the Village Show on **Sunday, September 6th** as usual this year. Do please continue to check the Village Show website, details below, for further updates. In the meantime do please grow and make all those wonderful exhibits that might grace the Village Hall in September, and, of course stay safe.

[www.oblvs.org.uk](http://www.oblvs.org.uk)

**Mark Offord**



# Berryford

Accountancy Services

## Do you need an accountant?

We offer an accountancy service for small businesses and individuals

Year End Accounts  
Bookkeeping  
VAT and Tax  
Personal Tax Returns

01256 472832 07790 948310

mike@berryford.co.uk

www.berryford.co.uk

## A. SEWELL

www.asewell.co.uk



### Lighting, Electrical & Audio Visual

All Lighting and Electrical work undertaken including:

- Security & Emergency Lighting
- Interior & Exterior Lighting Design & Installation
- TV, Telephone and Data Distribution
- Multi-room Audio/Visual
- Alarm Systems, CCTV & Door Access Systems
- Electrical Alterations & Re-wires



01256 329893

01252 844663



## Home Maintenance Services

Family Business • Fully Insured • Free Quotations

References by Request • 25 Years' Experience

### Jobs Undertaken

Fencing • Drylining/Studwalls • Painting/Decorating  
Laminate Flooring • 2nd Fix Carpentry • Plumbing • Tiling  
Fitting/Designing of Kitchens and Bathrooms

## Marcus Underdown

Property Maintenance Expert

01256 479327 • 07878 078135

mtunderdown@virginmedia.com

"We do anything from changing a tap to refurbishing your bathroom"

## OLD BASING VILLAGE HALL

*Whatever your function needs  
your  
Village Hall can meet them.*

Contact: Sandie Rice

Tel: 07544 289932

Email: bookings@oldbasingvillagehall.co.uk



## A-Foardable Domestics

WE REPAIR....

Washing Machines, Cookers, Dishwashers, Fridge Freezers,  
Ovens, Vacuum Cleaners & Tumble Dryers.

Repairing  
Since 1995

Low  
Pricing

Family  
Run

Qualified  
Engineers

Basingstoke  
Based

Call: 07891 465499 | Email: afdomestics@engineer.com  
Web: www.afdomestics.com



### Feel the buzz,

Bumblebees are one of our most familiar and endearing garden insects. Hearing their distinctive buzz and watching them dance from flower to flower epitomises a perfect summer's day and they are also vitally important pollinators.

Our top tips below should give you a helping hand to identify five of the most common bumblebees you might see this spring.

#### **White-tailed bumblebee**

The white-tailed bumblebee is a very common bumblebee that emerges early in the spring and can be seen right through to the autumn. It can be found in gardens, farmland, woodland edges, hedgerows and heathland: anywhere there are flowers to feed on. As the name suggests, it has a white tail as well as a yellow band on the thorax and on the abdomen. The markings are similar to those of other species, such as the buff-tailed bumblebee, so look for their bright white tail.

#### **Tree bumblebee**

The tree bumblebee is a relatively new arrival to the UK. First recorded here in 2001, it is slowly spreading north throughout the country. It nests in cavities such as bird nest holes in trees, bird boxes and roof spaces. The tree bumblebee visits a wide range of flowers, particularly those of soft fruits, such as raspberries and bramble, and shrubs. Tree bumblebees have a distinctive appearance with brown/orange hairs on the thorax, a black abdomen and white tail.

#### **Buff-tailed bumblebee**

As the name suggests, this bumblebee is named after the queen's buff-coloured tail. This common species is attracted to many types of flowers, though its short tongue means it dislikes deeper flowers. The queen, male and workers all have a yellow collar near the head and another on the abdomen. The queen and the males have an off-white/buff colour tail while the workers have a white tail with a faint buff line separating the tail from the rest of the abdomen.

#### **Red-tailed bumblebee**

Red-tailed bumblebees emerge in early spring and feed on flowers right through to the autumn. The female red-tailed bumblebee is a very large black bumblebee with a big red tail and pollen baskets on its hind legs that are fringed with black hairs.

#### **Common carder bee**

Common carder bees are medium-sized with a long tongue. They emerge in early spring and can be seen feeding on flowers right through to November. The workers visit a variety of flowers, especially legumes, thistles, knapweeds, brambles and comfrets. They nest in cavities, such as old mouse runs, in bird nests or in moss mats in lawns. They are social insects and their nests may contain up to 200 workers. The common carder bee is almost entirely brown and orange, sometimes displaying darker bands on the abdomen.



Find out more about helping your local bumblebees and how to identify them on the website at: [hiwwt.org.uk/wildlife-explorer](http://hiwwt.org.uk/wildlife-explorer)



**Lisa Ives** M.Ost PgCACE MSCCO  
GOsC Registered Osteopath  
**01256 316566**  
**07814 365523**

Back & Neck Pain/Ache  
Sporting Injuries  
Muscular Strains & Ligament Sprains  
Muscle Tension  
Sciatica  
Spasms  
Neuralgia & Fibromyalgia  
All Joint Pains  
Arthritic & Rheumatic Pain  
Structural & Cranial Osteopathy  
Ultrasound & Dry Needling

### Lisa Ives Osteopathy®

Grove House, Lutyens Close, Chineham Court,  
Basingstoke, HAMPSHIRE, RG24 8AG.

[www.lisaivesosteopathy.co.uk](http://www.lisaivesosteopathy.co.uk)  
[enquiries@lisaivesosteopathy.co.uk](mailto:enquiries@lisaivesosteopathy.co.uk)



**HeatOn**  
Gas & Heating Services™

**Installation, Service, Repairs**  
**Your local Gas & Heating Specialists**

- Boiler & Heating Breakdowns
- Smart Control Upgrades
- Heating & Boiler Installations
- Servicing

Even the small jobs:  
Repacing a Radiator, Thermostat  
or just fixing a leak.

Telephone 07925 665636  
[customer.services@heatonghs.co.uk](mailto:customer.services@heatonghs.co.uk)  
[www.heatonghs.co.uk](http://www.heatonghs.co.uk)



**Checkatrade.com**  
Where reputation matters



## BASING HOUSE RUINS AND GROUNDS

Plus museum, garden, activity trail, workshops,  
outdoor theatre, special events and more!



### THINGS TO DO

- Discover the Great Barn and spot the artillery damage still visible on its walls
- Explore the ruins and imagine what the house would have looked like
- Visit the walled garden and learn about Basing House's fascinating history in the museum
- Walk your dog or find a picnic spot

### INFORMATION

Pay once, visit all year! With your ticket, you can enjoy unlimited visits to Basing House and return as many times as you like for a whole year! See our website for full details, admission prices and opening times.

**Closed until further notice.**

**BASING HOUSE** | Barton's Lane | Basingstoke | Hampshire RG24 8AE  
Please call 01256 639550 or email [basings.house@hampshirculturaltrust.org.uk](mailto:basings.house@hampshirculturaltrust.org.uk)



[www.hampshireculture.org.uk/basing-house](http://www.hampshireculture.org.uk/basing-house)  
Hampshire Cultural Trust is a registered charity (no. 1154533) and company (no. 20162251) in England and Wales.

## MY FIRST MEETING AT THE PROBUS CLUB



I arrived at the meeting venue in good time so as not to make a poor impression had I been late. Fortunately my host was waiting for me in the bar (where else?) and introduced me to a number of members standing close by.

I was a little nervous at first not really knowing what to expect but everyone was very friendly and welcoming. All were wearing a club tie and lapel pin in their jackets. Oh yes dress code. As it was mid morning and not evening I did not have to wonder if it was a black tie occasion (because I was unsure if my dinner suit would still fit me since my retirement) or, would a lounge suit or jacket and tie be sufficient? I was reassured that my smart jacket and tie seemed to suit the occasion admirably.

After a while we were called into the dining room which had several large tables. Oh where do I sit? Anywhere and everywhere was the answer. Wherever there's a spare seat; after all Probud does not encourage cliques but wants a clear mix of members from one month to another to allow everyone to know each other better.

After a short introduction there followed a talk by an outside speaker. On the first occasion the topic was about the Oregon Trail in the USA. Subsequent talks have been about cycling the length of the USA, life observations by someone who naturally enough always saw the funny side of life (and was indeed very funny) and the life and times of a BBC radio reporter. The talks are varied, informative, humorous and always well received.

Lunch followed. A traditional English meal was served followed by a dessert. I had chosen the biscuits and cheese as an alternative to the dessert. Conversation flowed and the noise increased with laughter and chatter all around me. I discovered that members were retired having followed a wide variety of careers including bomb disposal, bank note forgery, nuclear science, paper manufacture, motor heads and many other occupations. In turn upon retirement members had devoted their spare time to cruising, holidays, bird watching, playing golf, politics and so on. What an eclectic bunch.

After lunch, the President, resplendent in his chain of office, made various announcements of interest to the assembled members including what many considered the most important decision of the meeting – what to eat at the next lunch meeting!!

Other announcements followed including details of various trips being organised that would be of interest to members and their partners as well as less formal meetings at various pubs and restaurants being held throughout the year.

I made my way home in the early afternoon thinking what great value for money I had enjoyed. For a modest outlay of £25 annual subscription plus £13 a month for the cost of the meal I wondered about the people I had met, the conversations that followed and the interesting and fascinating lives of those around me.



For more information about the Probud Club of Basingstoke please visit our website at **[www.probusbasingstoke.club](http://www.probusbasingstoke.club)**

Picture: Jeff Grover describes his first PROBUS meeting



# P.R. BRICKELL

7 Bexmoor Way, Old Basing



**All aspects of  
carpentry work  
undertaken**



FOR FREE ESTIMATES & ADVICE ON  
KITCHEN FITTING, STAIR PARTS RE-  
PLACEMENT, NEW DOORS FITTED, RE-  
PAIRS TO ROTTEN TIMBER AND  
FRAMES, WARDROBE FITTING, AND  
GENERAL MAINTENANCE WORK,  
NO JOB TOO SMALL

PLEASE PHONE  
**PETER ON 01256 355534**

# S. M. DECORATORS

*Interior & Exterior  
Prompt & Efficient Service  
Competitive Prices  
Fully Insured Company  
Over 25 Years Experience  
Skim Plastering and  
Paperhanging Specialists  
City & Guilds Qualified  
All Work Guaranteed  
For Your  
Free Estimate Or Advice  
Please call Steve on  
**01256 811929***

# HORIZON SOUND & VISION

Family Run Business Est 1988

- **Aerial & Dish Installations**  
Freeview, Freesat, Sky & European
- **Freeview, Sky or Freesat on additional TVs**  
Magic Eye control & HD. Phone & Ethernet points.
- **TV Wall Installation**  
Free site survey. System planning. Hidden cabling
- **Tuning & set up of your equipment**  
Cable tidying  
Weak/low signal improvement
- **WiFi Signal Improvement & Network Cabling**

- **CCTV Installations**

- **Audio & Speaker Systems**  
Home, Outdoor & Workplace



Checkatrade.com  
Where reputation matters

**01256 841860**

Visit us at Essex Road Basingstoke  
[www.horizonsatellites.co.uk](http://www.horizonsatellites.co.uk) [info@horizonsatellites.co.uk](mailto:info@horizonsatellites.co.uk)



Over 35 years experience in all  
types of domestic, commercial and  
industrial fencing

**FREE** estimates and advice with  
**no obligation** and good quality  
workmanship are **GUARANTEED**

**CALL US 01256 358 940**  
[www.fencing-in-basingstoke.co.uk](http://www.fencing-in-basingstoke.co.uk)

**PC Doctor** (Hampshire) Ltd

**Andy Pearce 01256 841204**



Home & Small Business PC's/printers supplied.  
PC repairs & upgrades, Laptops & Desktops.  
Wireless networking. Virus & Malware removal.  
New PC & Tablet setup.  
Data & Email Transfer from old system.  
[pcdoc.hampshire@btinternet.com](mailto:pcdoc.hampshire@btinternet.com)

## BASINGSTOKE AND DEANE COMMUNITY HUB

The Basingstoke and Deane Community Hub has taken over 1,200 calls from vulnerable borough residents following the launch of a new coronavirus helpline.

Basingstoke and Deane Borough Council is working in partnership with Hampshire County Council, Basingstoke Voluntary Action (BVA) and community and voluntary groups to ensure that those most at risk can stay inside their homes and receive deliveries of food and prescribed medication during the COVID-19 outbreak.

The Coronavirus Hampshire Helpline has been set up for residents who are at higher risk from the virus, are self-isolating and do not have access to any help from family and friends to register for support. **The helpline is available seven days a week, from 9.00am to 5.00pm by calling 0333 370 4000.**

Basingstoke and Deane Community Hub, through a wide range of community and voluntary groups and volunteers across the borough, has been able to purchase and deliver food packages, collect medical prescriptions from local pharmacies and signpost residents in need to other support available.

For more information about the Basingstoke and Deane Community Hub and support available visit **[www.basingstoke.gov.uk/covid-19-community-hub](http://www.basingstoke.gov.uk/covid-19-community-hub)**

## THE BEDDINGTON CENTRE

### Beddington Centre Committee - **New Chairman required**

As the current chairman of the Beddington Centre is stepping down in June we need to find a volunteer to replace him.

The Beddington Centre Committee is comprised of representatives of the main user groups for the centre. It is responsible for providing governance so that the building remains in good shape, continues to be a valued asset for the local community and is managed in such a way that the user groups can operate successfully.

As well as dealing with issues that arise periodically the committee also meet quarterly, for what are usually hour long informal meetings. The meetings are led by the Chairman. We also have a secretary and a treasurer.

Ideally, we are looking for someone with experience of involvement or similar types of groups. The new chairman needs to have good communication skills, have a keen interest in the local community and be able to take an objective view on issues that arise.

If you are interested then we would like to hear from you.

Please contact me, **Alistair Smee [aandtsmee@gmail.com](mailto:aandtsmee@gmail.com)**

or **Anne Dawson [annie.dawson@hotmail.co.uk](mailto:annie.dawson@hotmail.co.uk)**

**Alistair Smee**



## 24hr Airport Transfers

Professional Door to Door Service

**"Reliable, friendly transport solutions from a local company you can trust"**

**07747 771906**

[www.basingstokeairports.co.uk](http://www.basingstokeairports.co.uk)

Departures



Fabio and Kat have moved to their new Dental Centre

**Call for a free of charge consultation**

- IMPLANTS •DENTURES
- CROWNS & BRIDGES
- HYGIENE •WHITENING

**New patients are welcome**

Implant Dental Centre  
Denture Studio  
and Dental Laboratory



The Loddon Business Centre,  
Unit Q, Roentgen Road, Basingstoke, RG24 8NG  
[www.italdent.co.uk](http://www.italdent.co.uk) tel. 01256 355 268

# Lee Quinlan



## Kitchen

## &

## Bathroom Fitter



**You buy it and I'll fit it!**

"One stop" service for accompanying:  
Plumbing, Tiling, Plastering,  
Flooring & Woodworking

## Electrical Work



**01256 811830**

email: [enquiry@leequinlan.co.uk](mailto:enquiry@leequinlan.co.uk)  
web: [www.leequinlan.co.uk](http://www.leequinlan.co.uk)



# WESTPORT GREY

BUILDING CONTRACTORS

01256 636511

Extensions | Loft Conversions | Renovations | New Builds



[WWW.WESTPORTGREY.CO.UK](http://WWW.WESTPORTGREY.CO.UK)

Westport Grey Ltd. - Registered in England - No. 0216444

BUILDING YOUR DREAMS

## ODIHAM AND OLD BASING HEALTH CENTRES

The Odiham and Old Basing Health Centres: Advises that all contact with the practise must be made by telephone. If you call for an appointment they will advise and depending on your requirements, offer, in the first instance, a telephone consultation and any follow up a may be required. Telephone **01256 702371** (Odiham) **01256 868370** (Old Basing) This is the information and advice from their website at [www.odihamhealthcentre.co.uk/](http://www.odihamhealthcentre.co.uk/)

### CORONAVIRUS

The practice is committed to the health of our population registered with us. With the increasing spread of Coronavirus the practice has taken the decision to change the range of GP appointments offered. All face to face appointment will now be telephone or video consultations in the first instance.

If you need to be seen the clinician will liaise with you directly to organise this.

We would stress this is in response to the evolving situation and based on guidance from Public Health England and with support from our local commissioners.

Please consider carefully if your problem is urgent and cannot wait, we are entering an unprecedented period of demand on the whole NHS.

With your support we hope to deliver the safest possible services during this turbulent period. We remain committed to the health and well being of our population and thank you for your support.

If you have a new continuous cough or fever (37.8 degrees centigrade or higher) regardless of travel history of contact with confirmed cases you should self-isolate for 7 days (this includes children) from the onset of symptoms following current advice.

If you have symptoms and you cannot manage at home you should use NHS 111 online for advice. **DO NOT go to the GP**

After 7 days of self-isolation, if you feel better and no longer have a temperature you can return to your normal routine. If you have not had signs of improvement after 7 days and have not already sought medical advice, you should use NHS 111 online before leaving your home or letting in visitors

For general advice such as how it spreads and how to avoid infection, or actions you need to take regarding self-isolation. [www.nhs.uk/conditions/coronavirus-covid-19/](http://www.nhs.uk/conditions/coronavirus-covid-19/)

## THEFT OF BIRDFEEDER

It is with considerable regret that the theft of a birdfeeder has been reported in Cavalier Road. Mick Croxon, the householder, managed to photograph one of the thieves last week when they were obviously casing the 'joint' and working out escape routes. Anyone finding the birdfeeder or witnessing similar activity is asked to get in touch with reality as soon as they possibly can!





Trusted since 1802  
HENDON • HATHAM • HAWLOW • BASINGSTOKE

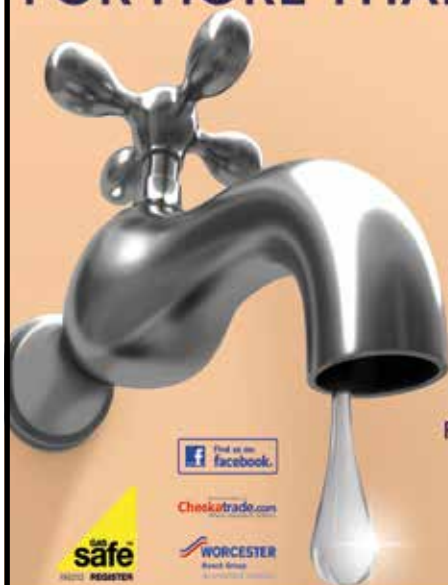


sales • lettings & management • commercial • development • rural

Residential Sales - **01256 840077** Lettings - **01256 337100**

[www.simmonsandsons.com](http://www.simmonsandsons.com) • 12 Wote Street, Basingstoke, Hants RG21 7NW

## FOR MORE THAN JUST A LEAKY TAP



**Niall Catlin**  
**PLUMBING & HEATING**

EST. 1991

Leaky taps to full bathroom installation  
Power flushing | Water softeners | Hot water cylinders

Boiler breakdowns, repair and servicing  
Boiler replacement | All allied trades  
All aspects of plumbing and heating



Checkatrade.com



WORCESTER  
Boiler Group

[www.niallcatlin.co.uk](http://www.niallcatlin.co.uk)

**01256 818086 | 07774 741021**

Serving Basingstoke for over 35 Years



#### Showroom

The old Station Andover Rd  
Oakley Basingstoke RG23 7HA

Tel: (01256) 782070

OPEN 9am - 5pm MONDAY - FRIDAY CLOSED WEDNESDAY

SATURDAY 10am - 4pm

VINYL, WOOD, CARPETS, LAMINATE,  
FURNITURE FOR THE DINING ROOM, LOUNGE, BEDROOM  
AND STUDY

Range of Accessories and  
Hand Made Jewellery.

[www.oakley-furnishing.co.uk](http://www.oakley-furnishing.co.uk)

**CARPET EDGING SERVICE  
ALSO AVAILABLE**

*Rugs Made Your size*

Many Items in stock for Fast Free Delivery



British made Beds Back on Show Free Delivery Approx 1 week

## LODDON

WINDOWS & DOORS

Local Family Run Business Established for over 35 years



GREAT RANGE INCLUDING:

Conservatories | Windows | Aluminium Bi-fold Doors | Composite Doors

- ✓ Quality UPVC Windows and Conservatories
- ✓ Attention to Detail - Local Recommendations
- ✓ Competitive Prices - Free Quotations
- ✓ 10 Year Guarantee - FENSA Registered

Tel: 0118 9815440 | 01256 464304 (evenings) | 07831 200613 (mobile) | [www.loddonwindows.co.uk](http://www.loddonwindows.co.uk)

## CHINEHAM CENTRE SHOPS

Circumstances might dictate that stores may change their open times at short notice. This information was made available by the Management at: [www.chinehamshopping.co.uk](http://www.chinehamshopping.co.uk)  
If you find any changes please let us know on [advertising@basinga.org.uk](mailto:advertising@basinga.org.uk)

**Tesco** - Open **Monday to Saturday 8.00am to 10.00pm** and **Sunday 10.00am to 4.00pm. 9.00am to 10.00am Monday, Wednesday and Friday** prioritised for **elderly and most vulnerable. 9.00am to 10.00am Sunday** prioritised for **NHS staff**.

Only **80** customers allowed in store at one time. Telephone: **03456779039**.

**Iceland** - Open **Monday to Saturday 9.00am to 6.00pm** and **Sunday 10.00am to 4.00pm**.

Every day in the week the **first hour** of trading is for over **70's and vulnerable persons** and **the last hour NHS staff**.

Only **20** customers allowed in store at one time. Telephone: **01256 321723**.

**Super Drug** - Open **Monday to Saturday, 9.00am to 5.00pm** and **Sun 10.00am to 4.00pm**. Only **10** customers allowed in store at one time. Telephone: **01256 465200**.

**M & S** - Open **Monday to Saturday 8.00am to 8.00pm** and **Sunday 10.00am to 4.00pm**.

**First hour Monday and Thursday** for over **70's and vulnerable persons**.

**First hour Tuesday and Friday** for **NHS staff**.

Only **40** customers allowed in store at one time. Telephone: **01256 326429**.

**Poundland** - Open **Monday to Saturday, 8.00am to 4.00pm** and **Sunday 10.00am to 4.00pm**.

Only **20** customers allowed in store at one time. Telephone: **01256 365192**.

**Boots** - Open **Monday to Friday 9.00am to 7.00pm Saturday 9.00am to 5.00pm** and **Sunday 10.00am to 4.00pm**. Each day the **Pharmacy** will be closed **1.00pm to 3.00pm**.

Only **10** customers allowed in store at one time. (5 Pharmacy & 5 in Store)

Telephone: **01256 417414**.

**Pets Corner** - Open **Monday to Saturday 9.00am to 5.00pm** and **Sunday 10.00am to 4.00pm**. Carry to car and home delivery available within a 10-mile radius.

Only **2** customers allowed in store at one time. Telephone: **01256 361963**

**Dominos** - Open **7 Days a week 10.00am to Midnight** for telephone orders for **delivery only**. Telephone: **01256 810030**.

## JUNE IN YOUR GARDEN

Although supermarkets, and DIY chains including B&Q and Homebase were allowed to continue selling plants and other gardening products during the lockdown, with news that from 13th May garden centres were allowed to open, the gardening world at least seems to be in full swing during the current crisis.

As the longest day approaches, there are plenty of jobs to do in your garden. Top of the list is weeds. They seem to reappear as soon as your back is turned, so regular hoeing is essential to make sure they don't take control. Perennial weeds or those with long tap roots such as dandelions, thistles, bindweed and nettles need to be dug out with a garden fork, otherwise they will just reappear. Be sure to dig out every single bit of bindweed lest it re-shoot.

Lawns can be mown once a week now and edged with a half moon edging iron to ensure that the borders are kept neat. If you have a compost heap, you can add the clippings to your pile, but be sure to do so only in thin layers to keep it properly aerated. It is a good idea to alternate green compost with 'brown' layers such as clean shredded paper or cardboard to keep the air circulating. If moss is a problem in your lawn, then you can use a combined moss-killer and fertiliser to treat it, but you may want to live with a little moss as it will keep the lawn looking green if drought hits.

Summer bedding plants and home-raised seedlings should now have been hardened off and are ready to plant into your borders and pots. Be sure to water them in well and continue to keep them hydrated in warm weather. Annuals are perfect for filling in gaps in borders and if you are quick, there is still enough time to sow late flowering plants such as Calendula and Godetia. For those who are thinking ahead, winter bedding plants such as pansies can be sown now, as can next year's wallflowers. Tidy up spring flowering perennials by cutting back foliage, which should encourage a new flush. Lift and divide hostas, primula and overcrowded bulbs. Stake tall flowers to prevent wind damage and keep tying in sweet peas and other climbing flowers.

Evergreen hedges such as Lonicera nitida, Box and Privet can be clipped this month and the slipping added to the compost heap if they aren't too woody. Once Clematis Montana has finished flowering, it can be cut back – hard if necessary. Honeysuckle and climbing roses will need tying in to their supports, the latter need to be tied as horizontal as possible to ensure the best showing of flowers. If you need to propagate any shrubs, now is the time to take softwood cuttings of plants such as lavender, rosemary, hydrangea and philadelphus.

If you are growing your own, you can keep sowing salad crops, French and Runner beans, squash, sweetcorn and outdoor cucumbers all directly into prepared ground outside. Keep an eye out for blight on potatoes and tomatoes. Plant out vegetables such as winter brassica and sweet peppers, quick crops like radish can be sown in gaps between crops. You should be thinning your apple, pear and plum trees this month to ensure the best crop. Summer prune red and white currants and gooseberries.

All types of pests can be problematic at this time of year whether in the vegetable or flower borders. Keep an eye out for slugs eating young seedlings, caterpillars, carrotfly and aphids. Small amounts can be dealt with by hand but consider investing in mail order ladybirds or nematodes to treat more severe infestations.



## NATURE NOTES FOR JUNE

As you will have all realised by now, the May edition of the Basinga was only available on-line due to the logistics of printing and delivery. Whilst most people could have accessed this there are still many who cannot, which is a shame as I know it is a comforting read.

So, in my May article (written early April) I waxed lyrically of the clean air and comparative silence around the parish and a month on its still the same. Its great for nature and the climate but not perhaps for people's mental well-being nor the economy; that aside, lets learn from this about how it can actually be when we all slow down.

I've received some beautiful photographs of local wildlife, in particular from Jim Andrews and Jamie Hall. Jamie is in fact a professional photographer but has allowed me to submit a portrait of a Starling (right), which is not perhaps the first bird one thinks about as being colourful but the variation in its iridescent plumage that shows up is stunning, or perhaps I should say Start-ling. Jamie also included a montage of Swallow photos, all taken in the Huish area as the birds arrived from their wintering grounds in Africa.

Jim took a number of images from the Millfield, an area that really comes to life this time of year with plants birds and mammals showing themselves to great effect. Purple Orchids, one of several rare flowers to now flourish in this valuable greenspace are showing well and very much worth the effort to seek out. In a month, Jim racked up an outstanding 101 bird species sightings there and also tipped me off that at least one Nightingale had passed through the field, recognisable because of it's legendary song. Sadly, I missed that but did get to hear the Cetti's Warbler that is still (at time of writing) in scrub by the Loddon near Tithe Barn. Additionally, a Reed Warbler may have set up home amongst the vegetation on the opposite bank as it was making one heck of a din during my same visit (7th May).

Christine Stuart reported Swifts overhead at Lychpit, Stephen Thair saw three at Park Lane and I can indeed confirm their presence as I heard that familiar summer scream overhead as they zoomed over The Street.

Stephen Thair spied a Lesser Whitethroat taking a quick dip in his garden pond, a species which can often also be seen and heard in the Millfield. A Common Whitethroat was vigorously singing its scratchy babbling tune, in competition with the purer notes of a Garden Warbler near Hods Farm as Mrs Bourne and I took our daily exercise last week



(6th May). A photo of the former bird, by kind permission of Jim Andrews, above.

I'm sure you've noticed too that warm weather brings out bugs of all shapes and sizes, many of which become part of the essential food chain. One that probably doesn't is the May Bug or Cockchafer a big brown ugly beast that has startled a number of people this week as they seemingly just fall out of the sky on to a patio. They are harmless, but they just don't look it!

My bird food regulars have occasionally asked me if I have any hedgehog food and I now have so let me know if you'd like some. My good lady has put a handful of these pellets and some dried mealworms out in a dish every evening and between 9.30 to 11.30pm up to three hogs have found the offerings just about every night. In order for us to see the activity through the patio window, we placed a solar spotlight just so and they really don't seem to mind being illuminated while they graze.

However, although the traffic hazard to Hedgehogs may have lessened somewhat, many die or get badly injured every year from lawn strimmers, garden netting, forks and spades thrust carelessly into garden waste piles, and steep sided ponds. Please make sure that your garden is as hog friendly as possible, they will reward you by clearing it of pests like slugs.

**Rick Bourne**

Don't forget to send all your nature related photos to **rickbourne@yahoo.com** or **naturenotes@basinga.org.uk** Or ring **01256 321108** for news. For all your bird food requirements, order it from me at 'Bird Drop-ins' use the former email address or ring me on **07900 648675** to place an order or get a form.

## VILLAGE CAFE

It feels like a very long time since we have been seeing you all in the cafe on a Friday afternoon and sadly, it seems that it will be quite a while until we can safely open our doors again.

It's at times of great suffering that the courage and skills of the NHS come to the fore. We are all extremely grateful to these amazing people who work tirelessly to help those in need and I am sure, once the cafe can reopen, we will most definitely be celebrating and thanking all our NHS workers.

For the volunteers at the cafe, it's really odd not to be able to greet all our lovely customers on a weekly basis but rest assured, we are thinking of you all and still practising our baking for our families. Truth be told, we may all need to exercise a little self restraint or we will be piling on the pounds quite quickly!

It maybe possible in future for us to offer a takeaway service, following strict social distancing rules and we will let you know if this is a viable thing. We appreciate that the whole idea of the cafe is that we can all meet up for a chat and a cuppa but in these unprecedented times, a takeaway box may cheer our customers and it is something we will look into when the time is right.

Until we can meet again, please stay safe and well, enjoy the slower pace of life we have now and better days will come.

## **YVONNE'S SPICY RHUBARB CHUTNEY**

4lb rhubarb trimmed weight

4 level tbsp coriander seeds crushed

1lb raisins          1lb sultanas

4 level tsp mild spicy curry powder

Cut rhubarb into 1" lengths.

Put in large pan with onions, crushed coriander seeds and wine or vinegar.

Cover and simmer for 20 minutes until the onions are softened

Add the rest of the ingredients and simmer without the lid for 1-1 ½ hours until thick.

Stir occasionally especially near the end to prevent from sticking.

Spoon into warm clean jars and cover with vinegar proof lids. Keep for 2-3 weeks or longer to mature before eating

## **YVONNE'S GOOSEBERRY JAM**

2.25kg gooseberries          850ml water          3kg sugar

Top and tail the gooseberries and wash and drain them thoroughly

Put in a large pan with the water and simmer very gently till the skins burst and the fruit has turned into a pulp.          Remove from heat.

Add the sugar stirring until dissolved and then bring slowly to the boil and then to setting point

Bottle into sterilised jars and cover with waxed discs and cellophane tops

Variation Add a dozen elderflower heads, tied in a muslin bag to the simmering fruit, but remove before adding the sugar.

**Both the above recipes can be cut down for those of us without allotments and / or large, productive gardens.**

## **RHUBARB AND ORANGE JAM**

2lbs rhubarb cut in small chunks

4floz water

2lbs jam sugar

Grated zest & juice of 1 orange

Place all the ingredients in a large pan & heat stirring until the sugar has dissolved. Bring to the boil & boil for about 30mins without stirring until setting point is reached. Pot in the usual way.

**Chris Hall**

## VILLAGE WORDSEARCH

H	I	C	T	E	E	R	T	S	E	H	T	E	R
S	M	R	A	N	O	T	L	O	B	T	T	A	L
O	S	N	R	A	B	E	H	T	I	T	S	N	L
M	O	O	L	D	B	A	S	I	N	G	E	T	P
R	O	Y	A	L	I	T	S	Y	R	A	M	T	S
R	E	C	R	E	A	T	I	O	N	H	N	E	I
M	I	N	E	P	G	N	I	K	L	I	M	S	T
N	W	O	R	C	E	H	T	T	H	T	A	R	H
A	L	L	O	T	M	E	N	T	S	E	I	S	L
A	I	T	H	E	H	A	T	C	H	L	I	T	E
C	L	Y	C	H	P	I	T	S	B	T	O	R	G
O	T	A	I	T	A	C	N	Y	I	N	P	Y	I
O	M	O	T	S	H	N	S	R	C	N	C	S	O
P	M	S	C	B	S	T	B	T	R	K	N	I	N

MILKINGPEN  
TRILBYS  
BOLTONARMS  
THECROWN  
THETREET  
STMARYS  
BRITISH  
COOP  
OLDBASING  
ALLOTMENTS  
TITHEBARN  
LEGION  
THEHATCH  
RECREATION  
ROYAL  
LYCHPIT

Play this puzzle online at : <https://thewordsearch.com/puzzle/1151217/>

## ROTARY CLUB CORONA QUIZ

**Below are clues to Places around the world, the spelling is not always the same, it may just sound similar. e.g. to wander = Rome**

- 1 Urinating monarch
- 2 Goes to bed with Dougal
- 3 Good French
- 4 Ms Loren
- 5 Pa's suitcase
- 6 French friend belongs to me
- 7 Boleyn on the floss
- 8 EEE
- 9 Knitted by a cow
- 10 Elizabeth c'est good
- 11 Where does superman buy his clothes

- 12 Royal bird on the briny
- 13 Bouncing in wonderland
- 14 Please purchase
- 15 Long delay for a line of people?
- 16 I will question the woman
- 17 Meadow Full Of Cooks
- 18 Italian Ford
- 19 Water barrier made of domesticated rodents
- 20 Python film

Answers will be on our website and Social Media after June 1st 2020. Search for Rotary Club of Basingstoke.



- Loft ladders & loft hatches
- Boarding, Lighting & Insulation

## CREATING SPACE THE EASY WAY!

### MAJOR BENEFITS

- De-clutter your home
- Create up to a third more space
- Gain safe & easy loft access
- No mess, no fuss, no subcontractors

Call now to book a FREE survey & quotation

**01256 688648**



[WWW.ACCESS4LOFTS.CO.UK](http://WWW.ACCESS4LOFTS.CO.UK)



## TRILBYS

BARBERSHOP & HAIRDRESSERS  
EST 1991

**Now open in Belle Vue Rd  
Old Basing.**  
**Hairdressing for the whole  
family.**  
**01256 357333**



## BLUE WILLOW COACHING

Career and Life Coaching

- Do you feel stuck in your professional life and need support to work out - what's the right way to go?
- Do you want to learn how to challenge your "inner critic" and build your emotional resilience?
- Do you want to increase your confidence and presence?
- Do you want to get in touch with who you are and what you truly want to do?

Siobhain Whitty is a professionally trained executive and life Coach, certified with the International Coach Federation and Academy of Executive Coaching.

Book a **FREE 30 minute, no obligation sample session**

Contact Siobhain at:

[info@bluewillowcoaching.co.uk](mailto:info@bluewillowcoaching.co.uk)

[www.bluewillowcoaching.co.uk](http://www.bluewillowcoaching.co.uk)

07894 209 698

*Conversations with  
a purpose*

## M.C.PEGG

**Plumbing, Heating & Gas Services**

**Local & Reliable**

**All Plumbing and Heating Installations**  
**Gas Safe Registered - 195010**

**Bathroom Suites/Showers**  
**Gas Safety Certificates**  
**Boilers, Hot Water Tanks,**  
**Heating systems,**  
**Servicing**

**FREE ESTIMATES**



**Tel: 01256 308462**

**Mob: 07973 217020**

**Email: [matthew.pegg1@btinternet.com](mailto:matthew.pegg1@btinternet.com)**

## Spencer & Peyton Ltd

*Established 1961*

3rd Generation  
family owned  
and run Funeral  
Directors and  
Monumental  
Masons

**24 Hours**

**Our family  
serving your family  
for over 55 years**

**380 Worting Road  
Basingstoke, RG22 5DZ  
01256 323165**

*(Flower Girl Florist on site)*

**7 London Road  
Hook, RG27 9DY  
01256 761717**

**Trading Standards approved**

**Pre-paid funeral plans  
discussed without obligation**

**[spencerandpeyton@btconnect.com](mailto:spencerandpeyton@btconnect.com)**

**[www.spencerandpeyton.co.uk](http://www.spencerandpeyton.co.uk)**



**10**  
YEAR  
GUARANTEE



**NJP Heating Services**

**0% finance**

on all Worcester Bosch boilers

complete with up to 10 year guarantees on all  
Worcester Bosch boilers and controls

Contact us today for your free quote

**07717 741999 or  
01256 782202**

nick@njpheating.com | njpheating.com



## Basing Pedicare

Fully qualified mobile Foot Health Practitioner

- Toe Nail Cutting
- Corn And Callus Management
- Diabetic Foot Management
- Verruca Care



Contact

Malinda Snook MCHP MAHP  
to make your appointment-  
I visit you in your home!

**07751 474322**



**Prime Improvements**  
Home & Garden

**07841 532 878**

Painting & Decorating  
Handyman Jobs  
Tiling  
Flooring

Grass & Hedge cutting  
Garden Clearance  
Fencing & Decking  
Sheds & Cabins

[www.primeimprovements.co.uk](http://www.primeimprovements.co.uk)

## The Complete Tree Service

- Residential & commercial work
- Tree removal, thinning & lifting
- Stump removal, scrub clearance & hedge trimming

Over 25 years experience -  
fully trained, insured & certified.  
We guarantee we can help.  
Call for professional, friendly advice.



Teams all over Hampshire, Surrey,  
Sussex and the South:

**01256 763 162**

[www.cedardale.co.uk](http://www.cedardale.co.uk)

**Checkatrade.com**  
Where reputation matters





High quality and friendly MSK,  
Back Pain and Neck Pain service  
with professionals who listen

**Annette and Gordon Linscott**

35 Years in Basingstoke  
Now on your doorstep

East Barn, Lychpit Centre  
01256 466 666

[www.spineteam.co.uk](http://www.spineteam.co.uk)



**THERMOFLUX**  
PLUMBING AND HEATING SERVICES

Fully insured | Over 16 years experience |  
Free no obligation quotations

Boiler and heating system installation specialist

General plumbing

Bathroom installations

Water softener installations

Power flushing

Un-vented hot water systems



T: 07891 226591 | E: [ThermoFluxplumbing@outlook.com](mailto:ThermoFluxplumbing@outlook.com)



SERVING THE PEOPLE OF BASINGSTOKE & NORTH HAMPSHIRE SINCE 1968

**FINANCE  
NOW  
AVAILABLE**

Please ask  
for details

DESIGN,  
SALES & FULL  
INSTALLATION  
SERVICE

01256 363123 | [twoguys.co.uk](http://twoguys.co.uk)

ARMSTRONG ROAD, DANESHILL EAST, BASINGSTOKE, HAMPSHIRE RG24 8NU

## ● BASINGA

**EDITOR:** Colin Follett, 101 The Street, Old Basing, RG24 7DA 01256 326909

**ADVERTISING:** Email: [advertising@basinga.org.uk](mailto:advertising@basinga.org.uk)

**SECRETARY:** Graham Merry, 40 Linden Avenue, Old Basing, RG24 7HS 01256 463908

**TREASURER:** Andy Groves, 30 Pyotts Copse, Old Basing, RG24 8WE 07918 644187

### **DISTRIBUTION:**

**Old Basing Area:** Peter Watson, 19 Priory Gardens, Old Basing, RG24 7DS 01256 352299

**Lychpit Area:** Andree McLean, 6 Pimpernel Way, Lychpit, RG24 8SS 01256 819006

**WEBMASTER:** Brian Baker; email: [webtech@basinga.org.uk](mailto:webtech@basinga.org.uk) 07955 743579

## ● OLD BASING & LYCHPIT PARISH COUNCIL

**CLERK:** Sandra Tuck 01256 462847

**OFFICE AND HOURS:** The Pavilion, The Recreation Ground

Monday to Thursday 10.00am to noon

## ● CHURCH INFORMATION FOR THE AREA

### **Church of England (Parish of Old Basing & Lychpit)**

**VICAR:** Revd. Heather Leppard, The Vicarage, Church Lane, Old Basing 01256 363612

Email: [vicar@stmarysoldbasing.org.uk](mailto:vicar@stmarysoldbasing.org.uk) 07745 731729

**ADMINISTRATOR:** Debbie Filer 07541 698235

**CHURCHWARDENS:** Tricia Renwick 01256 326155

Ian Kershaw 01256 355500

### **Regular Services at St Mary's Church, Old Basing**

**SUNDAY:** 8am Holy Communion; 9.30am Sung Eucharist and Junior Church;  
5.30pm Evening Service

**OTHER DAYS:** Wednesday 10am Holy Communion

*Changes to the regular service pattern and other weekday services are shown  
in the weekly news-sheet, a copy of which is displayed on the noticeboard in  
the church porch*

### **Old Basing Methodist Church**

**MINISTER:** Revd. David Jenkins 01183271592

07973195566

**SUNDAY SERVICE:** 10.30am Morning Service

### **Roman Catholic**

**PRIEST:** Fr Christopher Rutledge 01256 465214

St Bede's Church, Popley Way, Basingstoke

**SUNDAY MASSES:** 9am, 11am and 6.30pm



need a **painter** and **decorator**?

- professional
  - friendly
  - affordable
- 
- experienced
  - reliable
  - fully insured

call us today for a free no obligation quote  
**01256 334852 07919 358050**  
pscdecoratingservices@gmail.com

## Infinite Harmony Hatha Yoga

4 classes to choose from:

### Gentle Chair Yoga

If you have mobility/injury concerns then this is the class for you. All yoga is done on a chair and using props.

Monday's

14.00 - 15.00

Lychpit  
Community Hall

### Relax Yoga

This class is for all levels of ability and uses postures to help you relax and deepen your yoga practice.

Tuesday's

19.15 - 20.15

St Mary's  
Church Hall,  
Old Basing

### Sunday Morning Yoga

This class is for all levels of ability and focuses on strength and flexibility.

Sunday's

09.15 - 10.15

Lychpit  
Community Hall

### Sunday Night Satsang

This is deep relaxation yoga. You will be led through a series of gentle yoga postures followed by an extended guided meditation.

1st Sunday

of the month  
18.30 - 19.30

Lychpit  
Community Hall



Contact Vicky on 01256 910108 or  
email vicky@infiniteharmony.co.uk  
Don't forget to book your space.



For more information visit [www.infiniteharmony.co.uk](http://www.infiniteharmony.co.uk)



## Tree Surgeon

01256 763859

07766 256788

TreeSceneArb@gmail.com



TREE SCENE  
ARBORICULTURE

Adrian Stanley

BSc(Hon) AA Tech Cert

Qualified & experienced  
arborist

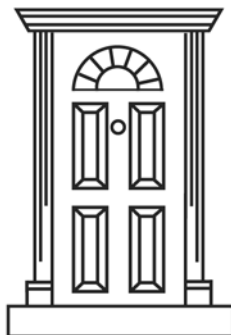
- All aspects of tree work & stump grinding
- Fully insured (£5m) - free estimates
- Logs supplied

## Basing Electrical Ltd

For all your electrical needs.  
Both in and outside your home.

Part P Approved NIC EIC Registered.

Call John on 07793748360



## DAVID MATTHEWS

Carpentry & Joinery Services

Chineham, Basingstoke. Tel: 01256 476207

- ❖ Doors ❖ Wardrobes ❖ Kitchen Design Service
- ❖ Custom Made Units

# LIVE **FREE** ONLINE CLASSES



Fitness classes with local instructors,  
live-streamed to you, 7 days a week.  
**PLUS** a daily kids' bedtime story **AND**  
loads of virtual family fun. **ALL FREE**

Voluntary donations. Funds go to  
Basingstoke NHS and local care workers

[beechdown.co.uk](http://beechdown.co.uk)